

Product datasheet

Anti-ERG antibody [EPR3864(2)] ab133264

リコンビナント RabMAb

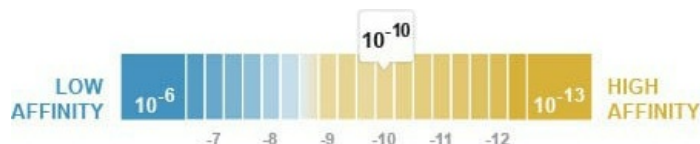
★★★★☆ **7 Abreviews** **29 References** 画像数 **11**

製品の概要

製品名	Anti-ERG antibody [EPR3864(2)]
製品の詳細	Rabbit monoclonal [EPR3864(2)] to ERG
由来種	Rabbit
特異性	This antibody does not cross-react with Fli1.
アプリケーション	適用あり: Flow Cyt (Intra), ICC/IF, WB, IP, IHC-P
種交差性	交差種: Mouse, Human, Recombinant fragment
免疫原	Synthetic peptide within Human ERG aa 450 to the C-terminus (C terminal). The exact sequence is proprietary. Database link: P11308
ポジティブ・コントロール	Jurkat whole cell lysate (ab7899), 293T cell lysate, MCF7 cell lysate, ERG recombinant protein, Human prostate adenocarcinoma tissue.
特記事項	This product is a recombinant monoclonal antibody, which offers several advantages including: <ul style="list-style-type: none"> - High batch-to-batch consistency and reproducibility - Improved sensitivity and specificity - Long-term security of supply - Animal-free production For more information see here . Our RabMAb [®] technology is a patented hybridoma-based technology for making rabbit monoclonal antibodies. For details on our patents, please refer to RabMAb[®] patents .

製品の特性

製品の状態	Liquid
保存方法	Shipped at 4°C. Store at -20°C. Stable for 12 months at -20°C.
解離定数 (K _D 値)	K _D = 3.98 x 10 ⁻¹⁰ M



[Learn more about K_D](#)

バッファー	pH: 7.2 Preservative: 0.01% Sodium azide Constituents: 50% Glycerol (glycerin, glycerine), 0.05% BSA
精製度	Protein A purified
ポリモノ	モノクローナル
クローン名	EPR3864(2)
アイソタイプ	IgG

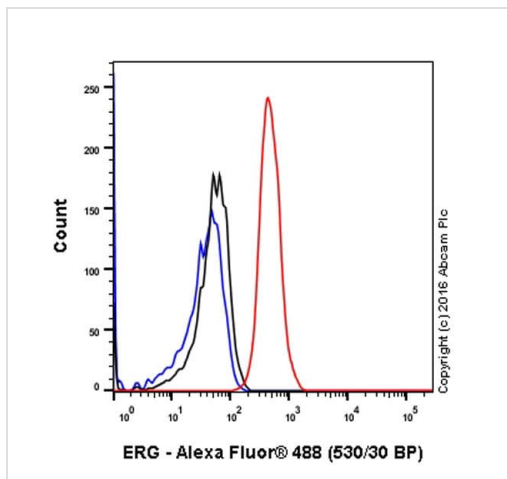
アプリケーション

The Abpromise guarantee **Abpromise保証は、次のテスト済みアプリケーションにおけるab133264の使用に適用されます**
アプリケーションノートには、推奨の開始希釈率がありますが、適切な希釈率につきましてはご検討ください。

アプリケーション	Abreviews	特記事項
Flow Cyt (Intra)		1/120.
ICC/IF		1/500.
WB		1/2000. Detects a band of approximately 55 kDa (predicted molecular weight: 54 kDa).
IP		1/30.
IHC-P	★★★★★ (3)	1/250. Perform heat mediated antigen retrieval before commencing with IHC staining protocol. See <u>IHC antigen retrieval protocols</u> .

ターゲット情報

機能	Transcriptional regulator. May participate in transcriptional regulation through the recruitment of SETDB1 histone methyltransferase and subsequent modification of local chromatin structure.
関連疾患	Defects in ERG are a cause of Ewing sarcoma (ES) [MIM:612219]. A highly malignant, metastatic, primitive small round cell tumor of bone and soft tissue that affects children and adolescents. It belongs to the Ewing sarcoma family of tumors, a group of morphologically heterogeneous neoplasms that share the same cytogenetic features. They are considered neural tumors derived from cells of the neural crest. Ewing sarcoma represents the less differentiated form of the tumors. Note=A chromosomal aberration involving ERG is found in patients with Erwing sarcoma. Translocation t(21;22)(q22;q12) with EWSR1. Note=Chromosomal aberrations involving ERG have been found in acute myeloid leukemia (AML). Translocation t(16;21)(p11;q22) with FUS. Translocation t(X;21)(q25-26;q22) with ELF4.
配列類似性	Belongs to the ETS family. Contains 1 ETS DNA-binding domain. Contains 1 PNT (pointed) domain.
細胞内局在	Nucleus. Cytoplasm. Localized in cytoplasmic mRNP granules containing untranslated mRNAs.

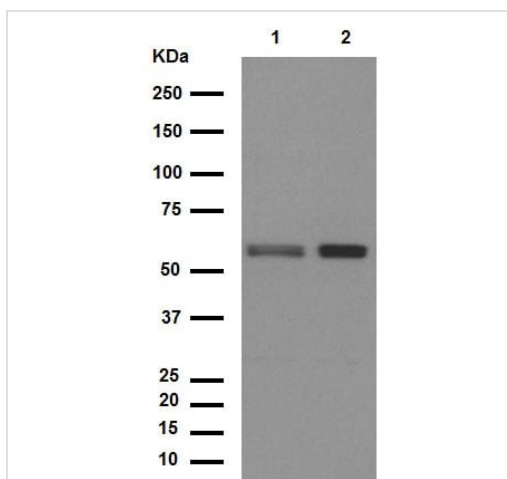


Flow Cytometry (Intracellular) - Anti-ERG antibody [EPR3864(2)] (ab133264)

ab133264 staining ERG in the human cell line MCF-7 (human breast carcinoma) by intracellular flow cytometry. Cells were fixed with 4% paraformaldehyde, permeabilized with 90% methanol and the sample was incubated with the primary antibody at a dilution of 1/210. A goat anti rabbit IgG (Alexa Fluor® 488) at a dilution of 1/2000 was used as the secondary antibody.

Isotype control: Rabbit monoclonal IgG (Black)

Unlabelled control: Cell without incubation with primary antibody and secondary antibody (Blue)



Western blot - Anti-ERG antibody [EPR3864(2)] (ab133264)

All lanes : Anti-ERG antibody [EPR3864(2)] (ab133264) at 1/2000 dilution (purified)

Lane 1 : Jurkat cell lysate

Lane 2 : HEK293 cell lysate

Lysates/proteins at 20 µg per lane.

Secondary

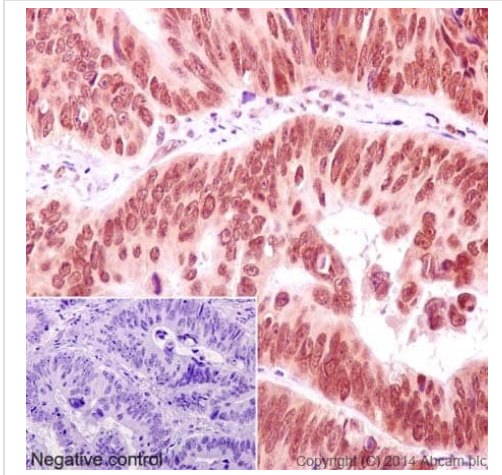
All lanes : HRP goat anti-rabbit (H+L) at 1/1000 dilution

Predicted band size: 54 kDa

Observed band size: 55 kDa

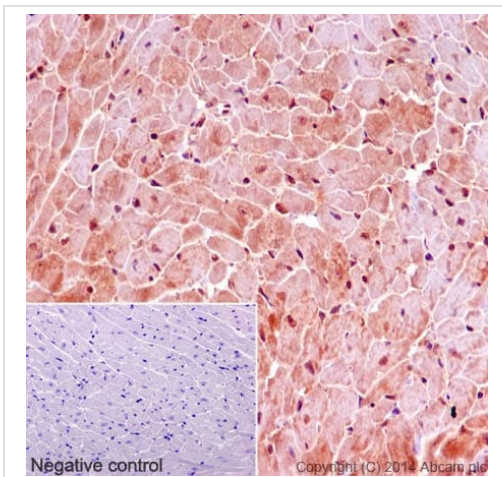
Blocking buffer: 5% NFDm/TBST

Dilution buffer: 5% NFDm/TBST



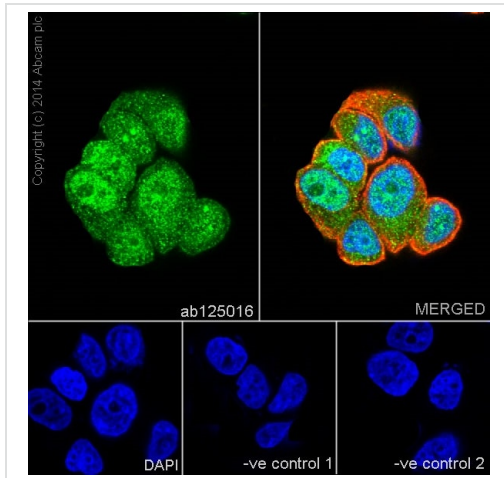
Immunohistochemistry (Formalin/PFA-fixed paraffin-embedded sections) - Anti-ERG antibody
[EPR3864(2)] (ab133264)

Immunohistochemical staining of paraffin embedded human colonic carcinoma with purified ab133264 at a working dilution of 1 in 250. The secondary antibody used is a HRP goat anti-rabbit H+L (**ab97051**). The sample is counter-stained with hematoxylin. Antigen retrieval was performed using Tris-EDTA buffer, pH 9.0. PBS was used instead of the primary antibody as the negative control, and is shown in the inset.



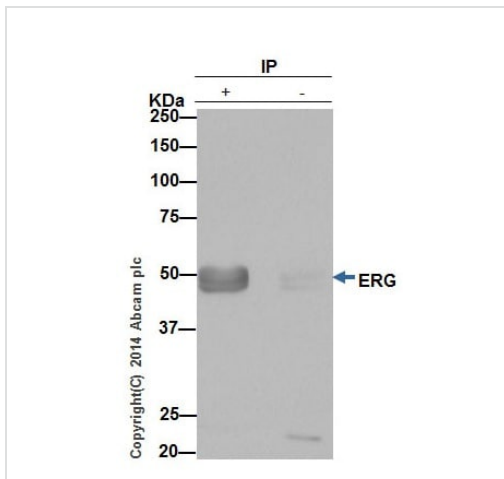
Immunohistochemistry (Formalin/PFA-fixed paraffin-embedded sections) - Anti-ERG antibody
[EPR3864(2)] (ab133264)

Immunohistochemical staining of paraffin embedded mouse cardiac muscle with purified ab133264 at a working dilution of 1 in 250. The secondary antibody used is a HRP goat anti-rabbit H+L (**ab97051**). The sample is counter-stained with hematoxylin. Antigen retrieval was performed using Tris-EDTA buffer, pH 9.0. PBS was used instead of the primary antibody as the negative control, and is shown in the inset.



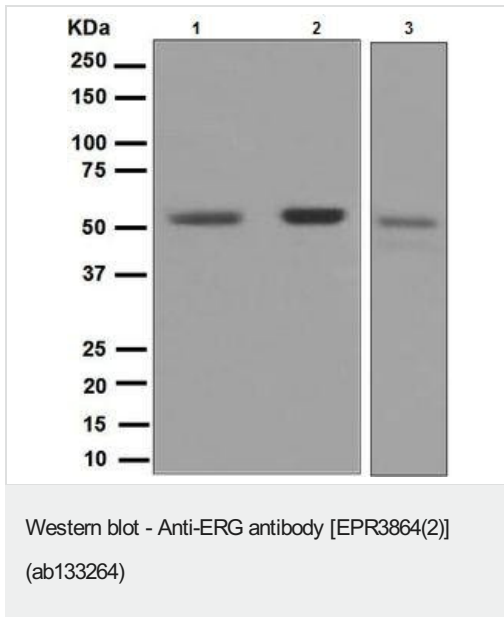
Immunocytochemistry/ Immunofluorescence - Anti-ERG antibody [EPR3864(2)] (ab133264)

Immunofluorescence staining of MCF7 cells with purified ab133264 at a working dilution of 1 in 500, counter-stained with DAPI. The secondary antibody was Alexa Fluor[®] 488 goat anti rabbit (**ab150077**), used at a dilution of 1 in 500. **ab7291** was used to stain tubulin, and this is shown in the top right hand panel. The cells were fixed in 4% PFA and permeabilized using 0.1% Triton X 100. The negative control is shown in bottom middle and right hand panels - for the negative controls, purified ab133264 was used at a dilution of 1/200 followed by an Alexa Fluor[®] 594 goat anti-mouse antibody at a dilution of 1/500.



Immunoprecipitation - Anti-ERG antibody [EPR3864(2)] (ab133264)

ab133264 (purified) at 1/30 immunoprecipitating ERG in HEK293 cells (Lane 1). Lane 2 - PBS. For western blotting, a HRP-conjugated anti-rabbit IgG, specific to the non-reduced form of IgG was used as the secondary antibody (1/1500). Blocking buffer and concentration: 5% NFDm/TBST. Diluting buffer and concentration: 5% NFDm /TBST.



All lanes : Anti-ERG antibody [EPR3864(2)] (ab133264) at 1/1000 dilution (unpurified)

Lane 1 : Jurkat cell lysate

Lane 2 : 293T cell lysate

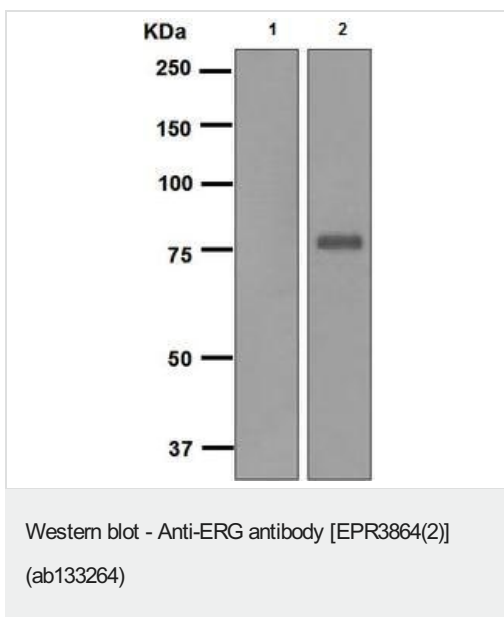
Lane 3 : MCF7 cell lysate

Lysates/proteins at 10 µg per lane.

Secondary

All lanes : Goat anti-rabbit HRP conjugated antibody at 1/2000 dilution

Predicted band size: 54 kDa



All lanes : Anti-ERG antibody [EPR3864(2)] (ab133264) at 1/1000 dilution (unpurified)

Lane 1 : Fli1 recombinant protein

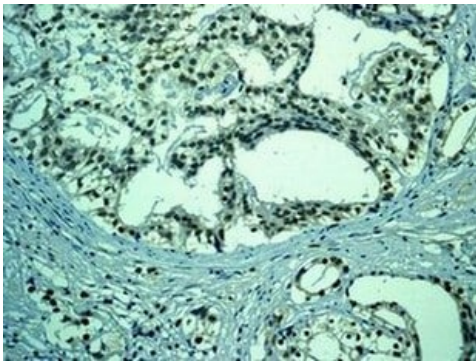
Lane 2 : ERG recombinant protein

Lysates/proteins at 0.01 µg per lane.

Secondary

All lanes : Goat anti-rabbit HRP conjugated antibody at 1/2000 dilution

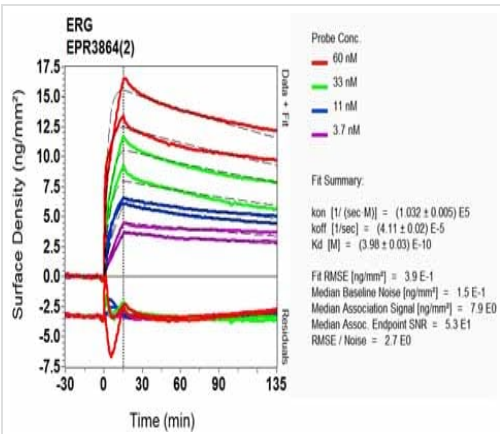
Predicted band size: 54 kDa



Immunohistochemistry (Formalin/PFA-fixed paraffin-embedded sections) - Anti-ERG antibody [EPR3864(2)] (ab133264)

Immunohistochemical analysis of paraffin embedded human prostate adenocarcinoma tissue labelling ERG with ab133264 at a dilution of 1/100.

Perform heat mediated antigen retrieval before commencing with IHC staining protocol.



SPR Scanning - Anti-ERG antibody [EPR3864(2)] (ab133264)

Equilibrium dissociation constant (K_D)

Learn more about K_D

[Click here to learn more about \$K_D\$](#)

Why choose a recombinant antibody?

- 

Research with confidence
Consistent and reproducible results
- 

Long-term and scalable supply
Recombinant technology
- 

Success from the first experiment
Confirmed specificity
- 

Ethical standards compliant
Animal-free production

Anti-ERG antibody [EPR3864(2)] (ab133264)

Please note: All products are "FOR RESEARCH USE ONLY. NOT FOR USE IN DIAGNOSTIC PROCEDURES"

Our Abpromise to you: Quality guaranteed and expert technical support

- Replacement or refund for products not performing as stated on the datasheet
- Valid for 12 months from date of delivery
- Response to your inquiry within 24 hours

- We provide support in Chinese, English, French, German, Japanese and Spanish
- Extensive multi-media technical resources to help you
- We investigate all quality concerns to ensure our products perform to the highest standards

If the product does not perform as described on this datasheet, we will offer a refund or replacement. For full details of the Abpromise, please visit <https://www.abcam.co.jp/abpromise> or contact our technical team.

Terms and conditions

- Guarantee only valid for products bought direct from Abcam or one of our authorized distributors