

Anti-ErbB3 / HER3 antibody [E186] ab32121

KO 評価済 リコンビナント RabMAb

★★★★★ [2 Abreviews](#) [18 References](#) [画像数 5](#)

製品の概要

製品名	Anti-ErbB3 / HER3 antibody [E186]
製品の詳細	Rabbit monoclonal [E186] to ErbB3 / HER3
由来種	Rabbit
特異性	ab32121 recognises ErbB3/HER3. WB samples: should avoid boiling
アプリケーション	適用あり: WB 適用なし: ICC/IF, IHC or IP
種交差性	交差種: Rat, Human
免疫原	Synthetic peptide within Human ErbB3/ HER3 aa 1300 to the C-terminus (C terminal). The exact sequence is proprietary. Database link: P21860
ポジティブ・コントロール	MCF-7 cell lysate.
特記事項	This product is a recombinant monoclonal antibody, which offers several advantages including: <ul style="list-style-type: none"> - High batch-to-batch consistency and reproducibility - Improved sensitivity and specificity - Long-term security of supply - Animal-free production For more information see here . Our RabMAb® technology is a patented hybridoma-based technology for making rabbit monoclonal antibodies. For details on our patents, please refer to RabMAb® patents .

製品の特性

製品の状態	Liquid
保存方法	Shipped at 4°C. Store at +4°C short term (1-2 weeks). Upon delivery aliquot. Store at -20°C. Avoid freeze / thaw cycle.
バッファー	pH: 7.2 Preservative: 0.01% Sodium azide Constituents: 40% Glycerol, 0.05% BSA, 59% PBS
精製度	Protein A purified
ポリ/モノ	モノクローナル

クローン名	E186
アイソタイプ	IgG

アプリケーション

The Abpromise guarantee Abpromise保証は、次のテスト済みアプリケーションにおけるab32121の使用に適用されます
アプリケーションノートには、推奨の開始希釈率がありますが、適切な希釈率につきましてはご検討ください。

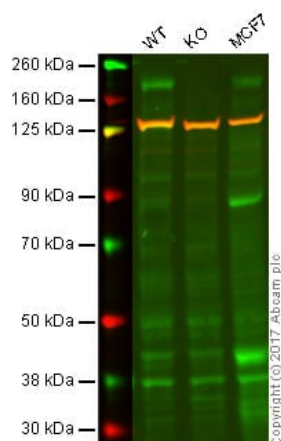
アプリケーション	Abreviews	特記事項
WB	★★★★★ (2)	1/500 - 1/1000. Detects a band of approximately 185 kDa (predicted molecular weight: 149 kDa).

追加情報 Is unsuitable for ICC/IF, IHC or IP.

ターゲット情報

機能	Binds and is activated by neuregulins and NTAK.
組織特異性	Epithelial tissues and brain.
関連疾患	Defects in ERBB3 are the cause of lethal congenital contracture syndrome type 2 (LCCS2) [MIM:607598]; also called Israeli Bedouin multiple contracture syndrome type A. LCCS2 is an autosomal recessive neurogenic form of a neonatally lethal arthrogryposis that is associated with atrophy of the anterior horn of the spinal cord. The LCCS2 syndrome is characterized by multiple joint contractures, anterior horn atrophy in the spinal cord, and a unique feature of a markedly distended urinary bladder. The phenotype suggests a spinal cord neuropathic etiology.
配列類似性	Belongs to the protein kinase superfamily. Tyr protein kinase family. EGF receptor subfamily. Contains 1 protein kinase domain.
発生段階	Overexpressed in a subset of human mammary tumors.
ドメイン	The cytoplasmic part of the receptor may interact with the SH2 or SH3 domains of many signal-transducing proteins.
翻訳後修飾	Ligand-binding increases phosphorylation on tyrosine residues and promotes its association with the p85 subunit of phosphatidylinositol 3-kinase.
細胞内局在	Secreted and Cell membrane.

画像



Western blot - Anti-ErbB3 / HER3 antibody [E186]
(ab32121)

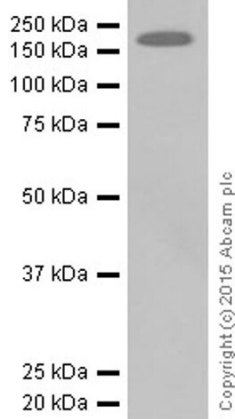
Lane 1: Wild-type HAP1 whole cell lysate (20 µg)

Lane 2: ERBB3 knockout HAP1 whole cell lysate (20 µg)

Lane 3: MCF7 whole cell lysate (20 µg)

Lanes 1 - 3: Merged signal (red and green). Green - ab32121 observed at 185 kDa. Red - loading control, [ab9484](#), observed at 37 kDa.

ab32121 was shown to specifically recognize ERBB3 in wild-type HAP1 cells along with additional cross-reactive bands. No band was observed when knock out samples were examined. Wild-type and ERBB3 knockout samples were subjected to SDS-PAGE. Ab32121 and [ab18058](#) (Mouse anti Vinculin loading control) were incubated overnight at 4°C at 1/500 dilution and 1/20,000 dilution respectively. Blots were developed with Goat anti-Rabbit IgG H&L (IRDye® 800CW) preabsorbed ([ab216773](#)) and Goat anti-Mouse IgG H&L (IRDye® 680RD) preabsorbed ([ab216776](#)) secondary antibodies at 1/20,000 dilution for 1 hour at room temperature before imaging.



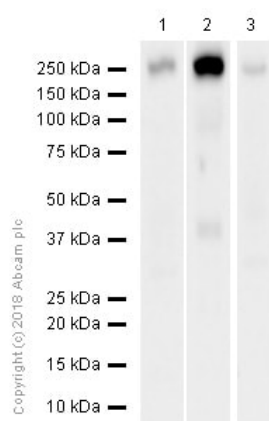
Western blot - Anti-ErbB3 / HER3 antibody [E186]
(ab32121)

Anti-ErbB3 / HER3 antibody [E186] (ab32121) at 1/1000 dilution + MDA-MB-435S (human ductal carcinoma) whole cell lysate at 10 µg

Secondary

Goat Anti-Rabbit IgG H&L (HRP) ([ab97051](#)) at 1/20000 dilution

Predicted band size: 149 kDa



Western blot - Anti-ErbB3 / HER3 antibody [E186]
(ab32121)

All lanes : Anti-ErbB3 / HER3 antibody [E186] (ab32121) at 2.685 $\mu\text{g/ml}$ (purified)

Lane 1 : MDA-MB-435S (human mammary gland ductal carcinoma melanocyte) whole cell lysate

Lane 2 : C6 (Rat glial tumor glial cell) whole cell lysate

Lane 3 : Rat brain lysate

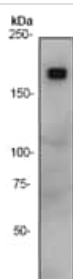
Lysates/proteins at 20 μg per lane.

Secondary

All lanes : Goat Anti-Rabbit IgG H&L (HRP) ([ab97051](#)) at 1/20000 dilution

Predicted band size: 149 kDa

Exposure time: 37 seconds



Western blot - Anti-ErbB3 / HER3 antibody [E186]
(ab32121)

Anti-ErbB3 / HER3 antibody [E186] (ab32121) at 1/500 dilution
(unpurified) + MCF-7 cell lysate

Predicted band size: 149 kDa

Observed band size: 185 kDa

Why choose a recombinant antibody?



Research with confidence
Consistent and reproducible results



Long-term and scalable supply
Recombinant technology



Success from the first experiment
Confirmed specificity



Ethical standards compliant
Animal-free production

Anti-ErbB3 / HER3 antibody [E186] (ab32121)

Please note: All products are "FOR RESEARCH USE ONLY. NOT FOR USE IN DIAGNOSTIC PROCEDURES"

Our Abpromise to you: Quality guaranteed and expert technical support

- Replacement or refund for products not performing as stated on the datasheet
- Valid for 12 months from date of delivery
- Response to your inquiry within 24 hours
- We provide support in Chinese, English, French, German, Japanese and Spanish
- Extensive multi-media technical resources to help you
- We investigate all quality concerns to ensure our products perform to the highest standards

If the product does not perform as described on this datasheet, we will offer a refund or replacement. For full details of the Abpromise, please visit <https://www.abcam.co.jp/abpromise> or contact our technical team.

Terms and conditions

- Guarantee only valid for products bought direct from Abcam or one of our authorized distributors