

Anti-ErbB2 / HER2 antibody [SP3] ab16662

リコンビナント **RabMAb**

★★★★★ **2 Abreviews** **8 References** 画像数 4

製品の概要

製品名	Anti-ErbB2 / HER2 antibody [SP3]
製品の詳細	Rabbit monoclonal [SP3] to ErbB2 / HER2
由来種	Rabbit
アプリケーション	適用あり: IHC-P 適用なし: Flow Cyt, ICC, IHC-Fr, IP or WB
種交差性	交差種: Human 非交差種: Mouse
免疫原	Recombinant fragment. This information is considered to be commercially sensitive.
エピトープ	Extracellular domain
ポジティブ・コントロール	IHC-P: Human breast carcinoma tissue.
特記事項	<p>This product was switched from a hybridoma to recombinant production method on 5th March 2019.</p> <p>This product is a recombinant monoclonal antibody, which offers several advantages including:</p> <ul style="list-style-type: none"> - High batch-to-batch consistency and reproducibility - Improved sensitivity and specificity - Long-term security of supply - Animal-free production <p>For more information see here.</p> <p>Our RabMAb[®] technology is a patented hybridoma-based technology for making rabbit monoclonal antibodies. For details on our patents, please refer to RabMAb[®] patents.</p> <p>This product is FOR RESEARCH USE ONLY. For commercial use, please contact partnerships@abcam.com.</p>

製品の特性

製品の状態	Liquid
保存方法	Shipped at 4°C. Upon delivery aliquot and store at -20°C. Avoid repeated freeze / thaw cycles.
バッファー	pH: 7.20 Preservative: 0.1% Sodium azide

	Constituents: 1% BSA, PBS
精製度	Protein A purified
ポリ/モノ	モノクローナル
クローン名	SP3
アイソタイプ	IgG

アプリケーション

The Abpromise guarantee **Abpromise保証は、次のテスト済みアプリケーションにおけるab16662の使用に適用されます**
 アプリケーションノートには、推奨の開始希釈率がありますが、適切な希釈率につきましてはご確認ください。

アプリケーション	Abreviews	特記事項
IHC-P	★★★★★ (1)	1/100. Perform heat mediated antigen retrieval with citrate buffer pH 6 before commencing with IHC staining protocol. ab16662 is not suitable for [IHC-P, Mouse]

追加情報 Is unsuitable for Flow Cyt, ICC, IHC-Fr, IP or WB.

ターゲット情報

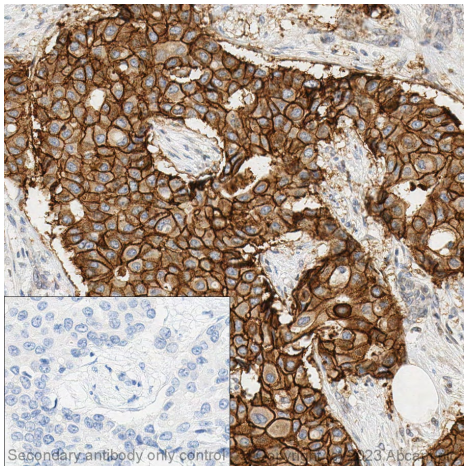
機能	Protein tyrosine kinase that is part of several cell surface receptor complexes, but that apparently needs a coreceptor for ligand binding. Essential component of a neuregulin-receptor complex, although neuregulins do not interact with it alone. GP30 is a potential ligand for this receptor. Regulates outgrowth and stabilization of peripheral microtubules (MTs). Upon ERBB2 activation, the MEMO1-RHOA-DIAPH1 signaling pathway elicits the phosphorylation and thus the inhibition of GSK3B at cell membrane. This prevents the phosphorylation of APC and CLASP2, allowing its association with the cell membrane. In turn, membrane-bound APC allows the localization of MACF1 to the cell membrane, which is required for microtubule capture and stabilization. In the nucleus is involved in transcriptional regulation. Associates with the 5'-TCAAATTC-3' sequence in the PTGS2/COX-2 promoter and activates its transcription. Implicated in transcriptional activation of CDKN1A; the function involves STAT3 and SRC. Involved in the transcription of rRNA genes by RNA Pol I and enhances protein synthesis and cell growth.
組織特異性	Expressed in a variety of tumor tissues including primary breast tumors and tumors from small bowel, esophagus, kidney and mouth.
関連疾患	Hereditary diffuse gastric cancer Glioma Ovarian cancer Lung cancer Gastric cancer Chromosomal aberrations involving ERBB2 may be a cause gastric cancer. Deletions within 17q12 region producing fusion transcripts with CDK12, leading to CDK12-ERBB2 fusion leading to truncated CDK12 protein not in-frame with ERBB2.
配列類似性	Belongs to the protein kinase superfamily. Tyr protein kinase family. EGF receptor subfamily. Contains 1 protein kinase domain.
翻訳後修飾	Autophosphorylated. Autophosphorylation occurs in trans, i.e. one subunit of the dimeric receptor phosphorylates tyrosine residues on the other subunit (Probable). Ligand-binding increases

phosphorylation on tyrosine residues (PubMed:27134172). Signaling via SEMA4C promotes phosphorylation at Tyr-1248 (PubMed:17554007). Dephosphorylated by PTPN12 (PubMed:27134172).

細胞内局在

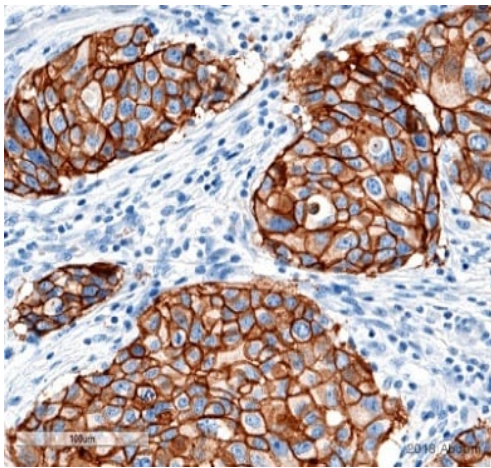
Cytoplasm. Nucleus and Cell membrane. Cytoplasm, perinuclear region. Nucleus. Translocation to the nucleus requires endocytosis, probably endosomal sorting and is mediated by importin beta-1/KPNB1.

画像



Immunohistochemical analysis of formalin fixed paraffin embedded human breast cancer labelling ErbB2 with ab16662 at a concentration of 0.16 µg/ml. The immunostaining was performed on a Ventana DISCOVERY ULTRA (Roche Tissue Diagnostics) instrument with an OptiView DAB IHC Detection Kit. Heat mediated antigen retrieval was conducted for 32 mins at 100°C with ULTRA cell conditioning solution (CC1, pH 8.5). ab16662 anti-ErbB2 / HER2 antibody [SP3] was incubated at 37°C for 16 mins. Sections were counterstained with Hematoxylin II. Image inset shows absence of staining in secondary antibody only control.

Immunohistochemistry (Formalin/PFA-fixed paraffin-embedded sections) - Anti-ErbB2 / HER2 antibody [SP3] (ab16662)

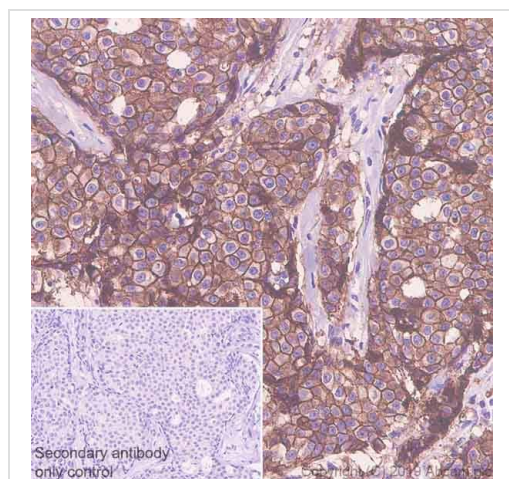


Formalin-fixed, paraffin-embedded human breast invasive ductal carcinoma tissue stained for ErbB2 / HER2 using ab16662 at 1/200 dilution in immunohistochemical analysis, followed by Goat anti Rabbit IgG HRP. Heat mediated antigen retrieval was done using a pH 8.5 buffer.

This image was generated from the hybridoma version.

Immunohistochemistry (Formalin/PFA-fixed paraffin-embedded sections) - Anti-ErbB2 / HER2 antibody [SP3] (ab16662)

This image is courtesy of an Abreview submitted by Mr. Allan Wang.







Immunohistochemistry (Formalin/PFA-fixed paraffin-embedded sections) - Anti-ErbB2 / HER2 antibody [SP3] (ab16662)

Immunohistochemical analysis of paraffin-embedded Human breast carcinoma tissue labeling ErbB 2 with ab16662, followed by a ready to use Goat Anti-Rabbit & Mouse IgG (HRP). Positive staining on Human breast carcinoma, performed on a Leica Biosystems BOND® RX instrument. The section was incubated with ab16662 for 10 mins at room temperature. Counterstained with Hematoxylin. Heat mediated antigen retrieval using Bond™ Epitope Retrieval Solution 1 (pH 6.0) for 10 minutes. Secondary antibody only control: Used PBS instead of primary antibody, secondary antibody is a ready to use Goat Anti-Rabbit & Mouse IgG (HRP).

This image was generated from the hybridoma version.

Why choose a recombinant antibody?

 <p>Research with confidence Consistent and reproducible results</p>	 <p>Long-term and scalable supply Recombinant technology</p>
 <p>Success from the first experiment Confirmed specificity</p>	 <p>Ethical standards compliant Animal-free production</p>

Anti-ErbB2 / HER2 antibody [SP3] (ab16662)

Please note: All products are "FOR RESEARCH USE ONLY. NOT FOR USE IN DIAGNOSTIC PROCEDURES"

Our Promise to you: Quality guaranteed and expert technical support

- Replacement or refund for products not performing as stated on the datasheet
- Valid for 12 months from date of delivery
- Response to your inquiry within 24 hours
- We provide support in Chinese, English, French, German, Japanese and Spanish
- Extensive multi-media technical resources to help you
- We investigate all quality concerns to ensure our products perform to the highest standards

If the product does not perform as described on this datasheet, we will offer a refund or replacement. For full details of the Abpromise, please visit <https://www.abcam.co.jp/abpromise> or contact our technical team.

Terms and conditions

- Guarantee only valid for products bought direct from Abcam or one of our authorized distributors