

# Anti-EPS8 antibody [EPR6112] ab124882

リコンビナント RabMAb

## 2 References [画像数 3](#)

### 製品の概要

製品名	Anti-EPS8 antibody [EPR6112]
製品の詳細	Rabbit monoclonal [EPR6112] to EPS8
由来種	Rabbit
アプリケーション	<b>適用あり:</b> WB, IHC-P <b>適用なし:</b> Flow Cyt or IP
種交差性	<b>交差種:</b> Human
免疫原	Synthetic peptide within Human EPS8 aa 1-100 (N terminal). The exact sequence is proprietary.
ポジティブ・コントロール	HeLa, A375, 293T, and K562 cell lysates, Human kidney tissue
特記事項	<p>This product is a recombinant monoclonal antibody, which offers several advantages including:</p> <ul style="list-style-type: none"><li>- High batch-to-batch consistency and reproducibility</li><li>- Improved sensitivity and specificity</li><li>- Long-term security of supply</li><li>- Animal-free production</li></ul> <p>For more information <a href="#">see here</a>.</p> <p>Our RabMAb<sup>®</sup> technology is a patented hybridoma-based technology for making rabbit monoclonal antibodies. For details on our patents, please refer to <a href="#">RabMAb<sup>®</sup> patents</a>.</p> <p>Mouse, Rat: We have preliminary internal testing data to indicate this antibody may not react with these species. Please contact us for more information.</p>

### 製品の特性

製品の状態	Liquid
保存方法	Shipped at 4°C. Store at -20°C. Stable for 12 months at -20°C.
バッファー	pH: 7.20 Preservative: 0.05% Sodium azide Constituents: 40% Glycerol (glycerin, glycerine), 9.85% Tris glycine, 50% Tissue culture supernatant
精製度	Protein A purified
ポリ/モノ	モノクローナル

クローン名                   EPR6112  
アイソタイプ                 IgG

#### アプリケーション

**The Abpromise guarantee**       **Abpromise保証は、** 次のテスト済みアプリケーションにおけるab124882の使用に適用されます  
アプリケーションノートには、推奨の開始希釈率がありますが、適切な希釈率につきましてはご検討ください。

アプリケーション	Abreviews	特記事項
WB		1/1000 - 1/10000. Detects a band of approximately 97 kDa (predicted molecular weight: 92 kDa).
IHC-P		1/100 - 1/250. Perform heat mediated antigen retrieval with citrate buffer pH 6 before commencing with IHC staining protocol. antigen retrieval is recommended.

追加情報                       Is unsuitable for Flow Cyt or IP.

#### ターゲット情報

**機能**                           Upon binding to EGF receptor enhances EGF-dependent mitogenic signals. Can bind multiple cellular targets.

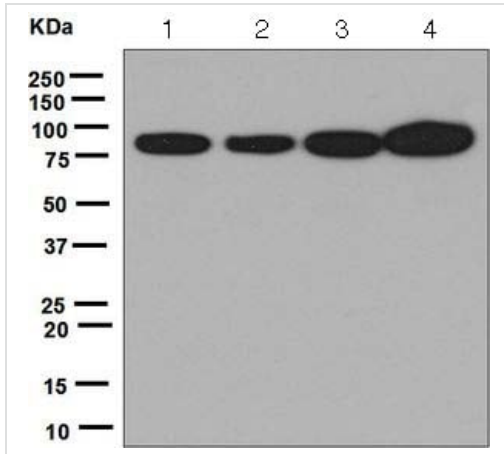
**組織特異性**                 Expressed in all tissues analyzed, including heart, brain, placenta, lung, liver, skeletal muscle, kidney and pancreas. Expressed in all epithelial and fibroblastic lines examined and in some, but not all, hematopoietic cells.

**配列類似性**                 Belongs to the EPS8 family.  
Contains 1 PH domain.  
Contains 1 SH3 domain.

**ドメイン**                     The SH3 domain mediates interaction with SHB.

**翻訳後修飾**                 Phosphorylated by several receptor tyrosine kinases.

#### 画像



Western blot - Anti-EPS8 antibody [EPR6112] (ab124882)

**All lanes :** Anti-EPS8 antibody [EPR6112] (ab124882) at 1/1000 dilution

**Lane 1 :** HeLa cell lysate

**Lane 2 :** A375 cell lysate

**Lane 3 :** 293T cell lysate

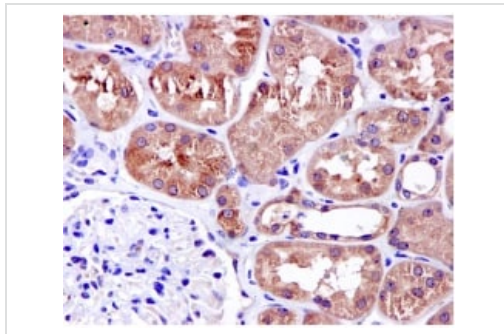
**Lane 4 :** K562 cell lysate

Lysates/proteins at 10 µg per lane.

**Secondary**

**All lanes :** HRP labelled goat anti-rabbit at 1/2000 dilution

**Predicted band size:** 92 kDa



Immunohistochemistry (Formalin/PFA-fixed paraffin-embedded sections) - Anti-EPS8 antibody [EPR6112] (ab124882)

Staining of EPS8 in Paraffin-embedded Human kidney tissue by Immunohistochemistry using ab124882 at a dilution of 1/100.

Perform heat mediated antigen retrieval with citrate buffer pH 6 before commencing with IHC staining protocol.

Why choose a recombinant antibody?

 <b>Research with confidence</b> Consistent and reproducible results	 <b>Long-term and scalable supply</b> Recombinant technology
 <b>Success from the first experiment</b> Confirmed specificity	 <b>Ethical standards compliant</b> Animal-free production

Anti-EPS8 antibody [EPR6112] (ab124882)

**Please note:** All products are "FOR RESEARCH USE ONLY. NOT FOR USE IN DIAGNOSTIC PROCEDURES"

## **Our Abpromise to you: Quality guaranteed and expert technical support**

---

- Replacement or refund for products not performing as stated on the datasheet
- Valid for 12 months from date of delivery
- Response to your inquiry within 24 hours
  
- We provide support in Chinese, English, French, German, Japanese and Spanish
- Extensive multi-media technical resources to help you
- We investigate all quality concerns to ensure our products perform to the highest standards

If the product does not perform as described on this datasheet, we will offer a refund or replacement. For full details of the Abpromise, please visit <https://www.abcam.co.jp/abpromise> or contact our technical team.

## **Terms and conditions**

---

- Guarantee only valid for products bought direct from Abcam or one of our authorized distributors