

# Anti-EPPIN antibody ab185699

画像数 3

### 製品の概要

---

製品名	Anti-EPPIN antibody
製品の詳細	Rabbit polyclonal to EPPIN
由来種	Rabbit
アプリケーション	<b>適用あり:</b> WB, IHC-P, ICC/IF
種交差性	<b>交差種:</b> Mouse, Human
免疫原	Recombinant full length protein corresponding to Human EPPIN aa 22-133. Mature form. Database link: <a href="#">O95925</a>
ポジティブ・コントロール	THP1, Mouse liver and Mouse testis lysates
特記事項	<p>The Life Science industry has been in the grips of a reproducibility crisis for a number of years. Abcam is leading the way in addressing this with our range of recombinant monoclonal antibodies and knockout edited cell lines for gold-standard validation. Please check that this product meets your needs before purchasing.</p> <p>If you have any questions, special requirements or concerns, please send us an inquiry and/or contact our Support team ahead of purchase. Recommended alternatives for this product can be found below, along with publications, customer reviews and Q&amp;As</p>

### 製品の特性

---

製品の状態	Liquid
保存方法	Shipped at 4°C. Store at +4°C short term (1-2 weeks). Upon delivery aliquot. Store at -20°C long term. Avoid freeze / thaw cycle.
バッファー	pH: 7.30 Preservative: 0.02% Sodium azide Constituents: 50% Glycerol, 49% PBS
精製度	Immunogen affinity purified
ポリ/モノ	ポリクローナル
アイソタイプ	IgG

### アプリケーション

---

## The Abpromise guarantee

**Abpromise保証は、次のテスト済みアプリケーションにおけるab185699の使用に適用されます**

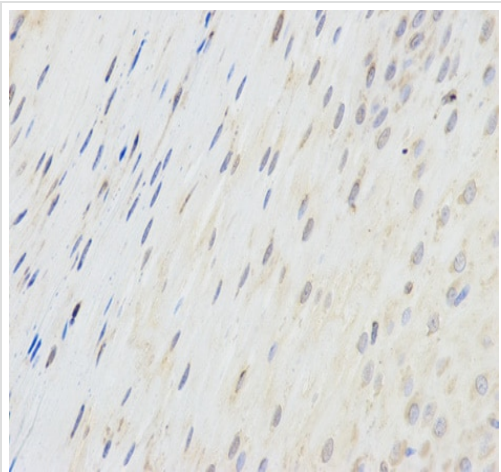
アプリケーションノートには、推奨の開始希釈率がありますが、適切な希釈率につきましてはご検討ください。

アプリケーション	Abreviews	特記事項
WB		1/500 - 1/2000. Predicted molecular weight: 15 kDa.
IHC-P		1/50 - 1/200.
ICC/IF		Use at an assay dependent concentration.

## ターゲット情報

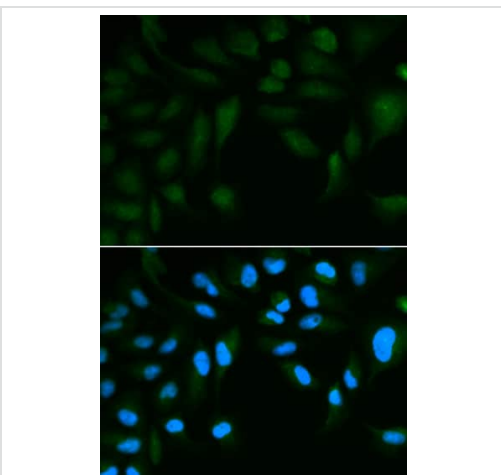
<b>機能</b>	Serine protease inhibitor that plays an essential role in male reproduction and fertility. Modulates the hydrolysis of SEMG1 by KLK3/PSA (a serine protease), provides antimicrobial protection for spermatozoa in the ejaculate coagulum, and binds SEMG1 thereby inhibiting sperm motility.
<b>組織特異性</b>	In testis, expressed and secreted by Sertoli cells, appearing on the surface of testicular and ejaculate spermatozoa. Expressed in the spermatogonia and the earliest preleptotene spermatocytes. In the epididymis, is expressed and secreted by epithelial cells and covers the surface of epididymal spermatozoa and ciliated epithelial cells (at protein level). Expressed specifically in epididymis and testis. Isoform 2 is expressed only in the epididymis. Weak expression is detected in myoid cells as well as spermatogenic cells.
<b>配列類似性</b>	Contains 1 BPTI/Kunitz inhibitor domain. Contains 1 WAP domain.
<b>ドメイン</b>	The BPTI/Kunitz inhibitor domain is required for elastase inhibitory activity. BPTI/Kunitz inhibitor and WAP domains are involved in the protein antibacterial activity.
<b>細胞内局在</b>	Secreted. Cell surface. Bound to the surface of testicular and on the head and tail of ejaculate spermatozoa.

## 画像



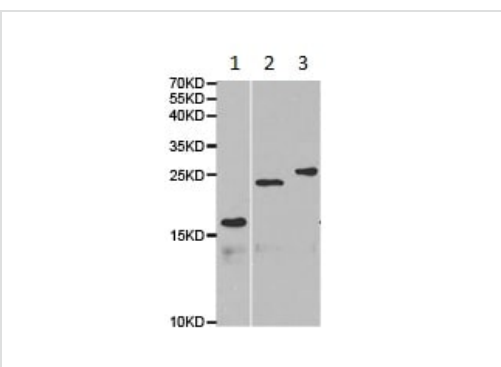
Immunohistochemistry (Formalin/PFA-fixed paraffin-embedded sections) - Anti-EPPIN antibody (ab185699)

Immunohistochemistry (Formalin/PFA-fixed paraffin-embedded sections) analysis of human esophagus tissue labelling EPPIN with ab185699 at 1/200. Magnification: 400x.



Immunocytochemistry/ Immunofluorescence - Anti-EPPIN antibody (ab185699)

Immunocytochemistry/Immunofluorescence analysis of HepG2 cells using ab185699. Blue DAPI for nuclear staining.



Western blot - Anti-EPPIN antibody (ab185699)

**All lanes :** Anti-EPPIN antibody (ab185699) at 1/500 dilution

**Lane 1 :** THP1 cell lysate

**Lane 2 :** Mouse liver lysate

**Lane 3 :** Mouse testis lysate

**Predicted band size:** 15 kDa

**Please note:** All products are "FOR RESEARCH USE ONLY. NOT FOR USE IN DIAGNOSTIC PROCEDURES"

## **Our Abpromise to you: Quality guaranteed and expert technical support**

---

- Replacement or refund for products not performing as stated on the datasheet
- Valid for 12 months from date of delivery
- Response to your inquiry within 24 hours
  
- We provide support in Chinese, English, French, German, Japanese and Spanish
- Extensive multi-media technical resources to help you
- We investigate all quality concerns to ensure our products perform to the highest standards

If the product does not perform as described on this datasheet, we will offer a refund or replacement. For full details of the Abpromise, please visit <https://www.abcam.co.jp/abpromise> or contact our technical team.

## **Terms and conditions**

---

- Guarantee only valid for products bought direct from Abcam or one of our authorized distributors