

Anti-Ephrin B2 antibody ab131536

★★★★★ [8 Abreviews](#) [18 References](#) [画像数 5](#)

製品の概要

製品名	Anti-Ephrin B2 antibody
製品の詳細	Rabbit polyclonal to Ephrin B2
由来種	Rabbit
アプリケーション	適用あり: WB 適用なし: IHC-P
種交差性	交差種: Mouse, Rat, Human
免疫原	Synthetic peptide corresponding to Human Ephrin B2 aa 328-332 conjugated to keyhole limpet haemocyanin. Sequence: N-I-Y-Y-K Database link: P52799 Run BLAST with Run BLAST with
ポジティブ・コントロール	HEK293, 293T, PC3, A549, Hela, 293, MCF, and Mouse and Rat Spleen and Brain tissue lysate; 293 cells treated with 20ng/ml TNF-α for 30min.
特記事項	<p>The Life Science industry has been in the grips of a reproducibility crisis for a number of years. Abcam is leading the way in addressing this with our range of recombinant monoclonal antibodies and knockout edited cell lines for gold-standard validation. Please check that this product meets your needs before purchasing.</p> <p>If you have any questions, special requirements or concerns, please send us an inquiry and/or contact our Support team ahead of purchase. Recommended alternatives for this product can be found below, along with publications, customer reviews and Q&As</p>

製品の特性

製品の状態	Liquid
保存方法	Shipped at 4°C. Store at -20°C. Stable for 12 months at -20°C.
バッファー	pH: 7.40 Preservative: 0.02% Sodium azide Constituents: 50% Glycerol, 49% PBS, 0.88% Sodium chloride PBS without Mg ²⁺ and Ca ²⁺

精製度	Immunogen affinity purified
ポリ/モノ	ポリクローナル
アイソタイプ	IgG

アプリケーション

The Abpromise guarantee Abpromise保証は、次のテスト済みアプリケーションにおけるab131536の使用に適用されます
 アプリケーションノートには、推奨の開始希釈率がありますが、適切な希釈率につきましてはご検討ください。

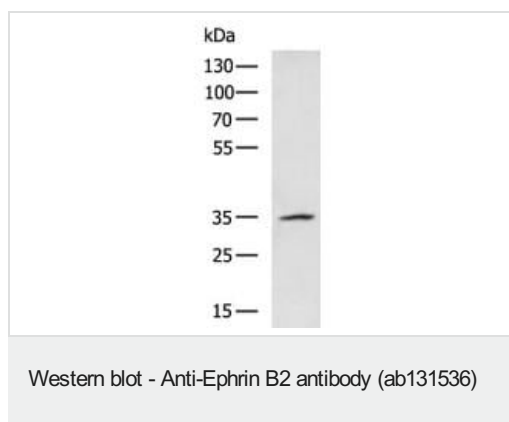
アプリケーション	Abreviews	特記事項
WB		1/200 - 1/2000. Detects a band of approximately 55 kDa (predicted molecular weight: 37 kDa). Predicted molecular weight: 37 kDa. Observed molecular weight: 55 kDa. The observed band size of Ephrin-B2 may not the same as predicted MWs in WB (PMID: 31985015,32286515).

追加情報 Is unsuitable for IHC-P.

ターゲット情報

機能	Cell surface transmembrane ligand for Eph receptors, a family of receptor tyrosine kinases which are crucial for migration, repulsion and adhesion during neuronal, vascular and epithelial development. Binds promiscuously Eph receptors residing on adjacent cells, leading to contact-dependent bidirectional signaling into neighboring cells. The signaling pathway downstream of the receptor is referred to as forward signaling while the signaling pathway downstream of the ephrin ligand is referred to as reverse signaling. Binds to receptor tyrosine kinase including EPHA4, EPHA3 and EPHB4. Together with EPHB4 plays a central role in heart morphogenesis and angiogenesis through regulation of cell adhesion and cell migration. EPHB4-mediated forward signaling controls cellular repulsion and segregation from EFNB2-expressing cells. May play a role in constraining the orientation of longitudinally projecting axons. (Microbial infection) Acts as a receptor for Hendra virus and Nipah virus.
組織特異性	Lung and kidney.
配列類似性	Belongs to the ephrin family. Contains 1 ephrin RBD (ephrin receptor-binding) domain.
翻訳後修飾	Inducible phosphorylation of tyrosine residues in the cytoplasmic domain.
細胞内局在	Membrane.

画像



Anti-Ephrin B2 antibody (ab131536) at 1/800 dilution + A549 cell lysate at 40 µg

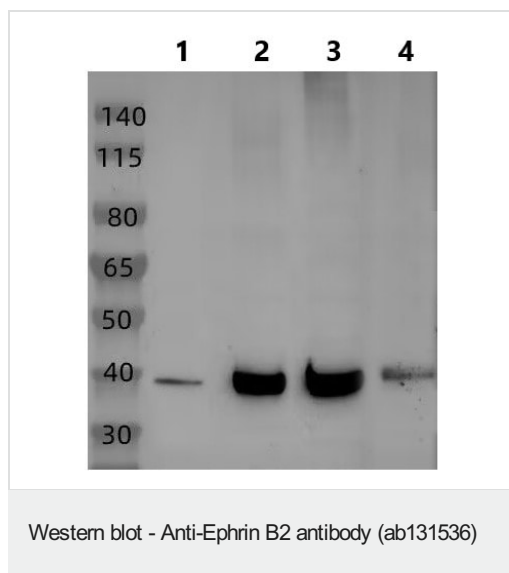
Secondary

HRP-conjugated Goat anti rabbit IgG at 1/5000 dilution

Predicted band size: 37 kDa

Observed band size: 55 kDa

Exposure time: 10 seconds



All lanes : Anti-Ephrin B2 antibody (ab131536) at 1/2000 dilution

Lane 1 : Mouse Spleen tissue lysate

Lane 2 : Rat Spleen tissue lysate

Lane 3 : HEK293 tissue lysate

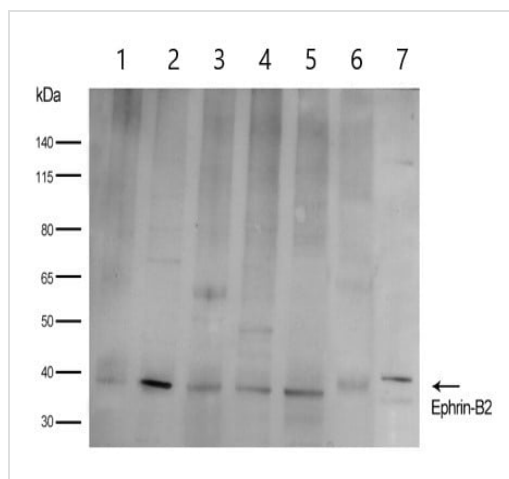
Lane 4 : 293T tissue lysate

Lysates/proteins at 40 µg per lane.

Secondary

All lanes : Goat Anti-Rabbit IgG(HRP) at 1/5000 dilution

Predicted band size: 37 kDa



Western blot - Anti-Ephrin B2 antibody (ab131536)

All lanes : Anti-Ephrin B2 antibody (ab131536) at 1/800 dilution

Lane 1 : PC3 tissue lysate

Lane 2 : A549 tissue lysate

Lane 3 : Hela tissue lysate

Lane 4 : 293 tissue lysate

Lane 5 : MCF tissue lysate

Lane 6 : Mouse Spleen tissue lysate

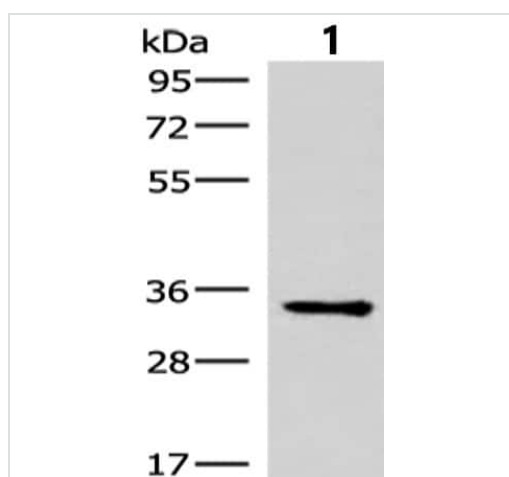
Lane 7 : Rat Brain tissue lysate

Lysates/proteins at 40 µg per lane.

Secondary

All lanes : Goat Anti-Rabbit IgG(HRP) at 1/5000 dilution

Predicted band size: 37 kDa



Western blot - Anti-Ephrin B2 antibody (ab131536)

Anti-Ephrin B2 antibody (ab131536) at 1/200 dilution + Mouse brain tissue lysate at 40 µg

Secondary

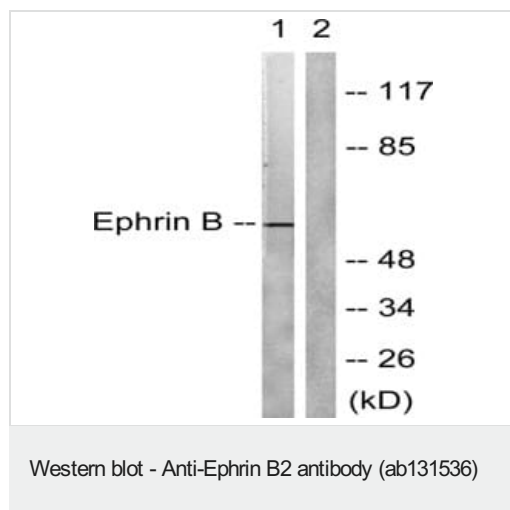
Goat anti rabbit IgG at 1/8000 dilution

Predicted band size: 37 kDa

Observed band size: 35 kDa

Exposure time: 30 seconds

Gel: 8%SDS-PAGE



All lanes : Anti-Ephrin B2 antibody (ab131536) at 1/1000 dilution

Lane 1 : 293 cells treated with 20ng/ml TNF- α for 30min

Lane 2 : 293 cells blocked with the phospho protein

Lysates/proteins at 60 μ g per lane.

Secondary

All lanes : Goat Anti-Rabbit IgG(HRP) at 1/20000 dilution

Predicted band size: 37 kDa

Observed band size: 57 kDa

Please note: All products are "FOR RESEARCH USE ONLY. NOT FOR USE IN DIAGNOSTIC PROCEDURES"

Our Abpromise to you: Quality guaranteed and expert technical support

- Replacement or refund for products not performing as stated on the datasheet
- Valid for 12 months from date of delivery
- Response to your inquiry within 24 hours
- We provide support in Chinese, English, French, German, Japanese and Spanish
- Extensive multi-media technical resources to help you
- We investigate all quality concerns to ensure our products perform to the highest standards

If the product does not perform as described on this datasheet, we will offer a refund or replacement. For full details of the Abpromise, please visit <https://www.abcam.co.jp/abpromise> or contact our technical team.

Terms and conditions

- Guarantee only valid for products bought direct from Abcam or one of our authorized distributors