


# Anti-Eph receptor B4/HTK antibody ab93902

★★★★★ **1 Abreviews** [画像数 1](#)

### 製品の概要

製品名	Anti-Eph receptor B4/HTK antibody
製品の詳細	Rabbit polyclonal to Eph receptor B4/HTK
由来種	Rabbit
アプリケーション	<b>適用あり:</b> WB
種交差性	<b>交差種:</b> Human <b>交差が予測される動物種:</b> Mouse, Cow, Monkey 
免疫原	Synthetic peptide corresponding to Human Eph receptor B4/HTK aa 850-950 conjugated to keyhole limpet haemocyanin. (Peptide available as <a href="#">ab107107</a> )
ポジティブ・コントロール	This antibody gave a positive signal in both Human placenta tissue lysate and A549 whole cell lysate.
特記事項	<p>The Life Science industry has been in the grips of a reproducibility crisis for a number of years. Abcam is leading the way in addressing this with our range of recombinant monoclonal antibodies and knockout edited cell lines for gold-standard validation. Please check that this product meets your needs before purchasing.</p> <p>If you have any questions, special requirements or concerns, please send us an inquiry and/or contact our Support team ahead of purchase. Recommended alternatives for this product can be found below, along with publications, customer reviews and Q&amp;As</p>

### 製品の特性

製品の状態	Liquid
保存方法	Shipped at 4°C. Store at +4°C short term (1-2 weeks). Upon delivery aliquot. Store at -20°C or -80°C. Avoid freeze / thaw cycle.
バッファー	pH: 7.40 Preservative: 0.02% Sodium azide Constituent: PBS
	Batches of this product that have a concentration < 1mg/ml may have BSA added as a stabilising agent. If you would like information about the formulation of a specific lot, please contact our scientific support team who will be happy to help.

精製度	Immunogen affinity purified
ポリ/モノ	ポリクローナル
アイソタイプ	IgG

## アプリケーション

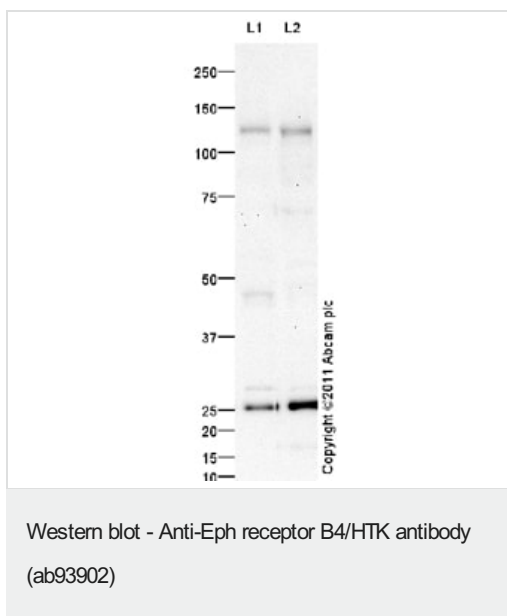
**The Abpromise guarantee** **Abpromise保証は、次のテスト済みアプリケーションにおけるab93902の使用に適用されます**  
 アプリケーションノートには、推奨の開始希釈率がありますが、適切な希釈率につきましてはご検討ください。

アプリケーション	Abreviews	特記事項
WB	★☆☆☆☆ (1)	Use a concentration of 1 µg/ml. Detects a band of approximately 125 kDa (predicted molecular weight: 108 kDa). Abcam recommends using milk as the blocking agent. Abcam welcomes customer feedback and would appreciate any comments regarding this product.

## ターゲット情報

機能	Receptor for members of the ephrin-B family. Binds to ephrin-B2. May have a role in events mediating differentiation and development.
組織特異性	Abundantly expressed in placenta and in a range of primary tissues and malignant cell lines. Expressed in fetal, but not adult, brain, and in primitive and myeloid, but not lymphoid, hematopoietic cells.
配列類似性	Belongs to the protein kinase superfamily. Tyr protein kinase family. Ephrin receptor subfamily. Contains 2 fibronectin type-III domains. Contains 1 protein kinase domain. Contains 1 SAM (sterile alpha motif) domain.
翻訳後修飾	Autophosphorylated.
細胞内局在	Membrane.

## 画像



**All lanes :** Anti-Eph receptor B4/HTK antibody (ab93902) at 1 µg/ml

**Lane 1 :** Human placenta tissue lysate - total protein ([ab29745](#))

**Lane 2 :** A549 (Human lung adenocarcinoma epithelial cell line) Whole Cell Lysate

Lysates/proteins at 10 µg per lane.

### Secondary

**All lanes :** Goat Anti-Rabbit IgG H&L (HRP) preadsorbed ([ab97080](#)) at 1/5000 dilution

Developed using the ECL technique.

Performed under reducing conditions.

**Predicted band size:** 108 kDa

**Observed band size:** 125 kDa

**Additional bands at:** 26 kDa. We are unsure as to the identity of these extra bands.

**Exposure time:** 20 minutes

The predicted molecular weight of Eph receptor B4/HTK is 108 kDa (SwissProt), however we expect to observe a banding pattern at 125 kDa. Abcam recommends using milk as the blocking agent. Abcam welcomes customer feedback and would appreciate any comments regarding this product and the data presented above.

**Please note:** All products are "FOR RESEARCH USE ONLY. NOT FOR USE IN DIAGNOSTIC PROCEDURES"

### Our Abpromise to you: Quality guaranteed and expert technical support

- Replacement or refund for products not performing as stated on the datasheet
- Valid for 12 months from date of delivery
- Response to your inquiry within 24 hours
- We provide support in Chinese, English, French, German, Japanese and Spanish
- Extensive multi-media technical resources to help you
- We investigate all quality concerns to ensure our products perform to the highest standards

If the product does not perform as described on this datasheet, we will offer a refund or replacement. For full details of the Abpromise,

please visit <https://www.abcam.co.jp/abpromise> or contact our technical team.

## **Terms and conditions**

---

- Guarantee only valid for products bought direct from Abcam or one of our authorized distributors