


Anti-EPF antibody [EPR4476] ab108600

リコンビナント RabMAb[®]

★★★★☆ **5 Abreviews** **7 References** **画像数 10**

製品の概要

製品名	Anti-EPF antibody [EPR4476]
製品の詳細	Rabbit monoclonal [EPR4476] to EPF
由来種	Rabbit
アプリケーション	適用あり: WB, IHC-P, ICC/IF 適用なし: Flow Cyt
種交差性	交差種: Mouse, Human 交差が予測される動物種: Rat 
免疫原	Synthetic peptide. This information is proprietary to Abcam and/or its suppliers.
ポジティブ・コントロール	WB: A431, Neuro-2a, A549, and MCF7 cell lysates IHC-P: Human colon and kidney tissues ICC/IF: HeLa cells
特記事項	This product is a recombinant monoclonal antibody, which offers several advantages including: - High batch-to-batch consistency and reproducibility - Improved sensitivity and specificity - Long-term security of supply - Animal-free production For more information see here . Our RabMAb [®] technology is a patented hybridoma-based technology for making rabbit monoclonal antibodies. For details on our patents, please refer to RabMAb[®] patents .

製品の特性

製品の状態	Liquid
保存方法	Shipped at 4°C. Store at -20°C. Stable for 12 months at -20°C.
バッファー	pH: 7.20 Preservative: 0.05% Sodium azide Constituents: 0.1% BSA, 40% Glycerol (glycerin, glycerine), 9.85% Tris glycine, 50% Tissue culture supernatant
精製度	Protein A purified
ポリ/モノ	モノクローナル

クローン名 EPR4476
アイソタイプ IgG

アプリケーション

The Abpromise guarantee **Abpromise保証は、次のテスト済みアプリケーションにおけるab108600の使用に適用されます**
アプリケーションノートには、推奨の開始希釈率がありますが、適切な希釈率につきましてはご検討ください。

アプリケーション	Abreviews	特記事項
WB	★★★★★ (4)	1/10000 - 1/50000. Detects a band of approximately 11 kDa (predicted molecular weight: 11 kDa).
IHC-P		1/250 - 1/500. Perform heat mediated antigen retrieval with citrate buffer pH 6 before commencing with IHC staining protocol.
ICC/IF		1/100 - 1/250.

追加情報 Is unsuitable for Flow Cyt.

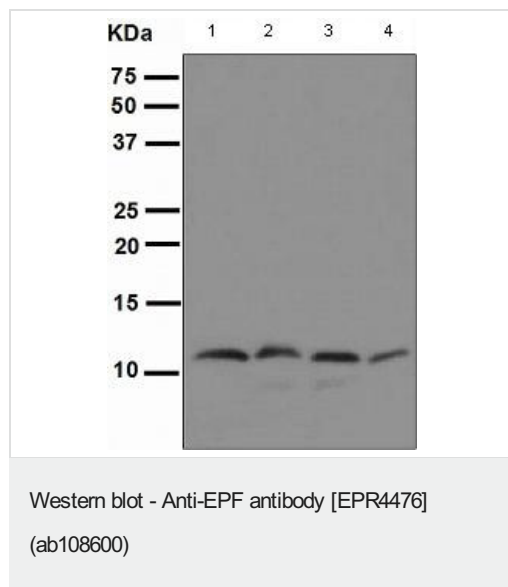
ターゲット情報

機能 Eukaryotic CPN10 homolog which is essential for mitochondrial protein biogenesis, together with CPN60. Binds to CPN60 in the presence of Mg-ATP and suppresses the ATPase activity of the latter.

配列類似性 Belongs to the GroES chaperonin family.

細胞内局在 Mitochondrion matrix.

画像



All lanes : Anti-EPF antibody [EPR4476] (ab108600) at 1/10000 dilution

Lane 1 : A431 cell lysate

Lane 2 : Neuro-2a cell lysate

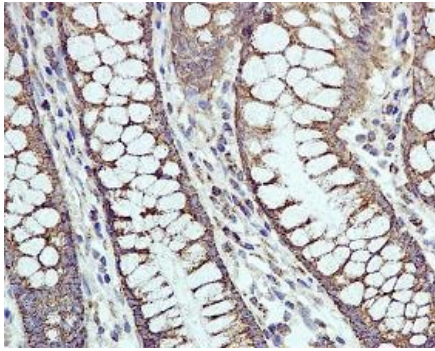
Lane 3 : A549 cell lysate

Lane 4 : MCF7 cell lysate

Lysates/proteins at 10 µg per lane.

Predicted band size: 11 kDa

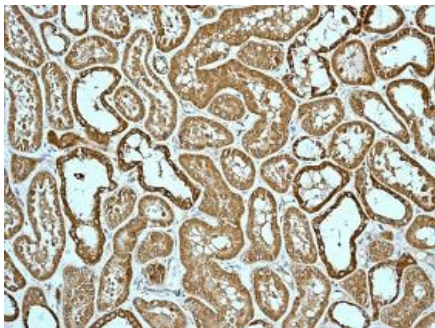
Observed band size: 11 kDa



Immunohistochemistry (Formalin/PFA-fixed paraffin-embedded sections) - Anti-EPF antibody [EPR4476] (ab108600)

Immunohistochemical staining of EPF in paraffin embedded Human colon tissue, using ab108600 at a dilution of 1/250.

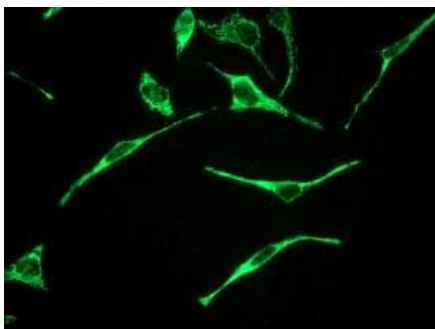
Perform heat mediated antigen retrieval with citrate buffer pH 6 before commencing with IHC staining protocol.



Immunohistochemistry (Formalin/PFA-fixed paraffin-embedded sections) - Anti-EPF antibody [EPR4476] (ab108600)

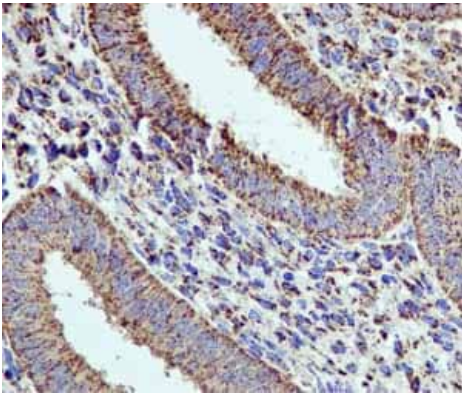
Immunohistochemical staining of EPF in paraffin embedded Human kidney tissue, using ab108600 at a dilution of 1/250.

Perform heat mediated antigen retrieval with citrate buffer pH 6 before commencing with IHC staining protocol.



Immunocytochemistry/ Immunofluorescence - Anti-EPF antibody [EPR4476] (ab108600)

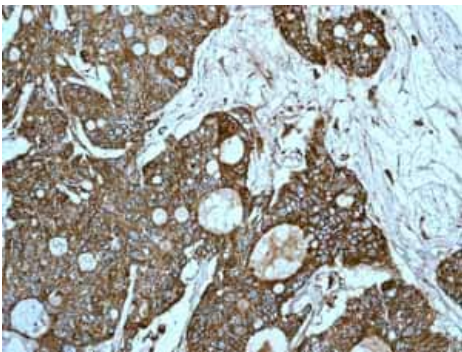
Immunofluorescent staining of EPF in HeLa cells, using ab108600 at a dilution of 1/100.



Immunohistochemistry (Formalin/PFA-fixed paraffin-embedded sections) - Anti-EPF antibody [EPR4476] (ab108600)

ab108600 showing positive staining in Normal uterus tissue.

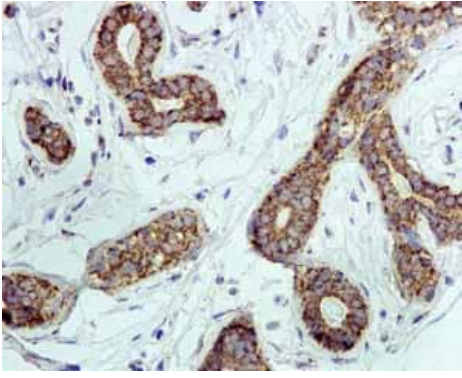
Perform heat mediated antigen retrieval with citrate buffer pH 6 before commencing with IHC staining protocol.



Immunohistochemistry (Formalin/PFA-fixed paraffin-embedded sections) - Anti-EPF antibody [EPR4476] (ab108600)

ab108600 showing positive staining in Ovarian carcinoma tissue.

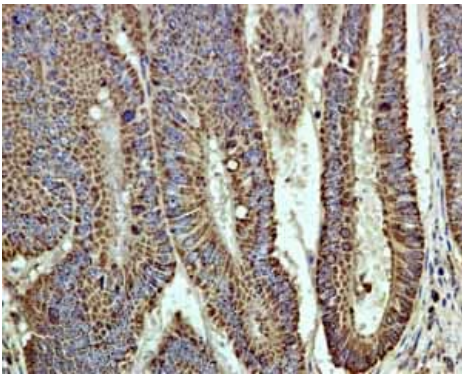
Perform heat mediated antigen retrieval with citrate buffer pH 6 before commencing with IHC staining protocol.



Immunohistochemistry (Formalin/PFA-fixed paraffin-embedded sections) - Anti-EPF antibody [EPR4476] (ab108600)

ab108600 showing positive staining in Normal breast tissue.

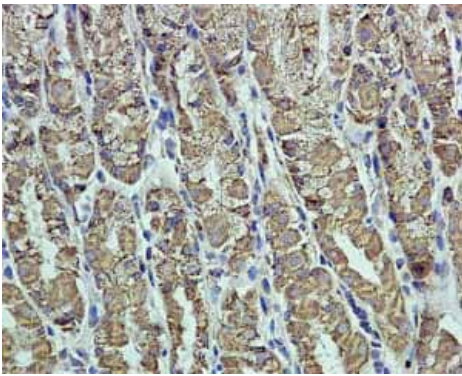
Perform heat mediated antigen retrieval with citrate buffer pH 6 before commencing with IHC staining protocol.



Immunohistochemistry (Formalin/PFA-fixed paraffin-embedded sections) - Anti-EPF antibody [EPR4476] (ab108600)

ab108600 showing positive staining in Colonic adenocarcinoma tissue.

Perform heat mediated antigen retrieval with citrate buffer pH 6 before commencing with IHC staining protocol.



Immunohistochemistry (Formalin/PFA-fixed paraffin-embedded sections) - Anti-EPF antibody [EPR4476] (ab108600)

ab108600 showing positive staining in Normal stomach tissue.

Perform heat mediated antigen retrieval with citrate buffer pH 6 before commencing with IHC staining protocol.

Why choose a recombinant antibody?



Research with confidence
Consistent and reproducible results



Long-term and scalable supply
Recombinant technology



Success from the first experiment
Confirmed specificity



Ethical standards compliant
Animal-free production

Anti-EPF antibody [EPR4476] (ab108600)

Please note: All products are "FOR RESEARCH USE ONLY. NOT FOR USE IN DIAGNOSTIC PROCEDURES"

Our Abpromise to you: Quality guaranteed and expert technical support

- Replacement or refund for products not performing as stated on the datasheet
- Valid for 12 months from date of delivery
- Response to your inquiry within 24 hours
- We provide support in Chinese, English, French, German, Japanese and Spanish
- Extensive multi-media technical resources to help you
- We investigate all quality concerns to ensure our products perform to the highest standards

If the product does not perform as described on this datasheet, we will offer a refund or replacement. For full details of the Abpromise, please visit <https://www.abcam.co.jp/abpromise> or contact our technical team.

Terms and conditions

- Guarantee only valid for products bought direct from Abcam or one of our authorized distributors