


Anti-EPF antibody [EPR4475] ab108611

リコンビナント **RabMAb**

1 References [画像数 3](#)

製品の概要

製品名	Anti-EPF antibody [EPR4475]
製品の詳細	Rabbit monoclonal [EPR4475] to EPF
由来種	Rabbit
アプリケーション	適用あり: Flow Cyt (Intra), WB 適用なし: ICC/IF or IHC-P
種交差性	交差種: Human 交差が予測される動物種: Rat 
免疫原	Synthetic peptide. This information is proprietary to Abcam and/or its suppliers.
ポジティブ・コントロール	HeLa, HepG2, Raji, and Jurkat cell lysates. Permeabilized Jurkat cells.
特記事項	<p>This product is a recombinant monoclonal antibody, which offers several advantages including:</p> <ul style="list-style-type: none"> - High batch-to-batch consistency and reproducibility - Improved sensitivity and specificity - Long-term security of supply - Animal-free production <p>For more information see here.</p> <p>Our RabMAb[®] technology is a patented hybridoma-based technology for making rabbit monoclonal antibodies. For details on our patents, please refer to RabMAb[®] patents.</p> <p>Mouse: We have preliminary internal testing data to indicate this antibody may not react with this species. Please contact us for more information.</p>

製品の特性

製品の状態	Liquid
保存方法	Shipped at 4°C. Store at -20°C. Stable for 12 months at -20°C.
バッファー	pH: 7.20 Preservative: 0.05% Sodium azide Constituents: 0.1% BSA, 40% Glycerol (glycerin, glycerine), 9.85% Tris glycine, 50% Tissue culture supernatant
精製度	Tissue culture supernatant

ポリ/モノ	モノクローナル
クローン名	EPR4475
アイソタイプ	IgG

アプリケーション

The Abpromise guarantee **Abpromise保証は、**次のテスト済みアプリケーションにおけるab108611の使用に適用されます
 アプリケーションノートには、推奨の開始希釈率がありますが、適切な希釈率につきましてはご確認ください。

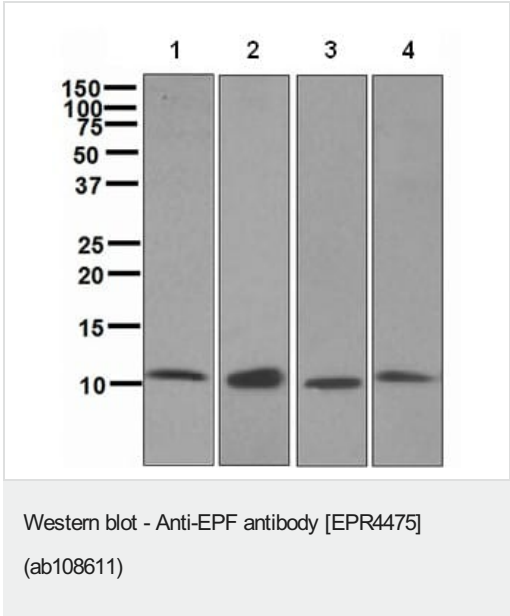
アプリケーション	Abreviews	特記事項
Flow Cyt (Intra)		1/10 - 1/100. ab172730 - Rabbit monoclonal IgG, is suitable for use as an isotype control with this antibody.
WB		1/1000 - 1/10000. Detects a band of approximately 11 kDa (predicted molecular weight: 11 kDa).

追加情報 Is unsuitable for ICC/IF or IHC-P.

ターゲット情報

機能	Eukaryotic CPN10 homolog which is essential for mitochondrial protein biogenesis, together with CPN60. Binds to CPN60 in the presence of Mg-ATP and suppresses the ATPase activity of the latter.
配列類似性	Belongs to the GroES chaperonin family.
細胞内局在	Mitochondrion matrix.

画像

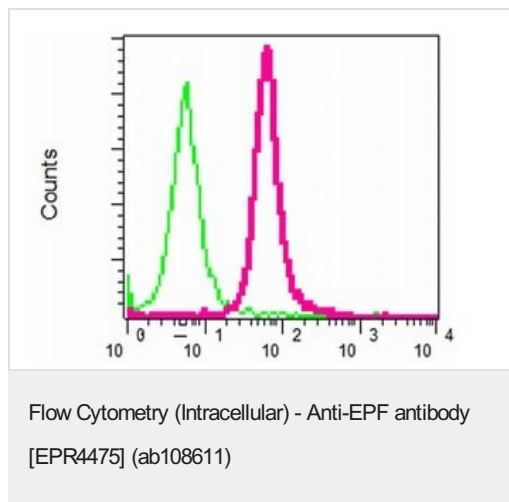


All lanes : Anti-EPF antibody [EPR4475] (ab108611) at 1/1000 dilution

- Lane 1 :** HeLa cell lysate
- Lane 2 :** HepG2 cell lysate
- Lane 3 :** Raji cell lysate
- Lane 4 :** Jurkat cell lysate





Lysates/proteins at 10 µg per lane.

Predicted band size: 11 kDa
Observed band size: 11 kDa



Intracellular flow cytometric analysis of permeabilized Jurkat cells using ab108611 at 1/10 (red) or a Rabbit IgG (negative) (green).

Why choose a recombinant antibody?

 <p>Research with confidence Consistent and reproducible results</p>	 <p>Long-term and scalable supply Recombinant technology</p>
 <p>Success from the first experiment Confirmed specificity</p>	 <p>Ethical standards compliant Animal-free production</p>

Anti-EPF antibody [EPR4475] (ab108611)

Please note: All products are "FOR RESEARCH USE ONLY. NOT FOR USE IN DIAGNOSTIC PROCEDURES"

Our Abpromise to you: Quality guaranteed and expert technical support

- Replacement or refund for products not performing as stated on the datasheet
- Valid for 12 months from date of delivery
- Response to your inquiry within 24 hours
- We provide support in Chinese, English, French, German, Japanese and Spanish
- Extensive multi-media technical resources to help you
- We investigate all quality concerns to ensure our products perform to the highest standards

If the product does not perform as described on this datasheet, we will offer a refund or replacement. For full details of the Abpromise, please visit <https://www.abcam.co.jp/abpromise> or contact our technical team.

Terms and conditions

- Guarantee only valid for products bought direct from Abcam or one of our authorized distributors