

Anti-EPCR/CD201 antibody [RCR-252] ab81712

[5 References](#) [画像数 1](#)

製品の概要

製品名	Anti-EPCR/CD201 antibody [RCR-252]
製品の詳細	Rat monoclonal [RCR-252] to EPCR/CD201
由来種	Rat
アプリケーション	適用あり: Flow Cyt
種交差性	交差種: Human
免疫原	Tissue, cells or virus. This information is proprietary to Abcam and/or its suppliers.
エピトープ	Antibody RCR-252 stains the extracellular domain of human EPCR.
ポジティブ・コントロール	Flow Cyt: HUVEC cells.
特記事項	<p>Ablates APC binding to EPCR/CD201 thus blocking APC-mediated signalling.</p> <p>The Life Science industry has been in the grips of a reproducibility crisis for a number of years. Abcam is leading the way in addressing this with our range of recombinant monoclonal antibodies and knockout edited cell lines for gold-standard validation. Please check that this product meets your needs before purchasing.</p> <p>If you have any questions, special requirements or concerns, please send us an inquiry and/or contact our Support team ahead of purchase. Recommended alternatives for this product can be found below, along with publications, customer reviews and Q&As</p>

製品の特性

製品の状態	Liquid
保存方法	Shipped at 4°C. Upon delivery aliquot and store at -20°C. Avoid freeze / thaw cycles.
バッファー	Constituents: 0.1% BSA, PBS
精製度	Protein A purified
特記事項(精製)	0.2µM filtered
一次抗体 備考	Ablates APC binding to EPCR/CD201 thus blocking APC-mediated signalling.
ポリ/モノ	モノクローナル
クローン名	RCR-252
アイソタイプ	IgG1

アプリケーション

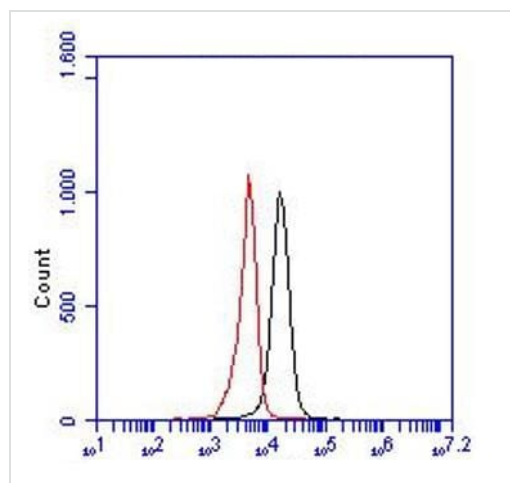
The Abpromise guarantee **Abpromise保証は、次のテスト済みアプリケーションにおけるab81712の使用に適用されます**
アプリケーションノートには、推奨の開始希釈率がありますが、適切な希釈率につきましてはご検討ください。

アプリケーション	Abreviews	特記事項
Flow Cyt		1/50. ab18407 - Rat monoclonal IgG1, is suitable for use as an isotype control with this antibody.

ターゲット情報

機能	Binds activated protein C. Enhances protein C activation by the thrombin-thrombomodulin complex; plays a role in the protein C pathway controlling blood coagulation.
組織特異性	Expressed strongly in the endothelial cells of arteries and veins in heart and lung, less intensely in capillaries in the lung and skin, and not at all in the endothelium of small vessels of the liver and kidney.
翻訳後修飾	N-glycosylated. A soluble form exists; probably released by a metalloprotease. Seems to have the same activity as the membrane-bound form.
細胞内局在	Membrane.

画像



Detection of EPCR in HUVEC cells. Red and black line represent the isotype control and ab81712 at 20 µg/ml, respectively.

Flow Cytometry - Anti-EPCR/CD201 antibody [RCR-252] (ab81712)

Please note: All products are "FOR RESEARCH USE ONLY. NOT FOR USE IN DIAGNOSTIC PROCEDURES"

Our Abpromise to you: Quality guaranteed and expert technical support

- Replacement or refund for products not performing as stated on the datasheet
- Valid for 12 months from date of delivery
- Response to your inquiry within 24 hours

- We provide support in Chinese, English, French, German, Japanese and Spanish
- Extensive multi-media technical resources to help you
- We investigate all quality concerns to ensure our products perform to the highest standards

If the product does not perform as described on this datasheet, we will offer a refund or replacement. For full details of the Abpromise, please visit <https://www.abcam.co.jp/abpromise> or contact our technical team.

Terms and conditions

- Guarantee only valid for products bought direct from Abcam or one of our authorized distributors