

Anti-EPCR/CD201 antibody [M2] ab56689

2 References [画像数 4](#)

製品の概要

製品名	Anti-EPCR/CD201 antibody [M2]
製品の詳細	Mouse monoclonal [M2] to EPCR/CD201
由来種	Mouse
アプリケーション	適用あり: IHC-P, Flow Cyt, WB, ICC/IF
種交差性	交差種: Human, Recombinant fragment
免疫原	Recombinant full length protein corresponding to Human EPCR/CD201 aa 1-250. Database link: Q9UNN8

 [Run BLAST with](#)

 [Run BLAST with](#)

特記事項

This product was changed from ascites to tissue culture supernatant on 15 May 2019. Please note that the dilutions may need to be adjusted accordingly. If you have any questions, please do not hesitate to contact our scientific support team.

The Life Science industry has been in the grips of a reproducibility crisis for a number of years. Abcam is leading the way in addressing this with our range of recombinant monoclonal antibodies and knockout edited cell lines for gold-standard validation. Please check that this product meets your needs before purchasing.

If you have any questions, special requirements or concerns, please send us an inquiry and/or contact our Support team ahead of purchase. Recommended alternatives for this product can be found below, along with publications, customer reviews and Q&As

製品の特性

製品の状態	Liquid
保存方法	Shipped at 4°C. Upon delivery aliquot and store at -20°C or -80°C. Avoid repeated freeze / thaw cycles.
バッファー	pH: 7.4
精製度	Tissue culture supernatant
特記事項(精製)	Purified from TCS.
ポリ/モノ	モノクローナル
クローン名	M2
アイソタイプ	IgG1

アプリケーション

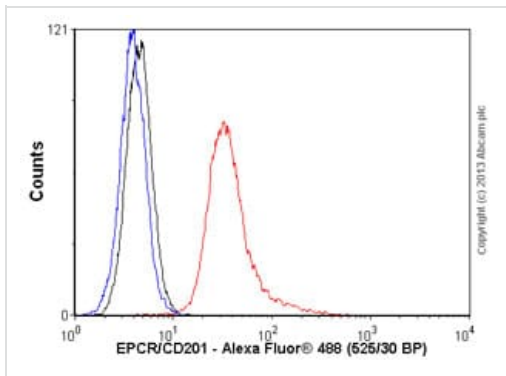
The Abpromise guarantee **Abpromise保証は、**次のテスト済みアプリケーションにおけるab56689の使用に適用されます
アプリケーションノートには、推奨の開始希釈率がありますが、適切な希釈率につきましてはご検討ください。

アプリケーション	Abreviews	特記事項
IHC-P		Use at an assay dependent concentration.
Flow Cyt		Use at an assay dependent concentration. ab170190 - Mouse monoclonal IgG1, is suitable for use as an isotype control with this antibody.
WB		Use at an assay dependent concentration. This antibody has only been tested in WB against the recombinant fragment used as immunogen. We have no data on the detection of endogenous protein.
ICC/IF		Use at an assay dependent concentration.

ターゲット情報

機能	Binds activated protein C. Enhances protein C activation by the thrombin-thrombomodulin complex; plays a role in the protein C pathway controlling blood coagulation.
組織特異性	Expressed strongly in the endothelial cells of arteries and veins in heart and lung, less intensely in capillaries in the lung and skin, and not at all in the endothelium of small vessels of the liver and kidney.
翻訳後修飾	N-glycosylated. A soluble form exists; probably released by a metalloprotease. Seems to have the same activity as the membrane-bound form.
細胞内局在	Membrane.

画像

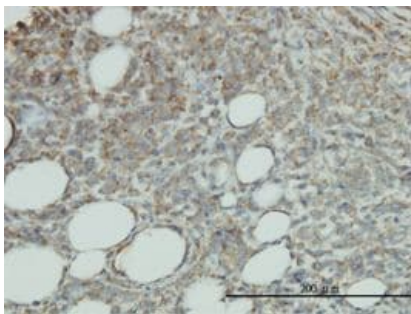


Flow Cytometry - Anti-EPCR/CD201 antibody [M2]
(ab56689)

Overlay histogram showing A549 cells stained with ab56689 (red line). The cells were fixed with 80% methanol (5 min) and incubated in 1x PBS / 10% normal goat serum / 0.3M glycine to block non-specific protein-protein interactions. The cells were then incubated with the antibody (ab56689, 0.01µg/1x10⁶ cells) for 30 min at 22°C. The secondary antibody used was Alexa Fluor® 488 goat anti-mouse IgG (H&L) ([ab150113](#)) at 1/2000 dilution for 30 min at 22°C. Isotype control antibody (black line) was mouse IgG1 [ICIGG1] ([ab91353](#), 1µg/1x10⁶ cells) used under the same conditions.

Unlabelled sample (blue line) was also used as a control. Acquisition of >5,000 events were collected using a 20mW Argon ion laser (488nm) and 525/30 bandpass filter. Please note that Abcam do not have any data for use of this antibody on non-fixed cells. We welcome any customer feedback.

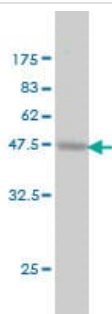
This image was generated using the ascites version of the product.



Immunohistochemistry (Formalin/PFA-fixed paraffin-embedded sections) - Anti-EPCR/CD201 antibody [M2] (ab56689)

EPCR/CD201 antibody (ab56689) used in immunohistochemistry at 3µg/ml on formalin fixed and paraffin embedded human malignant lymphoma, diffuse large B tissue.

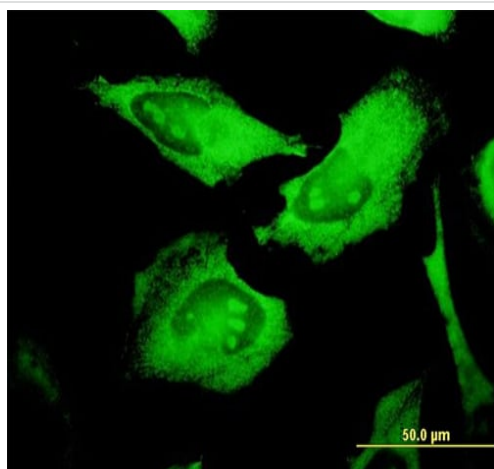
This image was generated using the ascites version of the product.



Western blot - Anti-EPCR/CD201 antibody [M2]
(ab56689)

Western blot against tagged recombinant protein immunogen using ab56689 EPCR/CD201 antibody at 1µg/ml. Predicted band size of immunogen is 52 kDa

This image was generated using the ascites version of the product.



Immunocytochemistry/ Immunofluorescence - Anti-EPCR/CD201 antibody [M2] (ab56689)

Immunofluorescence analysis of HeLa cells, staining EPCR/CD201 with ab56689 at 10 µ/ml.

This image was generated using the ascites version of the product.

Please note: All products are "FOR RESEARCH USE ONLY. NOT FOR USE IN DIAGNOSTIC PROCEDURES"

Our Abpromise to you: Quality guaranteed and expert technical support

- Replacement or refund for products not performing as stated on the datasheet
- Valid for 12 months from date of delivery
- Response to your inquiry within 24 hours
- We provide support in Chinese, English, French, German, Japanese and Spanish
- Extensive multi-media technical resources to help you
- We investigate all quality concerns to ensure our products perform to the highest standards

If the product does not perform as described on this datasheet, we will offer a refund or replacement. For full details of the Abpromise, please visit <https://www.abcam.co.jp/abpromise> or contact our technical team.

Terms and conditions

- Guarantee only valid for products bought direct from Abcam or one of our authorized distributors