

### Anti-ENO1 antibody [EPR19758] ab227978

リコンビナント RabMAb

**10 References** [画像数 11](#)

#### 製品の概要

製品名	Anti-ENO1 antibody [EPR19758]
製品の詳細	Rabbit monoclonal [EPR19758] to ENO1
由来種	Rabbit
特異性	ab227978 does not cross-react with ENO2 or ENO3.
アプリケーション	<b>適用あり:</b> IHC-P, WB, ICC/IF, IP, Flow Cyt (Intra)
種交差性	<b>交差種:</b> Mouse, Rat, Human
免疫原	Synthetic peptide. This information is proprietary to Abcam and/or its suppliers.
ポジティブ・コントロール	WB: MCF7, RAW 264.7, Jurkat, HeLa, NIH/3T3 and C6 whole cell lysates; human skeletal muscle tissue lysate; mouse brain, heart and kidney tissue lysates; rat brain, heart, liver and spleen tissue lysates. IP: Jurkat whole cell lysate. IHC-P: Human pancreas and clear cell renal cell carcinoma tissue; mouse and rat pancreas tissue. ICC/IF: HeLa and NIH/3T3 cells.
特記事項	<p>This product is a recombinant monoclonal antibody, which offers several advantages including:</p> <ul style="list-style-type: none"><li>- High batch-to-batch consistency and reproducibility</li><li>- Improved sensitivity and specificity</li><li>- Long-term security of supply</li><li>- Animal-free production</li></ul> <p>For more information <a href="#">see here</a>.</p> <p>Our RabMAb<sup>®</sup> technology is a patented hybridoma-based technology for making rabbit monoclonal antibodies. For details on our patents, please refer to <a href="#">RabMAb<sup>®</sup> patents</a>.</p>

#### 製品の特性

製品の状態	Liquid
保存方法	Shipped at 4°C. Store at +4°C short term (1-2 weeks). Upon delivery aliquot. Store at -20°C long term. Avoid freeze / thaw cycle.
バッファー	pH: 7.2 Preservative: 0.01% Sodium azide Constituents: 0.05% BSA, 40% Glycerol (glycerin, glycerine), PBS
精製度	Protein A purified
ポリ/モノ	モノクローナル

クローン名 EPR19758

アイソタイプ IgG

## アプリケーション

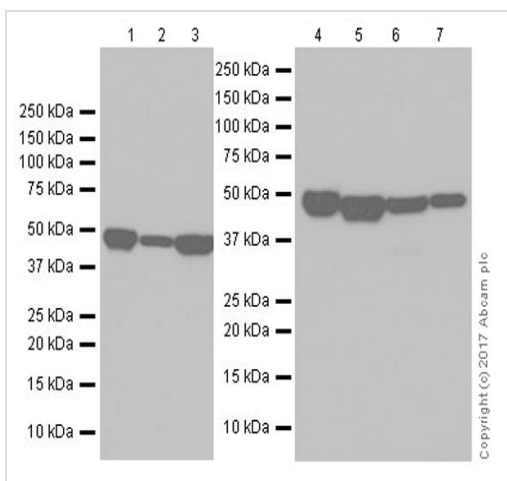
**The Abpromise guarantee** Abpromise保証は、次のテスト済みアプリケーションにおけるab227978の使用に適用されます  
アプリケーションノートには、推奨の開始希釈率がありますが、適切な希釈率につきましてはご検討ください。

アプリケーション	Abreviews	特記事項
IHC-P		1/2000. Perform heat mediated antigen retrieval with Tris/EDTA buffer pH 9.0 before commencing with IHC staining protocol.
WB		1/1000. Predicted molecular weight: 47 kDa.
ICC/IF		1/500.
IP		1/30.
Flow Cyt (Intra)		1/600.

## ターゲット情報

機能	<p>Multifunctional enzyme that, as well as its role in glycolysis, plays a part in various processes such as growth control, hypoxia tolerance and allergic responses. May also function in the intravascular and pericellular fibrinolytic system due to its ability to serve as a receptor and activator of plasminogen on the cell surface of several cell-types such as leukocytes and neurons. Stimulates immunoglobulin production.</p> <p>MBP1 binds to the myc promoter and acts as a transcriptional repressor. May be a tumor suppressor.</p>
組織特異性	<p>The alpha/alpha homodimer is expressed in embryo and in most adult tissues. The alpha/beta heterodimer and the beta/beta homodimer are found in striated muscle, and the alpha/gamma heterodimer and the gamma/gamma homodimer in neurons.</p>
パスウェイ	<p>Carbohydrate degradation; glycolysis; pyruvate from D-glyceraldehyde 3-phosphate: step 4/5.</p>
配列類似性	<p>Belongs to the enolase family.</p>
発生段階	<p>During ontogenesis, there is a transition from the alpha/alpha homodimer to the alpha/beta heterodimer in striated muscle cells, and to the alpha/gamma heterodimer in nerve cells.</p>
翻訳後修飾	<p>ISGylated.</p>
細胞内局在	<p>Nucleus and Cytoplasm. Cell membrane. Cytoplasm &gt; myofibril &gt; sarcomere &gt; M line. Can translocate to the plasma membrane in either the homodimeric (alpha/alpha) or heterodimeric (alpha/gamma) form. ENO1 is localized to the M line.</p>

## 画像



Western blot - Anti-ENO1 antibody [EPR19758] (ab227978)

**All lanes** : Anti-ENO1 antibody [EPR19758] (ab227978) at 1/1000 dilution

**Lane 1** : Mouse brain tissue lysate

**Lane 2** : Mouse heart tissue lysate

**Lane 3** : Mouse kidney tissue lysate

**Lane 4** : Rat brain tissue lysate

**Lane 5** : Rat heart tissue lysate

**Lane 6** : Rat liver tissue lysate

**Lane 7** : Rat spleen tissue lysate

Lysates/proteins at 10 µg per lane.

### Secondary

**All lanes** : Goat Anti-Rabbit IgG H&L (HRP) (**ab97051**) at 1/100000 dilution

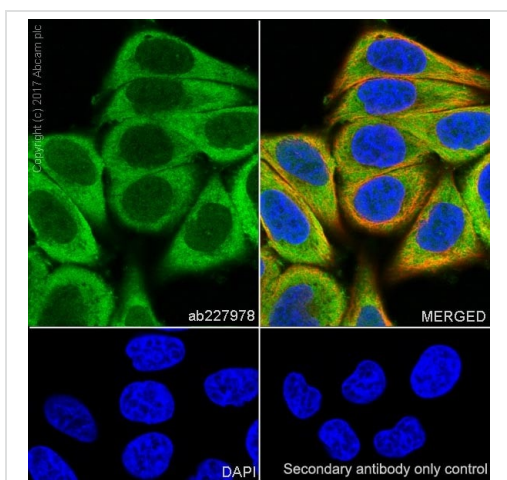
Developed using the ECL technique.

**Predicted band size:** 47 kDa

**Observed band size:** 47 kDa

**Exposure time:** 3 minutes

Blocking and dilution buffer: 5% NFDM/TBST.

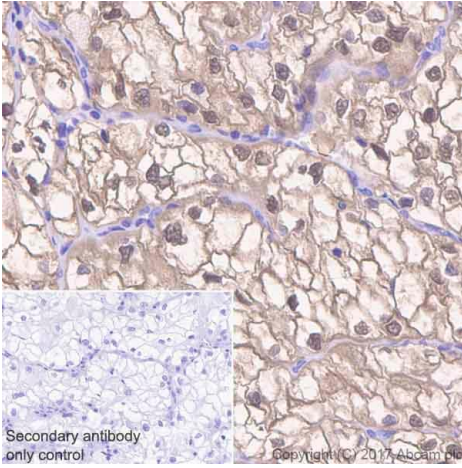


Immunocytochemistry/ Immunofluorescence - Anti-ENO1 antibody [EPR19758] (ab227978)

Immunofluorescent analysis of 4% paraformaldehyde-fixed, 0.1% Triton X-100 permeabilized HeLa (human epithelial cell line from cervix adenocarcinoma) cells labeling ENO1 with ab227978 at 1/500 dilution, followed by Goat Anti-Rabbit IgG H&L (Alexa Fluor<sup>®</sup> 488) (**ab150077**) secondary antibody at 1/1000 dilution (green). Confocal image showing cytoplasmic and weakly nuclear staining in HeLa cell line.

The nuclear counterstain is DAPI (blue). Tubulin is detected with Anti-alpha Tubulin antibody [DM1A] - Microtubule Marker (Alexa Fluor<sup>®</sup> 594) (**ab195889**) at 1/200 dilution (red).

-ve control: PBS instead of primary antibody, followed by Goat Anti-Rabbit IgG H&L (Alexa Fluor<sup>®</sup> 488) (**ab150077**) secondary antibody at 1/1000 dilution .

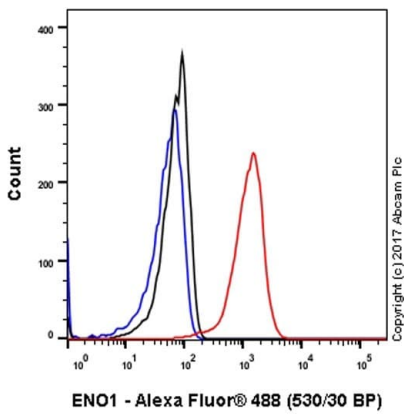


Immunohistochemistry (Formalin/PFA-fixed paraffin-embedded sections) - Anti-ENO1 antibody [EPR19758] (ab227978)

Immunohistochemical analysis of paraffin-embedded human clear cell renal cell carcinoma tissue labeling ENO1 with ab227978 at 1/2000 dilution, followed by a ready to use Goat Anti-Rabbit IgG H&L (HRP). Membranous and nuclear staining in human clear cell kidney carcinoma (PMID: 26037892) is observed. Counter stained with hematoxylin.

Secondary antibody only control: Used PBS instead of primary antibody, secondary antibody is a ready to use Goat Anti-Rabbit IgG H&L (HRP).

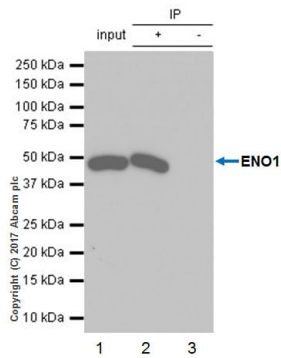
Perform heat mediated antigen retrieval using **ab93684** (Tris/EDTA buffer, pH 9.0).



Flow Cytometry (Intracellular) - Anti-ENO1 antibody [EPR19758] (ab227978)

Intracellular flow cytometric analysis of 4% paraformaldehyde-fixed, 90% methanol-permeabilized HeLa (human epithelial cell line from cervix adenocarcinoma) cells labeling ENO1 with ab227978 at 1/600 dilution (red) compared with a Rabbit IgG, monoclonal [EPR25A] - Isotype Control (**ab172730**) (black) and an unlabeled control (cells without incubation with primary antibody and secondary antibody) (blue).

Goat Anti-Rabbit IgG H&L (Alexa Fluor<sup>®</sup> 488) (**ab150077**), at 1/2000 dilution was used as the secondary antibody.



Immunoprecipitation - Anti-ENO1 antibody [EPR19758] (ab227978)

ENO1 was immunoprecipitated from 0.35 mg of Jurkat (human T cell leukemia cell line from peripheral blood) whole cell lysate with ab227978 at 1/30 dilution. Western blot was performed from the immunoprecipitate using ab227978 at 1/1000 dilution. VeriBlot for IP Detection Reagent (HRP) ([ab131366](#)), was used for detection at 1/10000 dilution.

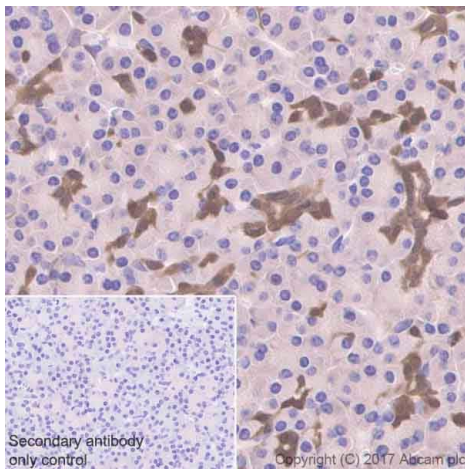
Lane 1: Jurkat whole cell lysate 10 µg (Input).

Lane 2: ab227978 IP in Jurkat whole cell lysate.

Lane 3: Rabbit monoclonal IgG ([ab172730](#)) instead of ab227978 in Jurkat whole cell lysate.

Blocking and dilution buffer and concentration: 5% NFD/MTBST.

Exposure time: 3 seconds.

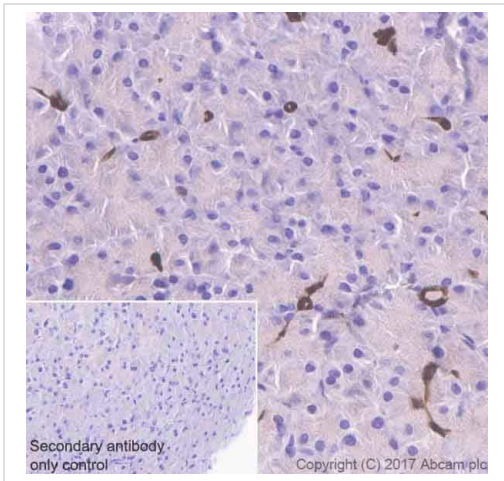


Immunohistochemistry (Formalin/PFA-fixed paraffin-embedded sections) - Anti-ENO1 antibody [EPR19758] (ab227978)

Immunohistochemical analysis of paraffin-embedded human pancreas tissue labeling ENO1 with ab227978 at 1/2000 dilution, followed by a ready to use Goat Anti-Rabbit IgG H&L (HRP). Cytoplasmic and nuclear staining in medium-small ducts of human pancreas (PMID: 19425054) is observed. Counter stained with hematoxylin.

Secondary antibody only control: Used PBS instead of primary antibody, secondary antibody is a ready to use Goat Anti-Rabbit IgG H&L (HRP).

Perform heat mediated antigen retrieval using [ab93684](#) (Tris/EDTA buffer, pH 9.0).

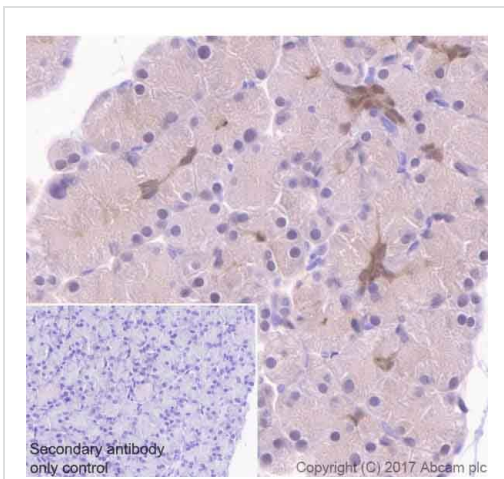


Immunohistochemistry (Formalin/PFA-fixed paraffin-embedded sections) - Anti-ENO1 antibody [EPR19758] (ab227978)

Immunohistochemical analysis of paraffin-embedded mouse pancreas tissue labeling ENO1 with ab227978 at 1/2000 dilution, followed by a ready to use Goat Anti-Rabbit IgG H&L (HRP). Cytoplasmic and nuclear staining in medium-small ducts of mouse pancreas is observed. Counter stained with hematoxylin.

Secondary antibody only control: Used PBS instead of primary antibody, secondary antibody is a ready to use Goat Anti-Rabbit IgG H&L (HRP).

Perform heat mediated antigen retrieval using **ab93684** (Tris/EDTA buffer, pH 9.0).



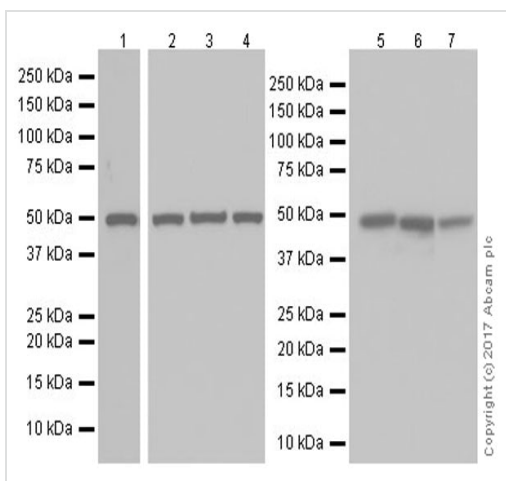
Immunohistochemistry (Formalin/PFA-fixed paraffin-embedded sections) - Anti-ENO1 antibody [EPR19758] (ab227978)

Immunohistochemical analysis of paraffin-embedded rat pancreas tissue labeling ENO1 with ab227978 at 1/2000 dilution, followed by a ready to use Goat Anti-Rabbit IgG H&L (HRP). Cytoplasmic and nuclear staining in medium-small ducts of rat pancreas is observed. Counter stained with hematoxylin.

Secondary antibody only control: Used PBS instead of primary antibody, secondary antibody is a ready to use Goat Anti-Rabbit IgG H&L (HRP).

Perform heat mediated antigen retrieval using **ab93684** (Tris/EDTA buffer, pH 9.0).





Western blot - Anti-ENO1 antibody [EPR19758] (ab227978)

**All lanes** : Anti-ENO1 antibody [EPR19758] (ab227978) at 1/1000 dilution

**Lane 1** : Human skeletal muscle tissue lysate at 20  $\mu$ g

**Lane 2** : MCF7 (human breast adenocarcinoma cell line) whole cell lysate at 20  $\mu$ g

**Lane 3** : HeLa (human epithelial cell line from cervix adenocarcinoma) whole cell lysate at 20  $\mu$ g

**Lane 4** : Jurkat (human T cell leukemia cell line from peripheral blood) whole cell lysate at 20  $\mu$ g

**Lane 5** : C6 (rat glial tumor glial cell line) whole cell lysate at 10  $\mu$ g

**Lane 6** : RAW 264.7 (mouse macrophage cell line transformed with Abelson murine leukemia virus) whole cell lysate at 10  $\mu$ g

**Lane 7** : NIH/3T3 (mouse embryo fibroblast cell line) whole cell lysate at 10  $\mu$ g

### Secondary

**All lanes** : Goat Anti-Rabbit IgG H&L (HRP) ([ab97051](#)) at 1/100000 dilution

Developed using the ECL technique.

**Predicted band size:** 47 kDa

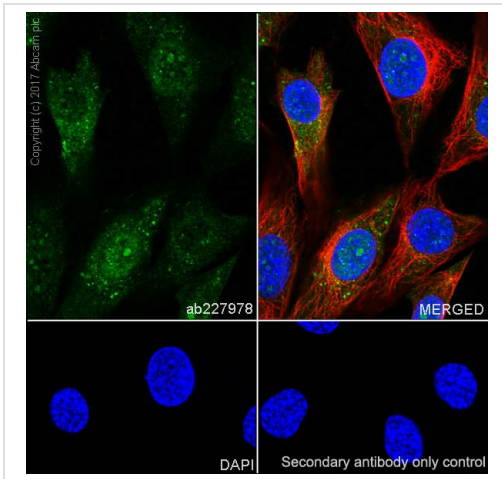
**Observed band size:** 47 kDa

Blocking and dilution buffer: 5% NFDM/TBST.

Exposure times.

Lane 1: 15 seconds.

Lanes 2-7: 1 second.



Immunocytochemistry/ Immunofluorescence - Anti-ENO1 antibody [EPR19758] (ab227978)

Immunofluorescent analysis of 4% paraformaldehyde-fixed, 0.1% Triton X-100 permeabilized NIH/3T3 (mouse embryo fibroblast cell line) cells labeling ENO1 with ab227978 at 1/500 dilution, followed by Goat Anti-Rabbit IgG H&L (Alexa Fluor® 488) (**ab150077**) secondary antibody at 1/1000 dilution (green). Confocal image showing cytoplasmic and nuclear staining in NIH/3T3 cell line.

The nuclear counterstain is DAPI (blue). Tubulin is detected with Anti-alpha Tubulin antibody [DM1A] - Microtubule Marker (Alexa Fluor® 594) (**ab195889**) at 1/200 dilution (red).

-ve control: PBS instead of primary antibody, followed by Goat Anti-Rabbit IgG H&L (Alexa Fluor® 488) (**ab150077**) secondary antibody at 1/1000 dilution .

Why choose a recombinant antibody?

 <p><b>Research with confidence</b> Consistent and reproducible results</p>	 <p><b>Long-term and scalable supply</b> Recombinant technology</p>
 <p><b>Success from the first experiment</b> Confirmed specificity</p>	 <p><b>Ethical standards compliant</b> Animal-free production</p>

Anti-ENO1 antibody [EPR19758] (ab227978)

**Please note:** All products are "FOR RESEARCH USE ONLY. NOT FOR USE IN DIAGNOSTIC PROCEDURES"

### Our Abpromise to you: Quality guaranteed and expert technical support

- Replacement or refund for products not performing as stated on the datasheet
- Valid for 12 months from date of delivery
- Response to your inquiry within 24 hours
- We provide support in Chinese, English, French, German, Japanese and Spanish
- Extensive multi-media technical resources to help you
- We investigate all quality concerns to ensure our products perform to the highest standards

If the product does not perform as described on this datasheet, we will offer a refund or replacement. For full details of the Abpromise, please visit <https://www.abcam.co.jp/abpromise> or contact our technical team.



## Terms and conditions

---

- Guarantee only valid for products bought direct from Abcam or one of our authorized distributors