

### Anti-Endothelium antibody [PAL-E] ab8086

★★★★☆ [2 Abreviews](#) [11 References](#) [画像数 1](#)

#### 製品の概要

製品名	Anti-Endothelium antibody [PAL-E]
製品の詳細	Mouse monoclonal [PAL-E] to Endothelium
由来種	Mouse
特異性	Reactivity with: Lymphatic endothelium :not detectable. Sinus histiocytes :not detectable. Megakaryocytes :not detectable.
アプリケーション	<b>適用あり:</b> IHC-Fr <b>適用なし:</b> WB
種交差性	<b>交差種:</b> Rabbit, Goat, Dog, Human, Pig <b>非交差種:</b> Mouse, Rat, Chicken
免疫原	Tissue, cells or virus corresponding to Human Endothelium.
ポジティブ・コントロール	IHC-Fr: human spleen tissue
特記事項	<p>The antibody only stains human and various animal (goat, rabbit, pig, dog) blood vessels with the exception of arteries.</p> <p>The Life Science industry has been in the grips of a reproducibility crisis for a number of years. Abcam is leading the way in addressing this with our range of recombinant monoclonal antibodies and knockout edited cell lines for gold-standard validation. Please check that this product meets your needs before purchasing.</p> <p>If you have any questions, special requirements or concerns, please send us an inquiry and/or contact our Support team ahead of purchase. Recommended alternatives for this product can be found below, along with publications, customer reviews and Q&amp;As</p>

#### 製品の特性

製品の状態	Liquid
保存方法	Shipped at 4°C. Store at +4°C short term (1-2 weeks). Upon delivery aliquot. Store at -20°C long term.
バッファー	pH: 7.3 Preservative: 0.07% Sodium azide
精製度	Tissue culture supernatant

一次抗体 備考	The antibody only stains human and various animal (goat, rabbit, pig, dog) blood vessels with the exception of arteries.
ポリ/モノ	モノクローナル
クローン名	PAL-E
アイソタイプ	IgG2a

## アプリケーション

**The Abpromise guarantee**      **Abpromise保証は、次のテスト済みアプリケーションにおけるab8086の使用に適用されます**  
 アプリケーションノートには、推奨の開始希釈率がありますが、適切な希釈率につきましてはご検討ください。

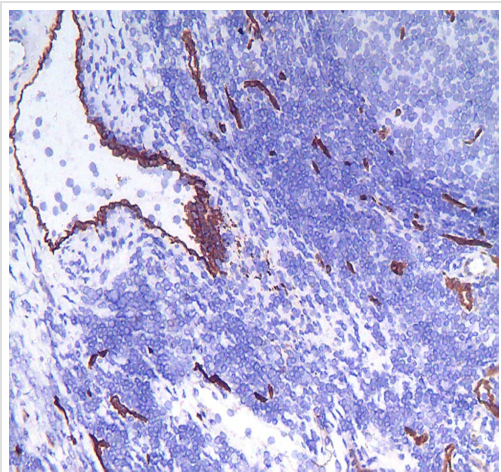
アプリケーション	Abreviews	特記事項
IHC-Fr	★★★★★ (1)	1/100. Fix with acetone.

**追加情報**      Is unsuitable for WB.

## ターゲット情報

**関連性**      The endothelium is located at the interface between the blood and the vessel wall. The cells are in close contact and form a slick layer that prevents blood cell interaction with the vessel wall as blood moves through the vessel lumen. The endothelium consists of simple squamous epithelium that lines the lumen of all blood vessels. It plays a critical role in the mechanics of blood flow, the regulation of coagulation, leukocyte adhesion, and vascular smooth muscle cell growth, and also serves as a barrier to the transvascular diffusion of liquids and solutes. For years the endothelium was thought of as an inert single layer of cells that passively allow the passage of water and other small molecules across the vessel wall. However, this dynamic tissue performs many other active functions, such as the secretion and modification of vasoactive substances and the contraction and relaxation of vascular smooth muscle.

## 画像



Immunohistochemistry (Frozen sections) - Anti-Endothelium antibody [PAL-E] (ab8086)

Immunohistochemistry (Frozen sections) analysis of frozen human sleep tissue section labeling Endothelium with ab8086. The frozen section is fixated using acetone.

The magnification is 100 times.

**Please note:** All products are "FOR RESEARCH USE ONLY. NOT FOR USE IN DIAGNOSTIC PROCEDURES"

### Our Abpromise to you: Quality guaranteed and expert technical support

---

- Replacement or refund for products not performing as stated on the datasheet
- Valid for 12 months from date of delivery
- Response to your inquiry within 24 hours
- We provide support in Chinese, English, French, German, Japanese and Spanish
- Extensive multi-media technical resources to help you
- We investigate all quality concerns to ensure our products perform to the highest standards

If the product does not perform as described on this datasheet, we will offer a refund or replacement. For full details of the Abpromise, please visit <https://www.abcam.co.jp/abpromise> or contact our technical team.

### Terms and conditions

---

- Guarantee only valid for products bought direct from Abcam or one of our authorized distributors