

Anti-Endothelin 1 antibody [TR.ET.48.5] ab2786

[5 Abreviews](#) [65 References](#) [画像数 8](#)

製品の概要

製品名	Anti-Endothelin 1 antibody [TR.ET.48.5]
製品の詳細	Mouse monoclonal [TR.ET.48.5] to Endothelin 1
由来種	Mouse
特異性	Immunohistochemical staining of ET-1 in human corpus cavernosum tissue with this antibody results in staining of endothelial cells. Radioimmune assays can be used to concentrate ET-1 in solution (e.g. serum/plasma, milk, urine).
アプリケーション	適用あり: Flow Cyt, ICC/IF, IHC-P, WB
種交差性	交差種: Mouse, Rat, Human
免疫原	Full length native protein (purified) corresponding to Human Endothelin 1 conjugated to keyhole limpet haemocyanin.
エピトープ	Studies suggest that this antibody binds to an epitope in the region of ET-1 represented by amino acids 8-16.
ポジティブ・コントロール	human bowel
特記事項	<p>The Life Science industry has been in the grips of a reproducibility crisis for a number of years. Abcam is leading the way in addressing this with our range of recombinant monoclonal antibodies and knockout edited cell lines for gold-standard validation. Please check that this product meets your needs before purchasing.</p> <p>If you have any questions, special requirements or concerns, please send us an inquiry and/or contact our Support team ahead of purchase. Recommended alternatives for this product can be found below, along with publications, customer reviews and Q&As</p>

製品の特性

製品の状態	Liquid
保存方法	Shipped at 4°C. Store at +4°C short term (1-2 weeks). Upon delivery aliquot. Store at -20°C or -80°C. Avoid freeze / thaw cycle.
バッファー	Preservative: 0.05% Sodium azide Constituent: PBS
精製度	Protein G purified
ポリ/モノ	モノクローナル

クローン名 TR.ET.48.5
アイソタイプ IgG1

アプリケーション

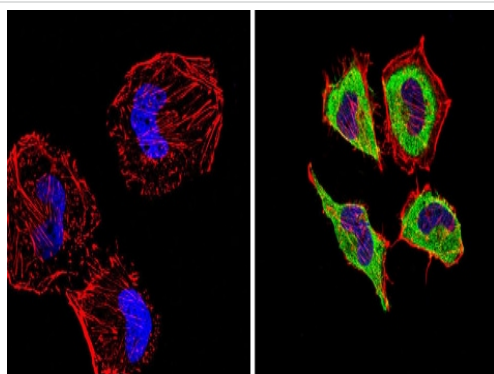
The Abpromise guarantee Abpromise保証は、 次のテスト済みアプリケーションにおけるab2786の使用に適用されます
アプリケーションノートには、推奨の開始希釈率がありますが、適切な希釈率につきましてはご検討ください。

アプリケーション	Abreviews	特記事項
Flow Cyt		Use at an assay dependent concentration. ab170190 - Mouse monoclonal IgG1, is suitable for use as an isotype control with this antibody.
ICC/IF		1/200 - 1/1000.
IHC-P		1/250.
WB		Use at an assay dependent concentration. Predicted molecular weight: 24 kDa.

ターゲット情報

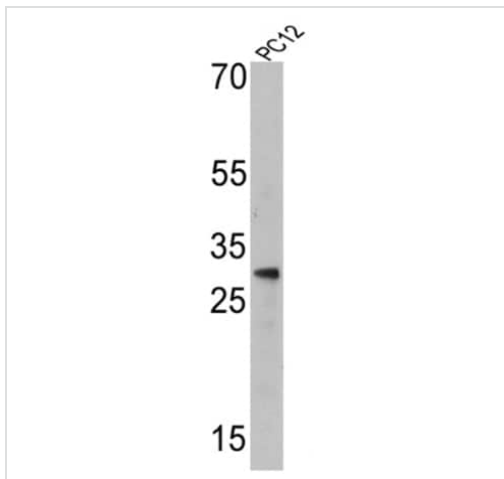
機能 Endothelins are endothelium-derived vasoconstrictor peptides.
組織特異性 Expressed in lung, placental stem villi vessels and in cultured placental vascular smooth muscle cells.
配列類似性 Belongs to the endothelin/sarafotoxin family.
細胞内局在 Secreted.

画像



Immunocytochemistry/ Immunofluorescence - Anti-Endothelin 1 antibody [TR.ET.48.5] (ab2786)

ab2786 labelling Endothelin 1 (green) in the secretion of HeLa cells (right) compared with a negative control (left) by Immunocytochemistry/Immunofluorescence. Formalin-fixed cells were permeabilized with 0.1% Triton X-100 in TBS for 5-10 minutes and blocked with 3% BSA-PBS for 30 minutes at room temperature. Cells were incubated with the primary antibody (1:200 in 3% BSA-PBS) overnight at 4 °C. A DyLight 488-conjugated Goat anti-mouse IgG (H+L) was used as the secondary antibody. Red (phalloidin) - F-actin, Blue (DAPI) - nuclei. Images were taken at a magnification of 60x.

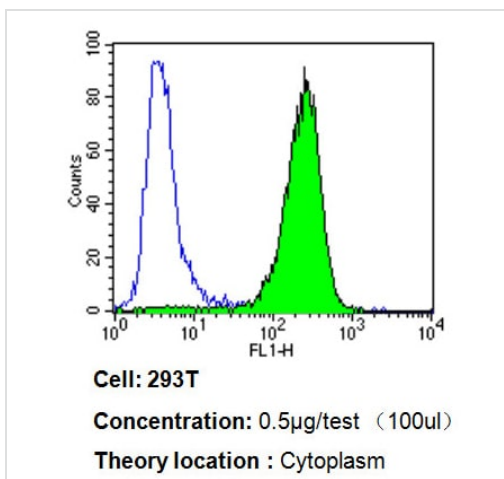


Western blot - Anti-Endothelin 1 antibody
[TR.ET.48.5] (ab2786)

Anti-Endothelin 1 antibody [TR.ET.48.5] (ab2786) at 1/500 dilution
+ PC12 cell lysate at 25 µg

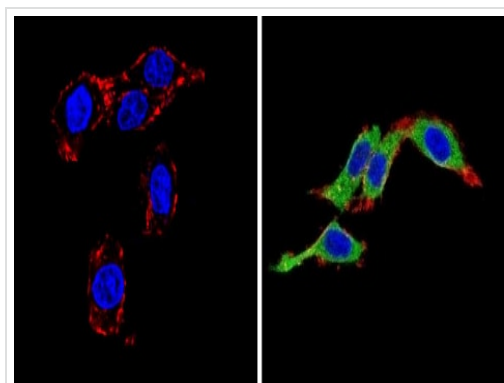
Predicted band size: 24 kDa

Observed band size: 30 kDa



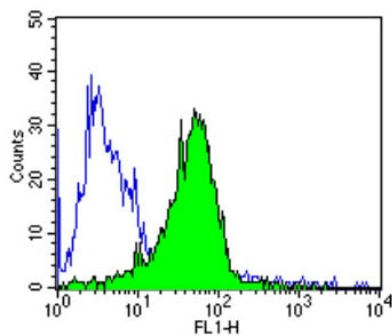
Flow Cytometry - Anti-Endothelin 1 antibody
[TR.ET.48.5] (ab2786)

Flow cytometry analysis of Endothelin 1 showing positive staining in the cytoplasm of 293T cells compared to an isotype control (blue). Cells were harvested, adjusted to a concentration of $1-5 \times 10^6$ cells/ml, fixed with 2% paraformaldehyde, washed with PBS, and incubated with ab2786 (0.5 µg/test) for 60 min at room temperature. Cells were then blocked in a solution of 2% BSA-PBS for 30 min at room temperature, incubated for 40 min at room temperature in the dark using a DyLight 488-conjugated goat anti-mouse IgG (H+L) secondary antibody, and re-suspended in PBS for FACS analysis.



Immunocytochemistry/ Immunofluorescence - Anti-
Endothelin 1 antibody [TR.ET.48.5] (ab2786)

ab2786 labelling Endothelin 1 (green) in the secretion of PC12 cells (right) compared with a negative control (left) by Immunocytochemistry/Immunofluorescence. Formalin-fixed cells were permeabilized with 0.1% Triton X-100 in TBS for 5-10 minutes and blocked with 3% BSA-PBS for 30 minutes at room temperature. Cells were incubated with the primary antibody (1:200 in 3% BSA-PBS) overnight at 4 °C. A DyLight 488-conjugated Goat anti-mouse IgG (H+L) was used as the secondary antibody. Red (phalloidin) - F-actin, Blue (DAPI) - nuclei. Images were taken at a magnification of 60x.



Cell: HepG2

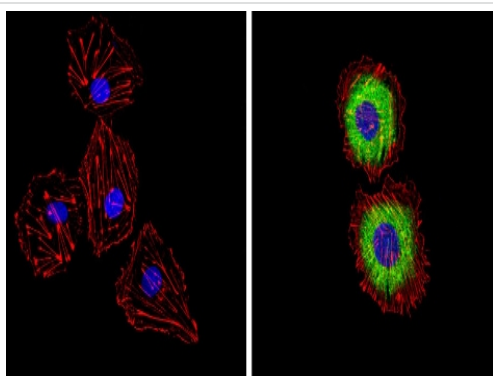
Concentration: 0.5µg/test (100ul)

Theory location : Cytoplasm

Flow Cytometry - Anti-Endothelin 1 antibody

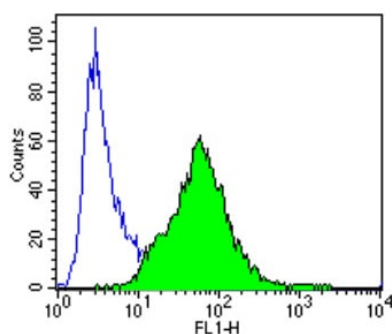
[TR.ET.48.5] (ab2786)

Flow cytometry analysis of Endothelin 1 showing positive staining in the cytoplasm of HepG2 cells compared to an isotype control (blue). Cells were harvested, adjusted to a concentration of $1-5 \times 10^6$ cells/ml, fixed with 2% paraformaldehyde, washed with PBS, and incubated with ab2786 (0.5 µg/test) for 60 min at room temperature. Cells were then blocked in a solution of 2% BSA-PBS for 30 min at room temperature, incubated for 40 min at room temperature in the dark using a Dylight 488-conjugated goat anti-mouse IgG (H+L) secondary antibody, and re-suspended in PBS for FACS analysis.



Immunocytochemistry/ Immunofluorescence - Anti-Endothelin 1 antibody [TR.ET.48.5] (ab2786)

ab2786 labelling Endothelin 1 (green) in the secretion of HUVEC cells (right) compared with a negative control (left) by Immunocytochemistry/Immunofluorescence. Formalin-fixed cells were permeabilized with 0.1% Triton X-100 in TBS for 5-10 minutes and blocked with 3% BSA-PBS for 30 minutes at room temperature. Cells were incubated with the primary antibody (1:200 in 3% BSA-PBS) overnight at 4 °C. A Dylight 488-conjugated Goat anti-mouse IgG (H+L) was used as the secondary antibody. Red (phalloidin) - F-actin, Blue (DAPI) - nuclei. Images were taken at a magnification of 60x.



Cell: 3T3

Concentration: 0.5µg/test (100ul)

Theory location : Cytoplasm

Flow Cytometry - Anti-Endothelin 1 antibody

[TR.ET.48.5] (ab2786)

Flow cytometry analysis of Endothelin 1 showing positive staining in the cytoplasm of 3T3 cells compared to an isotype control (blue). Cells were harvested, adjusted to a concentration of $1-5 \times 10^6$ cells/ml, fixed with 2% paraformaldehyde, washed with PBS, and incubated with ab2786 (0.5 µg/test) for 60 min at room temperature. Cells were then blocked in a solution of 2% BSA-PBS for 30 min at room temperature, incubated for 40 min at room temperature in the dark using a Dylight 488-conjugated goat anti-mouse IgG (H+L) secondary antibody, and re-suspended in PBS for FACS analysis.

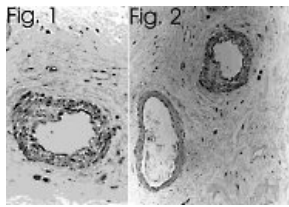


Figure 1 and Figure 2 show immunolocalization of ET-1 in human bowel using ab2786.

Immunohistochemistry (Formalin/PFA-fixed paraffin-embedded sections) - Anti-Endothelin 1 antibody [TR.ET.48.5] (ab2786)

Please note: All products are "FOR RESEARCH USE ONLY. NOT FOR USE IN DIAGNOSTIC PROCEDURES"

Our Abpromise to you: Quality guaranteed and expert technical support

- Replacement or refund for products not performing as stated on the datasheet
- Valid for 12 months from date of delivery
- Response to your inquiry within 24 hours
- We provide support in Chinese, English, French, German, Japanese and Spanish
- Extensive multi-media technical resources to help you
- We investigate all quality concerns to ensure our products perform to the highest standards

If the product does not perform as described on this datasheet, we will offer a refund or replacement. For full details of the Abpromise, please visit <https://www.abcam.co.jp/abpromise> or contact our technical team.

Terms and conditions

- Guarantee only valid for products bought direct from Abcam or one of our authorized distributors