

# Anti-Endothelin 1 antibody ab113697

**5 References** [画像数 3](#)

### 製品の概要

製品名	Anti-Endothelin 1 antibody
製品の詳細	Rabbit polyclonal to Endothelin 1
由来種	Rabbit
アプリケーション	<b>適用あり:</b> IHC-P, WB, ICC/IF
種交差性	<b>交差種:</b> Human <b>交差が予測される動物種:</b> Mouse, Chimpanzee, Gorilla, Orangutan 
免疫原	Synthetic peptide. This information is proprietary to Abcam and/or its suppliers.
ポジティブ・コントロール	This antibody gave a positive signal in Human Lung and Placenta tissue lysates. It also gave a positive signal in FFPE human placenta tissue sections and JEG3 cell line in IF.
特記事項	<p>The Life Science industry has been in the grips of a reproducibility crisis for a number of years. Abcam is leading the way in addressing this with our range of recombinant monoclonal antibodies and knockout edited cell lines for gold-standard validation. Please check that this product meets your needs before purchasing.</p> <p>If you have any questions, special requirements or concerns, please send us an inquiry and/or contact our Support team ahead of purchase. Recommended alternatives for this product can be found below, along with publications, customer reviews and Q&amp;As</p>

### 製品の特性

製品の状態	Liquid
保存方法	Shipped at 4°C. Store at +4°C short term (1-2 weeks). Upon delivery aliquot. Store at -20°C or -80°C. Avoid freeze / thaw cycle.
バッファー	<p>pH: 7.40</p> <p>Preservative: 0.02% Sodium azide</p> <p>Constituent: PBS</p> <p>Batches of this product that have a concentration &lt; 1mg/ml may have BSA added as a stabilising agent. If you would like information about the formulation of a specific lot, please contact our scientific support team who will be happy to help.</p>
精製度	Immunogen affinity purified
ポリ/モノ	ポリクローナル

## アプリケーション

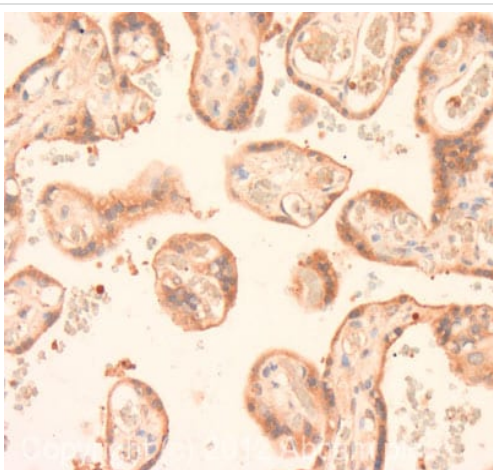
**The Abpromise guarantee** Abpromise保証は、 次のテスト済みアプリケーションにおけるab113697の使用に適用されます  
アプリケーションノートには、推奨の開始希釈率がありますが、適切な希釈率につきましてはご検討ください。

アプリケーション	Abreviews	特記事項
IHC-P		Use a concentration of 5 µg/ml. Perform heat mediated antigen retrieval with citrate buffer pH 6 before commencing with IHC staining protocol.
WB		1/250. Detects a band of approximately 15 kDa (predicted molecular weight: 24 kDa).
ICC/IF		Use a concentration of 5 µg/ml.

## ターゲット情報

機能	Endothelins are endothelium-derived vasoconstrictor peptides.
組織特異性	Expressed in lung, placental stem villi vessels and in cultured placental vascular smooth muscle cells.
配列類似性	Belongs to the endothelin/sarafotoxin family.
細胞内局在	Secreted.

## 画像



Immunohistochemistry (Formalin/PFA-fixed paraffin-embedded sections) - Anti-Endothelin 1 antibody (ab113697)

IHC image of Endothelin 1 staining in human placenta formalin fixed paraffin embedded tissue section, performed on a Leica Bond™ system using the standard protocol F. The section was pre-treated using heat mediated antigen retrieval with sodium citrate buffer (pH6, epitope retrieval solution 1) for 20 mins. The section was then incubated with ab113697, 5µg/ml, for 15 mins at room temperature and detected using an HRP conjugated compact polymer system. DAB was used as the chromogen. The section was then counterstained with haematoxylin and mounted with DPX.

For other IHC staining systems (automated and non-automated) customers should optimize variable parameters such as antigen retrieval conditions, primary antibody concentration and antibody incubation times.



Western blot - Anti-Endothelin 1 antibody  
(ab113697)

**All lanes :** Anti-Endothelin 1 antibody (ab113697) at 1/250 dilution

**Lane 1 :** Lung (Human) Tissue Lysate

**Lane 2 :** Human placenta tissue lysate - total protein ([ab29745](#))

Lysates/proteins at 10 µg per lane.

### Secondary

**All lanes :** Goat Anti-Rabbit IgG H&L (HRP) preadsorbed  
([ab97080](#)) at 1/5000 dilution

Developed using the ECL technique.

Performed under reducing conditions.

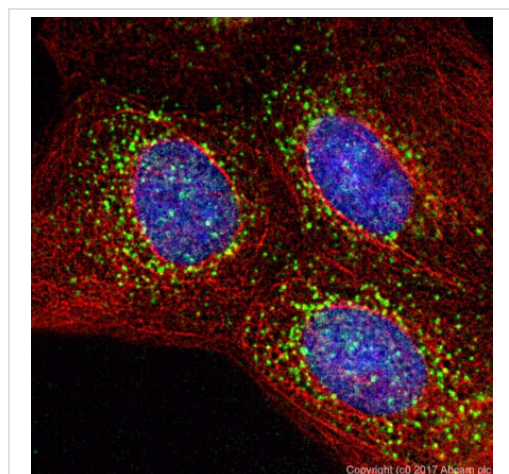
**Predicted band size:** 24 kDa

**Observed band size:** 15 kDa

**Additional bands at:** 80 kDa. We are unsure as to the identity of these extra bands.

**Exposure time:** 12 minutes

The band observed at 15 kDa could potentially be a cleaved form of Endothelin 1 due to the presence of both a signal and pro-peptide.



Immunocytochemistry/ Immunofluorescence - Anti-  
Endothelin 1 antibody (ab113697)

ab113697 stained in JEG3 cells. Cells were fixed with 4% paraformaldehyde (10min) at room temperature and incubated with PBS containing 10% goat serum, 0.3 M glycine, 1% BSA and 0.1% tween for 1h at room temperature to permeabilise the cells and block non-specific protein-protein interactions. The cells were then incubated with the antibody ab113697 at 1µg/ml and [ab7291](#) (Mouse monoclonal [DM1A] to alpha Tubulin - Loading Control) at 1/1000 dilution overnight at +4°C. The secondary antibodies were [ab150120](#) (pseudo-colored red) and [ab150081](#) (colored green) used at 1 µg/ml for 1hour at room temperature. DAPI was used to stain the cell nuclei (colored blue) at a concentration of 1.43µM for 1hour at room temperature

### **Our Abpromise to you: Quality guaranteed and expert technical support**

---

- Replacement or refund for products not performing as stated on the datasheet
- Valid for 12 months from date of delivery
- Response to your inquiry within 24 hours
  
- We provide support in Chinese, English, French, German, Japanese and Spanish
- Extensive multi-media technical resources to help you
- We investigate all quality concerns to ensure our products perform to the highest standards

If the product does not perform as described on this datasheet, we will offer a refund or replacement. For full details of the Abpromise, please visit <https://www.abcam.co.jp/abpromise> or contact our technical team.

### **Terms and conditions**

---

- Guarantee only valid for products bought direct from Abcam or one of our authorized distributors