

### Anti-EMR2 antibody ab75190

#### 画像数 1

#### 製品の概要

---

製品名	Anti-EMR2 antibody
製品の詳細	Rabbit polyclonal to EMR2
由来種	Rabbit
アプリケーション	<b>適用あり:</b> WB
種交差性	<b>交差種:</b> Human
免疫原	Synthetic peptide derived from an internal region of human EMR2
ポジティブ・コントロール	HeLa cell extract
特記事項	<p>The Life Science industry has been in the grips of a reproducibility crisis for a number of years. Abcam is leading the way in addressing this with our range of recombinant monoclonal antibodies and knockout edited cell lines for gold-standard validation. Please check that this product meets your needs before purchasing.</p> <p>If you have any questions, special requirements or concerns, please send us an inquiry and/or contact our Support team ahead of purchase. Recommended alternatives for this product can be found below, along with publications, customer reviews and Q&amp;As</p>

#### 製品の特性

---

製品の状態	Liquid
保存方法	Shipped at 4°C. Upon delivery aliquot and store at -20°C. Avoid freeze / thaw cycles.
バッファー	pH: 7.40 Preservative: 0.02% Sodium azide Constituents: 50% Glycerol (glycerin, glycerine), 0.87% Sodium chloride, PBS
精製度	Without Mg <sup>2+</sup> and Ca <sup>2+</sup> Immunogen affinity purified
特記事項 (精製)	ab75190 was affinity purified from rabbit antiserum by affinity chromatography using epitope specific immunogen.
ポリクローナル	ポリクローナル
アイソタイプ	IgG

## アプリケーション

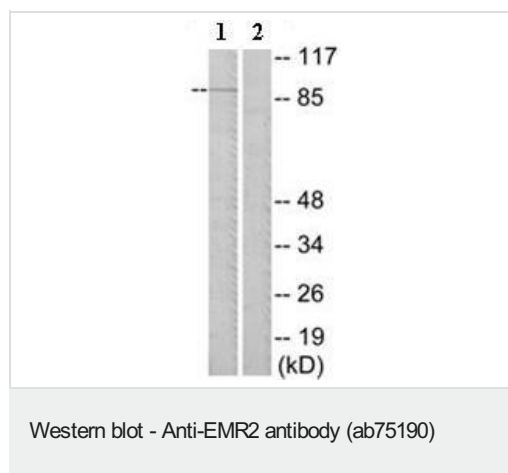
**The Abpromise guarantee** Abpromise保証は、次のテスト済みアプリケーションにおけるab75190の使用に適用されず  
アプリケーションノートには、推奨の開始希釈率がありますが、適切な希釈率につきましてはご検討ください。

アプリケーション	Abreviews	特記事項
WB		1/500 - 1/1000. Predicted molecular weight: 91 kDa.

## ターゲット情報

機能	Receptor probably involved in cell attachment.
組織特異性	Expression is restricted to myeloid cells. Highest expression was found in peripheral blood leukocytes, followed by spleen and lymph nodes, with intermediate to low levels in thymus, bone marrow, fetal liver, placenta, and lung, and no expression in heart, brain, skeletal muscle, kidney, or pancreas. Expression is also detected in monocyte/macrophage and Jurkat cell lines but not in other cell lines tested.
配列類似性	Belongs to the G-protein coupled receptor 2 family. LN-TM7 subfamily. Contains 5 EGF-like domains. Contains 1 GPS domain.
ドメイン	The GPS domain is necessary, but not sufficient for receptor cleavage, which require the entire extracellular stalk. Binding to chondroitin sulfate is mediated by the fourth EGF domain.
翻訳後修飾	Autoproteolytically cleaved into 2 subunits, an extracellular alpha subunit and a seven-transmembrane beta subunit.
細胞内局在	Cell membrane.

## 画像



**All lanes :** Anti-EMR2 antibody (ab75190) at 1/500 dilution

**Lane 1 :** HeLa cell extract

**Lane 2 :** HeLa cell extract with immunising peptide at 10 µg

Lysates/proteins at 10 µg per lane.

**Predicted band size:** 91 kDa

**Observed band size:** 91 kDa

**Please note:** All products are "FOR RESEARCH USE ONLY. NOT FOR USE IN DIAGNOSTIC PROCEDURES"

**Our Abpromise to you: Quality guaranteed and expert technical support**

- Replacement or refund for products not performing as stated on the datasheet
- Valid for 12 months from date of delivery
- Response to your inquiry within 24 hours
  
- We provide support in Chinese, English, French, German, Japanese and Spanish
- Extensive multi-media technical resources to help you
- We investigate all quality concerns to ensure our products perform to the highest standards

If the product does not perform as described on this datasheet, we will offer a refund or replacement. For full details of the Abpromise, please visit <https://www.abcam.co.jp/abpromise> or contact our technical team.

### **Terms and conditions**

---

- Guarantee only valid for products bought direct from Abcam or one of our authorized distributors