


Anti-Emi1 antibody [EPR15320-103] ab187144

リコンビナント **RabMAb**

★★★★☆ **2 Abreviews** **1 References** **画像数 7**

製品の概要

製品名	Anti-Emi1 antibody [EPR15320-103]
製品の詳細	Rabbit monoclonal [EPR15320-103] to Emi1
由来種	Rabbit
アプリケーション	適用あり: WB, IHC-P, ICC/IF, IP
種交差性	交差種: Mouse, Human 交差が予測される動物種: Rat 
免疫原	Recombinant fragment. This information is proprietary to Abcam and/or its suppliers.
ポジティブ・コントロール	HeLa, 293, HepG2 whole cell lysate (ab7900); Human ovarian carcinoma and mouse liver tissues; HeLa and HepG2 cells.
特記事項	<p>This product is a recombinant monoclonal antibody, which offers several advantages including:</p> <ul style="list-style-type: none"> - High batch-to-batch consistency and reproducibility - Improved sensitivity and specificity - Long-term security of supply - Animal-free production <p>For more information see here.</p> <p>Our RabMAb[®] technology is a patented hybridoma-based technology for making rabbit monoclonal antibodies. For details on our patents, please refer to RabMAb[®] patents.</p>

製品の特性

製品の状態	Liquid
保存方法	Shipped at 4°C. Store at +4°C short term (1-2 weeks). Upon delivery aliquot. Store at -20°C long term. Avoid freeze / thaw cycle.
バッファー	<p>pH: 7.2</p> <p>Preservative: 0.01% Sodium azide</p> <p>Constituents: 59% PBS, 40% Glycerol (glycerin, glycerine), 0.05% BSA</p>
精製度	Protein A purified
ポリ/モノ	モノクローナル
クローン名	EPR15320-103

アプリケーション

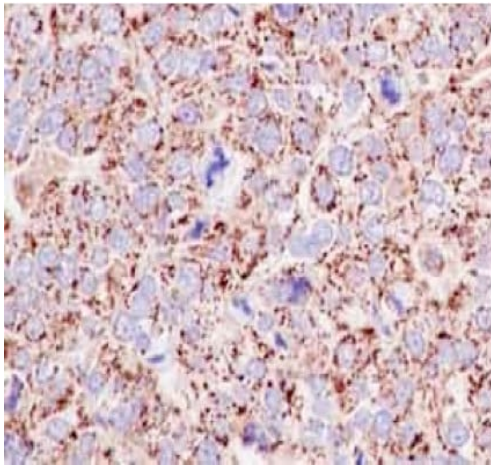
The Abpromise guarantee **Abpromise保証は、**次のテスト済みアプリケーションにおけるab187144の使用に適用されます
アプリケーションノートには、推奨の開始希釈率がありますが、適切な希釈率につきましてはご確認ください。

アプリケーション	Abreviews	特記事項
WB		1/1000 - 1/10000. Detects a band of approximately 56 kDa (predicted molecular weight: 50 kDa).
IHC-P		1/50 - 1/100.
ICC/IF	★★★★★ (1)	1/100 - 1/250.
IP		1/30 - 1/40.

ターゲット情報

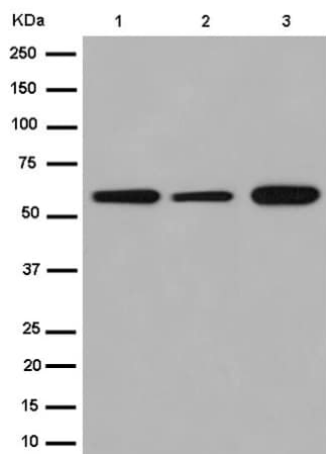
機能	Regulates progression through early mitosis by inhibiting the anaphase promoting complex/cyclosome (APC). Binds to the APC activators CDC20 and FZR1/CDH1 to prevent APC activation. Can also bind directly to the APC to inhibit substrate-binding.
配列類似性	Contains 1 F-box domain. Contains 1 IBR-type zinc finger.
発生段階	Accumulates in late G1 phase, levels rise during S phase and drop in early mitosis.
ドメイン	The C-terminal region is required for inhibition of APC activity.
翻訳後修飾	Phosphorylation by CDK2 and subsequently by PLK1 triggers degradation during early mitosis through ubiquitin-mediated proteolysis by the SCF ubiquitin ligase complex containing the F-box protein BTRC. This degradation is necessary for the activation of APC in late mitosis and subsequent mitotic progression.
細胞内局在	Nucleus. Cytoplasm. Cytoplasm > cytoskeleton > spindle. In interphase, localizes in a punctate manner in the nucleus and cytoplasm with some perinuclear concentration. In mitotic cells, localizes throughout the cell, particularly at the spindle.

画像



Immunohistochemistry (Formalin/PFA-fixed paraffin-embedded sections) - Anti-Emi1 antibody [EPR15320-103] (ab187144)

Immunohistochemical analysis of paraffin embedded Human ovarian carcinoma tissue labeling Emi1 with ab187144 at 1/100 with a prediluted HRP Polymer for Rabbit IgG as secondary antibody.



Western blot - Anti-Emi1 antibody [EPR15320-103] (ab187144)

All lanes : Anti-Emi1 antibody [EPR15320-103] (ab187144) at 1/10000 dilution

Lane 1 : Hela cell lysate

Lane 2 : 293 cell lysate

Lane 3 : HepG2 cell lysate

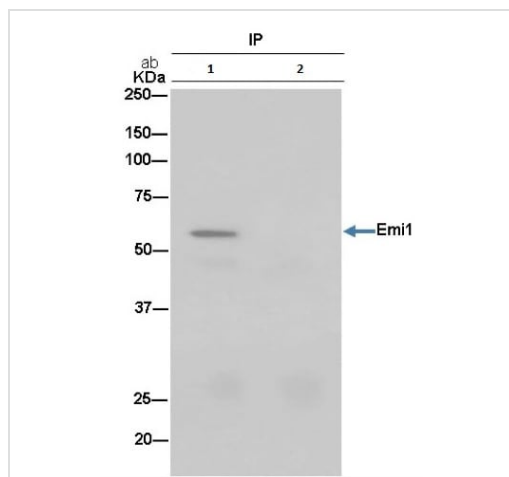
Lysates/proteins at 20 µg per lane.

Secondary

All lanes : Goat Anti-Rabbit IgG, (H+L), Peroxidase conjugated at 1/1000 dilution

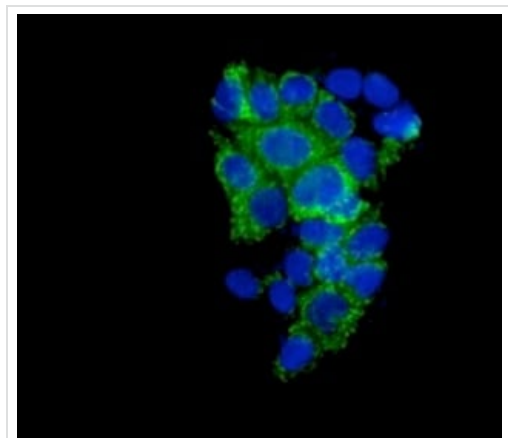
Predicted band size: 50 kDa

Additional bands at: 56 kDa. We are unsure as to the identity of these extra bands.



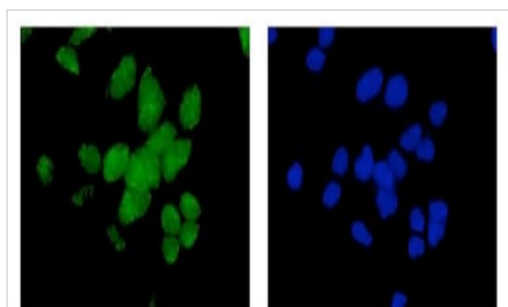
Immunoprecipitation - Anti-Emi1 antibody
[EPR15320-103] (ab187144)

Immunoprecipitation of Emi1 from HepG2 cell lysate using ab187144 at 1/50 (lane 1) or 1X PBS (negative control) (lane 2). Immunostained with ab187144 at 1/1000 and HRP-conjugated anti-rabbit IgG preferentially detecting the non-reduced form of rabbit IgG.



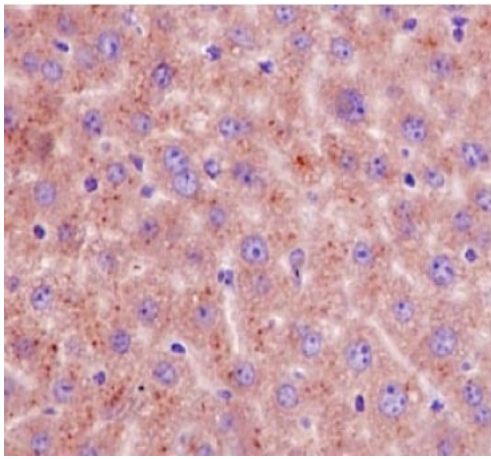
Immunocytochemistry/ Immunofluorescence - Anti-Emi1 antibody [EPR15320-103] (ab187144)

Immunofluorescent analysis of HepG2 cells labeling Emi1 with ab187144 at 1/250 and DAPI staining (blue).



Immunocytochemistry/ Immunofluorescence - Anti-Emi1 antibody [EPR15320-103] (ab187144)

Immunofluorescent analysis of HeLa cells labeling Emi1 with ab187144 at 1/100 and DAPI staining (blue).



Immunohistochemical analysis of paraffin embedded Mouse liver tissue labeling Emi1 with ab187144 at 1/100 with a prediluted HRP Polymer for Rabbit IgG as secondary antibody.

Immunohistochemistry (Formalin/PFA-fixed paraffin-embedded sections) - Anti-Emi1 antibody
[EPR15320-103] (ab187144)

Why choose a recombinant antibody?



Research with confidence
Consistent and reproducible results



Long-term and scalable supply
Recombinant technology



Success from the first experiment
Confirmed specificity



Ethical standards compliant
Animal-free production

Anti-Emi1 antibody [EPR15320-103] (ab187144)

Please note: All products are "FOR RESEARCH USE ONLY. NOT FOR USE IN DIAGNOSTIC PROCEDURES"

Our Abpromise to you: Quality guaranteed and expert technical support

- Replacement or refund for products not performing as stated on the datasheet
- Valid for 12 months from date of delivery
- Response to your inquiry within 24 hours
- We provide support in Chinese, English, French, German, Japanese and Spanish
- Extensive multi-media technical resources to help you
- We investigate all quality concerns to ensure our products perform to the highest standards

If the product does not perform as described on this datasheet, we will offer a refund or replacement. For full details of the Abpromise, please visit <https://www.abcam.co.jp/abpromise> or contact our technical team.

Terms and conditions

- Guarantee only valid for products bought direct from Abcam or one of our authorized distributors