


Anti-ELYS antibody ab14431

1 References [画像数 1](#)

製品の概要

製品名	Anti-ELYS antibody
製品の詳細	Rabbit polyclonal to ELYS
由来種	Rabbit
特異性	We have data to indicate that this antibody may not cross react with Mouse. However, this has not been conclusively tested and expression levels may vary in certain cell lines/tissues.
アプリケーション	適用あり: WB
種交差性	交差種: Human 交差が予測される動物種: Orangutan 
免疫原	Synthetic peptide (Unfortunately the amino acid sequence is considered to be commercially sensitive). The peptide sequence is within the region between aa2220 and aa2302 of human ELYS using the numbering given in entry AAN65622.1 (GeneID 25909).
ポジティブ・コントロール	HeLa cells nuclear extract.
特記事項	<p>The Life Science industry has been in the grips of a reproducibility crisis for a number of years. Abcam is leading the way in addressing this with our range of recombinant monoclonal antibodies and knockout edited cell lines for gold-standard validation. Please check that this product meets your needs before purchasing.</p> <p>If you have any questions, special requirements or concerns, please send us an inquiry and/or contact our Support team ahead of purchase. Recommended alternatives for this product can be found below, along with publications, customer reviews and Q&As</p>

製品の特性

製品の状態	Liquid
保存方法	Shipped at 4°C. Upon delivery aliquot and store at -20°C. Avoid freeze / thaw cycles.
バッファー	pH: 7 Preservative: 0.1% Sodium azide Constituents: 8% PBS, 1.764% Sodium citrate, 1.815% Tris
精製度	Immunogen affinity purified
特記事項(精製)	This antibody was purified using an epitope specific to ELYS immobilized on solid support.
ポリ/モノ	ポリクローナル

アプリケーション

The Abpromise guarantee

Abpromise保証は、次のテスト済みアプリケーションにおけるab14431の使用に適用されます

アプリケーションノートには、推奨の開始希釈率がありますが、適切な希釈率につきましてはご検討ください。

アプリケーション	Abreviews	特記事項
WB		1/2000 - 1/10000. Predicted molecular weight: 272 kDa.

ターゲット情報

機能

Required for the assembly of a functional nuclear pore complex (NPC) on the surface of chromosomes as nuclei form at the end of mitosis. May initiate NPC assembly by binding to chromatin and recruiting the Nup107-160 subcomplex of the NPC. Also required for the localization of the Nup107-160 subcomplex of the NPC to the kinetochore during mitosis and for the completion of cytokinesis.

配列類似性

Belongs to the ELYS family.
Contains 1 A.T hook DNA-binding domain.

翻訳後修飾

Phosphorylated upon DNA damage, probably by ATM or ATR.

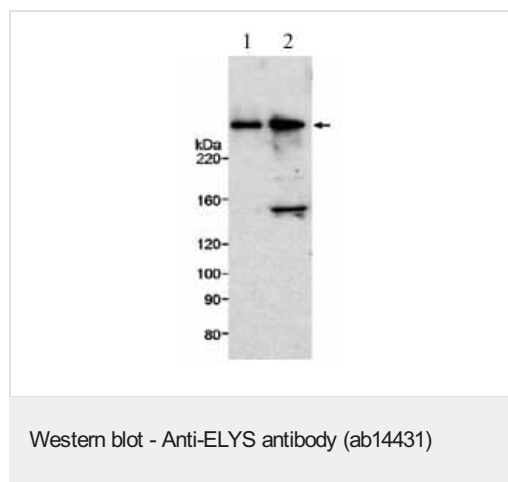
細胞内局在

Cytoplasm. Nucleus matrix. Chromosome > centromere > kinetochore. Nucleus > nucleoplasm. Nucleus > nuclear pore complex. Localizes to the nuclear pore complex (NPC) throughout interphase. Localizes to the kinetochore from prophase, and this appears to require the Nup107-160 subcomplex of the NPC. Localizes to the periphery of chromatin from late anaphase.

製品の状態

There are 2 isoforms produced by alternative splicing.

画像



All lanes : Anti-ELYS antibody (ab14431) at 0.5 µg/ml

Lane 1 : Cell lysates prepared from HeLa cells at 10 µg/ml

Lane 2 : Cell lysates prepared from HeLa cells at 20 µg/ml

Predicted band size: 272 kDa

ab14431 at 0.5mg/ml staining human ELYS by Western blot using chemiluminescence with exposure times of 3-5 minutes. Left lane 10mg HeLa nuclear extract, right lane 20mg.

Our Abpromise to you: Quality guaranteed and expert technical support

- Replacement or refund for products not performing as stated on the datasheet
- Valid for 12 months from date of delivery
- Response to your inquiry within 24 hours

- We provide support in Chinese, English, French, German, Japanese and Spanish
- Extensive multi-media technical resources to help you
- We investigate all quality concerns to ensure our products perform to the highest standards

If the product does not perform as described on this datasheet, we will offer a refund or replacement. For full details of the Abpromise, please visit <https://www.abcam.co.jp/abpromise> or contact our technical team.

Terms and conditions

- Guarantee only valid for products bought direct from Abcam or one of our authorized distributors