

Anti-Elav-type RNA-binding protein ETR3 antibody [EPR13374-2] ab186430

リコンビナント **RabMAb**

★★★★★ **2 Abreviews** **6 References** 画像数 10

製品の概要

| | |
|--------------|---|
| 製品名 | Anti-Elav-type RNA-binding protein ETR3 antibody [EPR13374-2] |
| 製品の詳細 | Rabbit monoclonal [EPR13374-2] to Elav-type RNA-binding protein ETR3 |
| 由来種 | Rabbit |
| アプリケーション | 適用あり: Flow Cyt (Intra), WB, IHC-P, ICC/IF, IP |
| 種交差性 | 交差種: Mouse, Rat, Human |
| 免疫原 | Recombinant fragment. This information is proprietary to Abcam and/or its suppliers. |
| ポジティブ・コントロール | Human fetal liver, K562, HeLa, MCF7, C6 and NIH 3T3 lysates; Human brain tissue; rat lung tissue; MCF7 and HeLa cells. |
| 特記事項 | <p>This product is a recombinant monoclonal antibody, which offers several advantages including:</p> <ul style="list-style-type: none"> - High batch-to-batch consistency and reproducibility - Improved sensitivity and specificity - Long-term security of supply - Animal-free production <p>For more information see here.</p> <p>Our RabMAb[®] technology is a patented hybridoma-based technology for making rabbit monoclonal antibodies. For details on our patents, please refer to RabMAb[®] patents.</p> |

製品の特性

| | |
|-------|--|
| 製品の状態 | Liquid |
| 保存方法 | Shipped at 4°C. Store at +4°C short term (1-2 weeks). Upon delivery aliquot. Store at -20°C long term. Avoid freeze / thaw cycle. |
| バッファー | <p>pH: 7.2</p> <p>Preservative: 0.01% Sodium azide</p> <p>Constituents: 59% PBS, 40% Glycerol (glycerin, glycerine), 0.05% BSA</p> |
| 精製度 | Protein A purified |
| ポリ/モノ | モノクローナル |
| クローン名 | EPR13374-2 |

アプリケーション

The Abpromise guarantee Abpromise保証は、 次のテスト済みアプリケーションにおけるab186430の使用に適用されます
アプリケーションノートには、推奨の開始希釈率がありますが、適切な希釈率につきましてはご検討ください。

| アプリケーション | Abreviews | 特記事項 |
|------------------|-----------|--|
| Flow Cyt (Intra) | | 1/270. ab172730 - Rabbit monoclonal IgG, is suitable for use as an isotype control with this antibody. |
| WB | ★★★★★ (1) | 1/1000 - 1/10000. Detects a band of approximately 54 kDa (predicted molecular weight: 54 kDa). |
| IHC-P | | 1/50 - 1/100. Perform heat mediated antigen retrieval with Tris/EDTA buffer pH 9.0 before commencing with IHC staining protocol. |
| ICC/IF | ★★★★★ (1) | 1/500. |
| IP | | 1/50 - 1/70. |

ターゲット情報

機能

RNA-binding protein implicated in the regulation of several post-transcriptional events. Involved in pre-mRNA alternative splicing, mRNA translation and stability. Mediates exon inclusion and/or exclusion in pre-mRNA that are subject to tissue-specific and developmentally regulated alternative splicing. Specifically activates exon 5 inclusion of TNNT2 in embryonic, but not adult, skeletal muscle. Activates TNNT2 exon 5 inclusion by antagonizing the repressive effect of PTB. Acts as both an activator and repressor of a pair of coregulated exons: promotes inclusion of the smooth muscle (SM) exon but exclusion of the non-muscle (NM) exon in actinin pre-mRNAs. Promotes inclusion of exonS 21 and exclusion of exon 5 of the NMDA receptor R1 pre-mRNA. Involved in the apoB RNA editing activity. Increases COX2 mRNA stability and inhibits COX2 mRNA translation in epithelial cells after radiation injury (By similarity). Modulates the cellular apoptosis program by regulating COX2-mediated prostaglandin E2 (PGE2) expression (By similarity). Binds to (CUG)_n triplet repeats in the 3'-UTR of transcripts such as DMPK. Binds to the muscle-specific splicing enhancer (MSE) intronic sites flanking the TNNT2 alternative exon 5. Binds preferentially to UG-rich sequences, in particular UG repeat and UGUU motifs. Binds to apoB mRNA, specifically to AU-rich sequences located immediatly upstream of the edited cytidine. Binds AU-rich sequences in the 3'-UTR of COX2 mRNA (By similarity). Binds to an intronic RNA element responsible for the silencing of exon 21 splicing (By similarity). Binds to (CUG)_n repeats.

組織特異性

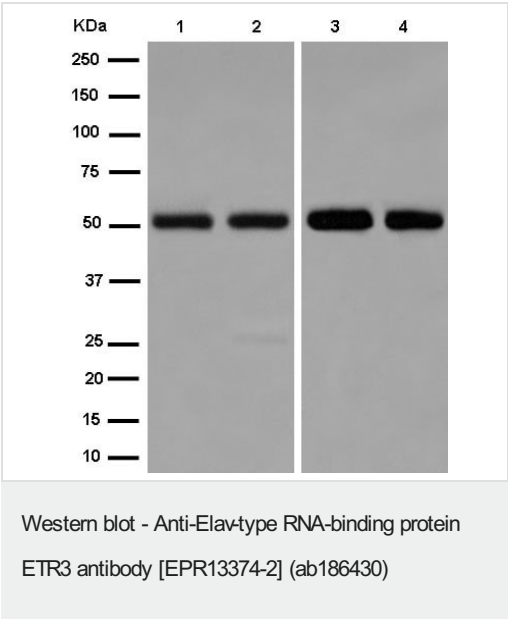
Expressed in frontal cortex. Isoform 1 is expressed in brain and lung. Isoform 2 is expressed in heart, brain, placenta, lung, liver, kidney, skeletal muscle and pancreas. Isoform 4 is expressed in heart, lung, skeletal muscle, kidney and pancreas.

配列類似性

Belongs to the CELF/BRUNOL family.
Contains 3 RRM (RNA recognition motif) domains.

| | |
|-------|---|
| 発生段階 | Isoform 1 is expressed in fetal brain. Isoform 2 is expressed in fetal heart, brain, thymus, lung, liver, skeletal muscle, kidney and spleen. Isoform 4 is expressed in fetal heart, brain, thymus, lung and skeletal muscle. |
| 細胞内局在 | Nucleus. Cytoplasm. Accumulates in the cytoplasm after ionizing radiation (By similarity). Colocalizes with APOBEC1 and A1CF. RNA-binding activity is detected in both nuclear and cytoplasmic compartments. |

画像



All lanes : Anti-Elav-type RNA-binding protein ETR3 antibody [EPR13374-2] (ab186430) at 1/5000 dilution

- Lane 1 :** Human fetal liver lysate
- Lane 2 :** K562 cell lysate
- Lane 3 :** HeLa cell lysate
- Lane 4 :** MCF7 cell lysate

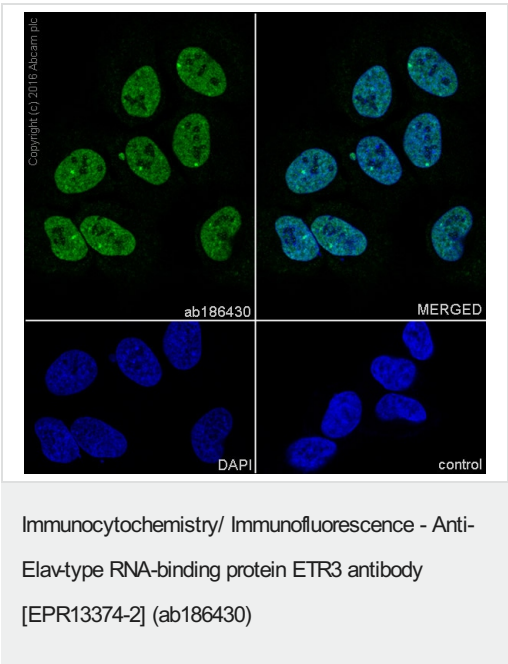
Lysates/proteins at 20 µg per lane.

Secondary

All lanes : Goat Anti-Rabbit IgG, (H+L), Peroxidase conjugate at 1/1000 dilution

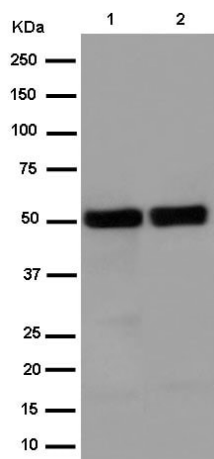
Predicted band size: 54 kDa

Observed band size: 54 kDa



ab186430 staining Elav-type RNA-binding protein ETR3 in HeLa (human cervix adenocarcinoma) cells by ICC/IF (Immunocytochemistry/immunofluorescence). Cells were fixed with 4% PFA and permeabilised with 0.1% triton X-100. Samples were incubated with primary antibody at a dilution of 1/500. A goat anti rabbit IgG (Alexa Fluor® 488) ([ab150077](#)) was used as the secondary antibody at a dilution of 1/1000. DAPI was used as a nuclear counterstain.

Negative control 1:PBS only.



Western blot - Anti-Elav-type RNA-binding protein ETR3 antibody [EPR13374-2] (ab186430)

All lanes : Anti-Elav-type RNA-binding protein ETR3 antibody [EPR13374-2] (ab186430) at 1/5000 dilution

Lane 1 : C6 cell lysate

Lane 2 : NIH 3T3 cell lysate

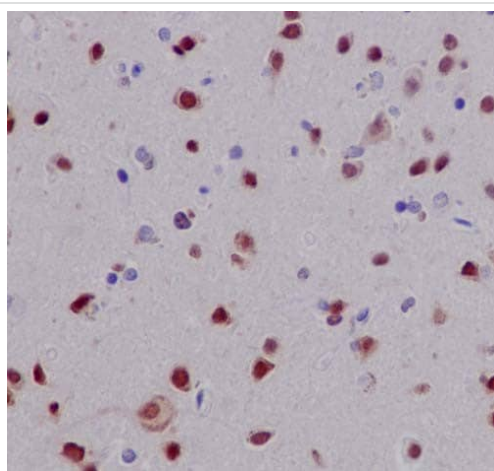
Lysates/proteins at 10 µg per lane.

Secondary

All lanes : Goat Anti-Rabbit IgG, (H+L), Peroxidase conjugate at 1/1000 dilution

Predicted band size: 54 kDa

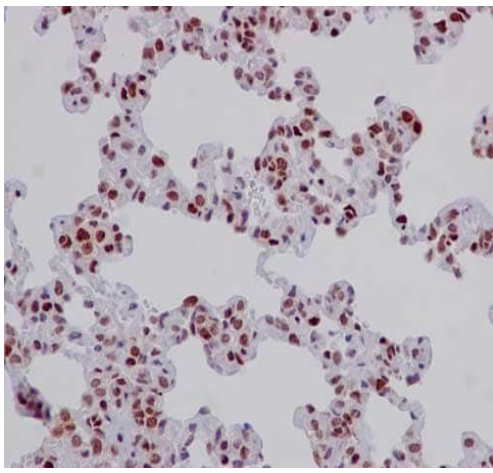
Observed band size: 54 kDa



Immunohistochemistry (Formalin/PFA-fixed paraffin-embedded sections) - Anti-Elav-type RNA-binding protein ETR3 antibody [EPR13374-2] (ab186430)

Immunohistochemical analysis of paraffin-embedded Human brain tissue labeling Elav-type RNA-binding protein ETR3 with ab186430 at 1/100 dilution, followed by prediluted HRP Polymer for Rabbit IgG. Counter stained with Hematoxylin.

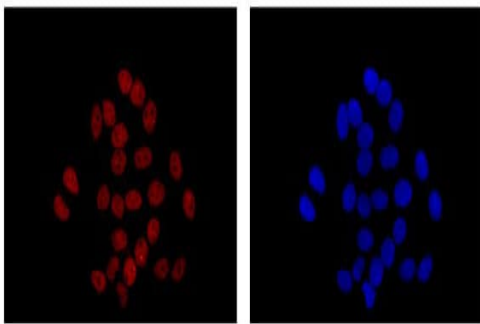
Perform heat mediated antigen retrieval with EDTA buffer pH 9 before commencing with IHC staining protocol.



Immunohistochemistry (Formalin/PFA-fixed paraffin-embedded sections) - Anti-Elav-type RNA-binding protein ETR3 antibody [EPR13374-2] (ab186430)

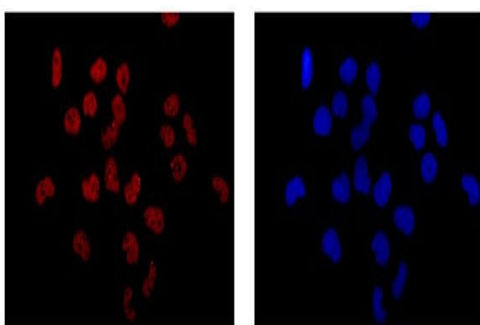
Immunohistochemical analysis of paraffin-embedded rat lung tissue labeling Elav-type RNA-binding protein ETR3 with ab186430 at 1/100 dilution, followed by prediluted HRP Polymer for Rabbit IgG. Counter stained with Hematoxylin.

Perform heat mediated antigen retrieval with EDTA buffer pH 9 before commencing with IHC staining protocol.



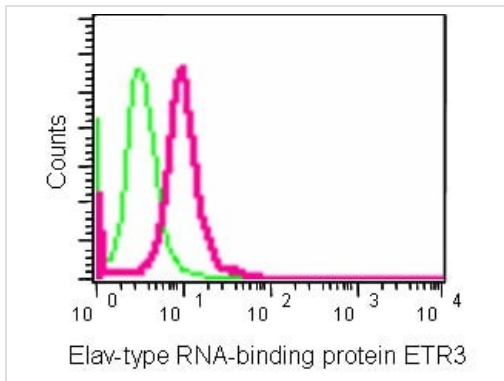
Immunocytochemistry/ Immunofluorescence - Anti-Elav-type RNA-binding protein ETR3 antibody [EPR13374-2] (ab186430)

Immunofluorescent analysis of 4% paraformaldehyde-fixed MCF7 cells labeling Elav-type RNA-binding protein ETR3 with ab186430 at 1/500 dilution, followed by Goat anti rabbit IgG (Alexa Fluor® 555) secondary antibody at 1/200 dilution. Counter stained with Dapi (blue).



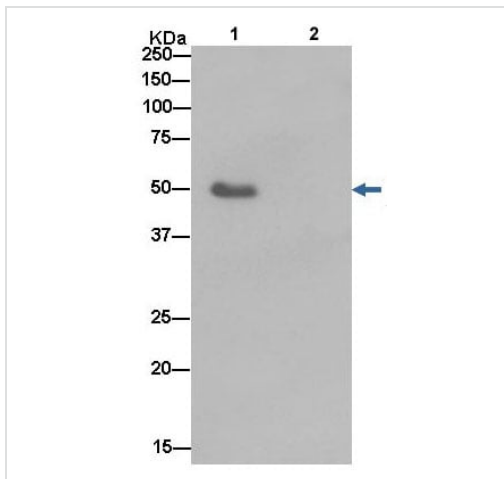
Immunocytochemistry/ Immunofluorescence - Anti-Elav-type RNA-binding protein ETR3 antibody [EPR13374-2] (ab186430)

Immunofluorescent analysis of 4% paraformaldehyde-fixed HeLa cells labeling Elav-type RNA-binding protein ETR3 with ab186430 at 1/500 dilution, followed by Goat anti rabbit IgG (Alexa Fluor® 555) secondary antibody at 1/200 dilution. Counter stained with Dapi (blue).



Intracellular flow cytometric analysis of 2% paraformaldehyde-fixed HeLa cells labeling Elav-type RNA-binding protein ETR3 with ab186430 at 1/270 dilution (red) compared to a Rabbit monoclonal IgG isotype control (green), followed by Goat anti rabbit IgG (FITC) secondary antibody at 1/150 dilution.

Flow Cytometry (Intracellular) - Anti-Elav-type RNA-binding protein ETR3 antibody [EPR13374-2] (ab186430)



Western blot analysis of Elav-type RNA-binding protein ETR3 in HeLa cell lysate immunoprecipitated with ab186430 at 1/50 dilution (Lane 1). Lane 2: PBS instead of HeLa lysate.

Secondary antibody: Anti-Rabbit IgG (HRP), specific to the non-reduced form of IgG at 1/1500 dilution.

Immunoprecipitation - Anti-Elav-type RNA-binding protein ETR3 antibody [EPR13374-2] (ab186430)

Why choose a recombinant antibody?



Research with confidence
Consistent and reproducible results



Long-term and scalable supply
Recombinant technology



Success from the first experiment
Confirmed specificity



Ethical standards compliant
Animal-free production

Anti-Elav-type RNA-binding protein ETR3 antibody
[EPR13374-2] (ab186430)

Please note: All products are "FOR RESEARCH USE ONLY. NOT FOR USE IN DIAGNOSTIC PROCEDURES"

Our Abpromise to you: Quality guaranteed and expert technical support

- Replacement or refund for products not performing as stated on the datasheet
- Valid for 12 months from date of delivery
- Response to your inquiry within 24 hours
- We provide support in Chinese, English, French, German, Japanese and Spanish
- Extensive multi-media technical resources to help you
- We investigate all quality concerns to ensure our products perform to the highest standards

If the product does not perform as described on this datasheet, we will offer a refund or replacement. For full details of the Abpromise, please visit <https://www.abcam.co.jp/abpromise> or contact our technical team.

Terms and conditions

- Guarantee only valid for products bought direct from Abcam or one of our authorized distributors