

Anti-Elastin antibody ab21610

★★★★★ [13 Abreviews](#) [91 References](#) [画像数 2](#)

製品の概要

製品名	Anti-Elastin antibody
製品の詳細	Rabbit polyclonal to Elastin
由来種	Rabbit
特異性	Interacts with tropoelastin and insoluble elastin (there are many shared epitopes between the two forms of the protein).
アプリケーション	適用あり: ICC, IHC-P 適用なし: WB
種交差性	交差種: Mouse
免疫原	Full length protein corresponding to Elastin. ab21610 was generated to the mature, insoluble form of elastin purified from pig, human, dog, chicken, rat and cow.
特記事項	<p>The Life Science industry has been in the grips of a reproducibility crisis for a number of years. Abcam is leading the way in addressing this with our range of recombinant monoclonal antibodies and knockout edited cell lines for gold-standard validation. Please check that this product meets your needs before purchasing.</p> <p>If you have any questions, special requirements or concerns, please send us an inquiry and/or contact our Support team ahead of purchase. Recommended alternatives for this product can be found below, along with publications, customer reviews and Q&As</p>

製品の特性

製品の状態	Liquid
保存方法	Shipped at 4°C. Store at +4°C short term (1-2 weeks). Upon delivery aliquot. Store at -20°C or -80°C. Avoid freeze / thaw cycle.
バッファー	Constituents: Whole serum, 50% Glycerol (glycerin, glycerine)
精製度	Whole antiserum
ポリ/モノ	ポリクローナル
アイソタイプ	IgG

アプリケーション

The Abpromise guarantee

Abpromise保証は、次のテスト済みアプリケーションにおけるab21610の使用に適用されます

アプリケーションノートには、推奨の開始希釈率がありますが、適切な希釈率につきましてはご検討ください。

アプリケーション	Abreviews	特記事項
ICC		Use at an assay dependent concentration.
IHC-P	★★★★★ (8)	Use at an assay dependent concentration.

追加情報

Is unsuitable for WB.

ターゲット情報

機能

Major structural protein of tissues such as aorta and nuchal ligament, which must expand rapidly and recover completely. Molecular determinant of the late arterial morphogenesis, stabilizing arterial structure by regulating proliferation and organization of vascular smooth muscle.

組織特異性

Expressed within the outer myometrial smooth muscle and throughout the arteriolar tree of uterus (at protein level). Also expressed in the large arteries, lung and skin.

関連疾患

Defects in ELN are a cause of autosomal dominant cutis laxa (ADCL) [MIM:123700]. Cutis laxa is a rare connective tissue disorder characterized by loose, hyperextensible skin with decreased resilience and elasticity leading to a premature aged appearance. The skin changes are often accompanied by extracutaneous manifestations, including pulmonary emphysema, bladder diverticula, pulmonary artery stenosis and pyloric stenosis.

Defects in ELN are the cause of supravalvular aortic stenosis (SVAS) [MIM:185500]. SVAS is a congenital narrowing of the ascending aorta which can occur sporadically, as an autosomal dominant condition, or as one component of Williams-Beuren syndrome.

Note=ELN is located in the Williams-Beuren syndrome (WBS) critical region. WBS results from a hemizygous deletion of several genes on chromosome 7q11.23, thought to arise as a consequence of unequal crossing over between highly homologous low-copy repeat sequences flanking the deleted region. Haploinsufficiency of ELN may be the cause of certain cardiovascular and musculo-skeletal abnormalities observed in the disease.

配列類似性

Belongs to the elastin family.

翻訳後修飾

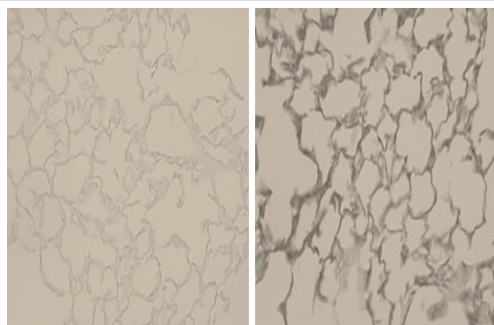
Elastin is formed through the cross-linking of its soluble precursor tropoelastin. Cross-linking is initiated through the action of lysyl oxidase on exposed lysines to form allysine. Subsequent spontaneous condensation reactions with other allysine or unmodified lysine residues result in various bi-, tri-, and tetrafunctional cross-links. The most abundant cross-links in mature elastin fibers are lysinonorleucine, allysine aldol, desmosine, and isodesmosine.

Hydroxylation on proline residues within the sequence motif, GXPG, is most likely 4-hydroxy as this fits the requirement for 4-hydroxylation in vertebrates.

細胞内局在

Secreted > extracellular space > extracellular matrix. Extracellular matrix of elastic fibers.

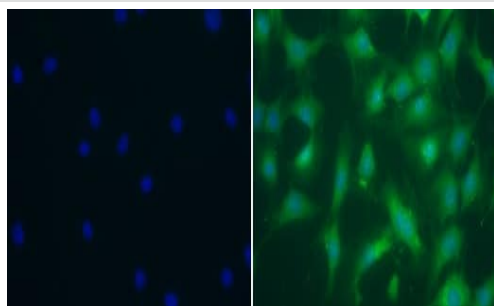
画像



Immunohistochemistry (Formalin/PFA-fixed paraffin-embedded sections) - Anti-Elastin antibody (ab21610)

Immunohistochemical analysis of Bouin's solution fixed (25cm H₂O pressure for 90 min) paraffin-embedded wild type mouse lung (12mo, female) tissue labeling Elastin with ab21610 at 1/50 dilution, followed by HRP-conjugated secondary antibody.

Left Panel: No antibody control.



Immunocytochemistry - Anti-Elastin antibody (ab21610)

Immunofluorescent analysis of 4% paraformaldehyde-fixed, 0.1% Triton X-100 permeabilized NIH-3T3 cells labeling Elastin with ab21610 at 1/200 dilution, followed by a FITC-conjugated secondary antibody. The nuclear counter stain is DAPI (blue).

Please note: All products are "FOR RESEARCH USE ONLY. NOT FOR USE IN DIAGNOSTIC PROCEDURES"

Our Abpromise to you: Quality guaranteed and expert technical support

- Replacement or refund for products not performing as stated on the datasheet
- Valid for 12 months from date of delivery
- Response to your inquiry within 24 hours
- We provide support in Chinese, English, French, German, Japanese and Spanish
- Extensive multi-media technical resources to help you
- We investigate all quality concerns to ensure our products perform to the highest standards

If the product does not perform as described on this datasheet, we will offer a refund or replacement. For full details of the Abpromise, please visit <https://www.abcam.co.jp/abpromise> or contact our technical team.

Terms and conditions

- Guarantee only valid for products bought direct from Abcam or one of our authorized distributors