

### Anti-eIF4A2 antibody ab31218

★★★★★ [7 Abreviews](#) [29 References](#) [画像数 3](#)

#### 製品の概要

---

製品名	Anti-eIF4A2 antibody
製品の詳細	Rabbit polyclonal to eIF4A2
由来種	Rabbit
アプリケーション	<b>適用あり:</b> IP, WB
種交差性	<b>交差種:</b> Mouse, Rat, Human
免疫原	Synthetic peptide corresponding to Human eIF4A2 aa 1-100 conjugated to keyhole limpet haemocyanin. (Peptide available as <a href="#">ab32473</a> )

#### 特記事項

The Life Science industry has been in the grips of a reproducibility crisis for a number of years. Abcam is leading the way in addressing this with our range of recombinant monoclonal antibodies and knockout edited cell lines for gold-standard validation. Please check that this product meets your needs before purchasing.

If you have any questions, special requirements or concerns, please send us an inquiry and/or contact our Support team ahead of purchase. Recommended alternatives for this product can be found below, along with publications, customer reviews and Q&As

#### 製品の特性

---

製品の状態	Liquid
保存方法	Shipped at 4°C. Store at +4°C short term (1-2 weeks). Upon delivery aliquot. Store at -20°C or -80°C. Avoid freeze / thaw cycle.
バッファー	pH: 7.40 Preservative: 0.02% Sodium azide Constituent: PBS  Batches of this product that have a concentration < 1mg/ml may have BSA added as a stabilising agent. If you would like information about the formulation of a specific lot, please contact our scientific support team who will be happy to help.
精製度	Immunogen affinity purified
ポリ/モノ	ポリクローナル
アイソタイプ	IgG

## アプリケーション

**The Abpromise guarantee** **Abpromise保証は、次のテスト済みアプリケーションにおけるab31218の使用に適用されます**

アプリケーションノートには、推奨の開始希釈率がありますが、適切な希釈率につきましてはご検討ください。

アプリケーション	Abreviews	特記事項
IP	★★★★★ (1)	Use at an assay dependent concentration.
WB	★★★★☆ (4)	Use a concentration of 1 µg/ml. Detects a band of approximately 47 kDa (predicted molecular weight: 47 kDa).

## ターゲット情報

### 機能

ATP-dependent RNA helicase which is a subunit of the eIF4F complex involved in cap recognition and is required for mRNA binding to ribosome. In the current model of translation initiation, eIF4A unwinds RNA secondary structures in the 5'-UTR of mRNAs which is necessary to allow efficient binding of the small ribosomal subunit, and subsequent scanning for the initiator codon.

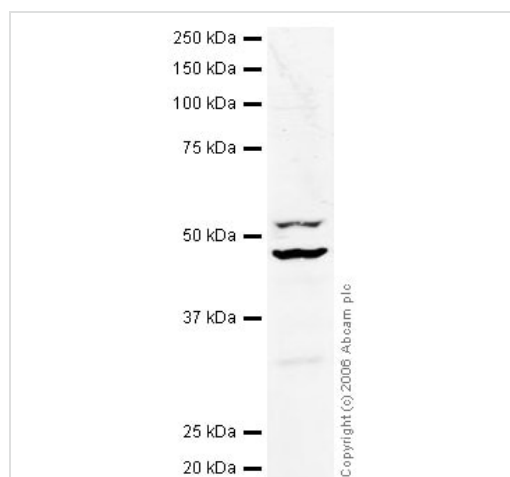
### 配列類似性

Belongs to the DEAD box helicase family. eIF4A subfamily.

Contains 1 helicase ATP-binding domain.

Contains 1 helicase C-terminal domain.

## 画像



Western blot - Anti-eIF4A2 antibody (ab31218)

Anti-eIF4A2 antibody (ab31218) at 1 µg/ml + Jurkat whole cell lysate (**ab7899**) at 20 µg

### Secondary

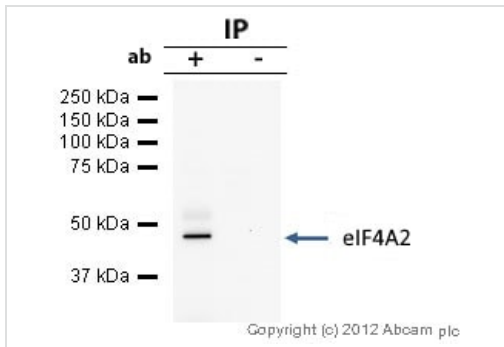
IR Dye 680 Conjugated Goat Anti-Rabbit IgG (H+L) at 1/15000 dilution

Performed under reducing conditions.

**Predicted band size:** 47 kDa

**Observed band size:** 47 kDa

**Additional bands at:** 52 kDa. We are unsure as to the identity of these extra bands.



Immunoprecipitation - Anti-eIF4A2 antibody (ab31218)

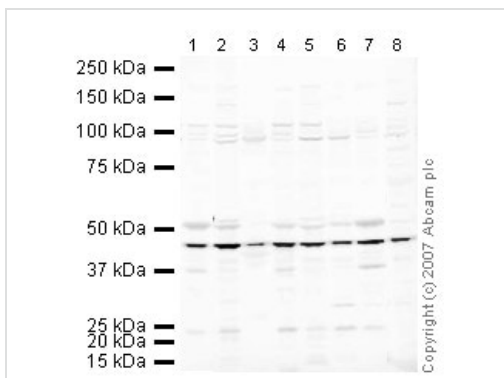
eIF4A2 was immunoprecipitated using 0.5mg Mouse skeletal muscle whole tissue extract, 5µg of Rabbit polyclonal to eIF4A2 and 50µl of protein G magnetic beads (+). No antibody was added to the control (-).

The antibody was incubated under agitation with Protein G beads for 10min, Mouse skeletal muscle whole tissue extract lysate diluted in RIPA buffer was added to each sample and incubated for a further 10min under agitation.

Proteins were eluted by addition of 40µl SDS loading buffer and incubated for 10min at 70°C; 10µl of each sample was separated on a SDS PAGE gel, transferred to a nitrocellulose membrane, blocked with 5% BSA and probed with ab31218.

Secondary: Mouse monoclonal [SB62a] Secondary Antibody to Rabbit IgG light chain (HRP) ([ab99697](#)).

Band: 47kDa: eIF4A2 .



Western blot - Anti-eIF4A2 antibody (ab31218)

**All lanes :** Anti-eIF4A2 antibody (ab31218) at 1 µg/ml

**Lane 1 :** Brain (Mouse) Tissue Lysate

**Lane 2 :** Testis (Mouse) Tissue Lysate

**Lane 3 :** Mouse skeletal muscle tissue lysate - total protein ([ab29711](#))

**Lane 4 :** Spinal Cord (Mouse) Tissue Lysate

**Lane 5 :** Ovary (Mouse) Tissue Lysate

**Lane 6 :** PC12 (Rat adrenal pheochromocytoma cell line) Whole Cell Lysate

**Lane 7 :** Brain (Rat) Tissue Lysate

**Lane 8 :** Heart (Rat) Tissue Lysate

Lysates/proteins at 10 µg per lane.

### Secondary

**All lanes :** IRDye 680 Conjugated Goat Anti-Rabbit IgG (H+L) at 1/10000 dilution

Performed under reducing conditions.

**Predicted band size:** 47 kDa

**Observed band size:** 47 kDa

**Additional bands at:** 51 kDa. We are unsure as to the identity of these extra bands.

**Please note:** All products are "FOR RESEARCH USE ONLY. NOT FOR USE IN DIAGNOSTIC PROCEDURES"

### **Our Abpromise to you: Quality guaranteed and expert technical support**

---

- Replacement or refund for products not performing as stated on the datasheet
- Valid for 12 months from date of delivery
- Response to your inquiry within 24 hours
  
- We provide support in Chinese, English, French, German, Japanese and Spanish
- Extensive multi-media technical resources to help you
- We investigate all quality concerns to ensure our products perform to the highest standards

If the product does not perform as described on this datasheet, we will offer a refund or replacement. For full details of the Abpromise, please visit <https://www.abcam.co.jp/abpromise> or contact our technical team.

### **Terms and conditions**

---

- Guarantee only valid for products bought direct from Abcam or one of our authorized distributors