

Anti-EIF2S1 antibody [EIF2a] ab5369

★★★★★ [4 Abreviews](#) [59 References](#) [画像数 6](#)

製品の概要

製品名	Anti-EIF2S1 antibody [EIF2a]
製品の詳細	Mouse monoclonal [EIF2a] to EIF2S1
由来種	Mouse
アプリケーション	適用あり: ICC, WB, IHC-P
種交差性	交差種: Mouse, Rat, Human, African green monkey
免疫原	Recombinant full length protein (Human).
エピトープ	not mapped.
ポジティブ・コントロール	WB: MCF7, COS-7, PC-12, Jurkat, NIH/3T3, A431 and HeLa cells. IHC: Human colon and breast carcinoma tissue. Human placenta. ICC: HepG2 and A549 cells.
特記事項	<p>The Life Science industry has been in the grips of a reproducibility crisis for a number of years. Abcam is leading the way in addressing this with our range of recombinant monoclonal antibodies and knockout edited cell lines for gold-standard validation. Please check that this product meets your needs before purchasing.</p> <p>If you have any questions, special requirements or concerns, please send us an inquiry and/or contact our Support team ahead of purchase. Recommended alternatives for this product can be found below, along with publications, customer reviews and Q&As</p>

製品の特性

製品の状態	Liquid
保存方法	Shipped at 4°C. Upon delivery aliquot and store at -20°C or -80°C. Avoid repeated freeze / thaw cycles.
バッファー	pH: 7.40 Preservative: 0.1% Sodium azide Constituent: PBS
精製度	Protein A purified
ポリ/モノ	モノクローナル
クローン名	EIF2a
アイソタイプ	IgG1

アプリケーション

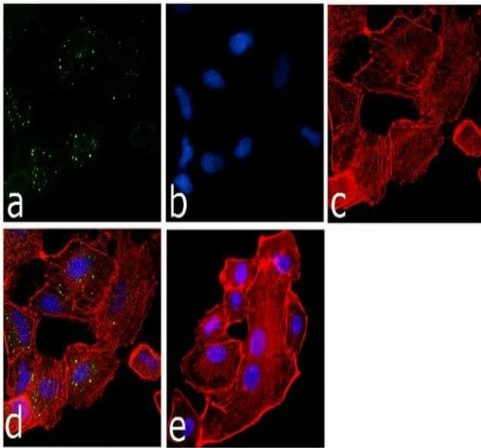
The Abpromise guarantee Abpromise保証は、次のテスト済みアプリケーションにおけるab5369の使用に適用されます
アプリケーションノートには、推奨の開始希釈率がありますが、適切な希釈率につきましてはご確認ください。

アプリケーション	Abreviews	特記事項
ICC		Use a concentration of 1 µg/ml.
WB	★★★★★ (4)	1/500 - 1/1000. Detects a band of approximately 36 kDa (predicted molecular weight: 36 kDa).
IHC-P		1/10 - 1/50. Perform heat mediated antigen retrieval before commencing with IHC staining protocol.

ターゲット情報

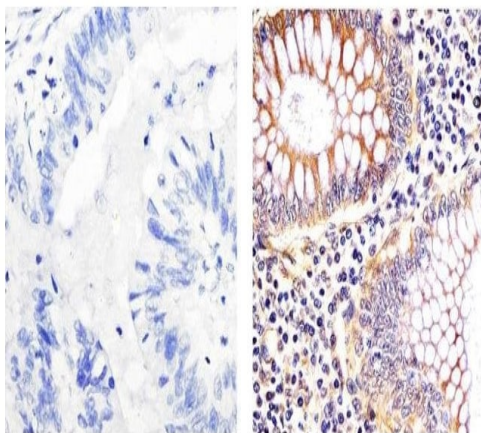
機能	Functions in the early steps of protein synthesis by forming a ternary complex with GTP and initiator tRNA. This complex binds to a 40S ribosomal subunit, followed by mRNA binding to form a 43S preinitiation complex. Junction of the 60S ribosomal subunit to form the 80S initiation complex is preceded by hydrolysis of the GTP bound to eIF-2 and release of an eIF-2-GDP binary complex. In order for eIF-2 to recycle and catalyze another round of initiation, the GDP bound to eIF-2 must exchange with GTP by way of a reaction catalyzed by eIF-2B.
配列類似性	Belongs to the eIF-2-alpha family. Contains 1 S1 motif domain.
翻訳後修飾	Substrate for at least 4 kinases: EIF2AK1/HRI, EIF2AK2/PKR, EIF2AK3/PERK and EIF2AK4/GCN2. Phosphorylation stabilizes the eIF-2/GDP/eIF-2B complex and prevents GDP/GTP exchange reaction, thus impairing the recycling of eIF-2 between successive rounds of initiation and leading to global inhibition of translation (PubMed:15207627, PubMed:18032499). Phosphorylated; phosphorylation on Ser-52 by the EIF2AK4/GCN2 protein kinase occurs in response to amino acid starvation and UV irradiation.
細胞内局在	Cytoplasmic granule. The cytoplasmic granules are stress granules which are a dense aggregation in the cytosol composed of proteins and RNAs that appear when the cell is under stress. Colocalizes with NANOS3 in the stress granules (By similarity).

画像



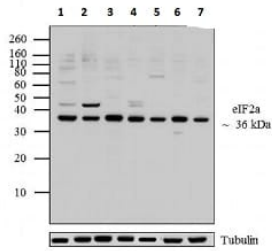
Immunocytochemistry - Anti-EIF2S1 antibody
[EIF2a] (ab5369)

Immunofluorescence analysis of eIF2a was done on 70% confluent log phase A549 cells. The cells were fixed with 4% paraformaldehyde for 15 minutes, permeabilized with 0.25% Triton™ X-100 for 10 minutes, and blocked with 5% BSA for 1 hour at room temperature. The cells were labeled with ab5369 1:250 dilution in 1% BSA and incubated for 3 hours at room temperature and then labeled with Goat anti-Mouse IgG (H+L) Superclonal Secondary Antibody, Alexa Fluor® 488 conjugate at a dilution of 1:2000 for 45 minutes at room temperature (Panel a: green). Nuclei (Panel b: blue) were stained with SlowFade® Gold Antifade Mountant with DAPI. F-actin (Panel c: red) was stained with Rhodamine Phalloidin (1:300). Panel d is a merged image showing Cytoplasmic localization. Panel e is a no primary antibody control. The images were captured at 60X magnification.



Immunohistochemistry (Formalin/PFA-fixed paraffin-embedded sections) - Anti-EIF2S1 antibody [EIF2a] (ab5369)

Immunohistochemistry analysis of EIF 2ALPHA (EIF2A) showing staining in the cytoplasm of paraffin-embedded human colon carcinoma (right) compared to a negative control without primary antibody (left). To expose target proteins, antigen retrieval was performed using 10mM sodium citrate (pH 6.0), microwaved for 8-15 min. Following antigen retrieval, tissues were blocked in 3% H2O2-methanol for 15 min at room temperature, washed with ddH2O and PBS, and then probed with ab5369.



Western blot - Anti-EIF2S1 antibody [EIF2a]
(ab5369)

All lanes : Anti-EIF2S1 antibody [EIF2a] (ab5369)

Lane 1 : COS-7 (african green monkey kidney fibroblast-like cell line) whole cell lysate at 20 µg

Lane 2 : MCF7 (human breast adenocarcinoma cell line) whole cell lysate at 20 µg

Lane 3 : PC-12 (rat adrenal gland pheochromocytoma cell line) whole cell lysate at 20 µg

Lane 4 : HeLa (human epithelial cell line from cervix adenocarcinoma) whole cell lysate

Lane 5 : Jurkat (human T cell leukemia cell line from peripheral blood) whole cell lysate

Lane 6 : NIH/3T3 (mouse embryonic fibroblast cell line) whole cell lysate

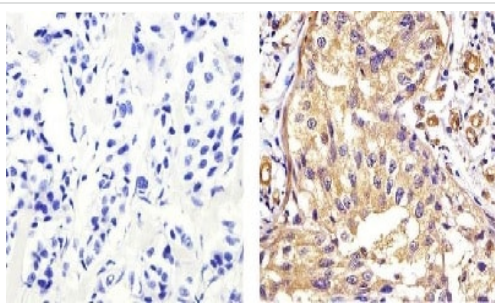
Lane 7 : A431 (human epidermoid carcinoma cell line) whole cell lysate

Secondary

Lanes 1-4 & 6-7 : Goat anti-Mouse IgG (H+L) Secondary Antibody, HRP conjugate at 1/4000 dilution

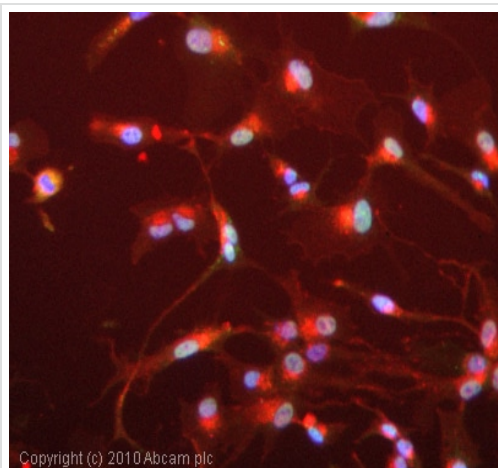
Lane 5 : Goat anti-Mouse IgG (H+L) Secondary Antibody, HRP conjugate

Predicted band size: 36 kDa



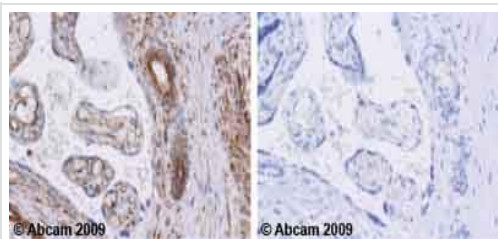
Immunohistochemistry (Formalin/PFA-fixed paraffin-embedded sections) - Anti-EIF2S1 antibody [EIF2a]
(ab5369)

Immunohistochemical analysis of human colon carcinoma (right) compared to a negative control (left) using ab5369 at the dilution 1/10.



Immunocytochemistry - Anti-EIF2S1 antibody
[EIF2a] (ab5369)

ICC/IF image of ab5369 stained HepG2 cells. The cells were 4% formaldehyde fixed (10 min) and then incubated in 1%BSA / 10% normal goat serum / 0.3M glycine in 0.1% PBS-Tween for 1h to permeabilise the cells and block non-specific protein-protein interactions. The cells were then incubated with the antibody (ab5369, 5µg/ml) overnight at +4°C. The secondary antibody (green) was Alexa Fluor® 488 goat anti-mouse IgG (H+L) used at a 1/1000 dilution for 1h. Alexa Fluor® 594 WGA was used to label plasma membranes (red) at a 1/200 dilution for 1h. DAPI was used to stain the cell nuclei (blue) at a concentration of 1.43µM.



Immunohistochemistry (Formalin/PFA-fixed paraffin-embedded sections) - Anti-EIF2S1 antibody [EIF2a] (ab5369)

Ab5369 staining EIF2S1 in human placenta. Staining is localised to the cytoplasm.

Left panel: with primary antibody at 2 ug/ml. Right panel: isotype control.

Sections were stained using an automated system DAKO Autostainer Plus , at room temperature. Sections were rehydrated and antigen retrieved with the Dako 3-in-1 AR buffer citrate pH 6.0 in a DAKO PT Link. Slides were peroxidase blocked in 3% H₂O₂ in methanol for 10 minutes. They were then blocked with Dako Protein block for 10 minutes (containing casein 0.25% in PBS), then incubated with primary antibody for 20 minutes, and detected with Dako Envision Flex amplification kit for 30 minutes. Colorimetric detection was completed with diaminobenzidine for 5 minutes. Slides were counterstained with Haematoxylin and coverslipped under DePeX. Please note that for manual staining we recommend to optimize the primary antibody concentration and incubation time (overnight incubation), and amplification may be required.

Please note: All products are "FOR RESEARCH USE ONLY. NOT FOR USE IN DIAGNOSTIC PROCEDURES"

Our Abpromise to you: Quality guaranteed and expert technical support

- Replacement or refund for products not performing as stated on the datasheet
- Valid for 12 months from date of delivery
- Response to your inquiry within 24 hours

- We provide support in Chinese, English, French, German, Japanese and Spanish
- Extensive multi-media technical resources to help you
- We investigate all quality concerns to ensure our products perform to the highest standards

If the product does not perform as described on this datasheet, we will offer a refund or replacement. For full details of the Abpromise, please visit <https://www.abcam.co.jp/abpromise> or contact our technical team.

Terms and conditions

- Guarantee only valid for products bought direct from Abcam or one of our authorized distributors