

### Anti-eIF2A antibody [EPR11041] ab157478

KO 評価済 リコンビナント RabMAb

1 References 画像数 5

#### 製品の概要

製品名	Anti-eIF2A antibody [EPR11041]
製品の詳細	Rabbit monoclonal [EPR11041] to eIF2A
由来種	Rabbit
アプリケーション	<b>適用あり:</b> WB, ICC/IF <b>適用なし:</b> Flow Cyt, IHC-P or IP
種交差性	<b>交差種:</b> Human
免疫原	Synthetic peptide within Human eIF2A. The exact sequence is proprietary.
ポジティブ・コントロール	Ramos, MOLT4, U87-MG and Raji cell lysates; Raji cells. ICC/IF: HAP1 wildtype and HAP1-eIF2A knockout cells.
特記事項	<p>This product is a recombinant monoclonal antibody, which offers several advantages including:</p> <ul style="list-style-type: none"> <li>- High batch-to-batch consistency and reproducibility</li> <li>- Improved sensitivity and specificity</li> <li>- Long-term security of supply</li> <li>- Animal-free production</li> </ul> <p>For more information <a href="#">see here</a>.</p> <p>Our RabMAb<sup>®</sup> technology is a patented hybridoma-based technology for making rabbit monoclonal antibodies. For details on our patents, please refer to <a href="#">RabMAb<sup>®</sup> patents</a>.</p> <p>Mouse, Rat: We have preliminary internal testing data to indicate this antibody may not react with these species. Please contact us for more information.</p>

#### 製品の特性

製品の状態	Liquid
保存方法	Shipped at 4°C. Store at -20°C.
バッファー	pH: 7.2 Preservative: 0.01% Sodium azide Constituents: 9% PBS, 40% Glycerol (glycerin, glycerine), 0.05% BSA, 50% Tissue culture supernatant
精製度	Tissue culture supernatant

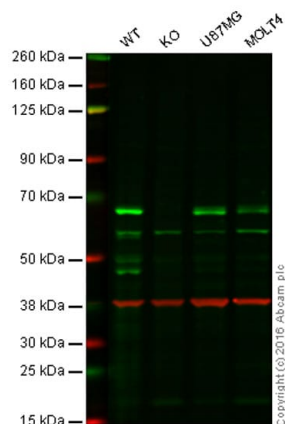
## アプリケーション

アプリケーション	Abreviews	特記事項
WB		1/1000 - 1/5000. Predicted molecular weight: 65 kDa.
ICC/IF		Use a concentration of 1 µg/ml.

## ターゲット情報

組織特異性	Widely expressed. Expressed at higher level in pancreas, heart, brain and placenta.
配列類似性	Belongs to the WD repeat EIF2A family. Contains 3 WD repeats.

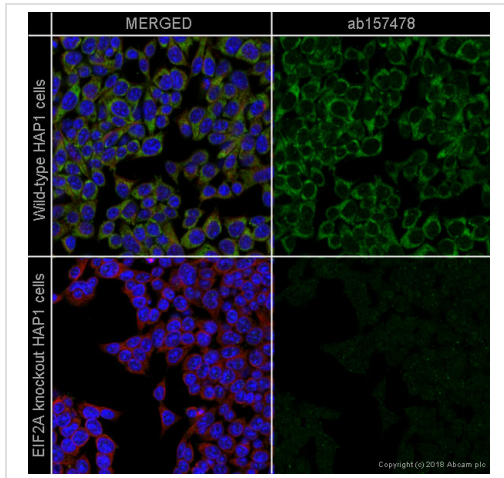
## 画像



**Lane 1:** Wild-type HAP1 cell lysate (20 µg)  
**Lane 2:** eIF2A knockout HAP1 cell lysate (20 µg)  
**Lane 3:** U87-MG cell lysate (20 µg)  
**Lane 4:** MOLT4 cell lysate (20 µg)  
**Lanes 1 - 4:** Merged signal (red and green). Green - ab157478 observed at 65 kDa. Red - loading control, **ab8245**, observed at 37 kDa.

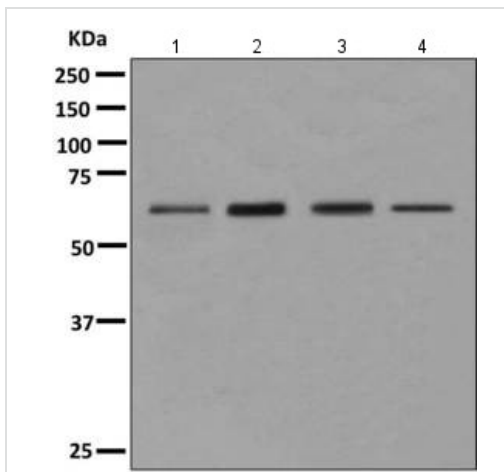
ab157478 was shown to recognize eIF2A when eIF2A knockout samples were used, along with additional cross-reactive bands. Wild-type and eIF2A knockout samples were subjected to SDS-PAGE. ab157478 and **ab8245** (loading control to GAPDH) were diluted at 1/500 and 1/10000 respectively and incubated overnight at 4°C. Blots were developed with Goat anti-Rabbit IgG H&L (IRDye® 800CW) preadsorbed **ab216773** and Goat anti-Mouse

IgG H&L (IRDye® 680RD) preadsorbed **ab216776** secondary antibodies at 1/10000 dilution for 1 h at room temperature before imaging.



Immunocytochemistry/ Immunofluorescence - Anti-eIF2A antibody [EPR11041] (ab157478)

ab157478 staining eIF2A in wild-type HAP1 cells (top panel) and EIF2A knockout HAP1 cells (bottom panel). The cells were fixed with 100% methanol for 5 minutes, permeabilized with 0.1% Triton X-100 for 5 minutes and then blocked with 1% BSA/10% normal goat serum/0.3M glycine in 0.1% PBS-Tween for 1 hour. The cells were then incubated with ab157478 at 1µg/ml and **ab195889** at 1/250 dilution (shown in pseudo colour red) overnight at +4°C, followed by a further incubation at room temperature for 1 hour with Goat Anti-Rabbit IgG H&L (Alexa Fluor® 488) preadsorbed (ab150081) secondary antibody at 2 µg/ml (shown in green). Nuclear DNA was labelled in blue with DAPI.



Western blot - Anti-eIF2A antibody [EPR11041] (ab157478)

**All lanes :** Anti-eIF2A antibody [EPR11041] (ab157478) at 1/1000 dilution

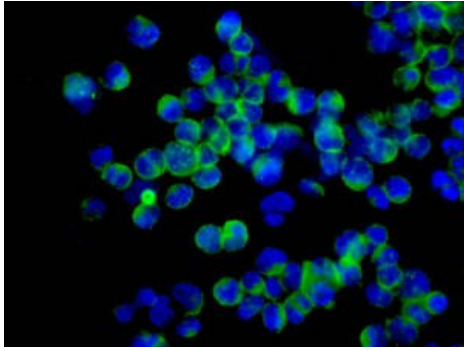
**Lane 1 :** Ramos cell lysate  
**Lane 2 :** MOLT4 cell lysate  
**Lane 3 :** U87-MG cell lysate  
**Lane 4 :** Raji cell lysate

Lysates/proteins at 10 µg per lane.

### Secondary

**All lanes :** HRP labelled goat anti-rabbit at 1/2000 dilution

**Predicted band size:** 65 kDa



Immunofluorescent analysis of Raji cells labeling eIF2A with ab157478 at 1/100 dilution.

Immunocytochemistry/ Immunofluorescence - Anti-eIF2A antibody [EPR11041] (ab157478)

Why choose a recombinant antibody?



**Research with confidence**  
Consistent and reproducible results



**Long-term and scalable supply**  
Recombinant technology



**Success from the first experiment**  
Confirmed specificity



**Ethical standards compliant**  
Animal-free production

Anti-eIF2A antibody [EPR11041] (ab157478)

**Please note:** All products are "FOR RESEARCH USE ONLY. NOT FOR USE IN DIAGNOSTIC PROCEDURES"

### Our Abpromise to you: Quality guaranteed and expert technical support

- Replacement or refund for products not performing as stated on the datasheet
- Valid for 12 months from date of delivery
- Response to your inquiry within 24 hours
- We provide support in Chinese, English, French, German, Japanese and Spanish
- Extensive multi-media technical resources to help you
- We investigate all quality concerns to ensure our products perform to the highest standards

If the product does not perform as described on this datasheet, we will offer a refund or replacement. For full details of the Abpromise, please visit <https://www.abcam.co.jp/abpromise> or contact our technical team.

### Terms and conditions

- Guarantee only valid for products bought direct from Abcam or one of our authorized distributors