

# Anti-eIF1A antibody [EPR12466(B)] ab177939

リコンビナント **RabMAb**

**6 References**   [画像数 11](#)

### 製品の概要

製品名	Anti-eIF1A antibody [EPR12466(B)]
製品の詳細	Rabbit monoclonal [EPR12466(B)] to eIF1A
由来種	Rabbit
特異性	The mouse and rat recommendation is based on the WB results. We do not guarantee IHC-P for mouse and rat.
アプリケーション	<b>適用あり:</b> Flow Cyt (Intra), WB, ICC/IF, IHC-P, IP
種交差性	<b>交差種:</b> Mouse, Rat, Human
免疫原	Synthetic peptide. This information is proprietary to Abcam and/or its suppliers.
ポジティブ・コントロール	WB: HeLa, Jurkat, A375 and 293T cell lysates, mouse and rat brain tissue lysates; IHC-P: Human endometrial carcinoma tissue; Human kidney tissue; ICC/IF: HeLa and 293T cells. Flow Cyt (intra): HeLa cells IP: HeLa cells
特記事項	<p>This product is a recombinant monoclonal antibody, which offers several advantages including:</p> <ul style="list-style-type: none"> <li>- High batch-to-batch consistency and reproducibility</li> <li>- Improved sensitivity and specificity</li> <li>- Long-term security of supply</li> <li>- Animal-free production</li> </ul> <p>For more information <a href="#">see here</a>.</p> <p>Our RabMAb<sup>®</sup> technology is a patented hybridoma-based technology for making rabbit monoclonal antibodies. For details on our patents, please refer to <a href="#">RabMAb<sup>®</sup> patents</a>.</p>

### 製品の特性

製品の状態	Liquid
保存方法	Shipped at 4°C. Store at +4°C short term (1-2 weeks). Upon delivery aliquot. Store at -20°C long term. Avoid freeze / thaw cycle.
バッファー	<p>Preservative: 0.01% Sodium azide</p> <p>Constituents: 59% PBS, 40% Glycerol (glycerin, glycerine), 0.05% BSA</p>
精製度	Protein A purified
ポリ/モノ	モノクローナル

クローン名	EPR12466(B)
アイソタイプ	IgG

#### アプリケーション

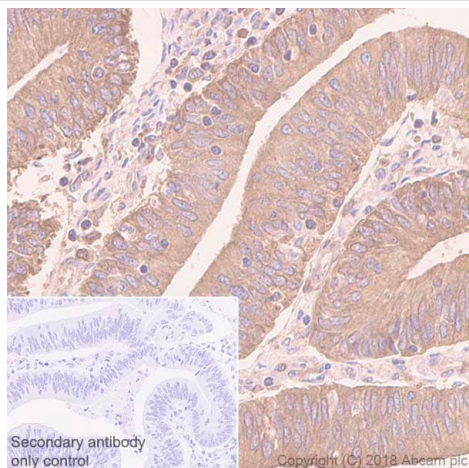
**The Abpromise guarantee**      **Abpromise保証は、** 次のテスト済みアプリケーションにおけるab177939の使用に適用されます  
アプリケーションノートには、推奨の開始希釈率がありますが、適切な希釈率につきましてはご検討ください。

アプリケーション	Abreviews	特記事項
Flow Cyt (Intra)		1/60.
WB		1/10000 - 1/50000. Detects a band of approximately 16 kDa (predicted molecular weight: 16 kDa). The mouse and rat recommendation is based on the WB results. We do not guarantee IHC-P for mouse and rat.
ICC/IF		1/50 - 1/100.
IHC-P		1/350. Perform heat mediated antigen retrieval before commencing with IHC staining protocol. See <b><u>IHC antigen retrieval protocols.</u></b> <b>For unpurified use at 1/50 - 1/100.</b>
IP		1/10 - 1/100.

#### ターゲット情報

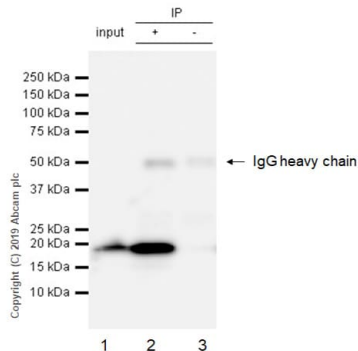
<b>関連性</b>	eIF1A is an essential eukaryotic translation initiation factor. The protein is required for the binding of the 43S complex (a 40S subunit, eIF2/GTP/Met-tRNAi and eIF3) to the 5' end of capped RNA (referenced from entrez gene).
<b>細胞内局在</b>	Cytoplasmic and Nuclear

#### 画像



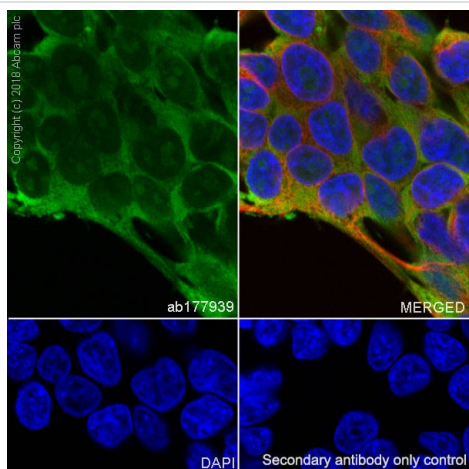
Immunohistochemistry (Formalin/PFA-fixed paraffin-embedded sections) - Anti-eIF1A antibody  
[EPR12466(B)] (ab177939)

Immunohistochemistry (Formalin/PFA-fixed paraffin-embedded sections) analysis of Human endometrium cancer tissue sections labeling eIF1A with Purified ab177939 at 1:350 dilution (1.61 µg/ml). Heat mediated antigen retrieval was performed using Citrate buffer, pH 6.0. ImmunoHistoProbe one step HRP Polymer (ready to use) was used as the secondary antibody. Negative control: PBS instead of the primary antibody. Hematoxylin was used as a counterstain.



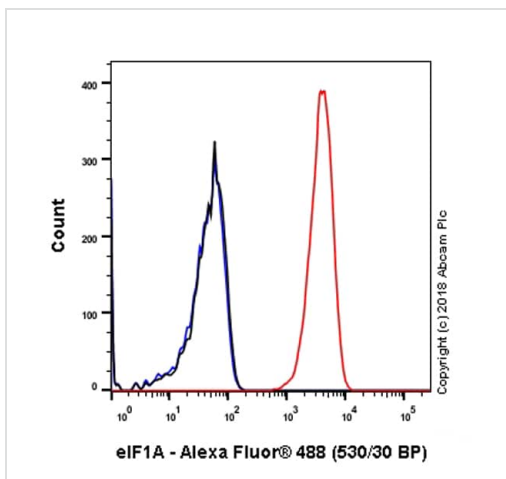
Immunoprecipitation - Anti-eIF1A antibody  
[EPR12466(B)] (ab177939)

ab177939 (purified) at 1:30 dilution (2 µg) immunoprecipitating eIF1A in HeLa whole cell lysate.  
Lane 1 (input): HeLa (Human cervix adenocarcinoma epithelial cell) whole cell lysate 10 µg  
Lane 2 (+): ab177939 & HeLa whole cell lysate  
Lane 3 (-): Rabbit monoclonal IgG (**ab172730**) instead of ab177939 in HeLa whole cell lysate  
For western blotting, VeriBlot for IP Detection Reagent (HRP) (**ab131366**) was used for detection at 1:1000 dilution.  
Blocking and diluting buffer: 5% NFDM/TBST.

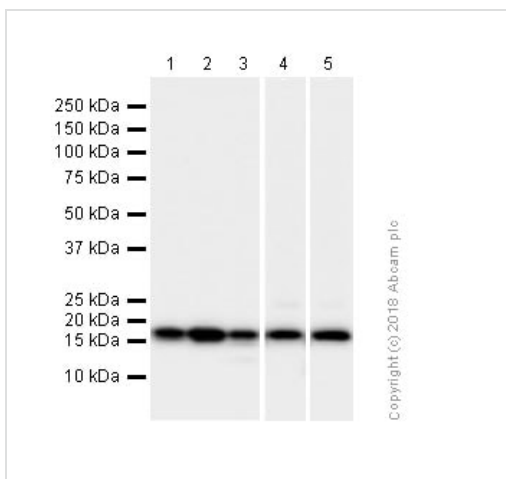


Immunocytochemistry/ Immunofluorescence - Anti-eIF1A antibody [EPR12466(B)] (ab177939)

Immunocytochemistry/ Immunofluorescence analysis of 293T (Human embryonic kidney epithelial cell) cells labeling eIF1A with Purified ab177939 at 1:100 dilution (5.7 µg/ml). Cells were fixed in 4% Paraformaldehyde and permeabilized with 0.1% tritonX-100. Cells were counterstained with Ab195889 Anti-alpha Tubulin antibody [DM1A] - Microtubule Marker (Alexa Fluor® 594) 1:200 (2.5 µg/ml). Goat anti rabbit IgG (Alexa Fluor® 488, **ab150077**) was used as the secondary antibody at 1:1000 (2 µg/ml) dilution. DAPI nuclear counterstain. PBS instead of the primary antibody was used as the secondary antibody only control.



Flow Cytometry (Intracellular) - Anti-eIF1A antibody  
[EPR12466(B)] (ab177939)



Western blot - Anti-eIF1A antibody [EPR12466(B)]  
(ab177939)

Intracellular Flow Cytometry analysis of HeLa (Human cervix adenocarcinoma epithelial cell) cells labeling eIF1A with Purified ab177939 at 1/60 dilution (10µg/ml) (red). Cells were fixed with 4% Paraformaldehyde. A Goat anti rabbit IgG (Alexa Fluor® 488, **ab150077**) secondary antibody was used at 1/2000. Isotype control - Rabbit monoclonal IgG (Black). Unlabeled control - Cell without incubation with primary antibody and secondary antibody (Blue).

**All lanes** : Anti-eIF1A antibody [EPR12466(B)] (ab177939) at 1/10000 dilution (Purified)

**Lane 1** : HeLa (Human cervix adenocarcinoma epithelial cell) whole cell lysates

**Lane 2** : HEK-293 (Human epithelial cell line from embryonic kidney) whole cell lysates

**Lane 3** : Jurkat (Human T cell leukemia T lymphocyte) whole cell lysates

**Lane 4** : Mouse brain lysates

**Lane 5** : Rat brain lysates

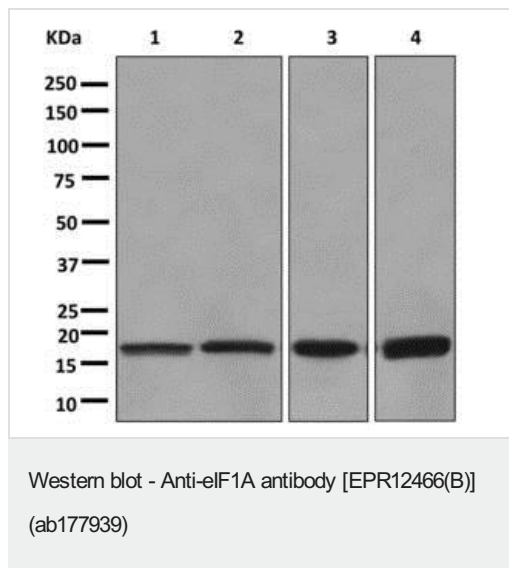
Lysates/proteins at 20 µg per lane.

### Secondary

**All lanes** : Goat Anti-Rabbit IgG H&L (HRP) (**ab97051**) at 1/20000 dilution

**Predicted band size:** 16 kDa

**Observed band size:** 16 kDa



**All lanes :** Anti-eIF1A antibody [EPR12466(B)] (ab177939) at 1/10000 dilution

**Lane 1 :** HeLa cell lysate

**Lane 2 :** Jurkat cell lysate

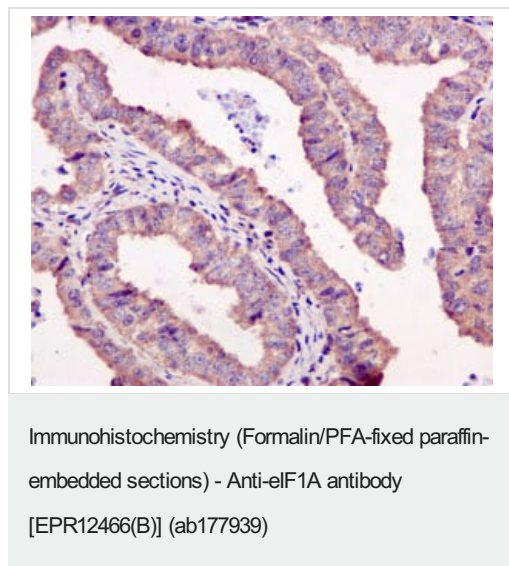
**Lane 3 :** A375 cell lysate

**Lane 4 :** 293T cell lysate

Lysates/proteins at 10 µg per lane.

**Predicted band size:** 16 kDa

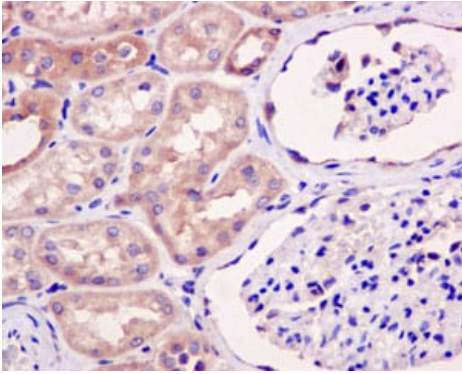
**This image was generated using the unpurified version of the product.**



Immunohistochemical analysis of paraffin-embedded Human endometrial carcinoma tissue labeling EIF1AX with ab177939 at 1/50 dilution.

**This image was generated using the unpurified version of the product.**

**Heat mediated antigen retrieval was performed before commencing with IHC staining protocol.**

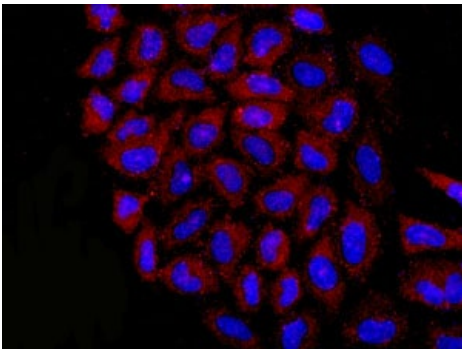


Immunohistochemistry (Formalin/PFA-fixed paraffin-embedded sections) - Anti-eIF1A antibody [EPR12466(B)] (ab177939)

Immunohistochemical analysis of paraffin-embedded Human kidney tissue labeling EIF1AX with ab177939 at 1/50 dilution.

**This image was generated using the unpurified version of the product.**

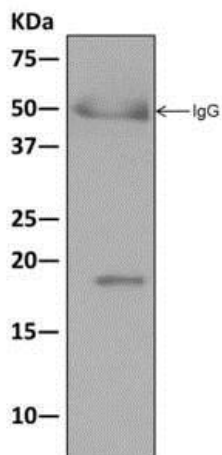
**Heat mediated antigen retrieval was performed before commencing with IHC staining protocol.**



Immunocytochemistry/ Immunofluorescence - Anti-eIF1A antibody [EPR12466(B)] (ab177939)

Immunofluorescent analysis of HeLa cells labeling EIF1AX with ab177939 at 1/50 dilution (red). DAPI nuclear staining (blue).

**This image was generated using the unpurified version of the product.**



Western blot analysis on immunoprecipitation pellet from A375 cell lysate immunoprecipitated using ab177939 at 1/10 dilution.

**This image was generated using the unpurified version of the product.**

Immunoprecipitation - Anti-eIF1A antibody  
[EPR12466(B)] (ab177939)

Why choose a  
recombinant antibody?



**Research with  
confidence**  
Consistent and  
reproducible results



**Long-term and  
scalable supply**  
Recombinant  
technology



**Success from the  
first experiment**  
Confirmed  
specificity



**Ethical standards  
compliant**  
Animal-free  
production

Anti-eIF1A antibody [EPR12466(B)] (ab177939)

**Please note:** All products are "FOR RESEARCH USE ONLY. NOT FOR USE IN DIAGNOSTIC PROCEDURES"

### Our Abpromise to you: Quality guaranteed and expert technical support

- Replacement or refund for products not performing as stated on the datasheet
- Valid for 12 months from date of delivery
- Response to your inquiry within 24 hours
- We provide support in Chinese, English, French, German, Japanese and Spanish
- Extensive multi-media technical resources to help you
- We investigate all quality concerns to ensure our products perform to the highest standards

If the product does not perform as described on this datasheet, we will offer a refund or replacement. For full details of the Abpromise, please visit <https://www.abcam.co.jp/abpromise> or contact our technical team.

## Terms and conditions

---

- Guarantee only valid for products bought direct from Abcam or one of our authorized distributors