


Anti-eIF-6 antibody [EPR6512(B)] ab124839

リコンビナント RabMAb

画像数 3

製品の概要

製品名	Anti-eIF-6 antibody [EPR6512(B)]
製品の詳細	Rabbit monoclonal [EPR6512(B)] to eIF-6
由来種	Rabbit
アプリケーション	適用あり: WB, IHC-P 適用なし: ICC/IF or IP
種交差性	交差種: Mouse, Human 交差が予測される動物種: Rat 
免疫原	Synthetic peptide. This information is proprietary to Abcam and/or its suppliers.
ポジティブ・コントロール	HeLa, RAW 264.7, K562, 293T, and HepG2 cell lysates and Human colonic adenocarcinoma tissue.
特記事項	<p>This product is a recombinant monoclonal antibody, which offers several advantages including:</p> <ul style="list-style-type: none"> - High batch-to-batch consistency and reproducibility - Improved sensitivity and specificity - Long-term security of supply - Animal-free production <p>For more information see here.</p> <p>Our RabMAb[®] technology is a patented hybridoma-based technology for making rabbit monoclonal antibodies. For details on our patents, please refer to RabMAb[®] patents.</p>

製品の特性

製品の状態	Liquid
保存方法	Shipped at 4°C. Store at -20°C. Stable for 12 months at -20°C.
バッファー	pH: 7.20 Preservative: 0.05% Sodium azide Constituents: 40% Glycerol (glycerin, glycerine), 9.85% Tris glycine, 50% Tissue culture supernatant
精製度	Protein A purified
特記事項 (精製)	Not purified; provided in cell supernatant and storage buffer.

ポリ/モノ	モノクローナル
クローン名	EPR6512(B)
アイソタイプ	IgG

アプリケーション

The Abpromise guarantee **Abpromise保証は、次のテスト済みアプリケーションにおけるab124839の使用に適用されます**
 アプリケーションノートには、推奨の開始希釈率がありますが、適切な希釈率につきましてはご検討ください。

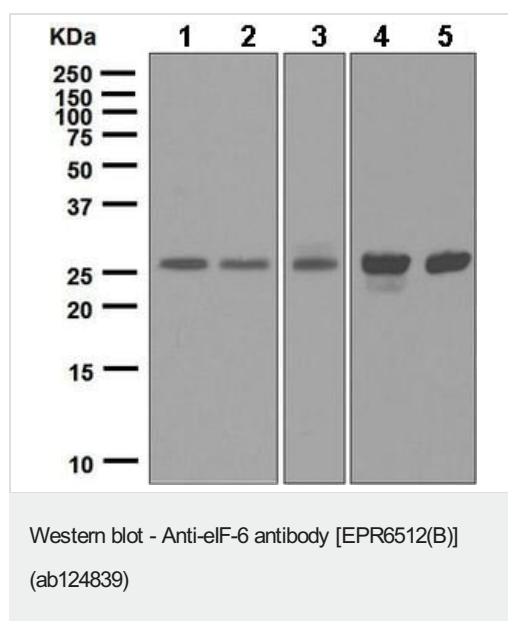
アプリケーション	Abreviews	特記事項
WB		1/1000 - 1/10000. Predicted molecular weight: 27 kDa.
IHC-P		1/100 - 1/250. Perform heat mediated antigen retrieval with citrate buffer pH 6 before commencing with IHC staining protocol. Antigen retrieval is recommended.

追加情報 Is unsuitable for ICC/IF or IP.

ターゲット情報

機能	Binds to the 60S ribosomal subunit and prevents its association with the 40S ribosomal subunit to form the 80S initiation complex in the cytoplasm. May behave as a stimulatory translation initiation factor downstream insulin/growth factors. Is also involved in ribosome biogenesis. Associates with pre-60S subunits in the nucleus and is involved in its nuclear export. Cytoplasmic release of TIF6 from 60S subunits and nuclear relocalization is promoted by a RACK1 (GNB2L1)-dependent protein kinase C activity.
組織特異性	Expressed at very high levels in colon carcinoma with lower levels in normal colon and ileum and lowest levels in kidney and muscle (at protein level).
配列類似性	Belongs to the eIF-6 family.
翻訳後修飾	Phosphorylation at Ser-174 and Ser-175 promotes nuclear export.
細胞内局在	Cytoplasm. Nucleus > nucleolus. Shuttles between cytoplasm and nucleus/nucleolus.

画像



All lanes : Anti-eIF-6 antibody [EPR6512(B)] (ab124839) at 1/1000 dilution

Lane 1 : HeLa cell lysate

Lane 2 : RAW 264.7 cell lysate

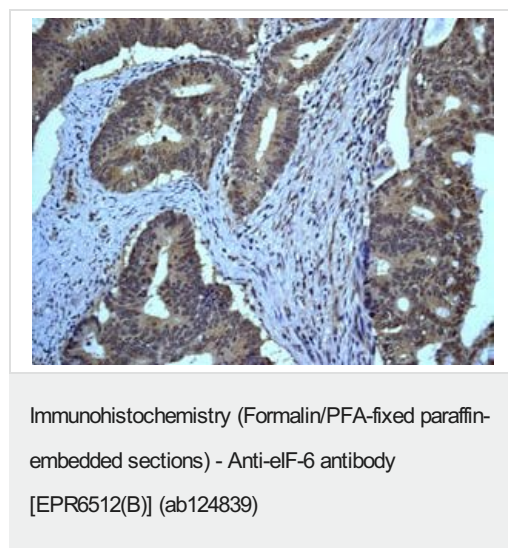
Lane 3 : K562 cell lysate

Lane 4 : 293T cell lysate

Lane 5 : HepG2 cell lysate

Lysates/proteins at 10 µg per lane.

Predicted band size: 27 kDa



ab124839, at 1/100 to 1/250, staining eIF-6 in Human colonic adenocarcinoma by immunohistochemistry [Paraffin Embedded Tissues (IHC-P)].

Perform heat mediated antigen retrieval with citrate buffer pH 6 before commencing with IHC staining protocol.

Why choose a recombinant antibody?



Research with confidence
Consistent and reproducible results



Long-term and scalable supply
Recombinant technology



Success from the first experiment
Confirmed specificity



Ethical standards compliant
Animal-free production

Anti-eIF-6 antibody [EPR6512(B)] (ab124839)

Please note: All products are "FOR RESEARCH USE ONLY. NOT FOR USE IN DIAGNOSTIC PROCEDURES"

Our Abpromise to you: Quality guaranteed and expert technical support

- Replacement or refund for products not performing as stated on the datasheet
- Valid for 12 months from date of delivery
- Response to your inquiry within 24 hours
- We provide support in Chinese, English, French, German, Japanese and Spanish
- Extensive multi-media technical resources to help you
- We investigate all quality concerns to ensure our products perform to the highest standards

If the product does not perform as described on this datasheet, we will offer a refund or replacement. For full details of the Abpromise, please visit <https://www.abcam.co.jp/abpromise> or contact our technical team.

Terms and conditions

- Guarantee only valid for products bought direct from Abcam or one of our authorized distributors