

Anti-EHD1 antibody [EPR4954] ab109311

リコンビナント RabMAb[®]

★★★★☆ **1 Abreviews** **19 References** 画像数 10

製品の概要

製品名	Anti-EHD1 antibody [EPR4954]
製品の詳細	Rabbit monoclonal [EPR4954] to EHD1
由来種	Rabbit
アプリケーション	適用あり: WB, IP, IHC-P
種交差性	交差種: Mouse, Rat, Human
免疫原	Synthetic peptide. This information is proprietary to Abcam and/or its suppliers.
ポジティブ・コントロール	WB: HepG2, Human testis, SW480, SK-OV-3, Human brain, HeLa, Mouse brain, and Rat brain lysates. IHC-P: human thyroid carcinoma, kidney and tonsil, mouse lung, and rat lung tissues. IP: HeLa cells.
特記事項	<p>This product is a recombinant monoclonal antibody, which offers several advantages including:</p> <ul style="list-style-type: none">- High batch-to-batch consistency and reproducibility- Improved sensitivity and specificity- Long-term security of supply- Animal-free production <p>For more information see here.</p> <p>Our RabMAb[®] technology is a patented hybridoma-based technology for making rabbit monoclonal antibodies. For details on our patents, please refer to RabMAb[®] patents.</p>

製品の特性

製品の状態	Liquid
保存方法	Shipped at 4°C. Store at +4°C short term (1-2 weeks). Upon delivery aliquot. Store at -20°C. Stable for 12 months at -20°C.
バッファー	pH: 7.20 Preservative: 0.01% Sodium azide Constituents: PBS, 40% Glycerol, 0.05% BSA
精製度	Protein A purified
ポリ/モノ	モノクローナル
クローン名	EPR4954

アプリケーション

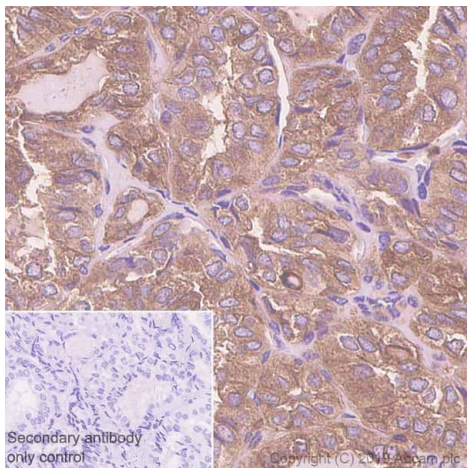
The Abpromise guarantee **Abpromise保証は、次のテスト済みアプリケーションにおけるab109311の使用に適用されず**
 アプリケーションノートには、推奨の開始希釈率がありますが、適切な希釈率につきましてはご検討ください。

アプリケーション	Abreviews	特記事項
WB	★★★★☆ (1)	1/1000 - 1/10000. Detects a band of approximately 60 kDa (predicted molecular weight: 61 kDa).
IP		1/10 - 1/100.
IHC-P		Use at an assay dependent concentration. Perform heat mediated antigen retrieval before commencing with IHC staining protocol. (heat to 98°C, allow to cool for 10-20 minutes) 1:120 in human tissues / 1:1600 in mouse and rat tissues See <u>IHC antigen retrieval protocols.</u>

ターゲット情報

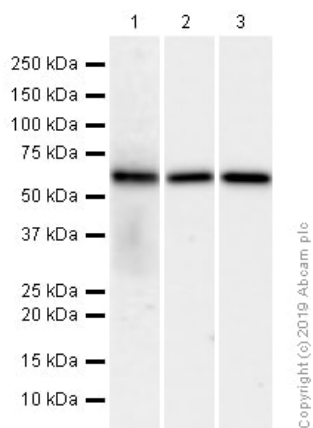
機能	Acts in early endocytic membrane fusion and membrane trafficking of recycling endosomes.
組織特異性	Highly expressed in testis.
配列類似性	Contains 1 EF-hand domain. Contains 1 EH domain.
ドメイン	The EH domain interacts with Asn-Pro-Phe (NPF) motifs of target proteins.
細胞内局在	Cell membrane. Early endosome membrane. Recycling endosome membrane. Associated with intracellular tubulovesicular structures.

画像



Immunohistochemistry (Formalin/PFA-fixed paraffin-embedded sections) - Anti-EHD1 antibody [EPR4954] (ab109311)

Immunohistochemistry (Formalin/PFA-fixed paraffin-embedded sections) analysis of human thyroid carcinoma tissue sections labeling EHD1 with purified ab109311 at 1/120 dilution (2.85 µg/ml). Heat mediated antigen retrieval using Bond™ Epitope Retrieval Solution 2 (pH 9.0). Rabbit specific IHC polymer detection kit HRP/DAB (**ab209101**) was used as the secondary antibody. Negative control: PBS instead of the primary antibody. Hematoxylin was used as a counterstain.



Western blot - Anti-EHD1 antibody [EPR4954] (ab109311)

All lanes : Anti-EHD1 antibody [EPR4954] (ab109311) at 1/10000 dilution (Purified)

Lane 1 : HeLa (Human cervix adenocarcinoma epithelial cell) whole cell lysates

Lane 2 : Mouse brain lysates

Lane 3 : Rat brain lysates

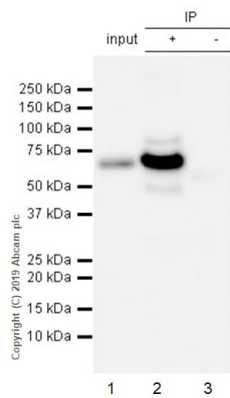
Lysates/proteins at 15 µg per lane.

Secondary

All lanes : Goat Anti-Rabbit IgG H&L (HRP) (**ab97051**) at 1/20000 dilution

Predicted band size: 61 kDa

Observed band size: 60 kDa



Immunoprecipitation - Anti-EHD1 antibody
[EPR4954] (ab109311)

ab109311 (purified) at 1/30 dilution (2ug) immunoprecipitating EHD1 in HeLa whole cell lysate.

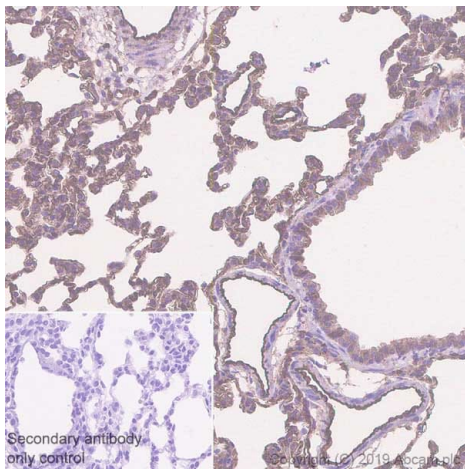
Lane 1 (input): HeLa (Human cervix adenocarcinoma epithelial cell) whole cell lysate 10ug

Lane 2 (+): ab109311 & HeLa whole cell lysate

Lane 3 (-): Rabbit monoclonal IgG (**ab172730**) instead of ab109311 in HeLa whole cell lysate

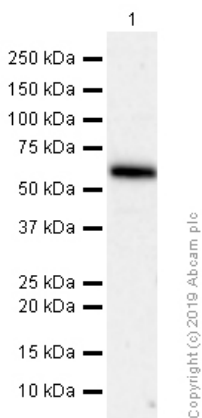
For western blotting, VeriBlot for IP Detection Reagent (HRP) (**ab131366**) was used at 1/1000 dilution.

Blocking and diluting buffer: 5% NFDm/TBST.



Immunohistochemistry (Formalin/PFA-fixed paraffin-embedded sections) - Anti-EHD1 antibody
[EPR4954] (ab109311)

Immunohistochemistry (Formalin/PFA-fixed paraffin-embedded sections) analysis of rat lung tissue sections labeling EHD1 with purified ab109311 at 1/1600 dilution (0.21 µg/ml). Heat mediated antigen retrieval using Bond™ Epitope Retrieval Solution 2 (pH 9.0). Rabbit specific IHC polymer detection kit HRP/DAB (**ab209101**) was used as the secondary antibody. Negative control: PBS instead of the primary antibody. Hematoxylin was used as a counterstain.



Western blot - Anti-EHD1 antibody [EPR4954]
(ab109311)

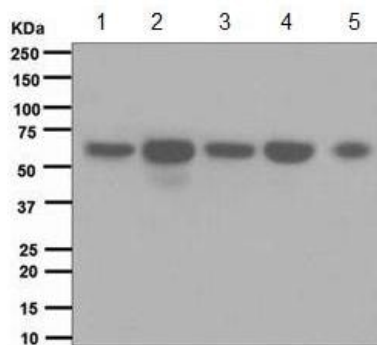
Anti-EHD1 antibody [EPR4954] (ab109311) at 1/10000 dilution (Purified) + Human brain lysates at 15 µg

Secondary

Goat Anti-Rabbit IgG (HRP) with minimal cross-reactivity with human IgG at 1/2000 dilution

Predicted band size: 61 kDa

Observed band size: 60 kDa



Western blot - Anti-EHD1 antibody [EPR4954] (ab109311)

All lanes : Anti-EHD1 antibody [EPR4954] (ab109311) at 1/1000 dilution ((unpurified))

Lane 1 : HepG2 cell lysates

Lane 2 : Human testis lysates

Lane 3 : SW480 cell lysates

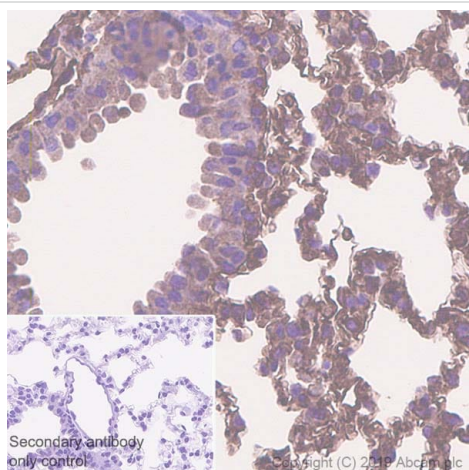
Lane 4 : SK-OV-3 cell lysates

Lane 5 : HeLa cell lysates

Lysates/proteins at 10 µg per lane.

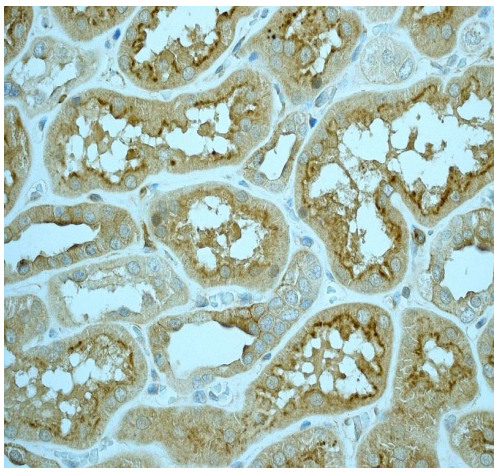
Predicted band size: 61 kDa

Observed band size: 60 kDa



Immunohistochemistry (Formalin/PFA-fixed paraffin-embedded sections) - Anti-EHD1 antibody [EPR4954] (ab109311)

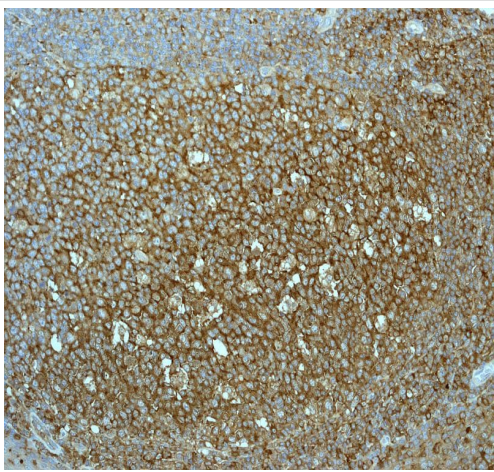
Immunohistochemistry (Formalin/PFA-fixed paraffin-embedded sections) analysis of mouse lung tissue sections labeling EHD1 with purified ab109311 at 1/1600 dilution (0.21 µg/ml). Heat mediated antigen retrieval using Bond™ Epitope Retrieval Solution 2 (pH 9.0). Rabbit specific IHC polymer detection kit HRP/DAB (**ab209101**) was used as the secondary antibody. Negative control: PBS instead of the primary antibody. Hematoxylin was used as a counterstain.



Immunohistochemistry (Formalin/PFA-fixed paraffin-embedded sections) - Anti-EHD1 antibody [EPR4954] (ab109311)

Immunohistochemical analysis of EHD1 in paraffin embedded Human kidney tissue, using unpurified ab109311 at a 1/100 dilution.

Perform heat mediated antigen retrieval before commencing with IHC staining protocol.



Immunohistochemistry (Formalin/PFA-fixed paraffin-embedded sections) - Anti-EHD1 antibody [EPR4954] (ab109311)

Immunohistochemical analysis of EHD1 in paraffin embedded Human tonsil tissue, using unpurified ab109311 at a 1/100 dilution.

Perform heat mediated antigen retrieval before commencing with IHC staining protocol.

Why choose a recombinant antibody?

- 

Research with confidence
Consistent and reproducible results
- 

Long-term and scalable supply
Recombinant technology
- 

Success from the first experiment
Confirmed specificity
- 

Ethical standards compliant
Animal-free production

Anti-EHD1 antibody [EPR4954] (ab109311)

Please note: All products are "FOR RESEARCH USE ONLY. NOT FOR USE IN DIAGNOSTIC PROCEDURES"

Our Abpromise to you: Quality guaranteed and expert technical support

- Replacement or refund for products not performing as stated on the datasheet
- Valid for 12 months from date of delivery
- Response to your inquiry within 24 hours
- We provide support in Chinese, English, French, German, Japanese and Spanish
- Extensive multi-media technical resources to help you
- We investigate all quality concerns to ensure our products perform to the highest standards

If the product does not perform as described on this datasheet, we will offer a refund or replacement. For full details of the Abpromise, please visit <https://www.abcam.co.jp/abpromise> or contact our technical team.

Terms and conditions

- Guarantee only valid for products bought direct from Abcam or one of our authorized distributors