




### Anti-EGR2 antibody ab63943

[1 Abreviews](#) [2 References](#) [画像数 1](#)

#### 製品の概要

<b>製品名</b>	Anti-EGR2 antibody
<b>製品の詳細</b>	Goat polyclonal to EGR2
<b>由来種</b>	Goat
<b>アプリケーション</b>	<b>適用あり:</b> WB, IHC-P
<b>種交差性</b>	<b>交差種:</b> Human <b>交差が予測される動物種:</b> Mouse, Rat, Dog, Pig 
<b>免疫原</b>	Synthetic peptide corresponding to Human EGR2 aa 239-251 (internal sequence). Sequence: HGTAGPDRKPFPC <div style="text-align: right;">  <a href="#">Run BLAST with</a>                 <a href="#">Run BLAST with</a> </div>
<b>ポジティブ・コントロール</b>	WB: HepG2 whole cell lysate ( <a href="#">ab7900</a> ).
<b>特記事項</b>	<p>The Life Science industry has been in the grips of a reproducibility crisis for a number of years. Abcam is leading the way in addressing this with our range of recombinant monoclonal antibodies and knockout edited cell lines for gold-standard validation. Please check that this product meets your needs before purchasing.</p> <p>If you have any questions, special requirements or concerns, please send us an inquiry and/or contact our Support team ahead of purchase. Recommended alternatives for this product can be found below, along with publications, customer reviews and Q&amp;As</p>

#### 製品の特性

<b>製品の状態</b>	Liquid
<b>保存方法</b>	Shipped at 4°C. Store at -20°C. Stable for 12 months at -20°C.
<b>バッファー</b>	pH: 7.30 Preservative: 0.02% Sodium azide Constituents: Tris buffered saline, 0.5% BSA
<b>精製度</b>	Immunogen affinity purified
<b>特記事項 (精製)</b>	ab63943 was purified from goat serum by ammonium sulphate precipitation followed by antigen affinity chromatography using the immunizing peptide.
<b>ポリ/モノ</b>	ポリクローナル

## アプリケーション

The Abpromise guarantee **Abpromise保証は、次のテスト済みアプリケーションにおけるab63943の使用に適用されます**

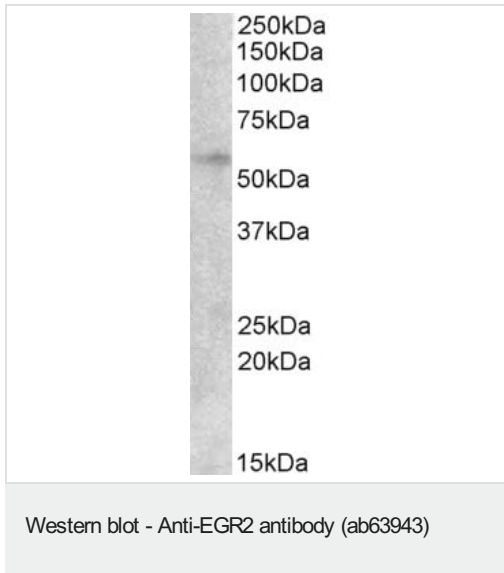
アプリケーションノートには、推奨の開始希釈率がありますが、適切な希釈率につきましてはご検討ください。

アプリケーション	Abreviews	特記事項
WB		Use a concentration of 2 - 6 µg/ml. Detects a band of approximately 53 kDa (predicted molecular weight: 53 kDa). A 1 hour primary incubation is recommended for this product.
IHC-P		Use a concentration of 3 - 5 µg/ml.

## ターゲット情報

機能	Sequence-specific DNA-binding transcription factor. Binds to two specific DNA sites located in the promoter region of HOXA4.
関連疾患	<p>Defects in EGR2 are a cause of congenital hypomyelination neuropathy (CHN) [MIM:605253]. Inheritance can be autosomal dominant or recessive. Recessive CHN is also known as Charcot-Marie-Tooth disease type 4E (CMT4E). CHN is characterized clinically by early onset of hypotonia, areflexia, distal muscle weakness, and very slow nerve conduction velocities.</p> <p>Defects in EGR2 are a cause of Charcot-Marie-Tooth disease type 1D (CMT1D) [MIM:607678]. CMT1D is a form of Charcot-Marie-Tooth disease, the most common inherited disorder of the peripheral nervous system. Charcot-Marie-Tooth disease is classified in two main groups on the basis of electrophysiologic properties and histopathology: primary peripheral demyelinating neuropathy or CMT1, and primary peripheral axonal neuropathy or CMT2. Neuropathies of the CMT1 group are characterized by severely reduced nerve conduction velocities (less than 38 m/sec), segmental demyelination and remyelination with onion bulb formations on nerve biopsy, slowly progressive distal muscle atrophy and weakness, absent deep tendon reflexes, and hollow feet.</p> <p>Defects in EGR2 are a cause of Dejerine-Sottas syndrome (DSS) [MIM:145900]; also known as Dejerine-Sottas neuropathy (DSN) or hereditary motor and sensory neuropathy III (HMSN3). DSS is a severe degenerating neuropathy of the demyelinating Charcot-Marie-Tooth disease category, with onset by age 2 years. DSS is characterized by motor and sensory neuropathy with very slow nerve conduction velocities, increased cerebrospinal fluid protein concentrations, hypertrophic nerve changes, delayed age of walking as well as areflexia. There are both autosomal dominant and autosomal recessive forms of Dejerine-Sottas syndrome.</p>
配列類似性	<p>Belongs to the EGR C2H2-type zinc-finger protein family.</p> <p>Contains 3 C2H2-type zinc fingers.</p>
翻訳後修飾	Ubiquitinated by WWP2 leading to proteasomal degradation.
細胞内局在	Nucleus.

## 画像



Anti-EGR2 antibody (ab63943) at 2 µg/ml + HepG2 cell lysate in RIPA buffer at 35 µg

Developed using the ECL technique.

**Predicted band size:** 53 kDa

Incubated with the primary antibody for 1 hour.

**Please note:** All products are "FOR RESEARCH USE ONLY. NOT FOR USE IN DIAGNOSTIC PROCEDURES"

### Our Abpromise to you: Quality guaranteed and expert technical support

---

- Replacement or refund for products not performing as stated on the datasheet
- Valid for 12 months from date of delivery
- Response to your inquiry within 24 hours
- We provide support in Chinese, English, French, German, Japanese and Spanish
- Extensive multi-media technical resources to help you
- We investigate all quality concerns to ensure our products perform to the highest standards

If the product does not perform as described on this datasheet, we will offer a refund or replacement. For full details of the Abpromise, please visit <https://www.abcam.co.jp/abpromise> or contact our technical team.

### Terms and conditions

---

- Guarantee only valid for products bought direct from Abcam or one of our authorized distributors