

Anti-EGFR (deleted E746 + L747 + R748 + E749 + A750) antibody [SP111] ab227737

リコンビナント **RabMAb**

画像数 5

製品の概要

製品名	Anti-EGFR (deleted E746 + L747 + R748 + E749 + A750) antibody [SP111]
製品の詳細	Rabbit monoclonal [SP111] to EGFR (deleted E746 + L747 + R748 + E749 + A750)
由来種	Rabbit
アプリケーション	適用あり: IHC-P, ICC/IF, Flow Cyt, WB
種交差性	交差種: Human
免疫原	Synthetic peptide. This information is proprietary to Abcam and/or its suppliers.
ポジティブ・コントロール	IHC-P: Human lung carcinoma tissue. WB: HCC827 cell lysate. ICC/IF: HCC827 cells Flow Cyt: HCC827 cells
特記事項	<p>This product is a recombinant monoclonal antibody, which offers several advantages including:</p> <ul style="list-style-type: none"> - High batch-to-batch consistency and reproducibility - Improved sensitivity and specificity - Long-term security of supply - Animal-free production <p>For more information see here.</p> <p>Our RabMAb[®] technology is a patented hybridoma-based technology for making rabbit monoclonal antibodies. For details on our patents, please refer to RabMAb[®] patents.</p> <p>This product is FOR RESEARCH USE ONLY. For commercial use, please contact partnerships@abcam.com.</p>

製品の特性

製品の状態	Liquid
保存方法	Shipped at 4°C. Store at +4°C short term (1-2 weeks). Upon delivery aliquot. Store at -20°C long term. Avoid freeze / thaw cycle.
バッファー	<p>pH: 7.20</p> <p>Preservative: 0.1% Sodium azide</p> <p>Constituents: 1% BSA, PBS</p>
精製度	Protein A purified

ポリ/モノ	モノクローナル
クローン名	SP111
アイソタイプ	IgG

アプリケーション

The Abpromise guarantee **Abpromise保証は、次のテスト済みアプリケーションにおけるab227737の使用に適用されます**
 アプリケーションノートには、推奨の開始希釈率がありますが、適切な希釈率につきましてはご検討ください。

アプリケーション	Abreviews	特記事項
IHC-P		1/100. Perform heat mediated antigen retrieval with EDTA buffer pH 8.0 before commencing with IHC staining protocol. Primary antibody incubation for 30 minutes at room temperature.
ICC/IF		1/1000.
Flow Cyt		1/400.
WB		1/300. Predicted molecular weight: 134 kDa. Primary antibody incubation for 1 hour at room temperature.

ターゲット情報

機能	<p>Receptor tyrosine kinase binding ligands of the EGF family and activating several signaling cascades to convert extracellular cues into appropriate cellular responses. Known ligands include EGF, TGFA/TGF-alpha, amphiregulin, epigen/EPGN, BTC/betacellulin, epiregulin/EREG and HBEGF/heparin-binding EGF. Ligand binding triggers receptor homo- and/or heterodimerization and autophosphorylation on key cytoplasmic residues. The phosphorylated receptor recruits adapter proteins like GRB2 which in turn activates complex downstream signaling cascades. Activates at least 4 major downstream signaling cascades including the RAS-RAF-MEK-ERK, PI3 kinase-AKT, PLCgamma-PKC and STATs modules. May also activate the NF-kappa-B signaling cascade. Also directly phosphorylates other proteins like RGS16, activating its GTPase activity and probably coupling the EGF receptor signaling to the G protein-coupled receptor signaling. Also phosphorylates MUC1 and increases its interaction with SRC and CTNNB1/beta-catenin.</p> <p>Isoform 2 may act as an antagonist of EGF action.</p>
組織特異性	Ubiquitously expressed. Isoform 2 is also expressed in ovarian cancers.
関連疾患	<p>Lung cancer</p> <p>Inflammatory skin and bowel disease, neonatal, 2</p>
配列類似性	<p>Belongs to the protein kinase superfamily. Tyr protein kinase family. EGF receptor subfamily.</p> <p>Contains 1 protein kinase domain.</p>
翻訳後修飾	<p>Phosphorylation at Ser-695 is partial and occurs only if Thr-693 is phosphorylated.</p> <p>Phosphorylation at Thr-678 and Thr-693 by PRKD1 inhibits EGF-induced MAPK8/JNK1 activation. Dephosphorylation by PTPRJ prevents endocytosis and stabilizes the receptor at the plasma membrane. Autophosphorylation at Tyr-1197 is stimulated by methylation at Arg-1199</p>

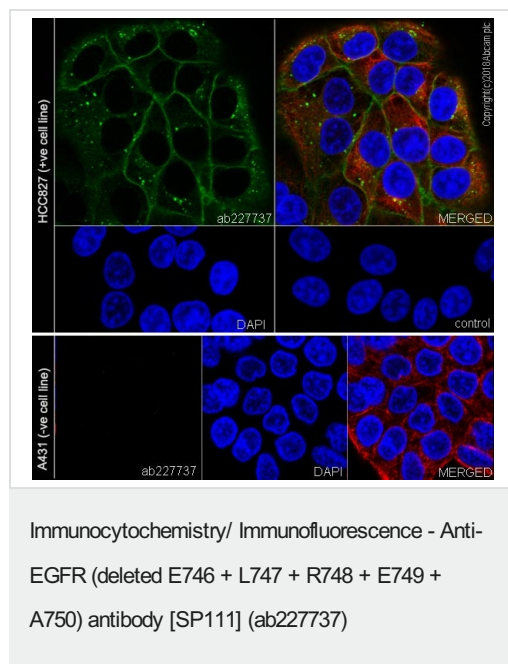
and enhances interaction with PTPN6. Autophosphorylation at Tyr-1092 and/or Tyr-1110 recruits STAT3. Dephosphorylated by PTPN1 and PTPN2.

Monoubiquitinated and polyubiquitinated upon EGF stimulation; which does not affect tyrosine kinase activity or signaling capacity but may play a role in lysosomal targeting. Polyubiquitin linkage is mainly through 'Lys-63', but linkage through 'Lys-48', 'Lys-11' and 'Lys-29' also occurs. Deubiquitination by OTUD7B prevents degradation. Ubiquitinated by RNF115 and RNF126. Methylated. Methylation at Arg-1199 by PRMT5 stimulates phosphorylation at Tyr-1197.

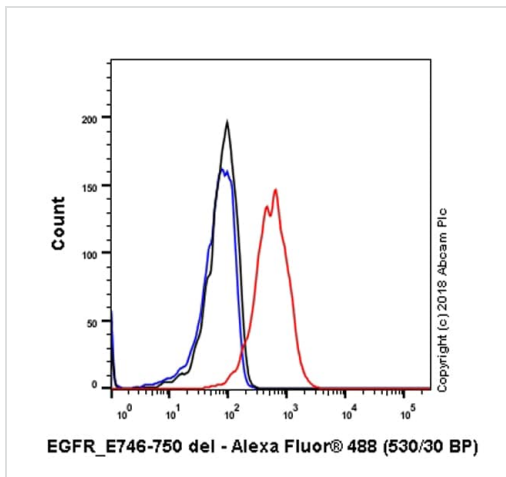
細胞内局在

Secreted and Cell membrane. Endoplasmic reticulum membrane. Golgi apparatus membrane. Nucleus membrane. Endosome. Endosome membrane. Nucleus. In response to EGF, translocated from the cell membrane to the nucleus via Golgi and ER. Endocytosed upon activation by ligand. Colocalized with GPER1 in the nucleus of estrogen agonist-induced cancer-associated fibroblasts (CAF).

画像

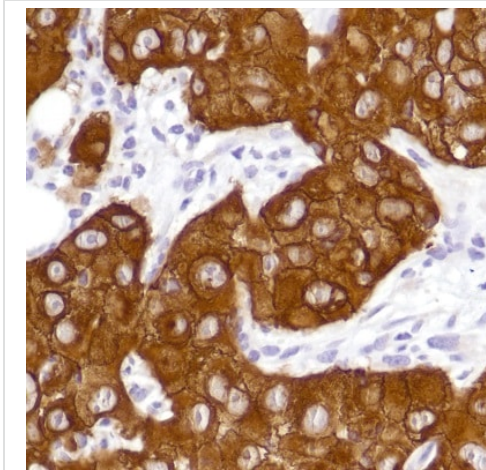


Immunocytochemistry/ Immunofluorescence analysis of HCC827(human lung adenocarcinoma epithelial cell), negative control:
A431(human epidermoid carcinoma epithelial cell) cells labeling EGFR with purified ab227737 at 1:100 (4.1 µg/ml). Cells were fixed in 100% Methanol and permeabilized with None. Cells were counterstained with Ab195889 Anti-alpha Tubulin antibody [DM1A] - Microtubule Marker (Alexa Fluor® 594) 1:200 (2.5 µg/ml). Goat anti rabbit IgG (Alexa Fluor® 488, **ab150077**) was used as the secondary antibody at 1:1000 (2 µg/ml) dilution. DAPI nuclear counterstain. PBS instead of the primary antibody was used as the secondary antibody only control.



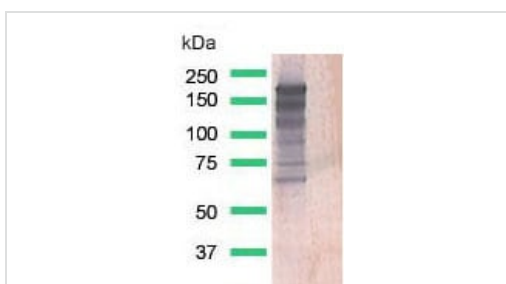
Flow Cytometry - Anti-EGFR (deleted E746 + L747 + R748 + E749 + A750) antibody [SP111] (ab227737)

Flow Cytometry analysis of HCC827(Human lung adenocarcinoma epithelial cell) cells labeling EGFR with purified ab227737 at 1:400 dilution (1.02 µg/ml) Red. Cells were fixed with 4% paraformaldehyde . A Goat anti rabbit IgG (Alexa Fluor® 488, **ab150077**) secondary antibody was used at 1:2000 dilution. Isotype control - Rabbit monoclonal IgG (**ab172730**) / Black. Unlabeled control - Unlabelled cells / Blue.



Immunohistochemistry (Formalin/PFA-fixed paraffin-embedded sections) - Anti-EGFR (deleted E746 + L747 + R748 + E749 + A750) antibody [SP111] (ab227737)

Formalin-fixed, paraffin-embedded human lung carcinoma tissue stained for EGFR (deleted E746 + L747 + R748 + E749 + A750) using ab227737 at 1/100 dilution in immunohistochemical analysis.



Western blot - Anti-EGFR (deleted E746 + L747 + R748 + E749 + A750) antibody [SP111] (ab227737)

Anti-EGFR (deleted E746 + L747 + R748 + E749 + A750) antibody [SP111] (ab227737) at 1/300 dilution + HCC827 cell lysate

Predicted band size: 134 kDa

Why choose a recombinant antibody?



Research with confidence
Consistent and reproducible results



Long-term and scalable supply
Recombinant technology



Success from the first experiment
Confirmed specificity



Ethical standards compliant
Animal-free production

Anti-EGFR (deleted E746 + L747 + R748 + E749 + A750) antibody [SP111] (ab227737)

Please note: All products are "FOR RESEARCH USE ONLY. NOT FOR USE IN DIAGNOSTIC PROCEDURES"

Our Abpromise to you: Quality guaranteed and expert technical support

- Replacement or refund for products not performing as stated on the datasheet
- Valid for 12 months from date of delivery
- Response to your inquiry within 24 hours
- We provide support in Chinese, English, French, German, Japanese and Spanish
- Extensive multi-media technical resources to help you
- We investigate all quality concerns to ensure our products perform to the highest standards

If the product does not perform as described on this datasheet, we will offer a refund or replacement. For full details of the Abpromise, please visit <https://www.abcam.co.jp/abpromise> or contact our technical team.

Terms and conditions

- Guarantee only valid for products bought direct from Abcam or one of our authorized distributors