

Anti-EGF antibody [EPR19173] ab184265

リコンビナント RabMAb[®]

4 References [画像数 7](#)

製品の概要

製品名	Anti-EGF antibody [EPR19173]
製品の詳細	Rabbit monoclonal [EPR19173] to EGF
由来種	Rabbit
アプリケーション	適用あり: IHC-Fr, WB, IHC-P
種交差性	交差種: Mouse, Rat
免疫原	Recombinant fragment. This information is proprietary to Abcam and/or its suppliers.
ポジティブ・コントロール	WB: Mouse and rat kidney lysates; Mouse urine lysate. IHC-P: Mouse and rat kidney tissues. IHC-Fr: Mouse kidney tissue.
特記事項	<p>This product is a recombinant monoclonal antibody, which offers several advantages including:</p> <ul style="list-style-type: none">- High batch-to-batch consistency and reproducibility- Improved sensitivity and specificity- Long-term security of supply- Animal-free production <p>For more information see here.</p> <p>Our RabMAb[®] technology is a patented hybridoma-based technology for making rabbit monoclonal antibodies. For details on our patents, please refer to RabMAb[®] patents.</p>

製品の特性

製品の状態	Liquid
保存方法	Shipped at 4°C. Store at +4°C short term (1-2 weeks). Upon delivery aliquot. Store at -20°C long term. Avoid freeze / thaw cycle.
バッファー	pH: 7.2 Preservative: 0.01% Sodium azide Constituents: 59% PBS, 40% Glycerol (glycerin, glycerine), 0.05% BSA
精製度	Protein A purified
ポリ/モノ	モノクローナル
クローン名	EPR19173
アイソタイプ	IgG

アプリケーション

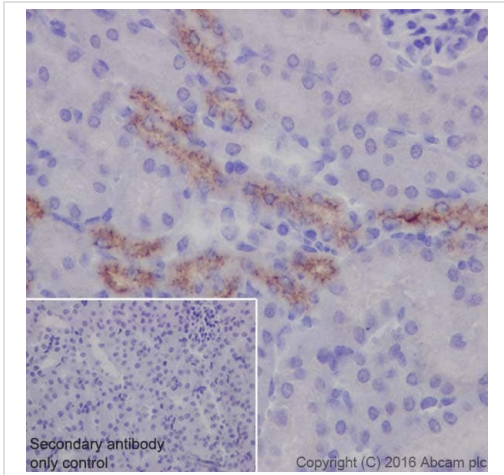
The Abpromise guarantee **Abpromise保証は、次のテスト済みアプリケーションにおけるab184265の使用に適用されず**
アプリケーションノートには、推奨の開始希釈率がありますが、適切な希釈率につきましてはご検討ください。

アプリケーション	Abreviews	特記事項
IHC-Fr		1/500. Antigen retrieval: Heated citrate solution (10mM citrate PH 6.0 + 0.05% Tween-20)
WB		1/1000. Detects a band of approximately 160, 97 ,66 ,56 ,45 ,27 kDa (predicted molecular weight: 133 kDa).
IHC-P		1/1000. Perform heat mediated antigen retrieval with Tris/EDTA buffer pH 9.0 before commencing with IHC staining protocol. (Antigen Retrieval Buffer (100X Tris-EDTA Buffer, pH 9.0) (ab93684))

ターゲット情報

機能	EGF stimulates the growth of various epidermal and epithelial tissues in vivo and in vitro and of some fibroblasts in cell culture. Magnesiotropic hormone that stimulates magnesium reabsorption in the renal distal convoluted tubule via engagement of EGFR and activation of the magnesium channel TRPM6. Can induce neurite outgrowth in motoneurons of the pond snail <i>Lymnaea stagnalis</i> in vitro (PubMed:10964941).
組織特異性	Expressed in kidney, salivary gland, cerebrum and prostate.
関連疾患	Hypomagnesemia 4
配列類似性	Contains 9 EGF-like domains. Contains 9 LDL-receptor class B repeats.
翻訳後修飾	O-glycosylated with core 1-like and core 2-like glycans. It is uncertain if Ser-954 or Thr-955 is O-glycosylated. The modification here shows glycan heterogeneity: HexHexNAc (major) and Hex2HexNAc2 (minor).
細胞内局在	Membrane.

画像

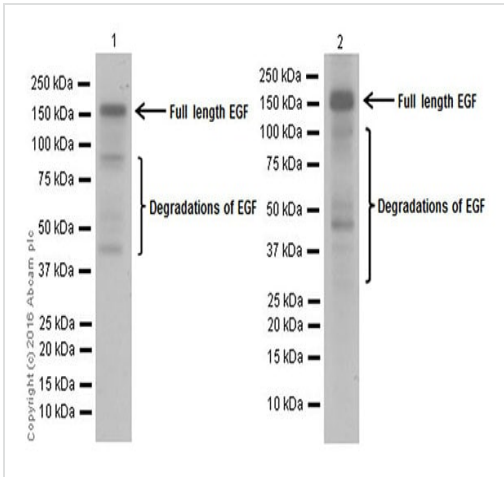


Immunohistochemistry (Formalin/PFA-fixed paraffin-embedded sections) - Anti-EGF antibody [EPR19173] (ab184265)

Immunohistochemical analysis of paraffin-embedded Mouse kidney tissue labeling EGF with ab184265 at 1/1000 dilution, followed by Goat Anti-Rabbit IgG H&L (HRP) (**ab97051**) at 1/500 dilution. Cytoplasm staining on distal convoluted tubules of mouse kidney [PMID 1930151]. Counter stained with Hematoxylin.

Secondary antibody only control: Used PBS instead of primary antibody, secondary antibody is Goat Anti-Rabbit IgG H&L (HRP) (**ab97051**) at 1/500 dilution.

Perform heat mediated antigen retrieval with Tris/EDTA buffer pH 9.0 before commencing with IHC staining protocol.



Western blot - Anti-EGF antibody [EPR19173] (ab184265)

All lanes : Anti-EGF antibody [EPR19173] (ab184265) at 1/1000 dilution

Lane 1 : Mouse kidney lysate

Lane 2 : Rat kidney lysate

Lysates/proteins at 10 µg per lane.

Secondary

All lanes : Goat Anti-Rabbit IgG H&L (HRP) (**ab97051**) at 1/100000 dilution

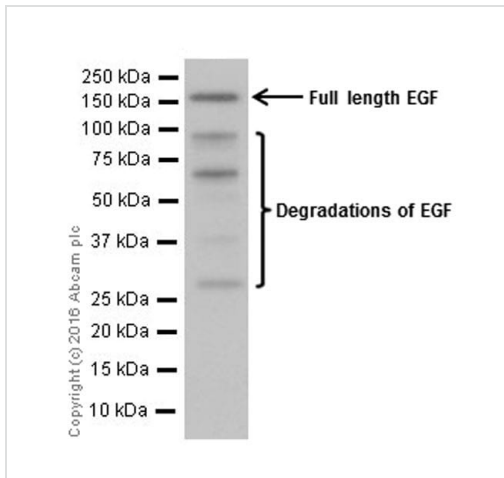
Predicted band size: 133 kDa

Observed band size: 160,45,56,66,97 kDa

Blocking/Dilution buffer: 5% NFDM/TBST.

Exposure time: Lane 1: 10 seconds; Lane 2: 30 seconds.

The molecular weight observed is consistent with what has been described in the literature (PMID:1636692, 2260661, 7499272 & 2260661).



Western blot - Anti-EGF antibody [EPR19173] (ab184265)

Anti-EGF antibody [EPR19173] (ab184265) at 1/5000 dilution +
Mouse urine lysate at 10 µg

Secondary

Goat Anti-Rabbit IgG H&L (HRP) ([ab97051](#)) at 1/100000 dilution

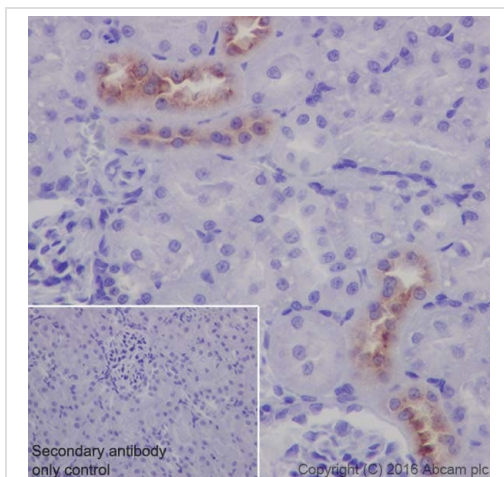
Predicted band size: 133 kDa

Observed band size: 160,27,45,56,66,97 kDa

Exposure time: 3 seconds

Blocking/Dilution buffer: 5% NFDM/TBST.

The molecular weight observed is consistent with what has been described in the literature (PMID:1636692, 2260661, 7499272 & 2260661).

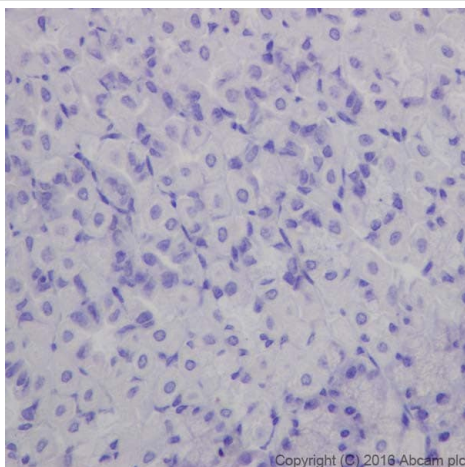


Immunohistochemistry (Formalin/PFA-fixed paraffin-embedded sections) - Anti-EGF antibody [EPR19173] (ab184265)

Immunohistochemical analysis of paraffin-embedded Rat kidney tissue labeling EGF with ab184265 at 1/1000 dilution, followed by Goat Anti-Rabbit IgG H&L (HRP) ([ab97051](#)) at 1/500 dilution. Cytoplasm staining on distal convoluted tubules of rat kidney [PMID 1930151]. Counter stained with Hematoxylin.

Secondary antibody only control: Used PBS instead of primary antibody, secondary antibody is Goat Anti-Rabbit IgG H&L (HRP) ([ab97051](#)) at 1/500 dilution.

Perform heat mediated antigen retrieval with Tris/EDTA buffer pH 9.0 before commencing with IHC staining protocol.



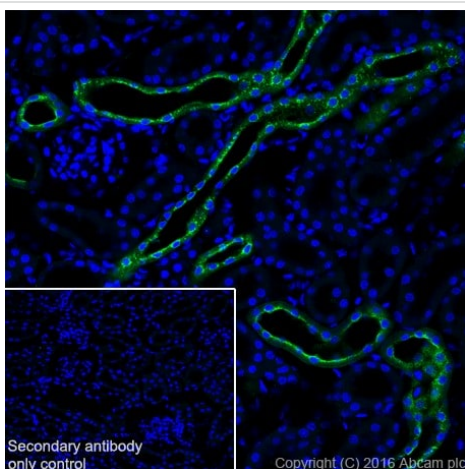
Immunohistochemistry (Formalin/PFA-fixed paraffin-embedded sections) - Anti-EGF antibody [EPR19173] (ab184265)

Immunohistochemical analysis of paraffin-embedded Mouse stomach tissue labeling EGF with ab184265 at 1/1000 dilution, followed by Goat Anti-Rabbit IgG H&L (HRP) ([ab97051](#)) at 1/500 dilution.

No staining on mouse stomach.

Counter stained with Hematoxylin.

Perform heat mediated antigen retrieval with Tris/EDTA buffer pH 9.0 before commencing with IHC staining protocol.



Immunohistochemistry (Frozen sections) - Anti-EGF antibody [EPR19173] (ab184265)


Immunohistochemical analysis of 4% paraformaldehyde-fixed, 0.2% Triton X-100 permeabilized frozen Mouse kidney tissue labeling EGF with ab184265 at 1/500 dilution, followed by Goat anti-rabbit IgG (Alexa Fluor[®] 488) ([ab150077](#)) secondary antibody at 1/1000 dilution (green).

Positive staining on mouse kidney was observed.

The nuclear counterstain is DAPI (blue).

Secondary antibody only control: Used PBS instead of primary antibody, secondary antibody is Goat anti-rabbit IgG (Alexa Fluor[®] 488) ([ab150077](#)) secondary antibody at 1/1000 dilution.

Why choose a recombinant antibody?



Research with confidence
Consistent and reproducible results

Long-term and scalable supply
Recombinant technology

Success from the first experiment
Confirmed specificity

Ethical standards compliant
Animal-free production

Anti-EGF antibody [EPR19173] (ab184265)

Please note: All products are "FOR RESEARCH USE ONLY. NOT FOR USE IN DIAGNOSTIC PROCEDURES"

Our Abpromise to you: Quality guaranteed and expert technical support

- Replacement or refund for products not performing as stated on the datasheet
- Valid for 12 months from date of delivery
- Response to your inquiry within 24 hours
- We provide support in Chinese, English, French, German, Japanese and Spanish
- Extensive multi-media technical resources to help you
- We investigate all quality concerns to ensure our products perform to the highest standards

If the product does not perform as described on this datasheet, we will offer a refund or replacement. For full details of the Abpromise, please visit <https://www.abcam.co.jp/abpromise> or contact our technical team.

Terms and conditions

- Guarantee only valid for products bought direct from Abcam or one of our authorized distributors