

Anti-EGF antibody ab9695

★★★★★ [3 Abreviews](#) [31 References](#) [画像数 2](#)

製品の概要

製品名	Anti-EGF antibody
製品の詳細	Rabbit polyclonal to EGF
由来種	Rabbit
アプリケーション	適用あり: WB, IHC-P, ELISA, Neutralising, Sandwich ELISA
種交差性	交差種: Human, Recombinant fragment
免疫原	Recombinant full length protein corresponding to Human EGF. Highly pure (>98%) recombinant hEGF (human Epidermal Growth Factor) Database link: P01133
特記事項	<p>Although some customers have been successful in IHC we no longer batch test in this application. For IHC validate antibody please see ab184265.</p> <p>The Life Science industry has been in the grips of a reproducibility crisis for a number of years. Abcam is leading the way in addressing this with our range of recombinant monoclonal antibodies and knockout edited cell lines for gold-standard validation. Please check that this product meets your needs before purchasing.</p> <p>If you have any questions, special requirements or concerns, please send us an inquiry and/or contact our Support team ahead of purchase. Recommended alternatives for this product can be found below, along with publications, customer reviews and Q&As</p>

製品の特性

製品の状態	Lyophilized:Reconstitute with 200µl of sterile water.
保存方法	Shipped at 4°C. Store at +4°C short term (1-2 weeks). Upon delivery aliquot. Store at -20°C long term.
バッファー	No preservative, sterile filtered
精製度	Immunogen affinity purified
ポリ/モノ	ポリクローナル
アイソタイプ	IgG
軽鎖の種類	unknown

アプリケーション

The Abpromise guarantee

Abpromise保証は、次のテスト済みアプリケーションにおけるab9695の使用に適用されます

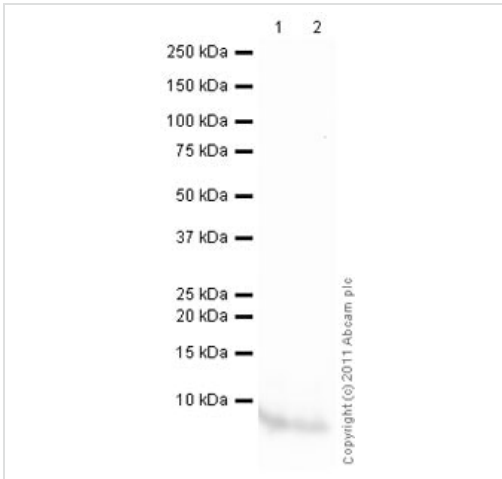
アプリケーションノートには、推奨の開始希釈率がありますが、適切な希釈率につきましてはご検討ください。

アプリケーション	Abreviews	特記事項
WB	★★★★★ (2)	Use a concentration of 0.1 - 0.2 µg/ml. To detect hEGF by Western Blot analysis this antibody can be used at a concentration of 0.1 - 0.2 µg/ml. Used in conjunction with compatible secondary reagents the detection limit for recombinant hEGF is 1.5 - 3.0 ng/lane, under either reducing or non-reducing conditions. Western blot bands should be around 6.2 kDa.
IHC-P	★★★★★ (1)	Use at an assay dependent concentration.
ELISA		Use at an assay dependent concentration. To detect hEGF by direct ELISA (using 100µl/well antibody solution) a concentration of at least 0.5µg/ml of this antibody is required. This antigen affinity purified antibody, in conjunction with compatible secondary reagents, allows the detection of 0.2 - 0.4 ng/well of recombinant hEGF.
Neutralising		Use at an assay dependent concentration. To yield one-half maximal inhibition [ND50] of the biological activity of hEGF (2.0 ng/ml), a concentration of 0.25 - 0.35 µg/ml of this antibody is required.
Sandwich ELISA		Use a concentration of 0.5 - 2 µg/ml. For sandwich ELISA, use this antibody as Detection at 0.5µg/ml with ab18635 as Capture.

ターゲット情報

機能	EGF stimulates the growth of various epidermal and epithelial tissues in vivo and in vitro and of some fibroblasts in cell culture. Magnesiotropic hormone that stimulates magnesium reabsorption in the renal distal convoluted tubule via engagement of EGFR and activation of the magnesium channel TRPM6. Can induce neurite outgrowth in motoneurons of the pond snail <i>Lymnaea stagnalis</i> in vitro (PubMed:10964941).
組織特異性	Expressed in kidney, salivary gland, cerebrum and prostate.
関連疾患	Hypomagnesemia 4
配列類似性	Contains 9 EGF-like domains. Contains 9 LDL-receptor class B repeats.
翻訳後修飾	O-glycosylated with core 1-like and core 2-like glycans. It is uncertain if Ser-954 or Thr-955 is O-glycosylated. The modification here shows glycan heterogeneity: HexHexNAc (major) and Hex2HexNAc2 (minor).
細胞内局在	Membrane.

画像

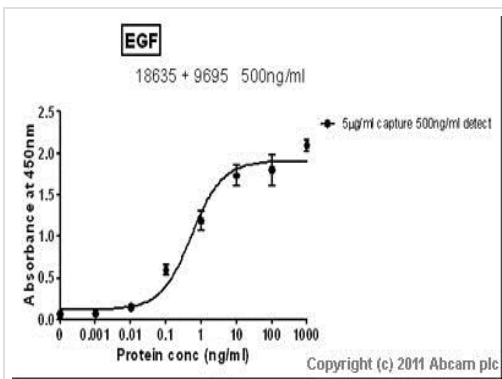


Western blot - Anti-EGF antibody (ab9695)

Primary ab9695 was used at a dilution of 0.2 ug/ml.

Lane 1: 250 ng Recombinant human EGF protein

Lane 2: 125 ng Recombinant human EGF protein



Sandwich ELISA - Anti-EGF antibody (ab9695)

Standard Curve for EGF (Analyte: **ab51082**) dilution range 1pg/ml to 1ug/ml using Capture Antibody Mouse monoclonal [S-177] to EGF (**ab18635**) at 5ug/ml and Detector Antibody Rabbit polyclonal to EGF (ab9695) at 0.5ug/ml

Please note: All products are "FOR RESEARCH USE ONLY. NOT FOR USE IN DIAGNOSTIC PROCEDURES"

Our Abpromise to you: Quality guaranteed and expert technical support

- Replacement or refund for products not performing as stated on the datasheet
- Valid for 12 months from date of delivery
- Response to your inquiry within 24 hours
- We provide support in Chinese, English, French, German, Japanese and Spanish
- Extensive multi-media technical resources to help you
- We investigate all quality concerns to ensure our products perform to the highest standards

If the product does not perform as described on this datasheet, we will offer a refund or replacement. For full details of the Abpromise, please visit <https://www.abcam.co.jp/abpromise> or contact our technical team.

Terms and conditions

- Guarantee only valid for products bought direct from Abcam or one of our authorized distributors