


### Anti-eEF1B2 antibody ab37725

KO 評価済

3 References 画像数 4

#### 製品の概要

製品名	Anti-eEF1B2 antibody
製品の詳細	Rabbit polyclonal to eEF1B2
由来種	Rabbit
特異性	From Jan 2024, QC testing of replenishment batches of this polyclonal changed. All tested and expected application and reactive species combinations are still covered by our Abcam product promise. However, we no longer test all applications. For more information on a specific batch, please contact our Scientific Support who will be happy to help.
アプリケーション	適用あり: WB, IHC-P, ICC/IF
種交差性	交差種: Human 交差が予測される動物種: Mouse, Rabbit, Cow, Pig 
免疫原	Synthetic peptide conjugated to KLH derived from within residues 1 - 100 of Human eEF1B2.Immunogen の所有権に関して(Peptide available as <a href="#">ab37955</a> .)
ポジティブ・コントロール	HeLa (Human epithelial carcinoma cell line) Whole Cell Lysate, Jurkat (Human T cell lymphoblast-like cell line) Whole Cell Lysate, A431 (Human epithelial carcinoma cell line) Whole Cell Lysate, HEK 293 (Human embryonic kidney cell line) Whole Cell Lysate, HepG2 (Human hepatocellular liver carcinoma cell line) Whole Cell Lysate, MCF-7 (Human breast adenocarcinoma cell line) Whole Cell Lysate and U2OS (Human osteosarcoma cell line) Whole Cell Lysate.
特記事項	<p>The Life Science industry has been in the grips of a reproducibility crisis for a number of years. Abcam is leading the way in addressing this with our range of recombinant monoclonal antibodies and knockout edited cell lines for gold-standard validation. Please check that this product meets your needs before purchasing.</p> <p>If you have any questions, special requirements or concerns, please send us an inquiry and/or contact our Support team ahead of purchase. Recommended alternatives for this product can be found below, along with publications, customer reviews and Q&amp;As</p>

#### 製品の特性

製品の状態	Liquid
保存方法	Shipped at 4°C. Store at +4°C short term (1-2 weeks). Upon delivery aliquot. Store at -20°C or -80°C. Avoid freeze / thaw cycle.

## バッファー

pH: 7.40  
Preservative: 0.02% Sodium azide  
Constituent: PBS

Batches of this product that have a concentration < 1mg/ml may have BSA added as a stabilising agent. If you would like information about the formulation of a specific lot, please contact our scientific support team who will be happy to help.

## 精製度

Immunogen affinity purified

## ポリ/モノ

ポリクローナル

## アイソタイプ

IgG

## アプリケーション

### The Abpromise guarantee

**Abpromise保証は、次のテスト済みアプリケーションにおけるab37725の使用に適用されます**

アプリケーションノートには、推奨の開始希釈率がありますが、適切な希釈率につきましてはご検討ください。

アプリケーション	Abreviews	特記事項
WB		1/250. Detects a band of approximately 30 kDa (predicted molecular weight: 25 kDa).
IHC-P		Use a concentration of 1 µg/ml.
ICC/IF		Use a concentration of 5 µg/ml.

## ターゲット情報

### 機能

EF-1-beta and EF-1-delta stimulate the exchange of GDP bound to EF-1-alpha to GTP.

### 配列類似性

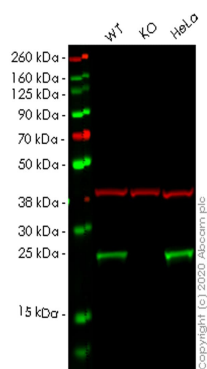
Belongs to the EF-1-beta/EF-1-delta family.

Contains 1 GST C-terminal domain.

### 翻訳後修飾

Phosphorylation affects the GDP/GTP exchange rate.

## 画像



Western blot - Anti-eEF1B2 antibody (ab37725)

**All lanes** : Anti-eEF1B2 antibody (ab37725) at 1/500 dilution

**Lane 1** : Wild-type HEK293T cell lysate

**Lane 2** : eEF1B2 knockout HEK293T cell lysate

**Lane 3** : HeLa cell lysate

Lysates/proteins at 20 µg per lane.

#### Secondary

**All lanes** : Goat anti-Rabbit IgG H&L (IRDye® 800CW)

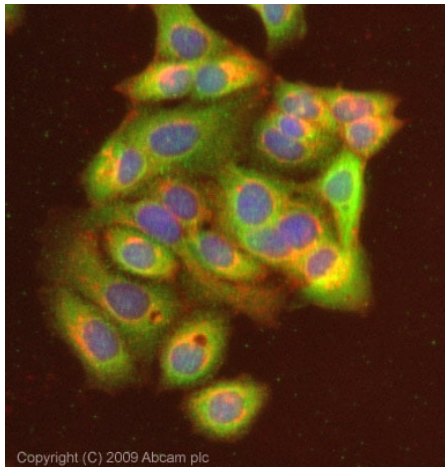
preadsorbed ([ab216773](#)) at 1/10000 dilution

**Predicted band size:** 25 kDa

**Observed band size:** 30 kDa

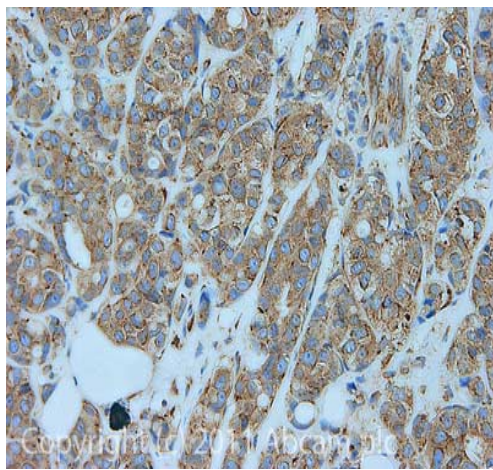
**Lanes 1-3:** Merged signal (red and green). Green - ab37725 observed at 30 kDa. Red - loading control [ab7291](#) observed at 50 kDa.

ab37725 Anti-eEF1B2 antibody was shown to specifically react with eEF1B2 in wild-type HEK293T cells. Loss of signal was observed when knockout cell line [ab266769](#) (knockout cell lysate [ab257934](#)) was used. Wild-type and eEF1B2 knockout samples were subjected to SDS-PAGE. ab37725 and Anti-alpha Tubulin antibody [DM1A] - Loading Control ([ab7291](#)) were incubated overnight at 4°C at 1 in 500 dilution and 1 in 20000 dilution respectively. Blots were developed with Goat anti-Rabbit IgG H&L (IRDye® 800CW) preadsorbed ([ab216773](#)) and Goat anti-Mouse IgG H&L (IRDye® 680RD) preadsorbed ([ab216776](#)) secondary antibodies at 1 in 20000 dilution for 1 hour at room temperature before imaging.



Immunocytochemistry/ Immunofluorescence - Anti-eEF1B2 antibody (ab37725)

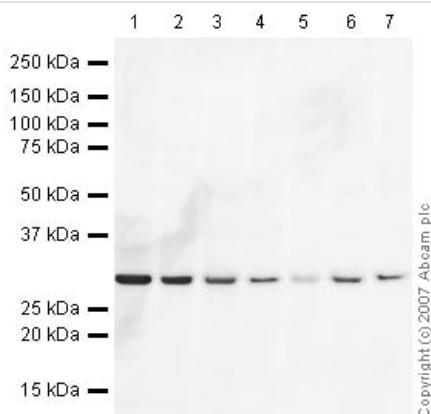
ICC/IF image of ab37725 stained MCF7 cells. The cells were 100% methanol fixed (5 min) and then incubated in 1%BSA / 10% normal goat serum / 0.3M glycine in 0.1% PBS-Tween for 1h to permeabilise the cells and block non-specific protein-protein interactions. The cells were then incubated with the antibody (ab37725, 5µg/ml) overnight at +4°C. The secondary antibody (green) was Alexa Fluor® 488 goat anti-rabbit IgG (H+L) used at a 1/1000 dilution for 1h. Alexa Fluor® 594 WGA was used to label plasma membranes (red) at a 1/200 dilution for 1h. DAPI was used to stain the cell nuclei (blue) at a concentration of 1.43µM. This antibody also gave a positive result in 100% methanol fixed (5 min) HeLa, HepG2 and Hek293 cells at 5µg/ml, and in 4% PFA fixed (10 min) HeLa, Hek293, HepG2 and MCF7 cells at 5µg/ml.



Immunohistochemistry (Formalin/PFA-fixed paraffin-embedded sections) - Anti-eEF1B2 antibody (ab37725)

IHC image of ab37725 staining eEF1B2 in Human breast adenocarcinoma formalin fixed paraffin embedded tissue section, performed on a Leica Bond™ system using the standard protocol F. The section was pre-treated using heat mediated antigen retrieval with sodium citrate buffer (pH6, epitope retrieval solution 1) for 20 mins. The section was then incubated with ab37725, 1µg/ml, for 15 mins at room temperature and detected using an HRP conjugated compact polymer system. DAB was used as the chromogen. The section was then counterstained with haematoxylin and mounted with DPX.

For other IHC staining systems (automated and non-automated) customers should optimize variable parameters such as antigen retrieval conditions, primary antibody concentration and antibody incubation times.



Western blot - Anti-eEF1B2 antibody (ab37725)

**All lanes :** Anti-eEF1B2 antibody (ab37725) at 1/250 dilution

**Lane 1 :** HeLa (Human epithelial carcinoma cell line) Whole Cell Lysate

**Lane 2 :** Jurkat whole cell lysate ([ab7899](#))

**Lane 3 :** A-431 whole cell lysate ([ab7909](#))

**Lane 4 :** HEK-293 whole cell lysate ([ab7902](#))

**Lane 5 :** Hep G2 whole cell lysate ([ab7900](#))

**Lane 6 :** MCF-7 (Human breast adenocarcinoma cell line) Whole Cell Lysate

**Lane 7 :** U2OS (Human osteosarcoma cell line) Whole Cell Lysate

Lysates/proteins at 10 µg per lane.

**Secondary**

**All lanes :** IRDye 680 Conjugated Goat Anti-Rabbit IgG (H+L) at  
1/15000 dilution

Performed under reducing conditions.

**Predicted band size:** 25 kDa

**Observed band size:** 30 kDa

**Please note:** All products are "FOR RESEARCH USE ONLY. NOT FOR USE IN DIAGNOSTIC PROCEDURES"

**Our Abpromise to you: Quality guaranteed and expert technical support**

---

- Replacement or refund for products not performing as stated on the datasheet
- Valid for 12 months from date of delivery
- Response to your inquiry within 24 hours
- We provide support in Chinese, English, French, German, Japanese and Spanish
- Extensive multi-media technical resources to help you
- We investigate all quality concerns to ensure our products perform to the highest standards

If the product does not perform as described on this datasheet, we will offer a refund or replacement. For full details of the Abpromise, please visit <https://www.abcam.co.jp/abpromise> or contact our technical team.

**Terms and conditions**

---

- Guarantee only valid for products bought direct from Abcam or one of our authorized distributors