


Anti-eEF1A1+eEF1A2+eEF1AL3 antibody ab37969

★★★★★ [2 Abreviews](#) [10 References](#) [画像数 4](#)

製品の概要

製品名	Anti-eEF1A1+eEF1A2+eEF1AL3 antibody
製品の詳細	Rabbit polyclonal to eEF1A1+eEF1A2+eEF1AL3
由来種	Rabbit
特異性	Due to sequence homology the antibody recognises all three eEF1A forms, eEF1A1, eEF1A2 and eEF1A3. Through WB ab37969 was found to detect recombinant and endogenous eF1A1 and eF1A2.
アプリケーション	適用あり: ICC/IF, WB
種交差性	交差種: Mouse, Rat, Human 交差が予測される動物種: Sheep, Rabbit, Horse, Chicken, Hamster, Cow, Cat, Dog, Pig, Chimpanzee, Macaque monkey 
免疫原	Synthetic peptide corresponding to Human eEF1A1+eEF1A2+eEF1AL3 aa 200-300 conjugated to keyhole limpet haemocyanin. (Peptide available as ab37968)
ポジティブ・コントロール	This antibody gave a positive signal in the following: Human Whole Cell Lysates (HeLa, Jurkat, A431, HEK 293, HepG2, MCF-7, SHSY-5Y, U2OS) Mouse Whole Cell Lysates (NIH 3T3, MEF1) Mouse Tissue Lysates (Brain, Liver, Heart, Kidney, Pancreas, Testis, Skeletal muscle, Spinal Cord, Ovary) Rat Whole Cell Lysate(PC12) Rat Tissue Lysate (Brain, Liver, Heart)
特記事項	<p>The Life Science industry has been in the grips of a reproducibility crisis for a number of years. Abcam is leading the way in addressing this with our range of recombinant monoclonal antibodies and knockout edited cell lines for gold-standard validation. Please check that this product meets your needs before purchasing.</p> <p>If you have any questions, special requirements or concerns, please send us an inquiry and/or contact our Support team ahead of purchase. Recommended alternatives for this product can be found below, along with publications, customer reviews and Q&As</p>

製品の特性

製品の状態	Liquid
保存方法	Shipped at 4°C. Store at +4°C short term (1-2 weeks). Upon delivery aliquot. Store at -20°C or -80°C. Avoid freeze / thaw cycle.
バッファー	pH: 7.40

Preservative: 0.02% Sodium azide
Constituent: PBS

Batches of this product that have a concentration < 1mg/ml may have BSA added as a stabilising agent. If you would like information about the formulation of a specific lot, please contact our scientific support team who will be happy to help.

精製度

Immunogen affinity purified

ポリ/モノ

ポリクローナル

アイソタイプ

IgG

アプリケーション

The Abpromise guarantee **Abpromise保証は、次のテスト済みアプリケーションにおけるab37969の使用に適用されます**
アプリケーションノートには、推奨の開始希釈率がありますが、適切な希釈率につきましてはご検討ください。

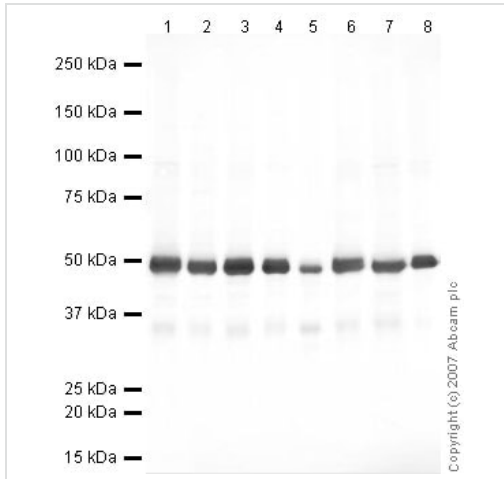
アプリケーション	Abreviews	特記事項
ICC/IF	★★★★★ (1)	Use a concentration of 1 µg/ml.
WB		Use a concentration of 1 µg/ml. Detects a band of approximately 50 kDa (predicted molecular weight: 50 kDa).

ターゲット情報

関連性

Function: This protein promotes the GTP-dependent binding of aminoacyl-tRNA to the A-site of ribosomes during protein biosynthesis. Tissue specificity eEF1A1: Brain, placenta, lung, liver, kidney, pancreas but barely detectable in heart and skeletal muscle. Tissue specificity eEF1A2: Brain, heart, and skeletal muscle. Similarity: Belongs to the GTP-binding elongation factor family. EF-Tu/EF-1A subfamily. PTM eEF1A1: ISGylated.

画像



Western blot - Anti-eEF1A1+eEF1A2+eEF1AL3 antibody (ab37969)

All lanes : Anti-eEF1A1+eEF1A2+eEF1AL3 antibody (ab37969) at 1 µg/ml

Lane 1 : HeLa (Human epithelial carcinoma cell line) Whole Cell Lysate

Lane 2 : Jurkat whole cell lysate ([ab7899](#))

Lane 3 : A-431 whole cell lysate ([ab7909](#))

Lane 4 : HEK-293 whole cell lysate ([ab7902](#))

Lane 5 : Hep G2 whole cell lysate ([ab7900](#))

Lane 6 : MCF-7 (Human breast adenocarcinoma cell line) Whole Cell Lysate

Lane 7 : SHSY-5Y (Human neuroblastoma cell line) Whole Cell Lysate

Lane 8 : U2OS (Human osteosarcoma cell line) Whole Cell Lysate

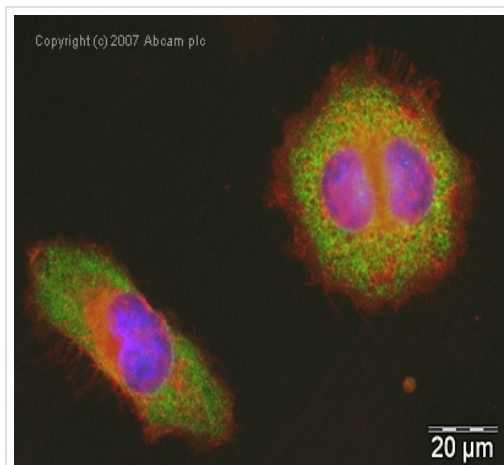
Lysates/proteins at 10 µg per lane.

Secondary

All lanes : IRDye 680 Conjugated Goat Anti-Rabbit IgG (H+L) at 1/10000 dilution

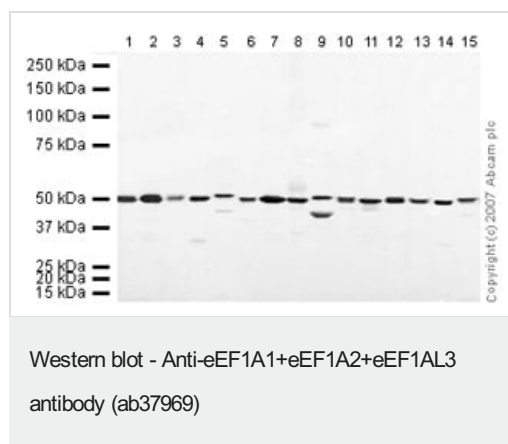
Performed under reducing conditions.

Predicted band size: 50 kDa



Immunocytochemistry/ Immunofluorescence - Anti-eEF1A1+eEF1A2+eEF1AL3 antibody (ab37969)

ICC/IF image of ab37969 stained human HeLa cells. The cells were PFA fixed (10 min), permeabilised in TBS-T (20 min) and incubated with the antibody (ab37969, 1µg/ml) for 1h at room temperature. 1%BSA / 10% normal serum / 0.3M glycine was used to quench autofluorescence and block non-specific protein-protein interactions. The secondary antibody (green) was Alexa Fluor® 488 goat anti-rabbit IgG (H+L) used at a 1/1000 dilution for 1h. Alexa Fluor® 594 WGA was used to label plasma membranes (red). DAPI was used to stain the cell nuclei (blue).



All lanes : Anti-eEF1A1+eEF1A2+eEF1AL3 antibody (ab37969) at 1 µg/ml

Lane 1 : NIH/3T3 whole cell lysate ([ab7179](#))

Lane 2 : MEF1 (Mouse embryonic fibroblast cell line) Whole Cell Lysate

Lane 3 : Brain (Mouse) Tissue Lysate

Lane 4 : Liver (Mouse) Tissue Lysate - normal tissue

Lane 5 : Heart (Mouse) Tissue Lysate

Lane 6 : Kidney (Mouse) Tissue Lysate

Lane 7 : Mouse pancreas tissue lysate - total protein ([ab29363](#))

Lane 8 : Testis (Mouse) Tissue Lysate

Lane 9 : Mouse skeletal muscle tissue lysate - total protein ([ab29711](#))

Lane 10 : Spinal Cord (Mouse) Tissue Lysate

Lane 11 : Ovary (Mouse) Tissue Lysate - normal tissue

Lane 12 : PC12 (Rat adrenal pheochromocytoma cell line) Whole Cell Lysate

Lane 13 : Brain (Rat) Tissue Lysate - normal tissue

Lane 14 : Liver (Rat) Tissue Lysate

Lane 15 : Heart (Rat) Tissue Lysate

Lane 16 : Kidney (Rat) Whole Cell Lysate - normal tissue ([ab29480](#))

Lysates/proteins at 10 µg per lane.

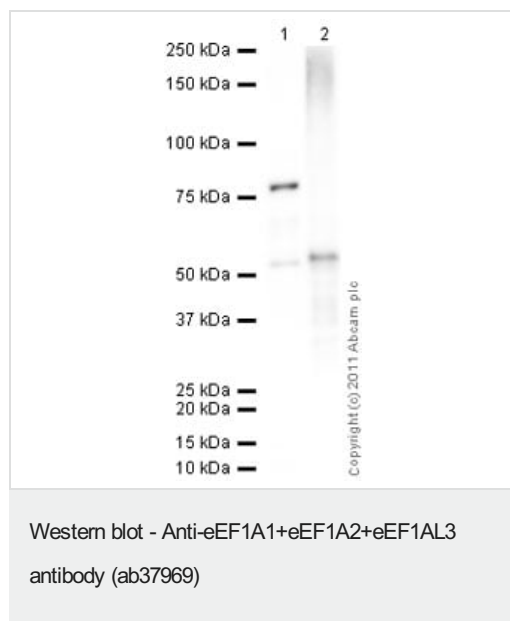
Secondary

All lanes : IRDye 680 Conjugated Goat Anti-Rabbit IgG (H+L) at 1/10000 dilution

Performed under reducing conditions.

Predicted band size: 50 kDa

Additional bands at: 45 kDa. We are unsure as to the identity of these extra bands.



All lanes : Anti-eEF1A1+eEF1A2+eEF1AL3 antibody (ab37969) at 1 µg/ml

Lane 1 : Recombinant Human eEF1A1/EF-Tu protein ([ab81792](#))

Lane 2 : Human EEF1A2 full length protein ([ab40317](#))

Lysates/proteins at 0.1 µg per lane.

Secondary

All lanes : Goat Anti-Rabbit IgG H&L (HRP) preadsorbed ([ab97080](#)) at 1/5000 dilution

Performed under reducing conditions.

Predicted band size: 50 kDa

Exposure time: 3 minutes

Please note: All products are "FOR RESEARCH USE ONLY. NOT FOR USE IN DIAGNOSTIC PROCEDURES"

Our Abpromise to you: Quality guaranteed and expert technical support

- Replacement or refund for products not performing as stated on the datasheet
- Valid for 12 months from date of delivery
- Response to your inquiry within 24 hours
- We provide support in Chinese, English, French, German, Japanese and Spanish
- Extensive multi-media technical resources to help you
- We investigate all quality concerns to ensure our products perform to the highest standards

If the product does not perform as described on this datasheet, we will offer a refund or replacement. For full details of the Abpromise, please visit <https://www.abcam.co.jp/abpromise> or contact our technical team.

Terms and conditions

- Guarantee only valid for products bought direct from Abcam or one of our authorized distributors