

# Anti-EDIL3/DEL1 antibody [EPR12451] ab190692

リコンビナント RabMAb

画像数 6

### 製品の概要

製品名	Anti-EDIL3/DEL1 antibody [EPR12451]
製品の詳細	Rabbit monoclonal [EPR12451] to EDIL3/DEL1
由来種	Rabbit
アプリケーション	<b>適用あり:</b> Flow Cyt (Intra), ICC/IF, WB, IP <b>適用なし:</b> IHC-P
種交差性	<b>交差種:</b> Mouse, Rat, Human
免疫原	Synthetic peptide. This information is proprietary to Abcam and/or its suppliers.
ポジティブ・コントロール	HeLa, HUVEC, BxPC-3, 293, C6, Raw264.7, PC12 and NIH 3T3 cell lysate; A431 and HeLa cells
特記事項	This product is a recombinant monoclonal antibody, which offers several advantages including: <ul style="list-style-type: none"><li>- High batch-to-batch consistency and reproducibility</li><li>- Improved sensitivity and specificity</li><li>- Long-term security of supply</li><li>- Animal-free production</li></ul> For more information <a href="#">see here</a> . Our RabMAb <sup>®</sup> technology is a patented hybridoma-based technology for making rabbit monoclonal antibodies. For details on our patents, please refer to <a href="#">RabMAb<sup>®</sup> patents</a> .

### 製品の特性

製品の状態	Liquid
保存方法	Shipped at 4°C. Store at +4°C short term (1-2 weeks). Upon delivery aliquot. Store at -20°C long term. Avoid freeze / thaw cycle.
バッファー	pH: 7.2 Preservative: 0.01% Sodium azide Constituents: 59% PBS, 40% Glycerol (glycerin, glycerine), 0.05% BSA
精製度	Protein A purified
ポリ/モノ	モノクローナル
クローン名	EPR12451
アイソタイプ	IgG

## アプリケーション

The Abpromise guarantee **Abpromise保証は、次のテスト済みアプリケーションにおけるab190692の使用に適用されます**  
アプリケーションノートには、推奨の開始希釈率がありますが、適切な希釈率につきましてはご検討ください。

アプリケーション	Abreviews	特記事項
Flow Cyt (Intra)		1/340. <b>ab172730</b> - Rabbit monoclonal IgG, is suitable for use as an isotype control with this antibody.
ICC/IF		1/250 - 1/500.
WB		1/10000 - 1/50000. Predicted molecular weight: 54 kDa.
IP		1/30.

追加情報 Is unsuitable for IHC-P.

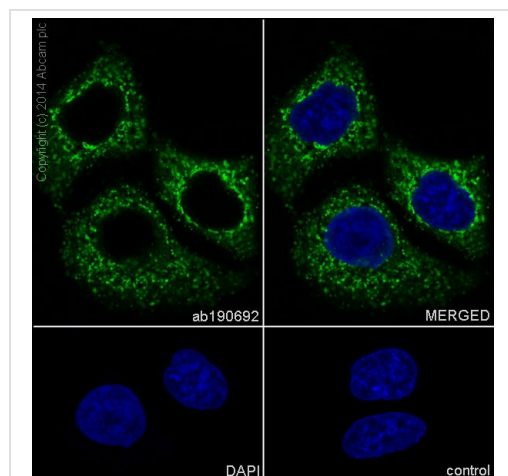
## ターゲット情報

**機能** Promotes adhesion of endothelial cells through interaction with the alpha-v/beta-3 integrin receptor. Inhibits formation of vascular-like structures. May be involved in regulation of vascular morphogenesis of remodeling in embryonic development.

**配列類似性** Contains 3 EGF-like domains.  
Contains 2 F5/8 type C domains.

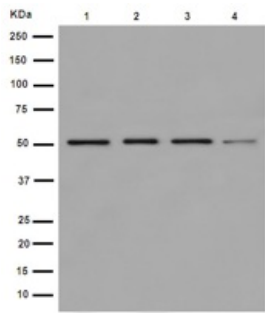
**細胞内局在** Secreted.

## 画像



Immunofluorescent staining of 4% paraformaldehyde fixed HeLa cells labeling EDIL3/DEL1 with ab190692 at 1/250 dilution (green) and DAPI nuclear staining (blue). Secondary staining with Goat anti Rabbit IgG (Alexa Fluor® 488). The image also shows negative control cells.

Immunocytochemistry/ Immunofluorescence - Anti-EDIL3/DEL1 antibody [EPR12451] (ab190692)



Western blot - Anti-EDIL3/DEL1 antibody [EPR12451] (ab190692)

**All lanes** : Anti-EDIL3/DEL1 antibody [EPR12451] (ab190692) at 1/10000 dilution

**Lane 1** : HeLa cell lysate

**Lane 2** : HUVEC cell lysate

**Lane 3** : BxPC-3 cell lysate

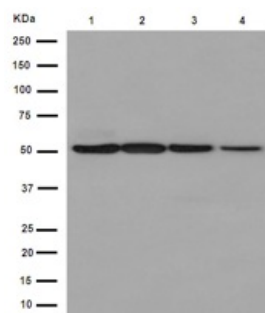
**Lane 4** : 293 cell lysate

Lysates/proteins at 20 µg per lane.

### Secondary

**All lanes** : Goat Anti-Rabbit IgG, (H+L), Peroxidase conjugated at 1/1000 dilution

**Predicted band size:** 54 kDa



Western blot - Anti-EDIL3/DEL1 antibody [EPR12451] (ab190692)

**All lanes** : Anti-EDIL3/DEL1 antibody [EPR12451] (ab190692) at 1/1000 dilution

**Lane 1** : C6 cell lysate

**Lane 2** : RAW 264.7 cell lysate

**Lane 3** : PC-12 cell lysate

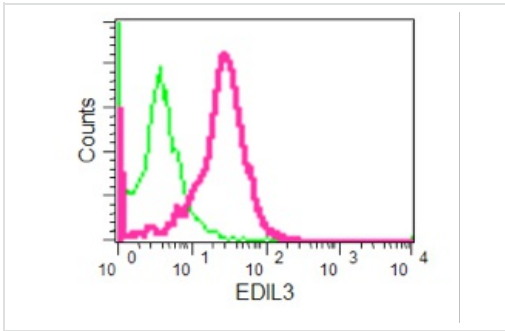
**Lane 4** : NIH/3T3 cell lysate

Lysates/proteins at 10 µg per lane.

### Secondary

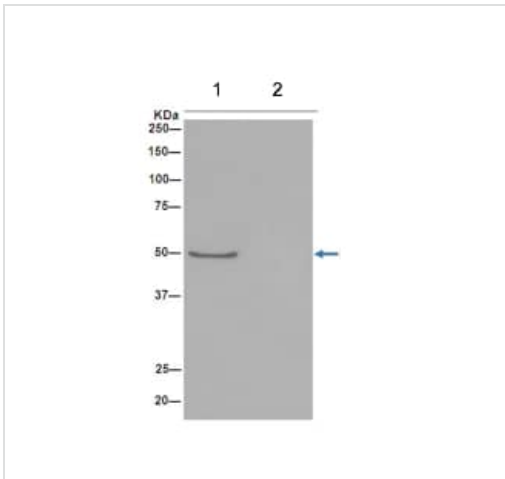
**All lanes** : Goat Anti-Rabbit IgG, (H+L), Peroxidase conjugated at 1/1000 dilution

**Predicted band size:** 54 kDa



Flow Cytometry (Intracellular) - Anti-EDIL3/DEL1 antibody [EPR12451] (ab190692)

Intracellular flow cytometric analysis of 2% paraformaldehyde HeLa cells labeling EDIL3/DEL1 with ab190692 at 1/340 dilution (red) compared to a Rabbit monoclonal IgG control antibody (green). Secondary staining with Goat anti Rabbit IgG (FITC).



Immunoprecipitation - Anti-EDIL3/DEL1 antibody [EPR12451] (ab190692)

Immunoprecipitation analysis of HeLa cell lysate labeling EDIL3/DEL1 with ab190692 at 1/50 dilution (lane 1) compared to a PBS control (lane 2). Secondary staining with anti-Rabbit IgG (HRP), specific to the non-reduced form of IgG antibody at 1/1500 dilution.

**Why choose a recombinant antibody?**

 <b>Research with confidence</b> Consistent and reproducible results	 <b>Long-term and scalable supply</b> Recombinant technology
 <b>Success from the first experiment</b> Confirmed specificity	 <b>Ethical standards compliant</b> Animal-free production

Anti-EDIL3/DEL1 antibody [EPR12451] (ab190692)

**Please note:** All products are "FOR RESEARCH USE ONLY. NOT FOR USE IN DIAGNOSTIC PROCEDURES"

**Our Abpromise to you: Quality guaranteed and expert technical support**

- Replacement or refund for products not performing as stated on the datasheet
- Valid for 12 months from date of delivery
- Response to your inquiry within 24 hours
  
- We provide support in Chinese, English, French, German, Japanese and Spanish
- Extensive multi-media technical resources to help you
- We investigate all quality concerns to ensure our products perform to the highest standards

If the product does not perform as described on this datasheet, we will offer a refund or replacement. For full details of the Abpromise, please visit <https://www.abcam.co.jp/abpromise> or contact our technical team.

### **Terms and conditions**

---

- Guarantee only valid for products bought direct from Abcam or one of our authorized distributors