


Anti-EDG6/S1PR4 antibody ab92993

画像数 1

製品の概要

製品名	Anti-EDG6/S1PR4 antibody
製品の詳細	Rabbit polyclonal to EDG6/S1PR4
由来種	Rabbit
特異性	From Mar 2024, QC testing of replenishment batches of this polyclonal changed. All tested and expected application and reactive species combinations are still covered by our Abcam product promise. However, we no longer test all applications. For more information on a specific batch, please contact our Scientific Support who will be happy to help.
アプリケーション	適用あり: WB
種交差性	交差種: Human 交差が予測される動物種: Cow, Dog, Pig, Macaque monkey, Gorilla 
免疫原	Synthetic peptide corresponding to Human EDG6/S1PR4 aa 150-250 conjugated to keyhole limpet haemocyanin. (Peptide available as ab126638)
ポジティブ・コントロール	This antibody gave a positive signal in Jurkat whole cell lysate as well as the following tissue lysates: Human Spleen; Human Tonsil; Human Lymph node.
特記事項	<p>The Life Science industry has been in the grips of a reproducibility crisis for a number of years. Abcam is leading the way in addressing this with our range of recombinant monoclonal antibodies and knockout edited cell lines for gold-standard validation. Please check that this product meets your needs before purchasing.</p> <p>If you have any questions, special requirements or concerns, please send us an inquiry and/or contact our Support team ahead of purchase. Recommended alternatives for this product can be found below, along with publications, customer reviews and Q&As</p>

製品の特性

製品の状態	Liquid
保存方法	Shipped at 4°C. Store at +4°C short term (1-2 weeks). Upon delivery aliquot. Store at -20°C or -80°C. Avoid freeze / thaw cycle.
バッファー	pH: 7.40 Preservative: 0.02% Sodium azide Constituent: PBS

Batches of this product that have a concentration < 1mg/ml may have BSA added as a stabilising agent. If you would like information about the formulation of a specific lot, please contact our scientific support team who will be happy to help.

精製度 Immunogen affinity purified
ポリ/モノ ポリクローナル
アイソタイプ IgG

アプリケーション

The Abpromise guarantee **Abpromise保証は、次のテスト済みアプリケーションにおけるab92993の使用に適用されます**
アプリケーションノートには、推奨の開始希釈率がありますが、適切な希釈率につきましてはご検討ください。

アプリケーション	Abreviews	特記事項
WB		Use a concentration of 1 µg/ml. Detects a band of approximately 48 kDa (predicted molecular weight: 42 kDa).

ターゲット情報

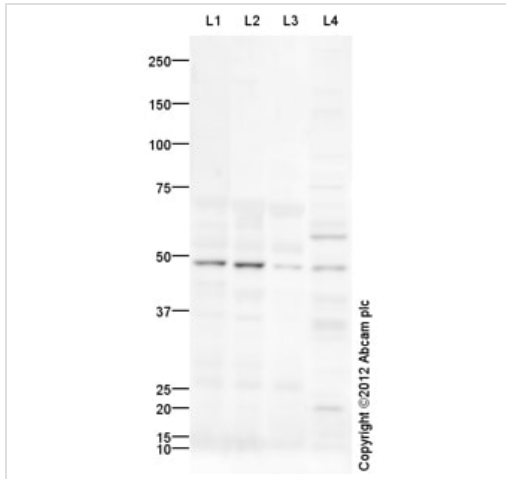
機能 Receptor for the lysosphingolipid sphingosine 1-phosphate (S1P). S1P is a bioactive lysophospholipid that elicits diverse physiological effect on most types of cells and tissues. May be involved in cell migration processes that are specific for lymphocytes.

組織特異性 Specifically expressed in fetal and adult lymphoid and hematopoietic tissue as well as in lung. Considerable level of expression in adult and fetal spleen as well as adult peripheral leukocytes and lung. Lower expression in adult thymus, lymph node, bone marrow, and appendix as well as in fetal liver, thymus, and lung.

配列類似性 Belongs to the G-protein coupled receptor 1 family.

細胞内局在 Cell membrane.

画像



Western blot - Anti-EDG6/S1PR4 antibody
(ab92993)

All lanes : Anti-EDG6/S1PR4 antibody (ab92993) at 1 µg/ml

Lane 1 : Human spleen tissue lysate - total protein (**ab29699**)

Lane 2 : Tonsil (Human) Tissue Lysate

Lane 3 : Human lymph node tissue lysate - total protein (**ab29871**)

Lane 4 : Jurkat (Human T cell lymphoblast-like cell line) Whole Cell Lysate

Lysates/proteins at 10 µg per lane.

Secondary

All lanes : Goat Anti-Rabbit IgG H&L (HRP) preadsorbed (**ab97080**) at 1/5000 dilution

Developed using the ECL technique.

Performed under reducing conditions.

Predicted band size: 42 kDa

Observed band size: 48 kDa

Additional bands at: 56 kDa. We are unsure as to the identity of these extra bands.

Exposure time: 12 minutes

EDG6/S1PR4 contains a number of potential glycosylation sites (SwissProt) which may explain its migration at a higher molecular weight than predicted.

Please note: All products are "FOR RESEARCH USE ONLY. NOT FOR USE IN DIAGNOSTIC PROCEDURES"

Our Abpromise to you: Quality guaranteed and expert technical support

- Replacement or refund for products not performing as stated on the datasheet
- Valid for 12 months from date of delivery
- Response to your inquiry within 24 hours
- We provide support in Chinese, English, French, German, Japanese and Spanish
- Extensive multi-media technical resources to help you
- We investigate all quality concerns to ensure our products perform to the highest standards

If the product does not perform as described on this datasheet, we will offer a refund or replacement. For full details of the Abpromise, please visit <https://www.abcam.co.jp/abpromise> or contact our technical team.

Terms and conditions

- Guarantee only valid for products bought direct from Abcam or one of our authorized distributors