

Anti-EBP50/NHERF-1 antibody [EBP-10] ab9526

[13 References](#) [画像数 2](#)

製品の概要

製品名	Anti-EBP50/NHERF-1 antibody [EBP-10]
製品の詳細	Mouse monoclonal [EBP-10] to EBP50/NHERF-1
由来種	Mouse
特異性	Human ERM (ezrin/radixin/moesin)-binding phosphoprotein of 50 kDa (EBP50) / Na ⁺ /H ⁺ exchange regulatory factor (NHERF-1)
アプリケーション	適用あり: Flow Cyt, WB
種交差性	交差種: Human
免疫原	Recombinant full length protein corresponding to Human EBP50/NHERF-1.
ポジティブ・コントロール	RAJI human lymphoma cell lysate.
特記事項	<p>The Life Science industry has been in the grips of a reproducibility crisis for a number of years. Abcam is leading the way in addressing this with our range of recombinant monoclonal antibodies and knockout edited cell lines for gold-standard validation. Please check that this product meets your needs before purchasing.</p> <p>If you have any questions, special requirements or concerns, please send us an inquiry and/or contact our Support team ahead of purchase. Recommended alternatives for this product can be found below, along with publications, customer reviews and Q&As</p>

製品の特性

製品の状態	Liquid
保存方法	Shipped at 4°C. Store at +4°C short term (1-2 weeks). Upon delivery aliquot. Store at -20°C or -80°C. Avoid freeze / thaw cycle.
バッファー	pH: 7.40 Preservative: 0.097% Sodium azide Constituent: PBS
精製度	Protein A purified
特記事項 (精製)	Purified from hybridoma culture supernatant. Purity >95% by SDS-PAGE.
ポリクローナル	モノクローナル
クローン名	EBP-10
アイソタイプ	IgG2b

アプリケーション

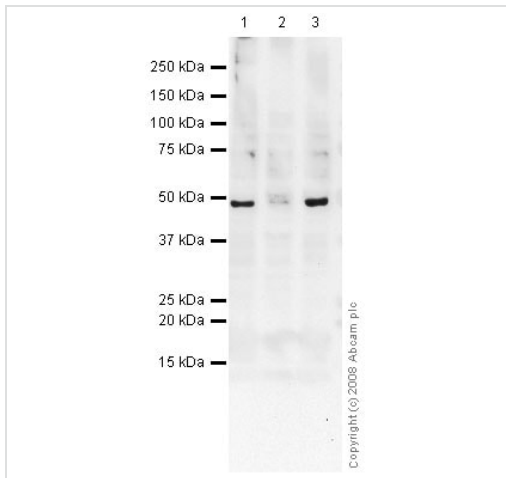
The Abpromise guarantee Abpromise保証は、次のテスト済みアプリケーションにおけるab9526の使用に適用されます
アプリケーションノートには、推奨の開始希釈率がありますが、適切な希釈率につきましてはご検討ください。

アプリケーション	Abreviews	特記事項
Flow Cyt		Use 1µg for 10 ⁶ cells. ab170192 - Mouse monoclonal IgG2b, is suitable for use as an isotype control with this antibody.
WB		Use at an assay dependent concentration. Recommended dilution: 2µg/ml. Sample preparation: Lysis buffer with maltoside (1%). Application note: Non-reducing conditions with SDS-PAGE (10% separating gel).

ターゲット情報

機能	Scaffold protein that connects plasma membrane proteins with members of the ezrin/moesin/radixin family and thereby helps to link them to the actin cytoskeleton and to regulate their surface expression. Necessary for recycling of internalized ADRB2. Was first known to play a role in the regulation of the activity and subcellular location of SLC9A3. Necessary for cAMP-mediated phosphorylation and inhibition of SLC9A3. May enhance Wnt signaling. May participate in HTR4 targeting to microvilli (By similarity). Interacts with MCC.
組織特異性	Detected in liver, kidney, pancreas, prostate, spleen, small intestine and placenta, in particular in the syncytiotrophoblast.
関連疾患	Defects in SLC9A3R1 are the cause of hypophosphatemic nephrolithiasis/osteoporosis type 2 (NPHLOP2) [MIM:612287]. Hypophosphatemia results from idiopathic renal phosphate loss. It contributes to the pathogenesis of hypophosphatemic urolithiasis (formation of urinary calculi) as well to that of hypophosphatemic osteoporosis (bone demineralization).
配列類似性	Contains 2 PDZ (DHR) domains.
翻訳後修飾	Phosphorylated on serine residues.
細胞内局在	Cytoplasm. Apical cell membrane. Endomembrane system. Cell projection > filopodium. Cell projection > ruffle. Cell projection > microvillus. Translocates from the cytoplasm to the apical cell membrane in a PODXL-dependent manner (By similarity). Colocalizes with actin in microvilli-rich apical regions of the syncytiotrophoblast. Found in microvilli, ruffling membrane and filopodia of HeLa cells. Present in lipid rafts of T-cells.

画像



Western blot - Anti-EBP50/NHERF-1 antibody [EBP-10] (ab9526)

All lanes : Anti-EBP50/NHERF-1 antibody [EBP-10] (ab9526) at 2 $\mu\text{g/ml}$

Lane 1 : HepG2 (Human hepatocellular liver carcinoma cell line) Whole Cell Lysate

Lane 2 : HeLa (Human epithelial carcinoma cell line) Whole Cell Lysate

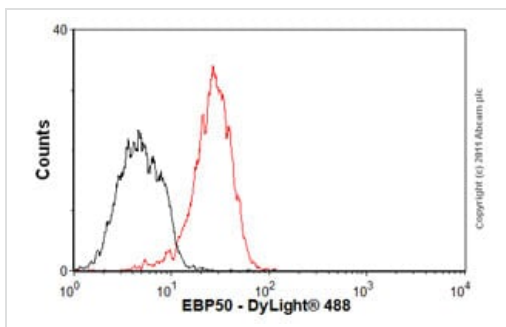
Lane 3 : Caco 2 (Human colonic carcinoma cell line) Whole Cell Lysate

Lysates/proteins at 10 μg per lane.

Secondary

All lanes : Goat polyclonal to Mouse IgG - H&L - Pre-Adsorbed (HRP) at 1/3000 dilution

Observed band size: 48 kDa



Flow Cytometry - Anti-EBP50/NHERF-1 antibody [EBP-10] (ab9526)

Overlay histogram showing HepG2 cells stained with ab9526 (red line). The cells were fixed with 80% methanol (5 min) and then permeabilized with 0.1% PBS-Tween for 20 min. The cells were then incubated in 1x PBS / 10% normal goat serum / 0.3M glycine to block non-specific protein-protein interactions followed by the antibody (ab9526, 1 $\mu\text{g}/1 \times 10^6$ cells) for 30 min at 22°C. The secondary antibody used was DyLight® 488 goat anti-mouse IgG (H+L) ([ab96879](#)) at 1/500 dilution for 30 min at 22°C. Isotype control antibody (black line) was mouse IgG2b [PLPV219] ([ab91366](#), 2 $\mu\text{g}/1 \times 10^6$ cells) used under the same conditions. Acquisition of >5,000 events was performed.

Please note: All products are "FOR RESEARCH USE ONLY. NOT FOR USE IN DIAGNOSTIC PROCEDURES"

Our Abpromise to you: Quality guaranteed and expert technical support

- Replacement or refund for products not performing as stated on the datasheet
- Valid for 12 months from date of delivery
- Response to your inquiry within 24 hours

- We provide support in Chinese, English, French, German, Japanese and Spanish
- Extensive multi-media technical resources to help you
- We investigate all quality concerns to ensure our products perform to the highest standards

If the product does not perform as described on this datasheet, we will offer a refund or replacement. For full details of the Abpromise, please visit <https://www.abcam.co.jp/abpromise> or contact our technical team.

Terms and conditions

- Guarantee only valid for products bought direct from Abcam or one of our authorized distributors