


Anti-EBP50/NHERF-1 antibody ab3452

★★★★★ [8 Abreviews](#) [42 References](#) [画像数 7](#)

製品の概要

製品名	Anti-EBP50/NHERF-1 antibody
製品の詳細	Rabbit polyclonal to EBP50/NHERF-1
由来種	Rabbit
特異性	Detects EBP50/NHERF-1 from human T84 and Calu3 cells as well as recombinant human protein.
アプリケーション	適用あり: WB, IP, IHC-Fr, ICC, IHC-P
種交差性	交差種: Mouse, Rat, Dog, Human 交差が予測される動物種: Rabbit, Cow, Cynomolgus monkey 
免疫原	Recombinant fragment (His-tag) corresponding to Human EBP50/NHERF-1. All His-tag specific antibody has been removed. Sequence: RSASSDTSEELNSQDSP Run BLAST with Run BLAST with
ポジティブ・コントロール	WB: MCF7, T47D, SK-BR-3, HeLa, HepG2; Caco-2. IHC: mouse airway ICC: T47D cells
特記事項	The Life Science industry has been in the grips of a reproducibility crisis for a number of years. Abcam is leading the way in addressing this with our range of recombinant monoclonal antibodies and knockout edited cell lines for gold-standard validation. Please check that this product meets your needs before purchasing. If you have any questions, special requirements or concerns, please send us an inquiry and/or contact our Support team ahead of purchase. Recommended alternatives for this product can be found below, along with publications, customer reviews and Q&As

製品の特性

製品の状態	Liquid
保存方法	Shipped at 4°C. Store at +4°C short term (1-2 weeks). Upon delivery aliquot. Store at -20°C or -80°C. Avoid freeze / thaw cycle.
バッファー	Preservative: 0.05% Sodium azide Constituents: 0.1% BSA, 99% PBS
精製度	Immunogen affinity purified

ポリ/モノ
アイソタイプ

ポリクローナル
IgG

アプリケーション

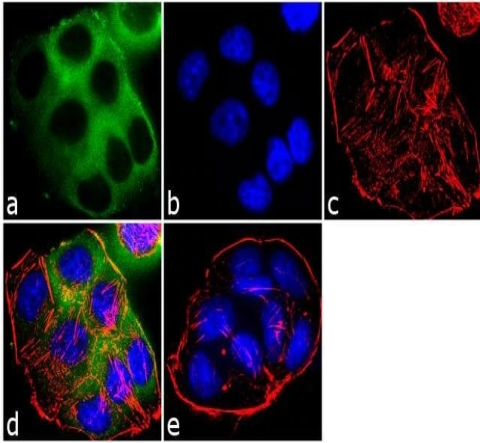
The Abpromise guarantee **Abpromise保証は、次のテスト済みアプリケーションにおけるab3452の使用に適用されます**
アプリケーションノートには、推奨の開始希釈率がありますが、適切な希釈率につきましてはご検討ください。

アプリケーション	Abreviews	特記事項
WB	★★★★★ (4)	Use a concentration of 0.2 - 1 µg/ml. Detects a band of approximately 50 kDa (predicted molecular weight: 50 kDa).
IP		Use at an assay dependent concentration.
IHC-Fr		Use at an assay dependent concentration. PubMed: 15703401
ICC		Use a concentration of 2 µg/ml.
IHC-P		Use a concentration of 10 µg/ml.

ターゲット情報

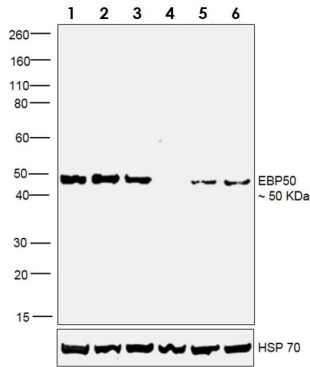
機能	Scaffold protein that connects plasma membrane proteins with members of the ezrin/moesin/radixin family and thereby helps to link them to the actin cytoskeleton and to regulate their surface expression. Necessary for recycling of internalized ADRB2. Was first known to play a role in the regulation of the activity and subcellular location of SLC9A3. Necessary for cAMP-mediated phosphorylation and inhibition of SLC9A3. May enhance Wnt signaling. May participate in HTR4 targeting to microvilli (By similarity). Interacts with MCC.
組織特異性	Detected in liver, kidney, pancreas, prostate, spleen, small intestine and placenta, in particular in the syncytiotrophoblast.
関連疾患	Defects in SLC9A3R1 are the cause of hypophosphatemic nephrolithiasis/osteoporosis type 2 (NPHLOP2) [MIM:612287]. Hypophosphatemia results from idiopathic renal phosphate loss. It contributes to the pathogenesis of hypophosphatemic urolithiasis (formation of urinary calculi) as well to that of hypophosphatemic osteoporosis (bone demineralization).
配列類似性	Contains 2 PDZ (DHR) domains.
翻訳後修飾	Phosphorylated on serine residues.
細胞内局在	Cytoplasm. Apical cell membrane. Endomembrane system. Cell projection > filopodium. Cell projection > ruffle. Cell projection > microvillus. Translocates from the cytoplasm to the apical cell membrane in a PODXL-dependent manner (By similarity). Colocalizes with actin in microvilli-rich apical regions of the syncytiotrophoblast. Found in microvilli, ruffling membrane and filopodia of HeLa cells. Present in lipid rafts of T-cells.

画像



Immunocytochemistry - Anti-EBP50/NHERF-1 antibody (ab3452)

Immunocytochemistry analysis of 4% paraformaldehyde-fixed 0.1% Triton™ X-100 permeabilized T-47D cells staining EBP50/NHERF-1 with ab3452 at 2µg/ml, and Goat anti-Rabbit IgG (H+L) Superclonal™ Secondary Antibody, Alexa Fluor® 488 conjugate at 1/2000 dilution (green). Nuclear counterstain was SlowFade® Gold Antifade Mountant with DAPI (blue), and F-actin was stained with Alexa Fluor® 555 Rhodamine Phalloidin (red). Negative control used no primary antibody.



Western blot - Anti-EBP50/NHERF-1 antibody (ab3452)

All lanes : Anti-EBP50/NHERF-1 antibody (ab3452) at 0.2 µg/ml

Lane 1 : Membrane enriched extracts of MCF7 (human breast adenocarcinoma cell line)

Lane 2 : Membrane enriched extracts of T-47D (Human ductal breast epithelial tumor cell line)

Lane 3 : Membrane enriched extracts of SK-BR-3 (Human mammary gland adenocarcinoma cell line)

Lane 4 : Membrane enriched extracts of MDA-MB-231 (human breast adenocarcinoma cell line)

Lane 5 : Membrane enriched extracts of HeLa (human epithelial cell line from cervix adenocarcinoma)

Lane 6 : Membrane enriched extracts of HepG2 (human liver hepatocellular carcinoma cell line)

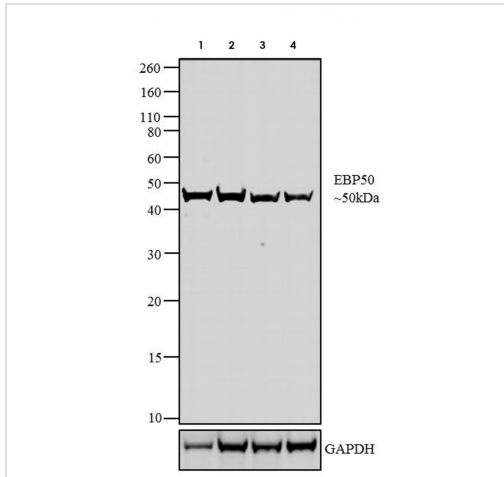
Lysates/proteins at 30 µg per lane.

Secondary

All lanes : Goat anti-Rabbit IgG (H+L) Superclonal™ Recombinant Secondary Antibody, HRP at 1/4000 dilution

Developed using the ECL technique.

Predicted band size: 50 kDa



Western blot - Anti-EBP50/NHERF-1 antibody (ab3452)

All lanes : Anti-EBP50/NHERF-1 antibody (ab3452) at 1 µg/ml

Lane 1 : T-47D (Human ductal breast epithelial tumor cell line) whole cell extract

Lane 2 : MCF7 (human breast adenocarcinoma cell line) whole cell extract

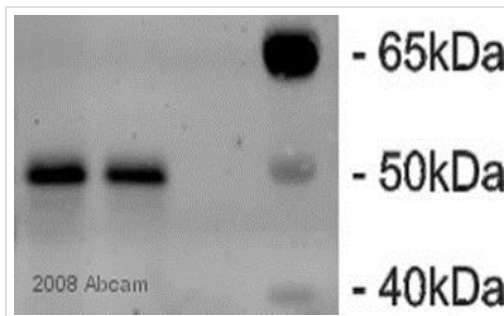
Lane 3 : HepG2 (human liver hepatocellular carcinoma cell line) whole cell extract

Lane 4 : Caco-2 (Human colorectal adenocarcinoma cell line) whole cell extract

Secondary

All lanes : Goat anti-Rabbit IgG (H+L) Superclonal™ Secondary Antibody, HRP conjugate at 1/2500 dilution

Predicted band size: 50 kDa



Western blot - Anti-EBP50/NHERF-1 antibody (ab3452)

This image is courtesy of an anonymous abreview.

All lanes : Anti-EBP50/NHERF-1 antibody (ab3452) at 1/1000 dilution

All lanes : Whole cell lysate prepared from human HepG2 cells

Secondary

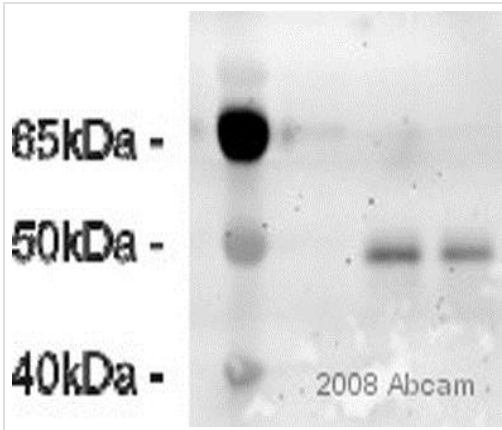
All lanes : HRP-conjugated goat polyclonal to rabbit IgG at 1/20000 dilution

Developed using the ECL technique.

Performed under reducing conditions.

Predicted band size: 50 kDa

Exposure time: 40 seconds



Western blot - Anti-EBP50/NHERF-1 antibody (ab3452)

This image is courtesy of an anonymous abreview.

All lanes : Anti-EBP50/NHERF-1 antibody (ab3452) at 1/1000 dilution

All lanes : Whole tissue lysate prepared from mouse liver

Secondary

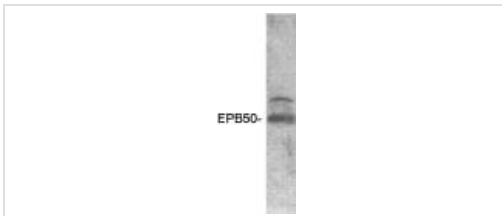
All lanes : HRP-conjugated goat polyclonal to rabbit IgG at 1/20000 dilution

Developed using the ECL technique.

Performed under reducing conditions.

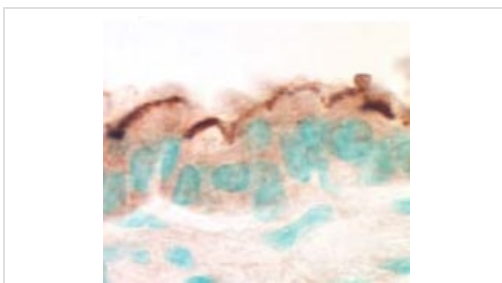
Predicted band size: 50 kDa

Exposure time: 30 seconds



Western blot - Anti-EBP50/NHERF-1 antibody (ab3452)

Western blot detection of recombinant Human EBP50/NHERF-1 using ab3452.



Immunohistochemistry (Formalin/PFA-fixed paraffin-embedded sections) - Anti-EBP50/NHERF-1 antibody (ab3452)

Immunohistochemistry (Formalin/PFA-fixed paraffin-embedded sections) analysis of mouse airway tissue sections labeling EBP50/NHERF-1 with ab3452.

Please note: All products are "FOR RESEARCH USE ONLY. NOT FOR USE IN DIAGNOSTIC PROCEDURES"

Our Abpromise to you: Quality guaranteed and expert technical support

- Replacement or refund for products not performing as stated on the datasheet
- Valid for 12 months from date of delivery
- Response to your inquiry within 24 hours

- We provide support in Chinese, English, French, German, Japanese and Spanish
- Extensive multi-media technical resources to help you
- We investigate all quality concerns to ensure our products perform to the highest standards

If the product does not perform as described on this datasheet, we will offer a refund or replacement. For full details of the Abpromise, please visit <https://www.abcam.co.jp/abpromise> or contact our technical team.

Terms and conditions

- Guarantee only valid for products bought direct from Abcam or one of our authorized distributors