


Anti-EAAT1 antibody [EPR12686] ab181036

リコンビナント **RabMAb**

★★★★★ **3 Abreviews** **7 References** 画像数 13

製品の概要

製品名	Anti-EAAT1 antibody [EPR12686]
製品の詳細	Rabbit monoclonal [EPR12686] to EAAT1
由来種	Rabbit
特異性	Unsuitable for human ICC/IF.
アプリケーション	適用あり: IHC-P, WB, ICC/IF
種交差性	交差種: Mouse, Rat, Human 交差が予測される動物種: Monkey 
免疫原	Synthetic peptide. This information is proprietary to Abcam and/or its suppliers.
ポジティブ・コントロール	WB: Mouse brain, rat brain and human cerebellum lysates. IHC-P: Human , Mouse and Rat cerebral cortex tissue sections. ICC/IF: Mouse and rat primary neural / glia cells.
特記事項	<p>This product is a recombinant monoclonal antibody, which offers several advantages including:</p> <ul style="list-style-type: none"> - High batch-to-batch consistency and reproducibility - Improved sensitivity and specificity - Long-term security of supply - Animal-free production <p>For more information see here.</p> <p>Our RabMAb[®] technology is a patented hybridoma-based technology for making rabbit monoclonal antibodies. For details on our patents, please refer to RabMAb[®] patents.</p>

製品の特性

製品の状態	Liquid
保存方法	Shipped at 4°C. Store at +4°C short term (1-2 weeks). Upon delivery aliquot. Store at -20°C long term. Avoid freeze / thaw cycle.
バッファー	Preservative: 0.01% Sodium azide Constituents: 40% Glycerol, 59% PBS, 0.05% BSA
精製度	Protein A purified
ポリ/モノ	モノクローナル
クローン名	EPR12686

アイソタイプlgG

アプリケーション

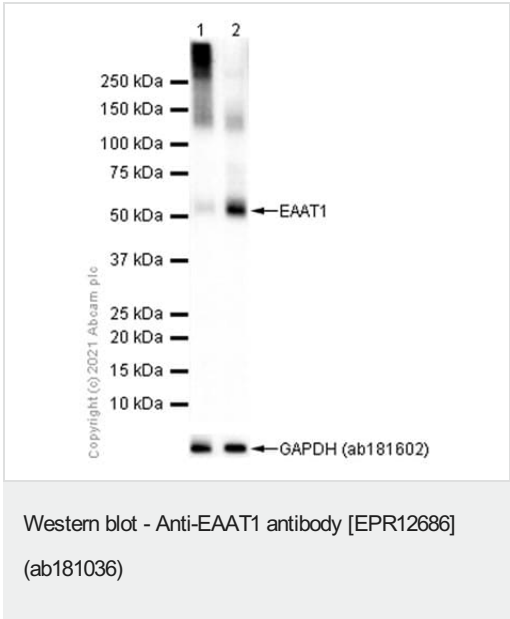
The Abpromise guarantee **Abpromise保証は、次のテスト済みアプリケーションにおけるab181036の使用に適用されます**
アプリケーションノートには、推奨の開始希釈率がありますが、適切な希釈率につきましてはご検討ください。

アプリケーション	Abreviews	特記事項
IHC-P		1/50 - 1/1000. Perform heat mediated antigen retrieval with citrate buffer pH 6 before commencing with IHC staining protocol.
WB		1/1000 - 1/10000. Predicted molecular weight: 59 kDa.
ICC/IF		1/50.

ターゲット情報

機能	Transports L-glutamate and also L- and D-aspartate. Essential for terminating the postsynaptic action of glutamate by rapidly removing released glutamate from the synaptic cleft. Acts as a symport by cotransporting sodium.
組織特異性	Highly expressed in cerebellum, but also found in frontal cortex, hippocampus and basal ganglia.
関連疾患	Defects in SLC1A3 are the cause of episodic ataxia type 6 (EA6) [MIM:612656]. EA6 is characterized by episodic ataxia, seizures, migraine and alternating hemiplegia.
配列類似性	Belongs to the sodium:dicarboxylate (SDF) symporter (TC 2.A.23) family. SLC1A3 subfamily.
翻訳後修飾	Glycosylated.
細胞内局在	Membrane.

画像



All lanes : Anti-EAAT1 antibody [EPR12686] (ab181036) at 1/5000 dilution

Lane 1 : Mouse brain lysate boiled
Lane 2 : Mouse brain lysate unboiled

Lysates/proteins at 15 µg per lane.

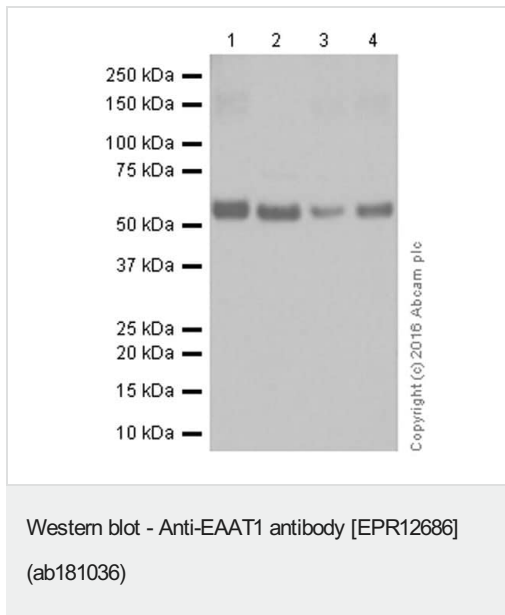
Secondary
All lanes : Goat Anti-Rabbit IgG H&L (HRP) (**ab97051**) at 1/20000 dilution

Predicted band size: 59 kDa

Exposure time: 10 seconds

Blocking and diluting buffer and concentration: 5% NFDM/TBST.

We recommend not to boil the samples after lysis to get desired WB results.



All lanes : Anti-EAAT1 antibody [EPR12686] (ab181036) at 1/5000 dilution

Lane 1 : Mouse brain

Lane 2 : Mouse hippocampus

Lane 3 : Rat hippocampus

Lane 4 : Rat brain

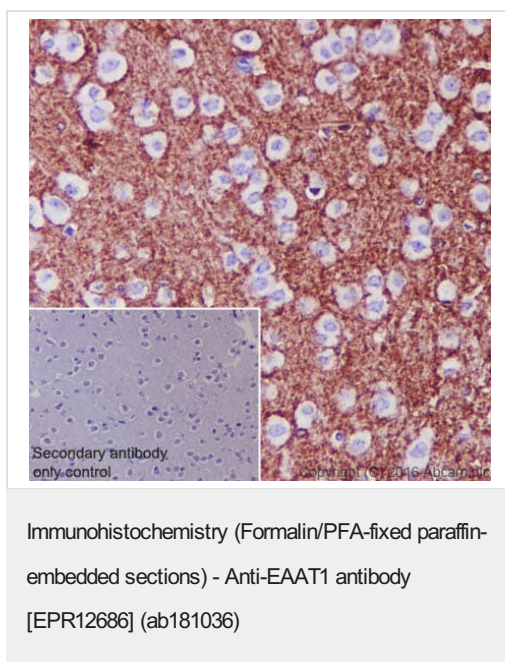
Lysates/proteins at 20 µg per lane.

Secondary

All lanes : Anti-Rabbit IgG (HRP), specific to the non-reduced form of IgG at 1/2000 dilution

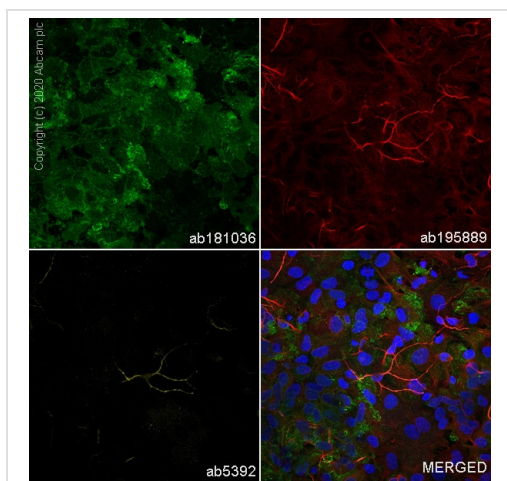
Predicted band size: 59 kDa

Additional bands at: 59 kDa. We are unsure as to the identity of these extra bands.



ab181036 staining EAAT1 in mouse cerebral cortex tissue sections by Immunohistochemistry (IHC-P - paraformaldehyde-fixed, paraffin-embedded sections). Tissue was fixed with paraformaldehyde and antigen retrieval was by heat mediation in a EDTA buffer. Samples were incubated with primary antibody at a dilution of 1/1000. A goat anti-rabbit IgG H&L (HRP) [ab97051](#) was used as the secondary antibody at 1/500.

Negative control 1: PBS in place of primary antibody.

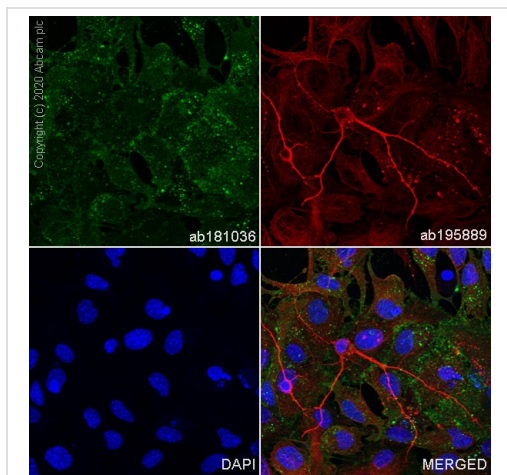


Immunocytochemistry/ Immunofluorescence - Anti-EAAT1 antibody [EPR12686] (ab181036)

Immunofluorescent analysis of 4% Paraformaldehyde-fixed, 0.1% TritonX-100 permeabilized rat primary neural / glia cells labelling EAAT1 with ab181036 at 1/50 dilution, followed by **ab150077** Goat Anti-Rabbit IgG H&L (Alexa Fluor® 488) antibody at 1/1000 2 ug/ml dilution (Green). Confocal image showing positive staining in rat primary glia cell. Confocal scanning Z step was set as 0.3 µm followed by image processing with maximum Z projection.

ab195889 Anti-alpha Tubulin mouse monoclonal antibody - Microtubule Marker (Alexa Fluor® 594) was used to counterstain tubulin at 1/200 2.5 dilution (Red). The Nuclear counterstain was DAPI (Blue).

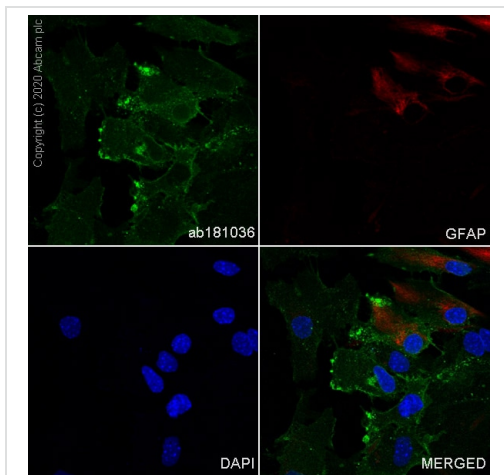
Secondary antibody only control: Secondary antibody is **ab150077** Goat Anti-Rabbit IgG H&L (Alexa Fluor® 488) at 1000 2 ug/ml dilution.



Immunocytochemistry/ Immunofluorescence - Anti-EAAT1 antibody [EPR12686] (ab181036)

Immunofluorescent analysis of 4% Paraformaldehyde-fixed, 0.1% TritonX-100 permeabilized mouse primary neural / glia cells labelling EAAT1 with ab181036 at 1/50 dilution, followed by **ab150077** Goat Anti-Rabbit IgG H&L (Alexa Fluor® 488) antibody at 1/1000 2 ug/ml dilution (Green). Confocal image showing positive staining in mouse primary glia cell. Confocal scanning Z step was set as 0.3 µm followed by image processing with maximum Z projection. **ab195889** Anti-alpha Tubulin mouse monoclonal antibody - Microtubule Marker (Alexa Fluor® 594) was used to counterstain tubulin at 1/200 2.5 dilution (Red). The Nuclear counterstain was DAPI (Blue).

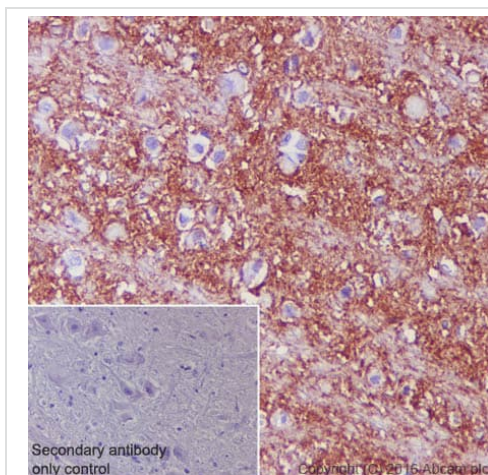
Secondary antibody only control: Secondary antibody is **ab150077** Goat Anti-Rabbit IgG H&L (Alexa Fluor® 488) at 1000 2 ug/ml dilution.



Immunocytochemistry/ Immunofluorescence - Anti-EAAT1 antibody [EPR12686] (ab181036)

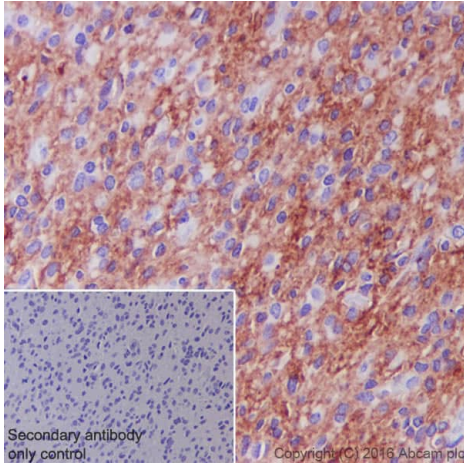
Immunofluorescent analysis of 4% Paraformaldehyde-fixed, 0.1% TritonX-100 permeabilized mouse primary neural / glia cells labelling EAAT1 with ab181036 at 1/50 dilution, followed by **ab150077** Goat Anti-Rabbit IgG H&L (Alexa Fluor® 488) antibody at 1/1000 2 ug/ml dilution (Green). Confocal image showing positive staining in mouse primary neural / glia cell. Confocal scanning Z step was set as 0.3 μ m followed by image processing with maximum Z projection. Anti-Glial Fibrillary Acidic Protein (GFAP) mouse monoclonal antibody was used to counterstain tubulin at 1/100 dilution (Red). The Nuclear counterstain was DAPI (Blue).

Secondary antibody only control: Secondary antibody is **ab150077** Goat Anti-Rabbit IgG H&L (Alexa Fluor® 488) at 1/1000 2 ug/ml dilution.



Immunohistochemistry (Formalin/PFA-fixed paraffin-embedded sections) - Anti-EAAT1 antibody [EPR12686] (ab181036)

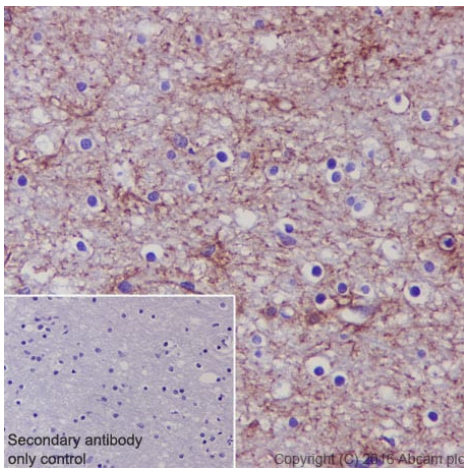
ab181036 staining EAAT1 in rat cerebral cortex tissue sections by Immunohistochemistry (IHC-P - paraformaldehyde-fixed, paraffin-embedded sections). Tissue was fixed with paraformaldehyde and antigen retrieval was by heat mediation in a EDTA buffer. Samples were incubated with primary antibody at a dilution of 1/1000. A goat anti-rabbit IgG H&L (HRP) **ab97051** was used as the secondary antibody at 1/500.



Immunohistochemistry (Formalin/PFA-fixed paraffin-embedded sections) - Anti-EAAT1 antibody
[EPR12686] (ab181036)

ab181036 staining EAAT1 in human glioma tissue sections by Immunohistochemistry (IHC-P - paraformaldehyde-fixed, paraffin-embedded sections). Tissue was fixed with paraformaldehyde and antigen retrieval was by heat mediation in a EDTA buffer. Samples were incubated with primary antibody at a dilution of 1/1000. A goat anti-rabbit IgG H&L (HRP) [ab97051](#) was used as the secondary antibody at 1/500.

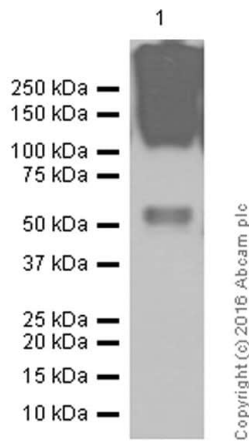
Negative control 1: PBS in place of primary antibody.



Immunohistochemistry (Formalin/PFA-fixed paraffin-embedded sections) - Anti-EAAT1 antibody
[EPR12686] (ab181036)

ab181036 staining EAAT1 in human cerebral cortex tissue sections by Immunohistochemistry (IHC-P - paraformaldehyde-fixed, paraffin-embedded sections). Tissue was fixed with paraformaldehyde and antigen retrieval was by heat mediation in a EDTA buffer. Samples were incubated with primary antibody at a dilution of 1/1000. A goat anti-rabbit IgG H&L (HRP) [ab97051](#) was used as the secondary antibody at 1/500.

Negative control 1: PBS in place of primary antibody.



Western blot - Anti-EAAT1 antibody [EPR12686]
(ab181036)

Anti-EAAT1 antibody [EPR12686] (ab181036) at 1/5000 dilution +
Human cerebellum at 20 µg

Secondary

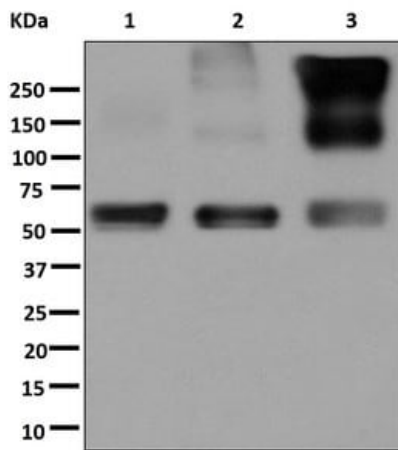
Anti-Rabbit IgG (HRP), specific to the non-reduced form of IgG at
1/2000 dilution

Predicted band size: 59 kDa

Additional bands at: 59 kDa. We are unsure as to the identity of
these extra bands.

Blocking and diluting buffer: 5% NFDM/TBST

The band above (100kDa) is dimer



Western blot - Anti-EAAT1 antibody [EPR12686]
(ab181036)

All lanes : Anti-EAAT1 antibody [EPR12686] (ab181036) at
1/1000 dilution

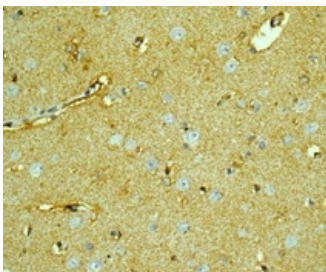
Lane 1 : Mouse brain lysate

Lane 2 : Rat brain lysate

Lane 3 : Human cerebellum lysate

Lysates/proteins at 10 µg per lane.

Predicted band size: 59 kDa



Immunohistochemistry (Formalin/PFA-fixed paraffin-
embedded sections) - Anti-EAAT1 antibody
[EPR12686] (ab181036)

Immunohistochemical staining of EAAT1 in paraffin-embedded
human brain tissue using ab181036 at a 1/50 dilution.

Perform heat mediated antigen retrieval with citrate buffer pH 6
before commencing with IHC staining protocol.

Why choose a recombinant antibody?



Research with confidence
Consistent and reproducible results



Long-term and scalable supply
Recombinant technology



Success from the first experiment
Confirmed specificity



Ethical standards compliant
Animal-free production

Anti-EAAT1 antibody [EPR12686] (ab181036)

Please note: All products are "FOR RESEARCH USE ONLY. NOT FOR USE IN DIAGNOSTIC PROCEDURES"

Our Abpromise to you: Quality guaranteed and expert technical support

- Replacement or refund for products not performing as stated on the datasheet
- Valid for 12 months from date of delivery
- Response to your inquiry within 24 hours
- We provide support in Chinese, English, French, German, Japanese and Spanish
- Extensive multi-media technical resources to help you
- We investigate all quality concerns to ensure our products perform to the highest standards

If the product does not perform as described on this datasheet, we will offer a refund or replacement. For full details of the Abpromise, please visit <https://www.abcam.co.jp/abpromise> or contact our technical team.

Terms and conditions

- Guarantee only valid for products bought direct from Abcam or one of our authorized distributors