


# Anti-E2F8 antibody ab109596

**12 References**   **画像数 2**

### 製品の概要

製品名	Anti-E2F8 antibody
製品の詳細	Rabbit polyclonal to E2F8
由来種	Rabbit
アプリケーション	<b>適用あり:</b> WB, IP
種交差性	<b>交差種:</b> Mouse, Human <b>交差が予測される動物種:</b> Rat, Guinea pig, Dog, Chimpanzee, Rhesus monkey, Gorilla, Chinese hamster, Orangutan 
免疫原	Synthetic peptide, corresponding to a region between residue 817 and 867 of Human E2F8 (NP_078956.2)
ポジティブ・コントロール	WB:293T, HeLa or NIH3T3 whole cell lysate IP: Jurkat whole cell lysate.
特記事項	<p>The Life Science industry has been in the grips of a reproducibility crisis for a number of years. Abcam is leading the way in addressing this with our range of recombinant monoclonal antibodies and knockout edited cell lines for gold-standard validation. Please check that this product meets your needs before purchasing.</p> <p>If you have any questions, special requirements or concerns, please send us an inquiry and/or contact our Support team ahead of purchase. Recommended alternatives for this product can be found below, along with publications, customer reviews and Q&amp;As</p>

### 製品の特性

製品の状態	Liquid
保存方法	Shipped at 4°C. Upon delivery aliquot and store at -20°C. Avoid freeze / thaw cycles.
バッファー	pH: 7 Preservative: 0.09% Sodium azide Constituent: Tris citrate/phosphate
精製度	Immunogen affinity purified
ポリ/モノ	ポリクローナル
アイソタイプ	IgG

### アプリケーション

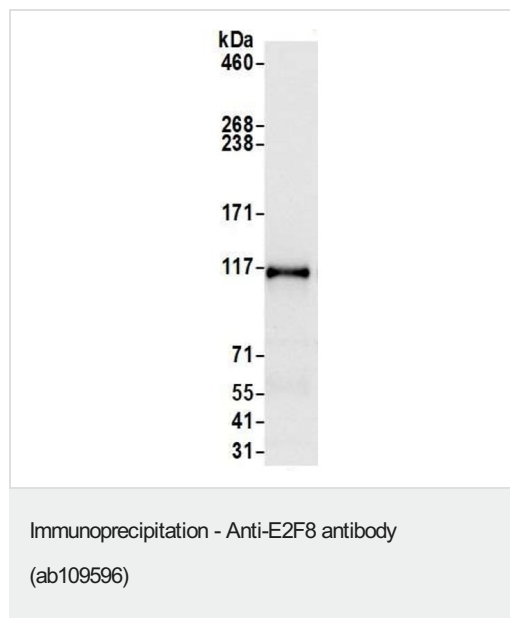
**The Abpromise guarantee**      **Abpromise保証は、**次のテスト済みアプリケーションにおけるab109596の使用に適用されます  
 アプリケーションノートには、推奨の開始希釈率がありますが、適切な希釈率につきましてはご検討ください。

アプリケーション	Abreviews	特記事項
WB		1/2000 - 1/10000. Predicted molecular weight: 94 kDa.
IP		Use at 2-5 µg/mg of lysate.

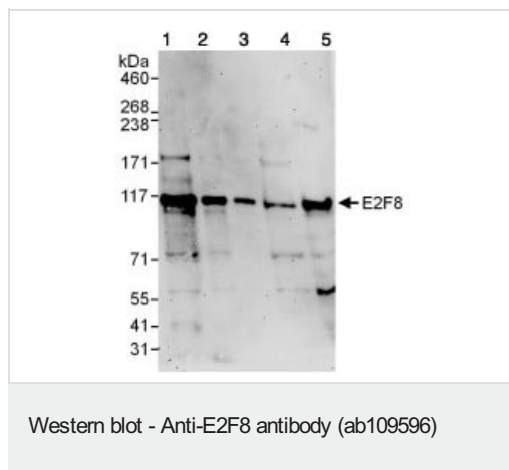
## ターゲット情報

機能	Along with E2F7, inhibitor of E2F-dependent transcription. Binds DNA independently of DP proteins through the E2 recognition site, 5'-TTTC[CG]CGC-3'. Directly represses E2F1 transcription. Appears to regulate a subset of E2F-dependent genes whose products are required for normal cell cycle progression.
配列類似性	Belongs to the E2F/DP family.
ドメイン	Both DNA-binding domains are required for DNA-binding and are proposed to form an intramolecular structure that is similar to the winged helix structure of the E2F-DP heterodimer.
細胞内局在	Nucleus.

## 画像



Detection of E2F8 by Western Blot of Immunoprecipitate.  
 ab109596 at 0.1 µg/mL staining E2F8 in Jurkat whole cell lysate  
 immunoprecipitated using ab109596 at 6µg/mg lysate (1 mg/IP;  
 20% of IP loaded/lane). Detection: Chemiluminescence with  
 exposure time of 3 seconds



**All lanes :** Anti-E2F8 antibody (ab109596) at 0.1 µg/ml

**Lane 1 :** 293T whole cell lysate at 50 µg

**Lane 2 :** 293T whole cell lysate at 15 µg

**Lane 3 :** 293T whole cell lysate at 5 µg

**Lane 4 :** HeLa whole cell lysate at 50 µg

**Lane 5 :** NIH3T3 whole cell lysate at 50 µg

Developed using the ECL technique.

**Predicted band size:** 94 kDa

**Exposure time:** 3 minutes

**Please note:** All products are "FOR RESEARCH USE ONLY. NOT FOR USE IN DIAGNOSTIC PROCEDURES"

### Our Abpromise to you: Quality guaranteed and expert technical support

- Replacement or refund for products not performing as stated on the datasheet
- Valid for 12 months from date of delivery
- Response to your inquiry within 24 hours
- We provide support in Chinese, English, French, German, Japanese and Spanish
- Extensive multi-media technical resources to help you
- We investigate all quality concerns to ensure our products perform to the highest standards

If the product does not perform as described on this datasheet, we will offer a refund or replacement. For full details of the Abpromise, please visit <https://www.abcam.co.jp/abpromise> or contact our technical team.

### Terms and conditions

- Guarantee only valid for products bought direct from Abcam or one of our authorized distributors