

Anti-E2F4 antibody [EPR8259] ab150360

KO 評価済 リコンビナント RabMAb

★★★★☆ 3 Abreviews 6 References 画像数 9

製品の概要

製品名	Anti-E2F4 antibody [EPR8259]
製品の詳細	Rabbit monoclonal [EPR8259] to E2F4
由来種	Rabbit
アプリケーション	適用あり: WB, IHC-P 適用なし: Flow Cyt, ICC/IF or IP
種交差性	交差種: Human
免疫原	Synthetic peptide within Human E2F4 aa 250-350. The exact sequence is proprietary. Database link: Q16254
ポジティブ・コントロール	WB: HEK293T, K562, Raji, HeLa, and Jurkat (ab7899) cell lysates. IHC-P: Human kidney and lung adenocarcinoma tissues.
特記事項	This product is a recombinant monoclonal antibody, which offers several advantages including: <ul style="list-style-type: none"> - High batch-to-batch consistency and reproducibility - Improved sensitivity and specificity - Long-term security of supply - Animal-free production For more information see here . Our RabMAb [®] technology is a patented hybridoma-based technology for making rabbit monoclonal antibodies. For details on our patents, please refer to RabMAb[®] patents .

製品の特性

製品の状態	Liquid
保存方法	Shipped at 4°C. Upon delivery aliquot and store at -20°C. Avoid freeze / thaw cycles.
バッファー	pH: 7.2 Preservative: 0.01% Sodium azide Constituents: 9% PBS, 40% Glycerol (glycerin, glycerine), 0.05% BSA, 50% Tissue culture supernatant
精製度	Protein A purified
ポリ/モノ	モノクローナル
クローン名	EPR8259

アイソタイプ

IgG

アプリケーション

The Abpromise guarantee Abpromise保証は、 次のテスト済みアプリケーションにおけるab150360の使用に適用されます
アプリケーションノートには、推奨の開始希釈率がありますが、適切な希釈率につきましてはご検討ください。

アプリケーション	Abreviews	特記事項
WB	★★★★☆ (2)	1/1000 - 1/10000. Detects a band of approximately 60 kDa (predicted molecular weight: 44 kDa).
IHC-P		1/250 - 1/500. Perform heat mediated antigen retrieval with citrate buffer pH 6 before commencing with IHC staining protocol.

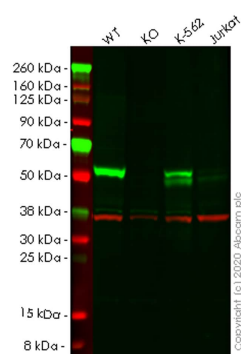
追加情報

Is unsuitable for Flow Cyt, ICC/IF or IP.

ターゲット情報

機能	Transcription activator that binds DNA cooperatively with DP proteins through the E2 recognition site, 5'-TTTC[CG]CGC-3' found in the promoter region of a number of genes whose products are involved in cell cycle regulation or in DNA replication. The DRTF1/E2F complex functions in the control of cell-cycle progression from G1 to S phase. E2F-4 binds with high affinity to RBL1 and RBL2. In some instances, can also bind RB protein.
組織特異性	Found in all tissue examined including heart, brain, placenta, lung, liver, skeletal muscle, kidney and pancreas.
配列類似性	Belongs to the E2F/DP family.
発生段階	Present in the growth-arrested state, its abundance does not change significantly as cells move into and through the cell cycle.
翻訳後修飾	Differentially phosphorylated in vivo.
細胞内局在	Nucleus.

画像



Western blot - Anti-E2F4 antibody [EPR8259]
(ab150360)

All lanes : Anti-E2F4 antibody [EPR8259] (ab150360) at 1/1000 dilution

Lane 1 : Wild-type HEK293T cell lysate

Lane 2 : E2F4 knockout HEK293T cell lysate

Lane 3 : K-562 cell lysate

Lane 4 : Jurkat cell lysate

Lysates/proteins at 20 µg per lane.

Secondary

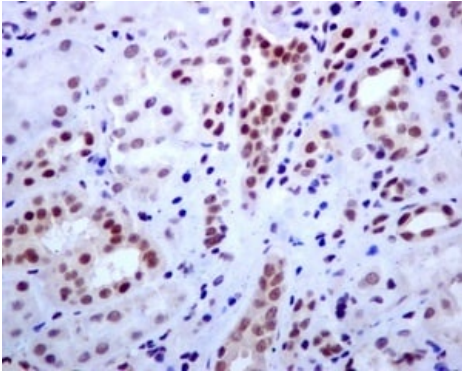
All lanes : Goat anti-Rabbit IgG H&L (IRDye® 800CW) preadsorbed ([ab216773](#)) at 1/10000 dilution

Predicted band size: 44 kDa

Observed band size: 60 kDa

Lanes 1-4: Merged signal (red and green). Green - ab150360 observed at 60 kDa. Red - loading control [ab8245](#) observed at 36 kDa.

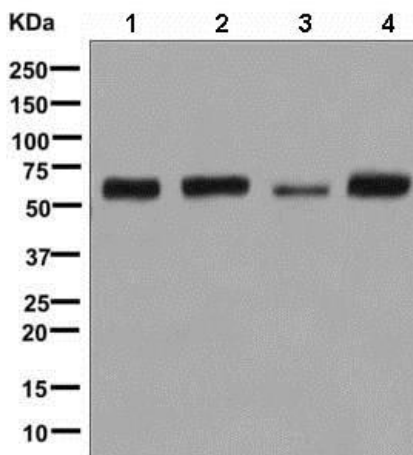
ab150360 Anti-E2F4 antibody [EPR8259] was shown to specifically react with E2F4 in wild-type HEK293T cells. Loss of signal was observed when knockout cell line [ab266119](#) (knockout cell lysate [ab257932](#)) was used. Wild-type and E2F4 knockout samples were subjected to SDS-PAGE. ab150360 and Anti-GAPDH antibody [6C5] - Loading Control ([ab8245](#)) were incubated at room temperature for 2.5 hours at 1 in 1000 dilution and 1 in 20000 dilution respectively. Blots were developed with Goat anti-Rabbit IgG H&L (IRDye® 800CW) preadsorbed ([ab216773](#)) and Goat anti-Mouse IgG H&L (IRDye® 680RD) preadsorbed ([ab216776](#)) secondary antibodies at 1 in 20000 dilution for 1 hour at room temperature before imaging.



Immunohistochemistry (Formalin/PFA-fixed paraffin-embedded sections) - Anti-E2F4 antibody [EPR8259] (ab150360)

Immunohistochemical analysis of paraffin embedded Human kidney tissue labelling E2F4 with ab150360 antibody at a dilution of 1/250.

Perform heat mediated antigen retrieval with citrate buffer pH 6 before commencing with IHC staining protocol.



Western blot - Anti-E2F4 antibody [EPR8259] (ab150360)

All lanes : Anti-E2F4 antibody [EPR8259] (ab150360) at 1/1000 dilution

Lane 1 : K562 cell lysate

Lane 2 : Raji cell lysate

Lane 3 : HeLa cell lysate

Lane 4 : Jurkat cell lysate

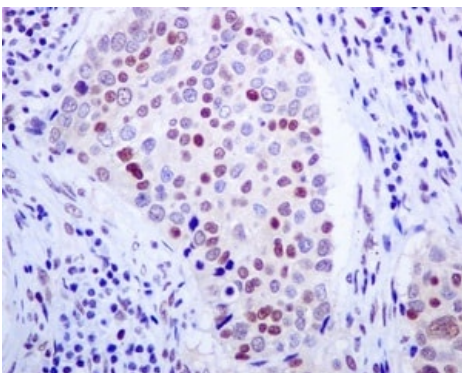
Lysates/proteins at 10 µg per lane.

Secondary

All lanes : HRP labelled goat anti-rabbit at 1/2000 dilution

Predicted band size: 44 kDa

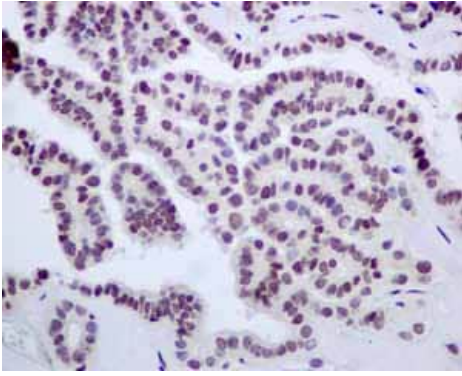
Observed band size: 60 kDa



Immunohistochemistry (Formalin/PFA-fixed paraffin-embedded sections) - Anti-E2F4 antibody [EPR8259] (ab150360)

Immunohistochemical analysis of paraffin embedded Human lung adenocarcinoma tissue labelling E2F4 with ab150360 antibody at a dilution of 1/250.

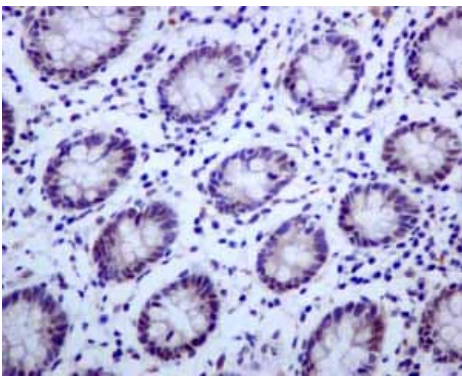
Perform heat mediated antigen retrieval with citrate buffer pH 6 before commencing with IHC staining protocol.



Immunohistochemistry (Formalin/PFA-fixed paraffin-embedded sections) - Anti-E2F4 antibody [EPR8259] (ab150360)

Immunohistochemical analysis of paraffin embedded Human Thyroid gland papillary carcinoma tissue using ab150360 showing +ve staining.

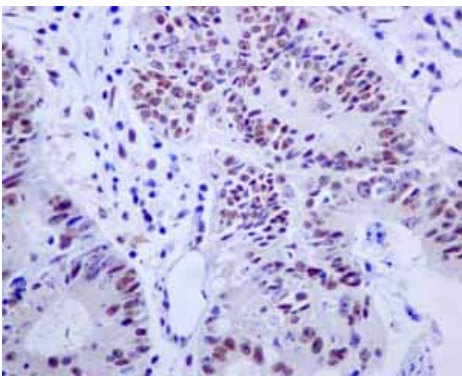
Perform heat mediated antigen retrieval with citrate buffer pH 6 before commencing with IHC staining protocol.



Immunohistochemistry (Formalin/PFA-fixed paraffin-embedded sections) - Anti-E2F4 antibody [EPR8259] (ab150360)

Immunohistochemical analysis of paraffin embedded Normal Human Colon tissue using ab150360 showing +ve staining.

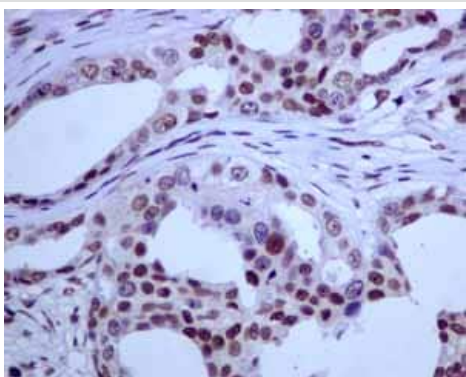
Perform heat mediated antigen retrieval with citrate buffer pH 6 before commencing with IHC staining protocol.



Immunohistochemistry (Formalin/PFA-fixed paraffin-embedded sections) - Anti-E2F4 antibody [EPR8259] (ab150360)

Immunohistochemical analysis of paraffin embedded Human Colonic adenocarcinoma tissue using ab150360 showing +ve staining.

Perform heat mediated antigen retrieval with citrate buffer pH 6 before commencing with IHC staining protocol.



Immunohistochemical analysis of paraffin embedded Human Breast carcinoma tissue using ab150360 showing +ve staining.
Perform heat mediated antigen retrieval with citrate buffer pH 6 before commencing with IHC staining protocol.

Immunohistochemistry (Formalin/PFA-fixed paraffin-embedded sections) - Anti-E2F4 antibody
[EPR8259] (ab150360)

Why choose a recombinant antibody?



Research with confidence
Consistent and reproducible results



Long-term and scalable supply
Recombinant technology



Success from the first experiment
Confirmed specificity



Ethical standards compliant
Animal-free production

Anti-E2F4 antibody [EPR8259] (ab150360)

Please note: All products are "FOR RESEARCH USE ONLY. NOT FOR USE IN DIAGNOSTIC PROCEDURES"

Our Abpromise to you: Quality guaranteed and expert technical support

- Replacement or refund for products not performing as stated on the datasheet
- Valid for 12 months from date of delivery
- Response to your inquiry within 24 hours
- We provide support in Chinese, English, French, German, Japanese and Spanish
- Extensive multi-media technical resources to help you
- We investigate all quality concerns to ensure our products perform to the highest standards

If the product does not perform as described on this datasheet, we will offer a refund or replacement. For full details of the Abpromise, please visit <https://www.abcam.co.jp/abpromise> or contact our technical team.

Terms and conditions

- Guarantee only valid for products bought direct from Abcam or one of our authorized distributors