


Anti-DYRK3 antibody ab96617

面格新 1

医薬用外劇物

製品の概要

製品名	Anti-DYRK3 antibody
製品の詳細	Rabbit polyclonal to DYRK3
由来種	Rabbit
アプリケーション	適用あり: WB
種交差性	交差種: Human 交差が予測される動物種: Mouse, Rat, Cow 
免疫原	Recombinant protein fragment corresponding to a region within amino acids 243 and 542 of DYRK3.
ポジティブ・コントロール	Raji cell lysate.
特記事項	<p>The Life Science industry has been in the grips of a reproducibility crisis for a number of years. Abcam is leading the way in addressing this with our range of recombinant monoclonal antibodies and knockout edited cell lines for gold-standard validation. Please check that this product meets your needs before purchasing.</p> <p>If you have any questions, special requirements or concerns, please send us an inquiry and/or contact our Support team ahead of purchase. Recommended alternatives for this product can be found below, along with publications, customer reviews and Q&As</p>

製品の特性

製品の状態	Liquid
保存方法	Shipped at 4°C. Upon delivery aliquot and store at -20°C or -80°C. Avoid repeated freeze / thaw cycles.
バッファー	pH: 7.00 Preservative: 0.01% Thimerosal (merthiolate) Constituents: 1.21% Tris, 0.75% Glycine, 10% Glycerol (glycerin, glycerine)
精製度	Immunogen affinity purified
ポリ/モノ	ポリクローナル
アイソタイプ	IgG

アプリケーション

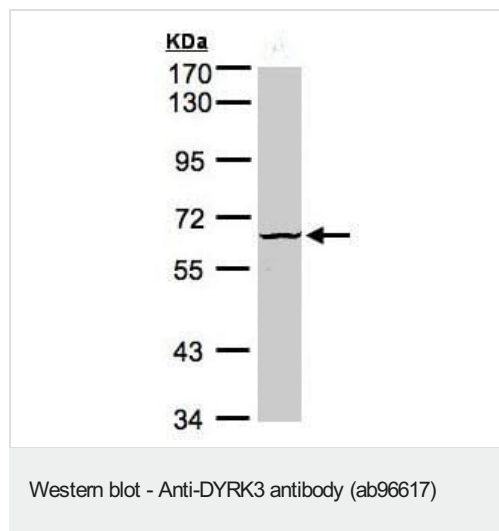
The Abpromise guarantee Abpromise保証は、次のテスト済みアプリケーションにおけるab96617の使用に適用されます
アプリケーションノートには、推奨の開始希釈率がありますが、適切な希釈率につきましてはご確認ください。

アプリケーション	Abreviews	特記事項
WB		1/500 - 1/3000. Predicted molecular weight: 66 kDa.

ターゲット情報

機能	Negative regulator of EPO-dependent erythropoiesis, may place an upper limit on red cell production during stress erythropoiesis. Inhibits cell death due to cytokine withdrawal in hematopoietic progenitor cells. May act by regulating CREB/CRE signaling.
組織特異性	Isoform 1 and isoform 2 are highly expressed in testis and in hematopoietic tissue such as fetal liver, and bone marrow. Isoform 2 is the predominant form in testis. Isoform 1 is the predominant form in fetal liver and bone marrow. Isoform 1 and isoform 2 are present at low levels in heart, pancreas, lymph node, and thymus.
配列類似性	Belongs to the protein kinase superfamily. CMGC Ser/Thr protein kinase family. MNB/DYRK subfamily. Contains 1 protein kinase domain.
翻訳後修飾	Autophosphorylated on tyrosine residues.
細胞内局在	Nucleus.

画像



Anti-DYRK3 antibody (ab96617) at 1/1000 dilution + Raji whole cell lysate at 30 µg

Predicted band size: 66 kDa

7.5% SDS Page

Please note: All products are "FOR RESEARCH USE ONLY. NOT FOR USE IN DIAGNOSTIC PROCEDURES"

Our Abpromise to you: Quality guaranteed and expert technical support

- Replacement or refund for products not performing as stated on the datasheet

- Valid for 12 months from date of delivery
- Response to your inquiry within 24 hours
- We provide support in Chinese, English, French, German, Japanese and Spanish
- Extensive multi-media technical resources to help you
- We investigate all quality concerns to ensure our products perform to the highest standards

If the product does not perform as described on this datasheet, we will offer a refund or replacement. For full details of the Abpromise, please visit <https://www.abcam.co.jp/abpromise> or contact our technical team.

Terms and conditions

- Guarantee only valid for products bought direct from Abcam or one of our authorized distributors