


Anti-Dynamin 2 antibody ab65556

★★★★★ [2 Abreviews](#) [13 References](#) [画像数 3](#)

製品の概要

製品名	Anti-Dynamin 2 antibody
製品の詳細	Rabbit polyclonal to Dynamin 2
由来種	Rabbit
特異性	Replenishment batches of our polyclonal antibody, ab65556 are tested in WB. Previous batches were additionally validated in ICC/IF and IP. These applications are still expected to work and are covered by our Abpromise guarantee. You may also be interested in our alternative recombinant antibody, ab151555 .
アプリケーション	適用あり: IP, WB, ICC/IF
種交差性	交差種: Mouse, Rat, Human 交差が予測される動物種: Cow, Xenopus laevis, Zebrafish 
免疫原	Synthetic peptide corresponding to Human Dynamin 2 aa 850 to the C-terminus (C terminal) conjugated to keyhole limpet haemocyanin. (Peptide available as ab71849)
特記事項	<p>The Life Science industry has been in the grips of a reproducibility crisis for a number of years. Abcam is leading the way in addressing this with our range of recombinant monoclonal antibodies and knockout edited cell lines for gold-standard validation. Please check that this product meets your needs before purchasing.</p> <p>If you have any questions, special requirements or concerns, please send us an inquiry and/or contact our Support team ahead of purchase. Recommended alternatives for this product can be found below, along with publications, customer reviews and Q&As</p>

製品の特性

製品の状態	Liquid
保存方法	Shipped at 4°C. Store at +4°C short term (1-2 weeks). Upon delivery aliquot. Store at -20°C or -80°C. Avoid freeze / thaw cycle.
バッファー	pH: 7.40 Preservative: 0.02% Sodium azide Constituent: PBS

Batches of this product that have a concentration < 1mg/ml may have BSA added as a stabilising agent. If you would like information about the formulation of a specific lot, please contact our

	scientific support team who will be happy to help.
精製度	Immunogen affinity purified
ポリクローナル	ポリクローナル
アイソタイプ	IgG

アプリケーション

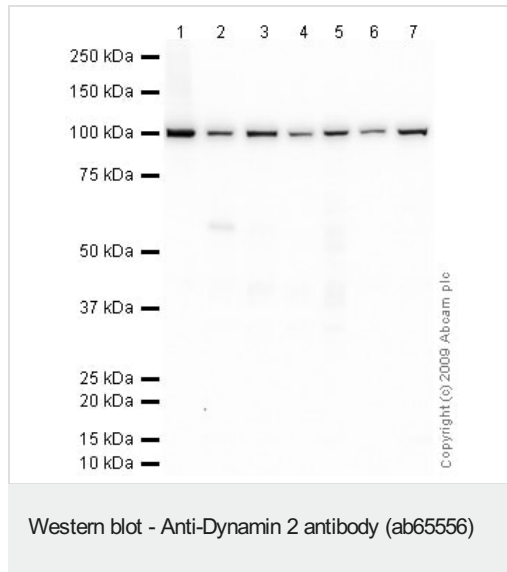
The Abpromise guarantee Abpromise保証は、次のテスト済みアプリケーションにおけるab65556の使用に適用されます
 アプリケーションノートには、推奨の開始希釈率がありますが、適切な希釈率につきましてはご検討ください。

アプリケーション	Abreviews	特記事項
IP		Use at an assay dependent concentration.
WB	★★★★★ (1)	Use a concentration of 1 µg/ml. Detects a band of approximately 100 kDa (predicted molecular weight: 98 kDa).
ICC/IF		Use a concentration of 1 µg/ml.

ターゲット情報

機能	Microtubule-associated force-producing protein involved in producing microtubule bundles and able to bind and hydrolyze GTP. Most probably involved in vesicular trafficking processes, in particular endocytosis.
組織特異性	Ubiquitously expressed.
関連疾患	Defects in DNM2 are a cause of centronuclear myopathy autosomal dominant (ADCNM) [MIM:160150]; also known as autosomal dominant myotubular myopathy. Centronuclear myopathies (CNMs) are congenital muscle disorders characterized by progressive muscular weakness and wasting involving mainly limb girdle, trunk, and neck muscles. It may also affect distal muscles. Weakness may be present during childhood or adolescence or may not become evident until the third decade of life. Ptosis is a frequent clinical feature. CNMs comprise a wide spectrum of phenotypes, ranging from severe neonatal to mild late-onset familial forms. The most prominent histopathologic features include high frequency of centrally located nuclei in muscle fibers not secondary to regeneration, radial arrangement of sarcoplasmic strands around the central nuclei, and predominance and hypotrophy of type 1 fibers. Defects in DNM2 are the cause of Charcot-Marie-Tooth disease dominant intermediate type B (CMTDIB) [MIM:606482]. Charcot-Marie-Tooth disease (CMT) is a clinically and genetically heterogeneous disorder of the peripheral nervous system, characterized by progressive weakness and atrophy, initially of the peroneal muscles and later of the distal muscles of the arms. CMTDIB is a form of Charcot-Marie-Tooth disease characterized by clinical and pathologic features intermediate between demyelinating and axonal peripheral neuropathies, and motor median nerve conduction velocities ranging from 25 to 45 m/sec.
配列類似性	Belongs to the dynamin family. Contains 1 GED domain. Contains 1 PH domain.
細胞内局在	Cytoplasm. Cytoplasm > cytoskeleton. Cell junction > synapse > postsynaptic cell membrane > postsynaptic density. Cell junction > synapse. Microtubule-associated. Also found in the

画像



All lanes : Anti-Dynamin 2 antibody (ab65556) at 1 µg/ml

Lane 1 : Testis (Mouse) Tissue Lysate

Lane 2 : Ramos (Human Burkitt's lymphoma cell line) Whole Cell Lysate

Lane 3 : Jurkat Whole Cell Lysate - Staurosporine Treated (24hr, 500nM)

Lane 4 : HeLa (Human epithelial carcinoma cell line) Whole Cell Lysate

Lane 5 : K562 (Human erythromyeloblastoid leukemia cell line) Whole Cell Lysate

Lane 6 : Rat Thymus Tissue Lysate

Lane 7 : SK N BE (Human neuroblastoma) Whole Cell Lysate

Lysates/proteins at 10 µg per lane.

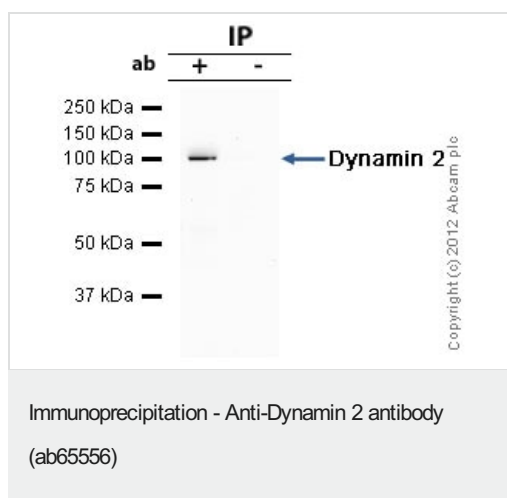
Secondary

All lanes : Goat polyclonal to Rabbit IgG - H&L - Pre-Adsorbed (HRP) at 1/3000 dilution

Performed under reducing conditions.

Predicted band size: 98 kDa

Observed band size: 100 kDa



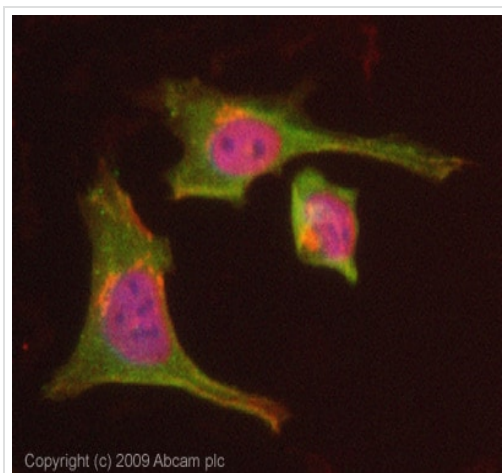
Dynamin 2 was immunoprecipitated using 0.5mg Rat Testis whole tissue extract, 5µg of Rabbit polyclonal to Dynamin 2 and 50µl of protein G magnetic beads (+). No antibody was added to the control (-).

The antibody was incubated under agitation with Protein G beads for 10min, Rat Testis whole tissue extract lysate diluted in RIPA buffer was added to each sample and incubated for a further 10min under agitation.

Proteins were eluted by addition of 40µl SDS loading buffer and incubated for 10min at 70°C; 10µl of each sample was separated on a SDS PAGE gel, transferred to a nitrocellulose membrane, blocked with 5% BSA and probed with ab65556.

Secondary: Mouse monoclonal [SB62a] Secondary Antibody to Rabbit IgG light chain (HRP) ([ab99697](#)).

Band: 100kDa: Dynamin 2.



Immunocytochemistry/ Immunofluorescence - Anti-Dynamin 2 antibody (ab65556)

ICC/IF image of ab65556 stained HeLa cells. The cells were 4% PFA fixed (10 min) and then incubated in 1%BSA / 10% normal Goat serum / 0.3M glycine in 0.1% PBS-Tween for 1h to permeabilise the cells and block non-specific protein-protein interactions. The cells were then incubated with the antibody (ab65556, 1µg/ml) overnight at +4°C. The secondary antibody (green) was Alexa Fluor® 488 Goat anti-Rabbit IgG (H+L) used at a 1/1000 dilution for 1h. Alexa Fluor® 594 WGA was used to label plasma membranes (red) at a 1/200 dilution for 1h. DAPI was used to stain the cell nuclei (blue) at a concentration of 1.43µM. This antibody also gave a positive result in 4% PFA fixed (10 min) Hek293, HepG2, MCF-7 cells at 1µg/ml.

Please note: All products are "FOR RESEARCH USE ONLY. NOT FOR USE IN DIAGNOSTIC PROCEDURES"

Our Abpromise to you: Quality guaranteed and expert technical support

- Replacement or refund for products not performing as stated on the datasheet
- Valid for 12 months from date of delivery
- Response to your inquiry within 24 hours
- We provide support in Chinese, English, French, German, Japanese and Spanish
- Extensive multi-media technical resources to help you
- We investigate all quality concerns to ensure our products perform to the highest standards

If the product does not perform as described on this datasheet, we will offer a refund or replacement. For full details of the Abpromise, please visit <https://www.abcam.co.jp/abpromise> or contact our technical team.

Terms and conditions

- Guarantee only valid for products bought direct from Abcam or one of our authorized distributors