

### Anti-DPM1 antibody [5C5A7] ab113686

★★★★★ **1 Abreviews** **7 References** 画像数 1

#### 製品の概要

製品名	Anti-DPM1 antibody [5C5A7]
製品の詳細	Mouse monoclonal [5C5A7] to DPM1
由来種	Mouse
アプリケーション	<b>適用あり:</b> WB
種交差性	<b>交差種:</b> <i>Saccharomyces cerevisiae</i>
免疫原	Recombinant fragment. This information is considered to be commercially sensitive.
ポジティブ・コントロール	yeast lysate
特記事項	<p>This antibody clone is manufactured by Abcam. If you require a custom buffer formulation or conjugation for your experiments, please contact <a href="mailto:orders@abcam.com">orders@abcam.com</a>.</p> <p>The Life Science industry has been in the grips of a reproducibility crisis for a number of years. Abcam is leading the way in addressing this with our range of recombinant monoclonal antibodies and knockout edited cell lines for gold-standard validation. Please check that this product meets your needs before purchasing.</p> <p>If you have any questions, special requirements or concerns, please send us an inquiry and/or contact our Support team ahead of purchase. Recommended alternatives for this product can be found below, along with publications, customer reviews and Q&amp;As</p> <p>Product was previously marketed under the MitoSciences sub-brand.</p>

#### 製品の特性

製品の状態	Liquid
保存方法	Shipped at 4°C. Store at +4°C.
バッファー	<p>pH: 7.5</p> <p>Preservative: 0.02% Sodium azide</p> <p>Constituent: HEPES buffered saline</p>
特記事項 (精製)	Near homogeneity. The antibody was produced in vitro using hybridomas grown in serum-free medium, and then purified by chemical fractionation.
ポリ/モノ	モノクローナル
クローン名	5C5A7

アイソタイプ IgG1  
軽鎖の種類 kappa

## アプリケーション

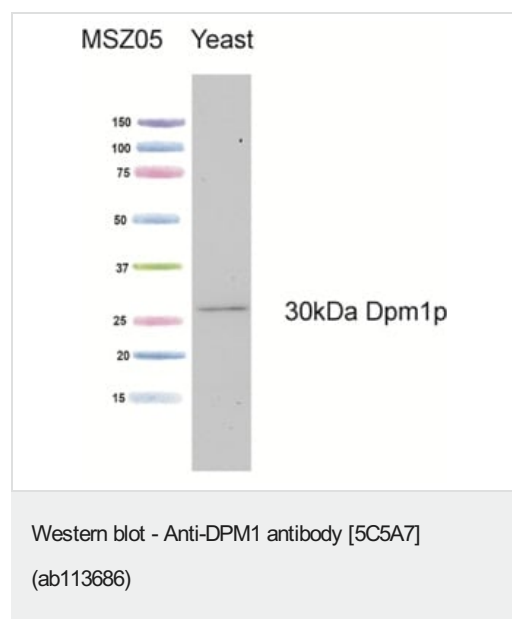
**The Abpromise guarantee** Abpromise保証は、 次のテスト済みアプリケーションにおけるab113686の使用に適用されます  
アプリケーションノートには、推奨の開始希釈率がありますが、適切な希釈率につきましてはご確認ください。

アプリケーション	Abreviews	特記事項
WB	★★★★☆ (1)	Use a concentration of 4 µg/ml. Detects a band of approximately 30 kDa (predicted molecular weight: 30 kDa).

## ターゲット情報

機能	Transfers mannose from GDP-mannose to dolichol monophosphate to form dolichol phosphate mannose (Dol-P-Man) which is the mannosyl donor in pathways leading to N-glycosylation, glycosyl phosphatidylinositol membrane anchoring, and O-mannosylation of proteins.
パスウェイ	Protein modification; protein glycosylation.
関連疾患	Defects in DPM1 are the cause of congenital disorder of glycosylation type 1E (CDG1E) [MIM:608799]. CDGs are metabolic deficiencies in glycoprotein biosynthesis that usually cause severe mental and psychomotor retardation. They are characterized by under-glycosylated serum glycoproteins. CDG1E is an autosomal recessive disorder, characterized by severe developmental delay, hypotonia, seizures, and dysmorphic features.
配列類似性	Belongs to the glycosyltransferase 2 family.
細胞内局在	Endoplasmic reticulum.

## 画像



Anti-DPM1 antibody [5C5A7] (ab113686) + Yeast whole cell lysate  
at 15 µg

**Predicted band size:** 30 kDa

**Please note:** All products are "FOR RESEARCH USE ONLY. NOT FOR USE IN DIAGNOSTIC PROCEDURES"

### **Our Abpromise to you: Quality guaranteed and expert technical support**

---

- Replacement or refund for products not performing as stated on the datasheet
- Valid for 12 months from date of delivery
- Response to your inquiry within 24 hours
  
- We provide support in Chinese, English, French, German, Japanese and Spanish
- Extensive multi-media technical resources to help you
- We investigate all quality concerns to ensure our products perform to the highest standards

If the product does not perform as described on this datasheet, we will offer a refund or replacement. For full details of the Abpromise, please visit <https://www.abcam.co.jp/abpromise> or contact our technical team.

### **Terms and conditions**

---

- Guarantee only valid for products bought direct from Abcam or one of our authorized distributors