

Anti-DPF2/REQ antibody [EPR9206(B)] ab134942

KO 評価済 リコンビナント RabMAb

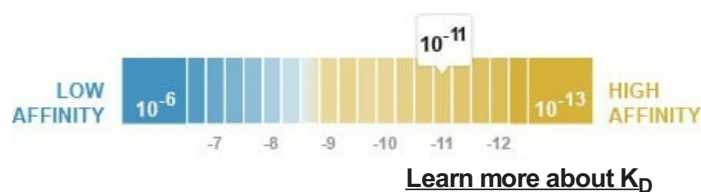
9 References 画像数 13

製品の概要

製品名	Anti-DPF2/REQ antibody [EPR9206(B)]
製品の詳細	Rabbit monoclonal [EPR9206(B)] to DPF2/REQ
由来種	Rabbit
アプリケーション	適用あり: WB, IP, ICC/IF, IHC-P
種交差性	交差種: Mouse, Rat, Human
免疫原	Synthetic peptide corresponding to Human DPF2/REQ.
ポジティブ・コントロール	IHC-P: Human kidney, colon and breast carcinoma tissue; mouse and rat cerebral cortex tissue. WB: A431, HeLa, Jurkat, PC-12, NIH/3T3 and LNCaP cell lysates. ICC: HeLa cells.
特記事項	<p>This product is a recombinant monoclonal antibody, which offers several advantages including:</p> <ul style="list-style-type: none"> - High batch-to-batch consistency and reproducibility - Improved sensitivity and specificity - Long-term security of supply - Animal-free production <p>For more information see here.</p> <p>Our RabMAb[®] technology is a patented hybridoma-based technology for making rabbit monoclonal antibodies. For details on our patents, please refer to RabMAb[®] patents.</p>

製品の特性

製品の状態	Liquid
保存方法	Shipped at 4°C. Store at +4°C short term (1-2 weeks). Upon delivery aliquot. Store at -20°C. Avoid freeze / thaw cycle. Stable for 12 months at -20°C.
解離定数 (K _D 値)	K _D = 5.00 x 10 ⁻¹¹ M



バッファー	pH: 7.2 Preservative: 0.01% Sodium azide
-------	---

	Constituents: 59% PBS, 40% Glycerol (glycerin, glycerine), 0.5% BSA
精製度	Protein A purified
ポリ/モノ	モノクローナル
クローン名	EPR9206(B)
アイソタイプ	IgG

アプリケーション

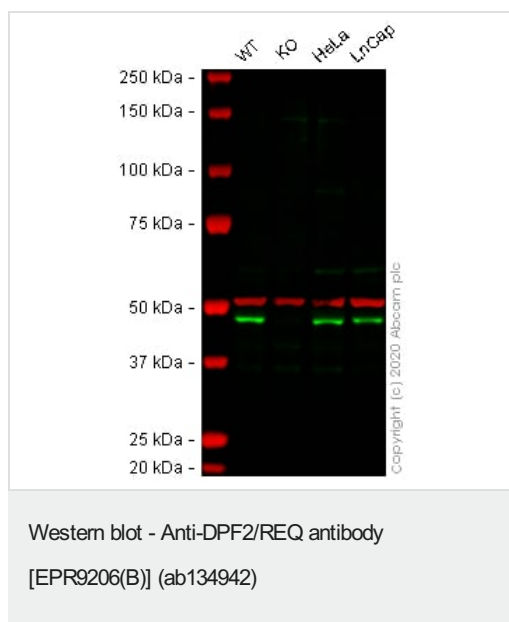
The Abpromise guarantee **Abpromise保証は、**次のテスト済みアプリケーションにおけるab134942の使用に適用されます
アプリケーションノートには、推奨の開始希釈率がありますが、適切な希釈率につきましてはご検討ください。

アプリケーション	Abreviews	特記事項
WB		1/1000 - 1/10000. Predicted molecular weight: 44 kDa.
IP		1/10 - 1/100.
ICC/IF		1/100 - 1/250.
IHC-P		1/100 - 1/250. Perform heat mediated antigen retrieval with citrate buffer pH 6 before commencing with IHC staining protocol. For antigen retrieval: heat up to 98°C, below boiling, and then let cool for 10-20 min. Use of an HRP/AP polymerized secondary antibody is recommended. See <u>IHC antigen retrieval protocols</u> .

ターゲット情報

機能	May be a transcription factor required for the apoptosis response following survival factor withdrawal from myeloid cells. Might also have a role in the development and maturation of lymphoid cells.
組織特異性	Ubiquitous.
配列類似性	Belongs to the requiem/DPF family. Contains 1 C2H2-type zinc finger. Contains 2 PHD-type zinc fingers.
細胞内局在	Nucleus. Cytoplasm. 30% nuclear. 70% cytoplasmic.

画像



All lanes : Anti-DPF2/REQ antibody [EPR9206(B)] (ab134942) at 1/1000 dilution

Lane 1 : Wild-type A-431 (Human epidermoid carcinoma cell line) whole cell lysate

Lane 2 : DPF2 knockout A-431 (Human epidermoid carcinoma cell line) whole cell lysate

Lane 3 : HeLa (Human epithelial cell line from cervix adenocarcinoma) whole cell lysate

Lane 4 : LNCaP (Human prostate cancer cell line) whole cell lysate

Lysates/proteins at 20 µg per lane.

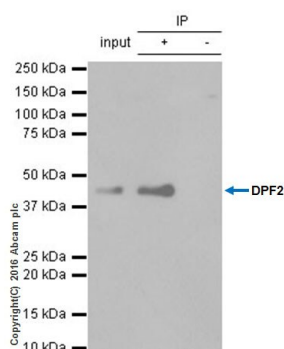
Performed under reducing conditions.

Predicted band size: 44 kDa

Observed band size: 50 kDa

Lanes 1 -4: Merged signal (red and green). Green - ab134942 observed at 50 kDa. Red - loading control, **ab7291** (Mouse anti-Alpha Tubulin [DM1A]) observed at 55kDa.

ab134942 was shown to react with DPF2/REQ in wild-type A431 cells in western blot. Loss of signal was observed when DPF2 knockout sample was used. Wild-type and DPF2 knockout A431 cell lysates were subjected to SDS-PAGE. Membranes were blocked in 3% milk in TBS-T (0.1% Tween®) before incubation with ab134942 and **ab7291** (Mouse anti-Alpha Tubulin [DM1A]) overnight at 4°C at a 1 in 1000 Dilution and a 1 in 20000 dilution respectively. Blots were incubated with Goat anti-Rabbit IgG H&L (IRDye® 800CW) preabsorbed (**ab216773**) and Goat anti-Mouse IgG H&L (IRDye® 680RD) preabsorbed (**ab216776**) secondary antibodies at 1 in 20000 dilution for 1 hour at room temperature before imaging.



Immunoprecipitation - Anti-DPF2/REQ antibody
[EPR9206(B)] (ab134942)

ab134942 (purified) at 1/100 dilution (2µg) immunoprecipitating DPF2/REQ in HeLa (Human epithelial cell line from cervix adenocarcinoma) whole cell lysate.

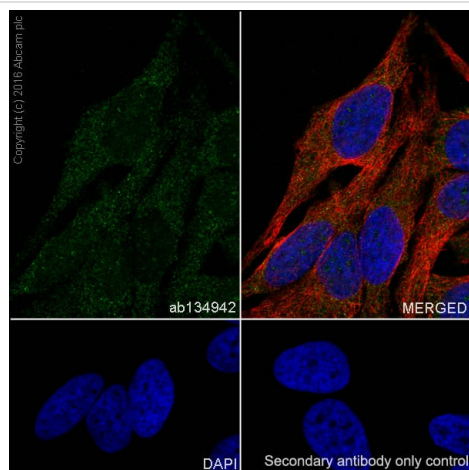
Lane 1 (input): HeLa (Human epithelial cell line from cervix adenocarcinoma) whole cell lysate 10ug

Lane 2 (+): ab134942 + HeLa whole cell lysate

Lane 3 (-): Rabbit monoclonal IgG (**ab172730**) instead of ab134942 in HeLa (Human epithelial cell line from cervix adenocarcinoma) whole cell lysate

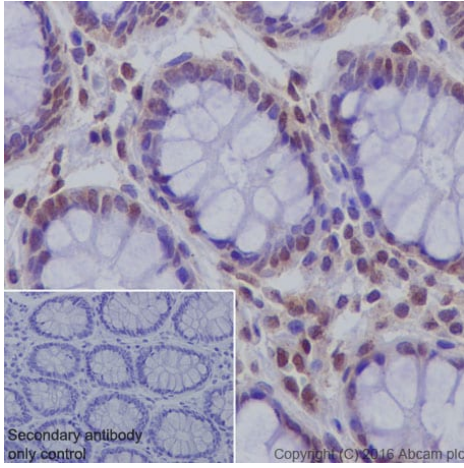
For western blotting, VeriBlot for IP Detection Reagent (HRP) (**ab131366**), was used for detection at 1/1000 dilution.

Blocking and diluting buffer and concentration: 5% NFDM/TBST.



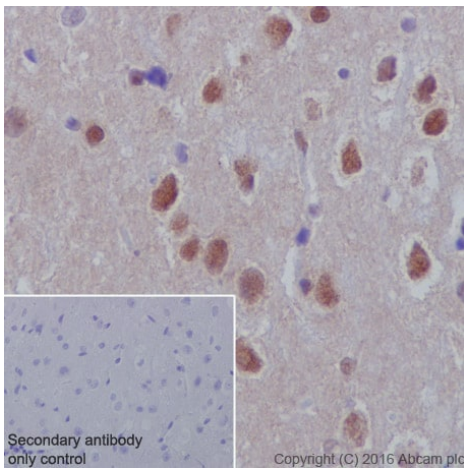
Immunocytochemistry/ Immunofluorescence - Anti-DPF2/REQ antibody [EPR9206(B)] (ab134942)

Immunocytochemistry/ Immunofluorescence analysis of HeLa (Human epithelial cell line from cervix adenocarcinoma) cells labeling DPF2/REQ with purified ab134942 at 1/200 dilution (8.3µg/ml). Cells were fixed in 4% paraformaldehyde and permeabilized with 0.1% tritonX-100. Cells were counterstained with **ab195889**, an anti-alpha Tubulin antibody [DM1A] - Microtubule Marker (Alexa Fluor® 594) at 1/200 (2.5 µg/ml). **ab150077**, a Goat anti-rabbit IgG(Alexa Fluor® 488) was used as the secondary antibody at 1/1000 dilution. DAPI nuclear counterstain. PBS instead of the primary antibody was used as the secondary antibody only control.



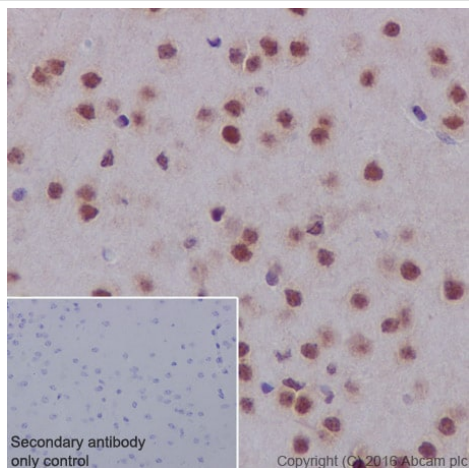
Immunohistochemistry (Formalin/PFA-fixed paraffin-embedded sections) - Anti-DPF2/REQ antibody [EPR9206(B)] (ab134942)

Immunohistochemistry (Formalin/PFA-fixed paraffin-embedded sections) analysis of human colon tissue sections labeling DPF2/REQ with purified ab134942 at 1/200 dilution (8.3 µg/ml). Heat mediated antigen retrieval was performed using EDTA Buffer, pH9. Tissue was counterstained with hematoxylin. **ab97051**, a Goat Anti-Rabbit IgG H&L (HRP) secondary antibody was used at 1/500 dilution. PBS instead of the primary antibody was used as the negative control.



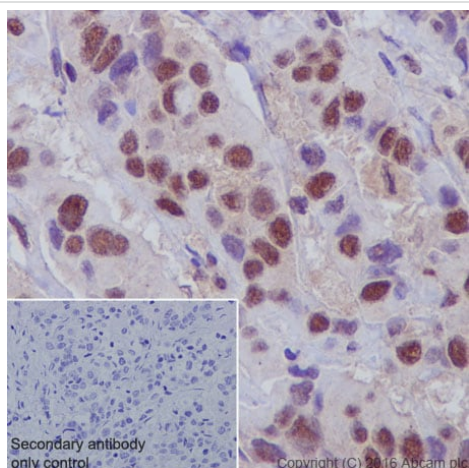
Immunohistochemistry (Formalin/PFA-fixed paraffin-embedded sections) - Anti-DPF2/REQ antibody [EPR9206(B)] (ab134942)

Immunohistochemistry (Formalin/PFA-fixed paraffin-embedded sections) analysis of rat cerebral cortex tissue sections labeling DPF2/REQ with purified ab134942 at 1/200 dilution (8.3 µg/ml). Heat mediated antigen retrieval was performed using EDTA Buffer, pH9. Tissue was counterstained with hematoxylin. **ab97051**, a Goat Anti-Rabbit IgG H&L (HRP) secondary antibody was used at 1/500 dilution. PBS instead of the primary antibody was used as the negative control.



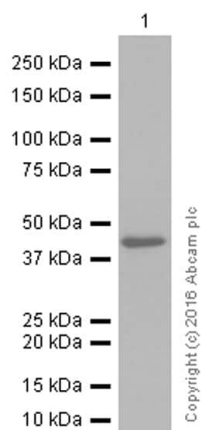
Immunohistochemistry (Formalin/PFA-fixed paraffin-embedded sections) analysis of mouse cerebral cortex tissue sections labeling DPF2/REQ with purified ab134942 at 1/200 dilution (8.3 µg/ml). Heat mediated antigen retrieval was performed using EDTA Buffer, pH9. Tissue was counterstained with hematoxylin. **ab97051**, a Goat Anti-Rabbit IgG H&L (HRP) secondary antibody was used at 1/500 dilution. PBS instead of the primary antibody was used as the negative control.

Immunohistochemistry (Formalin/PFA-fixed paraffin-embedded sections) - Anti-DPF2/REQ antibody [EPR9206(B)] (ab134942)



Immunohistochemistry (Formalin/PFA-fixed paraffin-embedded sections) analysis of human breast carcinoma tissue sections labeling DPF2/REQ with purified ab134942 at 1/200 dilution (8.3 µg/ml). Heat mediated antigen retrieval was performed using EDTA Buffer, pH9. Tissue was counterstained with hematoxylin. **ab97051**, a Goat Anti-Rabbit IgG H&L (HRP) secondary antibody was used at 1/500 dilution. PBS instead of the primary antibody was used as the negative control.

Immunohistochemistry (Formalin/PFA-fixed paraffin-embedded sections) - Anti-DPF2/REQ antibody [EPR9206(B)] (ab134942)



Western blot - Anti-DPF2/REQ antibody
[EPR9206(B)] (ab134942)

Anti-DPF2/REQ antibody [EPR9206(B)] (ab134942) at 1/2000 dilution (purified) + NIH/3T3 (Mouse embryonic fibroblast cell line) whole cell lysate at 20 µg

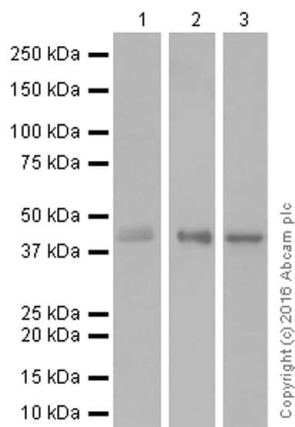
Secondary

Goat Anti-Rabbit IgG H&L (HRP) ([ab97051](#)) at 1/20000 dilution

Predicted band size: 44 kDa

Observed band size: 44 kDa

Blocking and diluting buffer: 5% NFDM/TBST.



Western blot - Anti-DPF2/REQ antibody
[EPR9206(B)] (ab134942)

All lanes : Anti-DPF2/REQ antibody [EPR9206(B)] (ab134942) at 1/1000 dilution (purified)

Lane 1 : PC-12 (Rat adrenal gland pheochromocytoma cell line) whole cell lysate

Lane 2 : HeLa (Human epithelial cell line from cervix adenocarcinoma) whole cell lysate

Lane 3 : LNCaP (Human prostate cancer cell line) whole cell lysate

Lysates/proteins at 20 µg per lane.

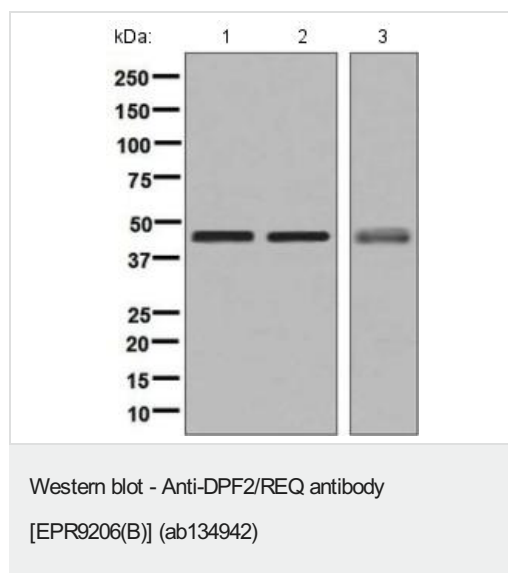
Secondary

All lanes : Goat Anti-Rabbit IgG H&L (HRP) ([ab97051](#)) at 1/20000 dilution

Predicted band size: 44 kDa

Observed band size: 44 kDa

Blocking and diluting buffer: 5% NFDM/TBST.



All lanes : Anti-DPF2/REQ antibody [EPR9206(B)] (ab134942) at 1/1000 dilution (unpurified)

Lane 1 : HeLa cell lysate

Lane 2 : Jurkat cell lysate

Lane 3 : LNCaP cell lysate

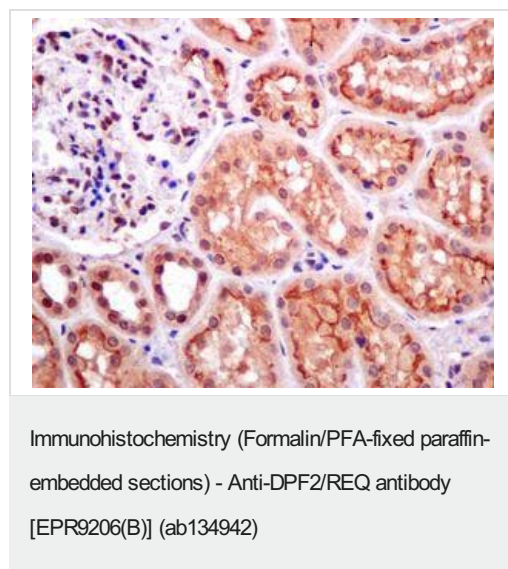
Lysates/proteins at 10 µg per lane.

Secondary

All lanes : Standard HRP labelled goat anti-rabbit at 1/2000 dilution

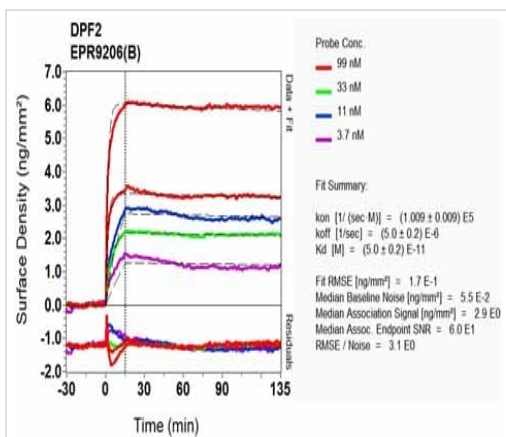
Developed using the ECL technique.

Predicted band size: 44 kDa



Immunohistochemical analysis of paraffin-embedded, formalin-fixed Human kidney tissue, labelling DPF2/REQ using unpurified ab134942 at a 1/100 dilution.

Perform heat mediated antigen retrieval with citrate buffer pH 6 before commencing with IHC staining protocol.



SPR Scanning - Anti-DPF2/REQ antibody
[EPR9206(B)] (ab134942)

Equilibrium dissociation constant (K_D)

Learn more about K_D

[Click here to learn more about \$K_D\$](#)

Why choose a recombinant antibody?



Research with confidence
Consistent and reproducible results



Long-term and scalable supply
Recombinant technology



Success from the first experiment
Confirmed specificity



Ethical standards compliant
Animal-free production

Anti-DPF2/REQ antibody [EPR9206(B)] (ab134942)

Please note: All products are "FOR RESEARCH USE ONLY. NOT FOR USE IN DIAGNOSTIC PROCEDURES"

Our Promise to you: Quality guaranteed and expert technical support

- Replacement or refund for products not performing as stated on the datasheet
- Valid for 12 months from date of delivery
- Response to your inquiry within 24 hours
- We provide support in Chinese, English, French, German, Japanese and Spanish
- Extensive multi-media technical resources to help you
- We investigate all quality concerns to ensure our products perform to the highest standards

If the product does not perform as described on this datasheet, we will offer a refund or replacement. For full details of the Abpromise, please visit <https://www.abcam.co.jp/abpromise> or contact our technical team.

Terms and conditions

- Guarantee only valid for products bought direct from Abcam or one of our authorized distributors