

Anti-DPEP1/MDP antibody ab121308

[2 References](#) [画像数 4](#)

製品の概要

製品名	Anti-DPEP1/MDP antibody
製品の詳細	Rabbit polyclonal to DPEP1/MDP
由来種	Rabbit
アプリケーション	適用あり: WB, IHC-P
種交差性	交差種: Human
免疫原	Recombinant fragment corresponding to Human DPEP1/MDP aa 263-388.
ポジティブ・コントロール	IHC: Human Plasma lysate; Human small intestine tissue.
特記事項	<p>The Life Science industry has been in the grips of a reproducibility crisis for a number of years. Abcam is leading the way in addressing this with our range of recombinant monoclonal antibodies and knockout edited cell lines for gold-standard validation. Please check that this product meets your needs before purchasing.</p> <p>If you have any questions, special requirements or concerns, please send us an inquiry and/or contact our Support team ahead of purchase. Recommended alternatives for this product can be found below, along with publications, customer reviews and Q&As</p>

製品の特性

製品の状態	Liquid
保存方法	Shipped at 4°C. Upon delivery aliquot and store at -20°C. Avoid freeze / thaw cycles.
バッファー	pH: 7.20 Preservative: 0.02% Sodium azide Constituents: 59% PBS, 40% Glycerol (glycerin, glycerine)
精製度	Immunogen affinity purified
ポリ/モノ	ポリクローナル
アイソタイプ	IgG

アプリケーション

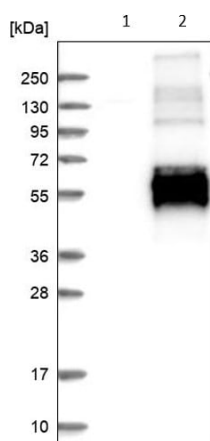
The Abpromise guarantee **Abpromise保証は、次のテスト済みアプリケーションにおけるab121308の使用に適用されます**
アプリケーションノートには、推奨の開始希釈率がありますが、適切な希釈率につきましてはご検討ください。

アプリケーション	Abreviews	特記事項
WB		Use a concentration of 0.04 - 0.4 µg/ml. Predicted molecular weight: 46 kDa.
IHC-P		1/1000 - 1/2500. Perform heat mediated antigen retrieval with citrate buffer pH 6 before commencing with IHC staining protocol.

ターゲット情報

機能	Hydrolyzes a wide range of dipeptides. Implicated in the renal metabolism of glutathione and its conjugates. Converts leukotriene D4 to leukotriene E4; it may play an important role in the regulation of leukotriene activity.
配列類似性	Belongs to the peptidase M19 family.
細胞内局在	Apical cell membrane. Cell projection > microvillus membrane. Brush border membrane.

画像



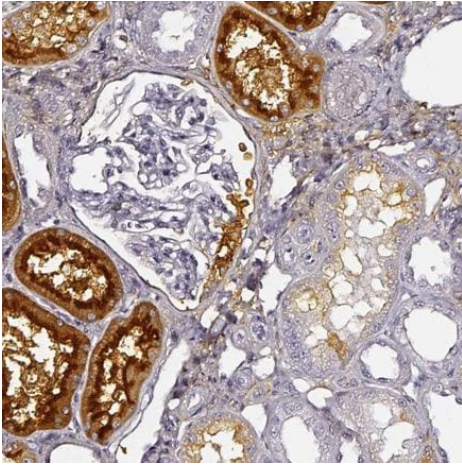
All lanes : Anti-DPEP1/MDP antibody (ab121308) at 0.4 µg/ml

Lane 1 : Control - vector only transfected HEK293T lysate

Lane 2 : DPEP1 over-expression lysate - co-expressed with a C-terminal myc-DDY tag (3.1kDa)

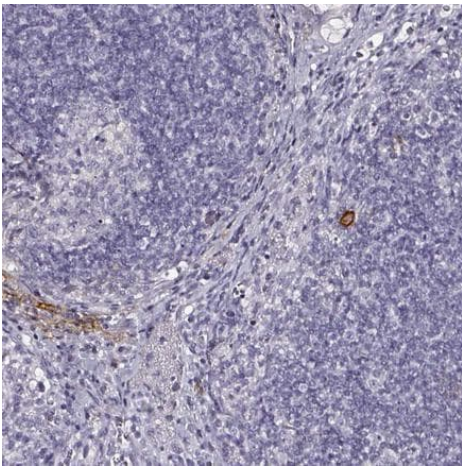
Predicted band size: 46 kDa

Western blot - Anti-DPEP1/MDP antibody
(ab121308)



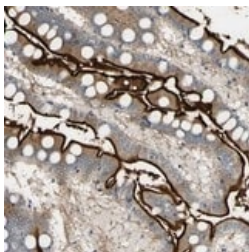
ab121308 at 1/2500 dilution staining DPEP1/MDP in Paraffin-embedded Human kidney tissue by Immunohistochemistry.

Immunohistochemistry (Formalin/PFA-fixed paraffin-embedded sections) - Anti-DPEP1/MDP antibody (ab121308)



ab121308 at 1/2500 dilution staining DPEP1/MDP in Paraffin-embedded Human lymph node tissue by Immunohistochemistry. This shows low expression as expected.

Immunohistochemistry (Formalin/PFA-fixed paraffin-embedded sections) - Anti-DPEP1/MDP antibody (ab121308)



ab121308 at 1/2500 dilution staining DPEP1/MDP in Paraffin-embedded Human small intestine tissue by Immunohistochemistry.

Immunohistochemistry (Formalin/PFA-fixed paraffin-embedded sections) - Anti-DPEP1/MDP antibody (ab121308)

Our Abpromise to you: Quality guaranteed and expert technical support

- Replacement or refund for products not performing as stated on the datasheet
- Valid for 12 months from date of delivery
- Response to your inquiry within 24 hours

- We provide support in Chinese, English, French, German, Japanese and Spanish
- Extensive multi-media technical resources to help you
- We investigate all quality concerns to ensure our products perform to the highest standards

If the product does not perform as described on this datasheet, we will offer a refund or replacement. For full details of the Abpromise, please visit <https://www.abcam.co.jp/abpromise> or contact our technical team.

Terms and conditions

- Guarantee only valid for products bought direct from Abcam or one of our authorized distributors