


# Anti-Dopamine Receptor D3/DRD3 antibody [EPR10148] ab155098

リコンビナント **RabMAb**

**3 Abreviews**   **3 References**   画像数 **2**

### 製品の概要

製品名	Anti-Dopamine Receptor D3/DRD3 antibody [EPR10148]
製品の詳細	Rabbit monoclonal [EPR10148] to Dopamine Receptor D3/DRD3
由来種	Rabbit
アプリケーション	<b>適用あり:</b> WB <b>適用なし:</b> Flow Cyt, ICC/IF, IHC-P or IP
種交差性	<b>交差種:</b> Mouse, Human <b>交差が予測される動物種:</b> Rat 
免疫原	Synthetic peptide. This information is proprietary to Abcam and/or its suppliers.
ポジティブ・コントロール	SH-SY5Y, Human fetal brain and Mouse brain lysates.
特記事項	This product is a recombinant monoclonal antibody, which offers several advantages including: <ul style="list-style-type: none"> <li>- High batch-to-batch consistency and reproducibility</li> <li>- Improved sensitivity and specificity</li> <li>- Long-term security of supply</li> <li>- Animal-free production</li> </ul> For more information <b><a href="#">see here</a></b> . Our RabMAb <sup>®</sup> technology is a patented hybridoma-based technology for making rabbit monoclonal antibodies. For details on our patents, please refer to <b><a href="#">RabMAb<sup>®</sup> patents</a></b> .

### 製品の特性

製品の状態	Liquid
保存方法	Shipped at 4°C. Store at -20°C.
バッファー	pH: 7.2 Preservative: 0.01% Sodium azide Constituents: 9% PBS, 40% Glycerol (glycerin, glycerine), 0.05% BSA, 50% Tissue culture supernatant
精製度	Protein A purified
ポリ/モノ	モノクローナル

クローン名	EPR10148
アイソタイプ	IgG

## アプリケーション

**The Abpromise guarantee**      Abpromise保証は、次のテスト済みアプリケーションにおけるab155098の使用に適用されます  
アプリケーションノートには、推奨の開始希釈率がありますが、適切な希釈率につきましてはご確認ください。

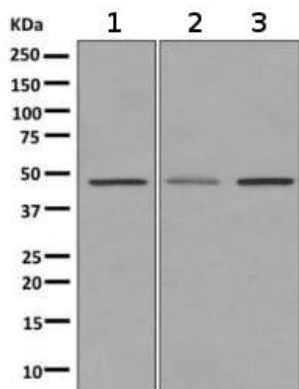
アプリケーション	Abreviews	特記事項
WB		1/1000 - 1/10000. Predicted molecular weight: 44 kDa.

**追加情報** Is unsuitable for Flow Cyt, ICC/IF, IHC-P or IP.

## ターゲット情報

機能	This is one of the five types (D1 to D5) of receptors for dopamine. The activity of this receptor is mediated by G proteins which inhibit adenylyl cyclase. Promotes cell proliferation.
組織特異性	Brain.
関連疾患	Genetic variation in DRD3 is associated with essential tremor hereditary type 1 (ETM1) [MIM:190300]. ETM1 is the most common movement disorder. The main feature is postural tremor of the arms. Head, legs, trunk, voice, jaw, and facial muscles also may be involved. The condition can be aggravated by emotions, hunger, fatigue and temperature extremes, and may cause a functional disability or even incapacitation. Inheritance is autosomal dominant.
配列類似性	Belongs to the G-protein coupled receptor 1 family.
翻訳後修飾	Phosphorylated by GRK4 (GRK4-alpha and GRK4-gamma).
細胞内局在	Cell membrane. Both membrane-bound and scattered in the cytoplasm during basal conditions. Receptor stimulation results in the rapid internalization and sequestration of the receptors at the perinuclear area (5 and 15 minutes), followed by the dispersal of the receptors to the membrane (30 minutes). DRD3 and GRK4 co-localize in lipid rafts of renal proximal tubule cells.

画像



Western blot - Anti-Dopamine Receptor D3/DRD3 antibody [EPR10148] (ab155098)

**All lanes :** Anti-Dopamine Receptor D3/DRD3 antibody [EPR10148] (ab155098) at 1/1000 dilution

**Lane 1 :** SH-SY5Y lysate

**Lane 2 :** Human fetal brain lysate

**Lane 3 :** Mouse brain lysate

Lysates/proteins at 10 µg per lane.

#### Secondary

**All lanes :** Goat anti-rabbit HRP at 1/2000 dilution

**Predicted band size:** 44 kDa

#### Why choose a recombinant antibody?



**Research with confidence**  
Consistent and reproducible results



**Long-term and scalable supply**  
Recombinant technology



**Success from the first experiment**  
Confirmed specificity



**Ethical standards compliant**  
Animal-free production

Anti-Dopamine Receptor D3/DRD3 antibody [EPR10148] (ab155098)

**Please note:** All products are "FOR RESEARCH USE ONLY. NOT FOR USE IN DIAGNOSTIC PROCEDURES"

#### Our Abpromise to you: Quality guaranteed and expert technical support

- Replacement or refund for products not performing as stated on the datasheet
- Valid for 12 months from date of delivery
- Response to your inquiry within 24 hours
- We provide support in Chinese, English, French, German, Japanese and Spanish
- Extensive multi-media technical resources to help you
- We investigate all quality concerns to ensure our products perform to the highest standards

If the product does not perform as described on this datasheet, we will offer a refund or replacement. For full details of the Abpromise, please visit <https://www.abcam.co.jp/abpromise> or contact our technical team.

## Terms and conditions

---

- Guarantee only valid for products bought direct from Abcam or one of our authorized distributors