



# Anti-Dopamine Receptor D3/DRD3 antibody ab42114

★★★★★ [3 Abreviews](#) [14 References](#) [画像数 2](#)

### 製品の概要

製品名	Anti-Dopamine Receptor D3/DRD3 antibody
製品の詳細	Rabbit polyclonal to Dopamine Receptor D3/DRD3
由来種	Rabbit
アプリケーション	<b>適用あり:</b> ELISA, Dot blot, ICC/IF, IP, WB
種交差性	<b>交差種:</b> Mouse, Rat, Human, Recombinant fragment
免疫原	Synthetic peptide corresponding to Dopamine Receptor D3/DRD3. <div>  <a href="#">Run BLAST with ExPASy</a>  <a href="#">Run BLAST with NCBI</a> </div>
特記事項	<p>The Life Science industry has been in the grips of a reproducibility crisis for a number of years. Abcam is leading the way in addressing this with our range of recombinant monoclonal antibodies and knockout edited cell lines for gold-standard validation. Please check that this product meets your needs before purchasing.</p> <p>If you have any questions, special requirements or concerns, please send us an inquiry and/or contact our Support team ahead of purchase. Recommended alternatives for this product can be found below, along with publications, customer reviews and Q&amp;As</p>

### 製品の特性

製品の状態	Liquid
保存方法	Shipped at 4°C. Upon delivery aliquot and store at -20°C. Avoid freeze / thaw cycles.
バッファー	Preservative: 0.02% Sodium azide
精製度	Protein A purified
ポリ/モノ	ポリクローナル
アイソタイプ	IgG

### アプリケーション

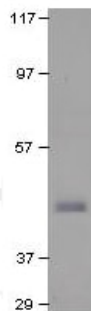
**The Abpromise guarantee**      **Abpromise保証は、** 次のテスト済みアプリケーションにおけるab42114の使用に適用されます  
 アプリケーションノートには、推奨の開始希釈率がありますが、適切な希釈率につきましてはご検討ください。

アプリケーション	Abreviews	特記事項
ELISA		Use at an assay dependent concentration.
Dot blot		Use at an assay dependent concentration.
ICC/IF		Use a concentration of 5 µg/ml.
IP		Use at an assay dependent concentration. 2 Åµl of this antibody will immunoprecipitate 65-80% dopamine recombinant D3 receptor protein from COS1 cells.
WB	★★★★★ (1)	1/1000 - 1/15000. Detects a band of approximately 50 kDa (predicted molecular weight: 50 kDa).

## ターゲット情報

機能	This is one of the five types (D1 to D5) of receptors for dopamine. The activity of this receptor is mediated by G proteins which inhibit adenylyl cyclase. Promotes cell proliferation.
組織特異性	Brain.
関連疾患	Genetic variation in DRD3 is associated with essential tremor hereditary type 1 (ETM1) [MIM:190300]. ETM1 is the most common movement disorder. The main feature is postural tremor of the arms. Head, legs, trunk, voice, jaw, and facial muscles also may be involved. The condition can be aggravated by emotions, hunger, fatigue and temperature extremes, and may cause a functional disability or even incapacitation. Inheritance is autosomal dominant.
配列類似性	Belongs to the G-protein coupled receptor 1 family.
翻訳後修飾	Phosphorylated by GRK4 (GRK4-alpha and GRK4-gamma).
細胞内局在	Cell membrane. Both membrane-bound and scattered in the cytoplasm during basal conditions. Receptor stimulation results in the rapid internalization and sequestration of the receptors at the perinuclear area (5 and 15 minutes), followed by the dispersal of the receptors to the membrane (30 minutes). DRD3 and GRK4 co-localize in lipid rafts of renal proximal tubule cells.

## 画像

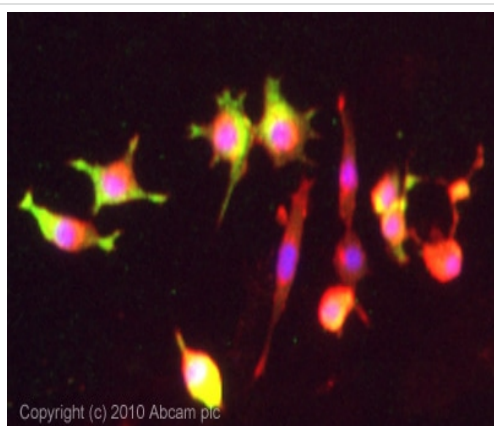


Western blot - Anti-Dopamine Receptor D3/DRD3 antibody (ab42114)

Anti-Dopamine Receptor D3/DRD3 antibody (ab42114) at 1/750 dilution + Dopamine Receptor D3 Positive Control (rat)

**Predicted band size:** 50 kDa

**Observed band size:** 50 kDa



Immunocytochemistry/ Immunofluorescence - Anti-Dopamine Receptor D3/DRD3 antibody (ab42114)

ICC/IF image of ab42114 stained PC12 cells. The cells were 4% formaldehyde fixed (10 min) and then incubated in 1%BSA / 10% normal goat serum / 0.3M glycine in 0.1% PBS-Tween for 1h to permeabilise the cells and block non-specific protein-protein interactions. The cells were then incubated with the antibody (ab42114, 5µg/ml) overnight at +4°C. The secondary antibody (green) was Alexa Fluor® 488 goat anti-rabbit IgG (H+L) used at a 1/1000 dilution for 1h. Alexa Fluor® 594 WGA was used to label plasma membranes (red) at a 1/200 dilution for 1h. DAPI was used to stain the cell nuclei (blue) at a concentration of 1.43µM.

**Please note:** All products are "FOR RESEARCH USE ONLY. NOT FOR USE IN DIAGNOSTIC PROCEDURES"

### Our Abpromise to you: Quality guaranteed and expert technical support

- Replacement or refund for products not performing as stated on the datasheet
- Valid for 12 months from date of delivery
- Response to your inquiry within 24 hours
- We provide support in Chinese, English, French, German, Japanese and Spanish
- Extensive multi-media technical resources to help you
- We investigate all quality concerns to ensure our products perform to the highest standards

If the product does not perform as described on this datasheet, we will offer a refund or replacement. For full details of the Abpromise, please visit <https://www.abcam.co.jp/abpromise> or contact our technical team.

### Terms and conditions

- Guarantee only valid for products bought direct from Abcam or one of our authorized distributors