

Anti-Dopamine Receptor D1 antibody [EP1560Y] ab81296

リコンビナント **RabMAb**

★★★★☆ **4 Abreviews** **16 References** 画像数 5

製品の概要

製品名	Anti-Dopamine Receptor D1 antibody [EP1560Y]
製品の詳細	Rabbit monoclonal [EP1560Y] to Dopamine Receptor D1
由来種	Rabbit
アプリケーション	適用あり: WB 適用なし: Flow Cyt or ICC/IF
種交差性	交差種: Mouse, Rat, Guinea pig, Human
免疫原	Synthetic peptide within Human Dopamine Receptor D1 aa 400 to the C-terminus (C terminal). The exact sequence is proprietary. Database link: P21728
ポジティブ・コントロール	WB: SH-SY5Y cell lysate, human fetal kidney, guinea pig brain, mouse and rat brain and kidney tissue lysates.
特記事項	This product is a recombinant monoclonal antibody, which offers several advantages including: <ul style="list-style-type: none"> - High batch-to-batch consistency and reproducibility - Improved sensitivity and specificity - Long-term security of supply - Animal-free production For more information see here . Our RabMAb [®] technology is a patented hybridoma-based technology for making rabbit monoclonal antibodies. For details on our patents, please refer to RabMAb[®] patents .

製品の特性

製品の状態	Liquid
保存方法	Shipped at 4°C. Store at +4°C short term (1-2 weeks). Upon delivery aliquot. Store at -20°C. Avoid freeze / thaw cycle.
バッファー	pH: 7.2 Preservative: 0.01% Sodium azide Constituents: 40% Glycerol (glycerin, glycerine), 0.05% BSA, 59% PBS
精製度	Protein A purified
ポリ/モノ	モノクローナル

アプリケーション

アプリケーション	Abreviews	特記事項
WB		1/1000 - 1/10000. Predicted molecular weight: 49 kDa.

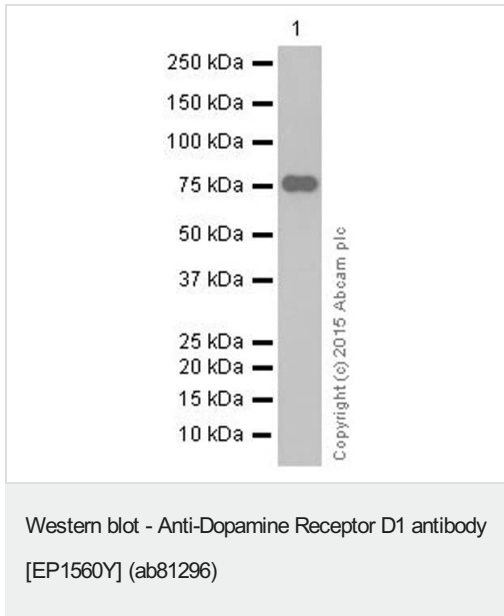
ターゲット情報

機能	Dopamine receptor whose activity is mediated by G proteins which activate adenylyl cyclase.
組織特異性	Detected in caudate, nucleus accumbens and in the olfactory tubercle.
配列類似性	Belongs to the G-protein coupled receptor 1 family.
細胞内局在	Cell membrane. Endoplasmic reticulum membrane. Transport from the endoplasmic reticulum to the cell surface is regulated by interaction with DNAJC14.

画像



Blocking and dilution buffer: 5% NFDM /TBST.



Anti-Dopamine Receptor D1 antibody [EP1560Y] (ab81296) at 1/5000 dilution (purified) + SH-SY5Y whole cell lysate at 10 µg

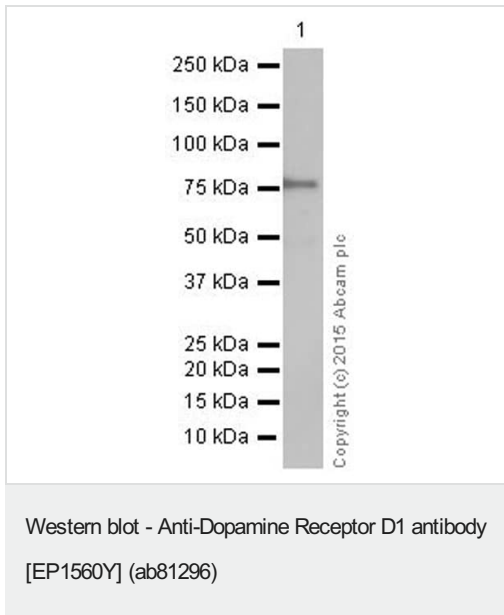
Secondary

Goat Anti-Rabbit IgG H&L (HRP) ([ab97051](#)) at 1/20000 dilution

Predicted band size: 49 kDa

Observed band size: 75 kDa

Blocking and dilution buffer: 5% NFDM /TBST.



Anti-Dopamine Receptor D1 antibody [EP1560Y] (ab81296) at 1/1000 dilution (purified) + Human fetal kidney tissue lysate at 10 µg

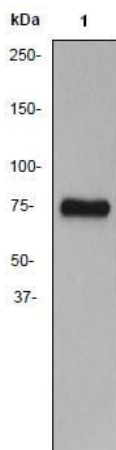
Secondary

Goat Anti-Rabbit IgG H&L (HRP) ([ab97051](#)) at 1/20000 dilution

Predicted band size: 49 kDa

Observed band size: 75 kDa

Blocking and dilution buffer: 5% NFDM /TBST.



Western blot - Anti-Dopamine Receptor D1 antibody
[EP1560Y] (ab81296)

Anti-Dopamine Receptor D1 antibody [EP1560Y] (ab81296) at
1/20000 dilution (unpurified) + SH-SY5Y cell lysate at 10 µg

Secondary

HRP-conjugated goat anti-rabbit IgG at 1/2000 dilution

Predicted band size: 49 kDa

Observed band size: 75 kDa

Why choose a recombinant antibody?



Research with confidence
Consistent and reproducible results



Long-term and scalable supply
Recombinant technology



Success from the first experiment
Confirmed specificity



Ethical standards compliant
Animal-free production

Anti-Dopamine Receptor D1 antibody [EP1560Y]
(ab81296)

Please note: All products are "FOR RESEARCH USE ONLY. NOT FOR USE IN DIAGNOSTIC PROCEDURES"

Our Abpromise to you: Quality guaranteed and expert technical support

- Replacement or refund for products not performing as stated on the datasheet
- Valid for 12 months from date of delivery
- Response to your inquiry within 24 hours
- We provide support in Chinese, English, French, German, Japanese and Spanish
- Extensive multi-media technical resources to help you
- We investigate all quality concerns to ensure our products perform to the highest standards

If the product does not perform as described on this datasheet, we will offer a refund or replacement. For full details of the Abpromise, please visit <https://www.abcam.co.jp/abpromise> or contact our technical team.

Terms and conditions

- Guarantee only valid for products bought direct from Abcam or one of our authorized distributors