

Anti-Dopamine Receptor D1 antibody ab216644

4 References [画像数 3](#)

製品の概要

製品名	Anti-Dopamine Receptor D1 antibody
製品の詳細	Rabbit polyclonal to Dopamine Receptor D1
由来種	Rabbit
アプリケーション	適用あり: WB
種交差性	交差種: Mouse, Rat, Human
ポジティブ・コントロール	WB: Human 293T cell lysate, mouse cerebrum lysate, rat cerebrum, mouse olfactory bulb, rat olfactory bulb, rat kidney
特記事項	<p>The Life Science industry has been in the grips of a reproducibility crisis for a number of years. Abcam is leading the way in addressing this with our range of recombinant monoclonal antibodies and knockout edited cell lines for gold-standard validation. Please check that this product meets your needs before purchasing.</p> <p>If you have any questions, special requirements or concerns, please send us an inquiry and/or contact our Support team ahead of purchase. Recommended alternatives for this product can be found below, along with publications, customer reviews and Q&As</p>

製品の特性

製品の状態	Liquid
保存方法	Shipped at 4°C. Store at +4°C short term (1-2 weeks). Upon delivery aliquot. Store at -20°C long term. Avoid freeze / thaw cycle.
バッファー	<p>pH: 7.40</p> <p>Preservative: 0.02% Proclin 300</p> <p>Constituents: 50% Glycerol (glycerin, glycerine), 1% BSA, 48.98% TBS, 1X</p>
精製度	Protein A purified
ポリ/モノ	ポリクローナル
アイソタイプ	IgG

アプリケーション

The Abpromise guarantee

Abpromise保証は、 次のテスト済みアプリケーションにおけるab216644の使用に適用されます

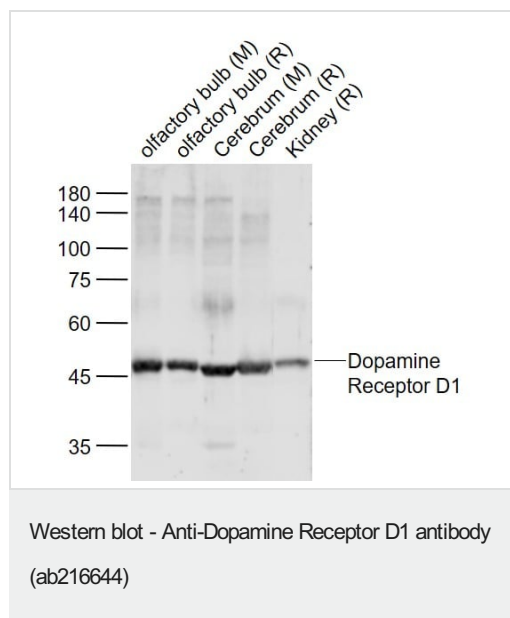
アプリケーションノートには、推奨の開始希釈率がありますが、適切な希釈率につきましてはご検討ください。

アプリケーション	Abreviews	特記事項
WB		1/100 - 1/1000. Predicted molecular weight: 49 kDa.

ターゲット情報

機能	Dopamine receptor whose activity is mediated by G proteins which activate adenylyl cyclase.
組織特異性	Detected in caudate, nucleus accumbens and in the olfactory tubercle.
配列類似性	Belongs to the G-protein coupled receptor 1 family.
細胞内局在	Cell membrane. Endoplasmic reticulum membrane. Transport from the endoplasmic reticulum to the cell surface is regulated by interaction with DNAJC14.

画像



All lanes : Anti-Dopamine Receptor D1 antibody (ab216644) at 1/1000 dilution

Lane 1 : Mouse Olfactory bulb lysate

Lane 2 : Rat Olfactory bulb lysate

Lane 3 : Mouse Cerebrum lysate

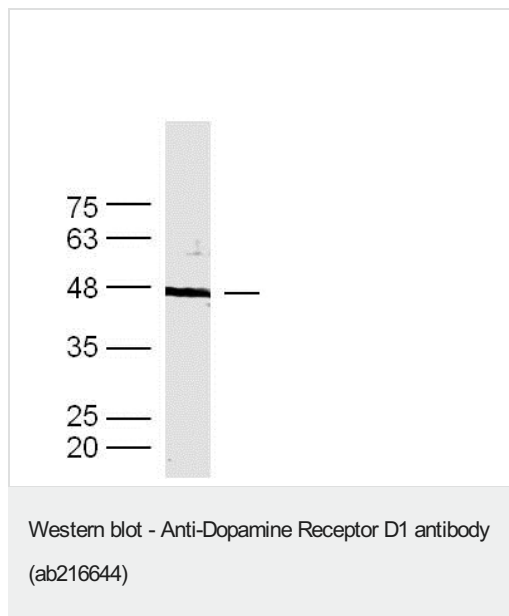
Lane 4 : Rat cerebrum lysate

Lane 5 : Rat Kidney lysate

Secondary

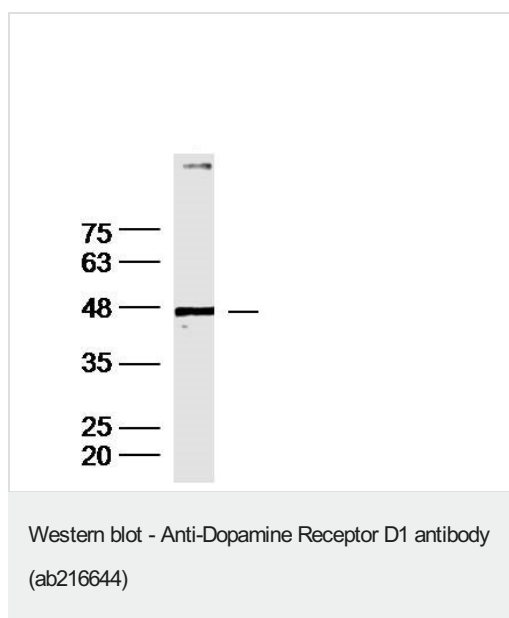
All lanes : Conjugated Secondary at 1/20000 dilution

Predicted band size: 49 kDa



Anti-Dopamine Receptor D1 antibody (ab216644) at 1/300 dilution
+ Human 293T cell lysate

Predicted band size: 49 kDa



Anti-Dopamine Receptor D1 antibody (ab216644) at 1/300 dilution
+ mouse cerebrum lysate

Predicted band size: 49 kDa

Please note: All products are "FOR RESEARCH USE ONLY. NOT FOR USE IN DIAGNOSTIC PROCEDURES"

Our Abpromise to you: Quality guaranteed and expert technical support

- Replacement or refund for products not performing as stated on the datasheet
- Valid for 12 months from date of delivery
- Response to your inquiry within 24 hours
- We provide support in Chinese, English, French, German, Japanese and Spanish
- Extensive multi-media technical resources to help you
- We investigate all quality concerns to ensure our products perform to the highest standards

If the product does not perform as described on this datasheet, we will offer a refund or replacement. For full details of the Abpromise, please visit <https://www.abcam.co.jp/abpromise> or contact our technical team.

Terms and conditions

- Guarantee only valid for products bought direct from Abcam or one of our authorized distributors