

Anti-Dopamine Receptor D1 antibody ab20066

★★★★★ [11 Abreviews](#) [47 References](#) [画像数 1](#)

製品の概要

製品名	Anti-Dopamine Receptor D1 antibody
製品の詳細	Rabbit polyclonal to Dopamine Receptor D1
由来種	Rabbit
特異性	Stains specific cells in various regions of PLP fixed Rat brain sections. This includes Medial septum, Nucleus accumbens, Dentate gyrus, Globus pallidus, Medial forebrain bundle, Cortex regions 1-3, Substantia Nigra reticulata, and the Ventral tegmental area. Cross reactivity: D1 Dopamine Receptor (9-21) 100%; D1 Dopamine Receptor 90%; D2 Dopamine Receptor (272-282) 0%; D2 Dopamine Receptor 0%; D3 Dopamine Receptor (2-10) 0%; D3 Dopamine Receptor 0; D4 Dopamine Receptor (176-185) 0%; D4 Dopamine Receptor 0%; D5 Dopamine Receptor (23-35) 0%; D5 Dopamine Receptor 0%

アプリケーション

適用あり: WB

種交差性

交差種: Rat, Human

免疫原

Synthetic peptide:

MDGTGLVVERDFS

, corresponding to amino acids 9-21 of Human Dopamine Receptor D1

 [Run BLAST with](#)

 [Run BLAST with](#)

特記事項

The Life Science industry has been in the grips of a reproducibility crisis for a number of years. Abcam is leading the way in addressing this with our range of recombinant monoclonal antibodies and knockout edited cell lines for gold-standard validation. Please check that this product meets your needs before purchasing.

If you have any questions, special requirements or concerns, please send us an inquiry and/or contact our Support team ahead of purchase. Recommended alternatives for this product can be found below, along with publications, customer reviews and Q&As

製品の特性

製品の状態	Liquid
保存方法	Shipped at 4°C. Store at +4°C short term (1-2 weeks). Store at -20°C or -80°C. Avoid freeze / thaw cycle.
バッファー	Constituents: PBS, 1% BSA
精製度	Whole antiserum

ポリ/モノ	ポリクローナル
アイソタイプ	IgG

アプリケーション

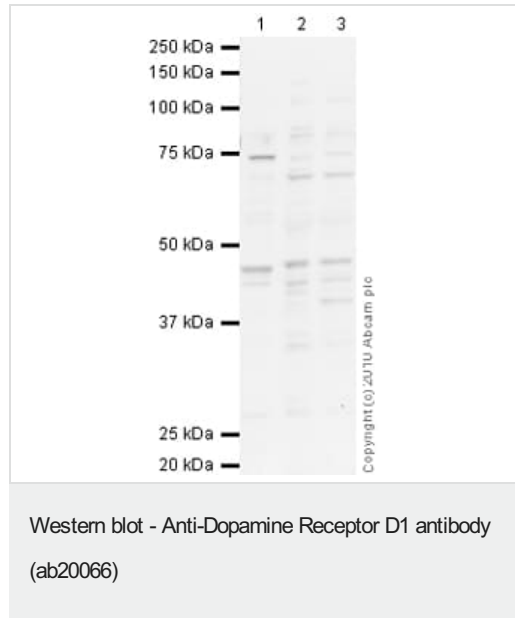
The Abpromise guarantee **Abpromise保証は、** 次のテスト済みアプリケーションにおけるab20066の使用に適用されます
 アプリケーションノートには、推奨の開始希釈率がありますが、適切な希釈率につきましてはご確認ください。

アプリケーション	Abreviews	特記事項
WB		1/1000. Detects a band of approximately 48 kDa (predicted molecular weight: 49 kDa).

ターゲット情報

機能	Dopamine receptor whose activity is mediated by G proteins which activate adenylyl cyclase.
組織特異性	Detected in caudate, nucleus accumbens and in the olfactory tubercle.
配列類似性	Belongs to the G-protein coupled receptor 1 family.
細胞内局在	Cell membrane. Endoplasmic reticulum membrane. Transport from the endoplasmic reticulum to the cell surface is regulated by interaction with DNAJC14.

画像



All lanes : Anti-Dopamine Receptor D1 antibody (ab20066) at 1 µg/ml

Lane 1 : Human brain tissue lysate - total protein ([ab29466](#))

Lane 2 : Rat Forebrain

Lane 3 : Rat Cortex Tissue Lysate

Lysates/proteins at 10 µg per lane.

Secondary

All lanes : Goat polyclonal to Rabbit IgG - H&L - Pre-Adsorbed (HRP) at 1/3000 dilution

Developed using the ECL technique.

Performed under reducing conditions.

Predicted band size: 49 kDa

Observed band size: 48 kDa

Additional bands at: 45 kDa, 70 kDa, 75 kDa. We are unsure as

to the identity of these extra bands.

Exposure time: 90 seconds

Please note: All products are "FOR RESEARCH USE ONLY. NOT FOR USE IN DIAGNOSTIC PROCEDURES"

Our Abpromise to you: Quality guaranteed and expert technical support

- Replacement or refund for products not performing as stated on the datasheet
- Valid for 12 months from date of delivery
- Response to your inquiry within 24 hours
- We provide support in Chinese, English, French, German, Japanese and Spanish
- Extensive multi-media technical resources to help you
- We investigate all quality concerns to ensure our products perform to the highest standards

If the product does not perform as described on this datasheet, we will offer a refund or replacement. For full details of the Abpromise, please visit <https://www.abcam.co.jp/abpromise> or contact our technical team.

Terms and conditions

- Guarantee only valid for products bought direct from Abcam or one of our authorized distributors