


# Anti-DOCK180 antibody ab76927

**1** [References](#) **2** [画像数](#)

### 製品の概要

|              |   |
|--------------|---|
| 製品名          | Anti-DOCK180 antibody   |
| 製品の詳細        | Rabbit polyclonal to DOCK180  |
| 由来種          | Rabbit  |
| アプリケーション     | <b>適用あり:</b> WB, IP   |
| 種交差性         | <b>交差種:</b> Mouse, Human<br><b>交差が予測される動物種:</b> Rat, Rabbit, Horse, Chicken, Guinea pig, Cow, Dog, Turkey, Pig, Chimpanzee, Rhesus monkey, Gorilla, Orangutan    |
| 免疫原          | Synthetic peptide corresponding to Human DOCK180.<br>Database link: <a href="#">NP_001371.1</a>   |
| ポジティブ・コントロール | HepG2 whole cell lysate ( <a href="#">ab7900</a> ) can be used as a positive control in WB. HeLa, 293T and NIH3T3 whole cell lysates.   |
| 特記事項         | <p>The Life Science industry has been in the grips of a reproducibility crisis for a number of years. Abcam is leading the way in addressing this with our range of recombinant monoclonal antibodies and knockout edited cell lines for gold-standard validation. Please check that this product meets your needs before purchasing.</p> <p>If you have any questions, special requirements or concerns, please send us an inquiry and/or contact our Support team ahead of purchase. Recommended alternatives for this product can be found below, along with publications, customer reviews and Q&amp;As</p> |

### 製品の特性

|           |  |
|-----------|--|
| 製品の状態     | Liquid   |
| 保存方法      | Shipped at 4°C. Upon delivery aliquot and store at -20°C. Avoid freeze / thaw cycles.            |
| バッファー     | pH: 6.8<br>Preservative: 0.09% Sodium azide<br>Constituents: 0.1% BSA, Tris buffered saline      |
| 精製度       | Immunogen affinity purified  |
| 特記事項 (精製) | ab76927 was affinity purified using an epitope specific to DOCK180 immobilized on solid support. |
| ポリ/モノ     | ポリクローナル  |

アイソタイプ

IgG

## アプリケーション

### The Abpromise guarantee

**Abpromise保証は、次のテスト済みアプリケーションにおけるab76927の使用に適用されます**

アプリケーションノートには、推奨の開始希釈率がありますが、適切な希釈率につきましてはご検討ください。

| アプリケーション | Abreviews | 特記事項   |
|----------|-----------|--|
| WB       |           | 1/2000 - 1/10000. Predicted molecular weight: 215 kDa. |
| IP       |           | Use at 2-5 µg/mg of lysate.                            |

## ターゲット情報

### 機能

Involved in cytoskeletal rearrangements required for phagocytosis of apoptotic cells and cell motility. Functions as a guanine nucleotide exchange factor (GEF), which activates Rac Rho small GTPases by exchanging bound GDP for free GTP. Its GEF activity may be enhanced by ELMO1.

### 組織特異性

Highly expressed in placenta, lung, kidney, pancreas and ovary. Expressed at intermediate level in thymus, testes and colon.

### 配列類似性

Belongs to the DOCK family.  
Contains 1 DHR-1 (CZH-1) domain.  
Contains 1 DHR-2 (CZH-2) domain.  
Contains 1 SH3 domain.

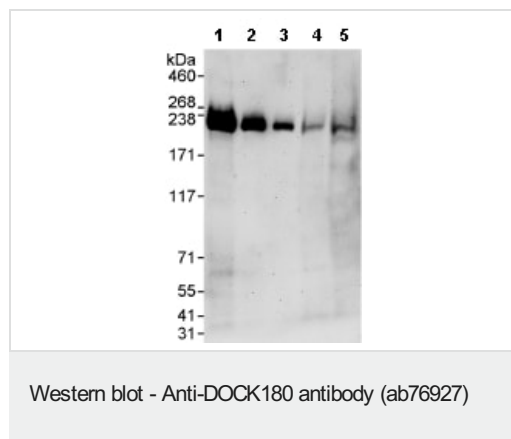
### ドメイン

The DHR-2 domain is necessary and sufficient for the GEF activity.

### 細胞内局在

Cytoplasm. Membrane. Recruited to membranes via its interaction with phosphatidylinositol 3,4,5-triphosphate.

## 画像



**All lanes :** Anti-DOCK180 antibody (ab76927) at 0.04 µg/ml

**Lane 1 :** HeLa whole cell lysate at 50 µg

**Lane 2 :** HeLa whole cell lysate at 15 µg

**Lane 3 :** HeLa whole cell lysate at 5 µg

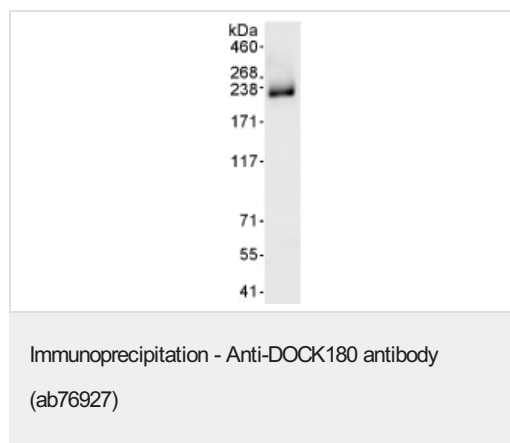
**Lane 4 :** 293T whole cell lysate at 50 µg

**Lane 5 :** NIH3T3 whole cell lysate at 50 µg

**Predicted band size:** 215 kDa

**Observed band size:** 215 kDa

**Exposure time:** 3 minutes



Detection of DOCK180 by Western Blot of Immunoprecipitate.  
ab76927, at 1µg/ml, staining DOCK180 in HeLa whole cell lysate  
immunoprecipitated using ab76927 at 3µg/mg lysate (1 mg/IP; 20%  
of IP loaded/lane).  
Detection: Chemiluminescence with exposure time of 3 seconds.

**Please note:** All products are "FOR RESEARCH USE ONLY. NOT FOR USE IN DIAGNOSTIC PROCEDURES"

### Our Abpromise to you: Quality guaranteed and expert technical support

---

- Replacement or refund for products not performing as stated on the datasheet
- Valid for 12 months from date of delivery
- Response to your inquiry within 24 hours
- We provide support in Chinese, English, French, German, Japanese and Spanish
- Extensive multi-media technical resources to help you
- We investigate all quality concerns to ensure our products perform to the highest standards

If the product does not perform as described on this datasheet, we will offer a refund or replacement. For full details of the Abpromise, please visit <https://www.abcam.co.jp/abpromise> or contact our technical team.

### Terms and conditions

---

- Guarantee only valid for products bought direct from Abcam or one of our authorized distributors